



Standardized Emergency Management System (SEMS) Executive Course (ICS402)



Welcome

□ Course Manager



WELCOME

Participant Introductions

- ☐ **Name**
- ☐ **Organization**



Administrative Information

- ☐ **Evaluation**
- ☐ **Sign-in sheet**
- ☐ **Distractions**
- ☐ **Participant Slide copy**
- ☐ **Credentialing**



Objectives

- ❑ Understand SEMS Components, Levels, Functions, and Regulations
- ❑ Executive's Role at the Policy Level
- ❑ Executive's Role in the Incident Command System (ICS)



Standardized Emergency Management System (SEMS)

- ❑ History
- ❑ Purpose



Emergency Operations - Five Levels of Response



State

Region

Operational Area

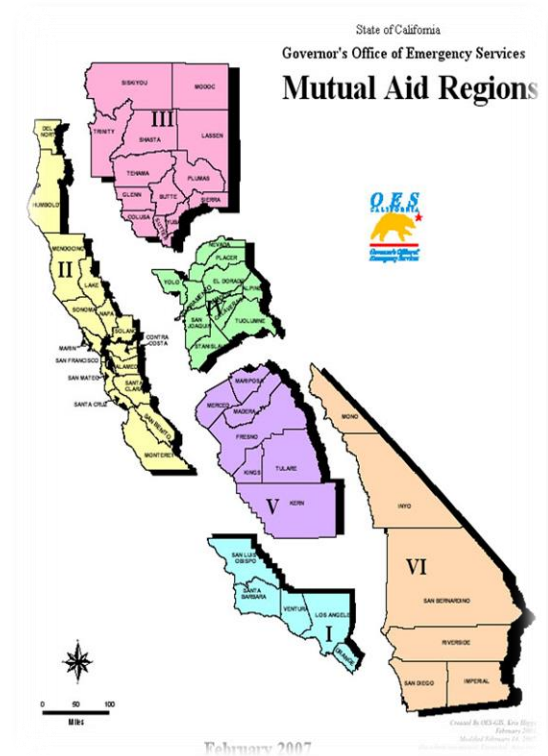
Local Government

Field

Note: Pure ICS used in the field & ICS principles used in the EOC levels

Four Major Components

- ❑ Incident Command System (ICS)
- ❑ Multi Agency Coordination
- ❑ Mutual Aid
- ❑ Operational Area Concept



The Incident Command System (ICS)

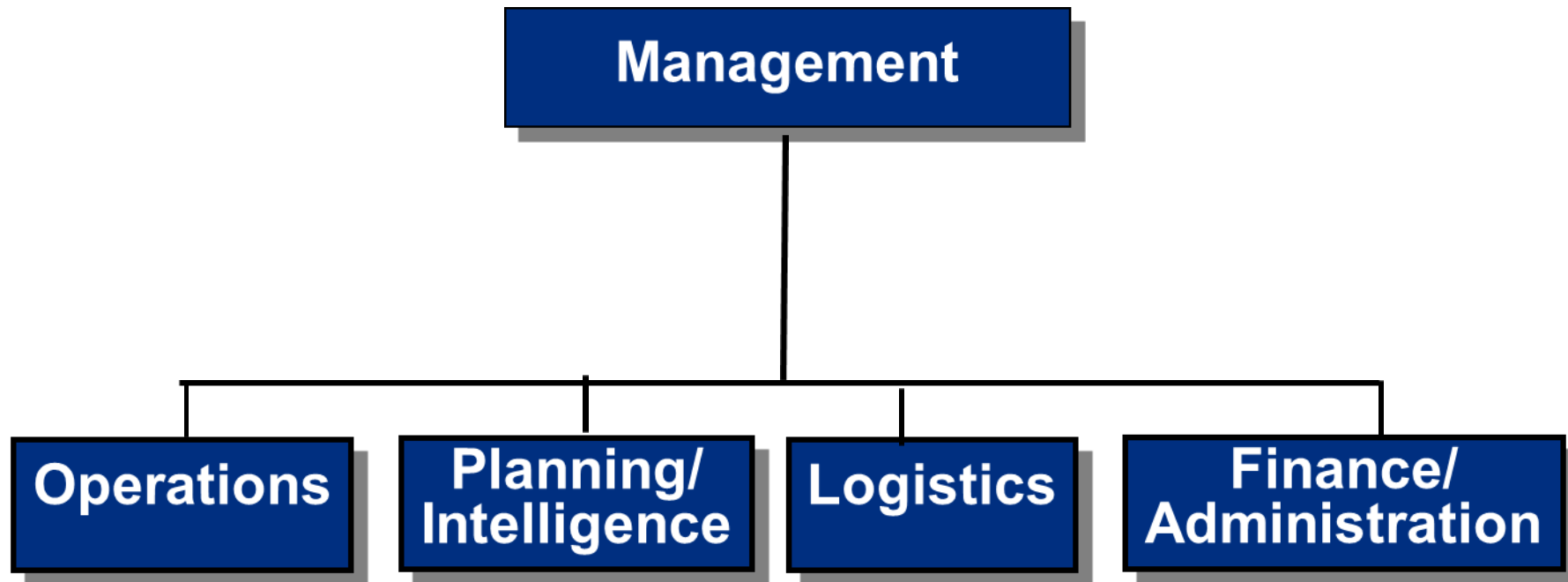
- ❑ Developed after a devastating 1970s wildfire in California
- ❑ Ineffective Response
- ❑ Firefighting RESources of California Organized for Potential Emergencies – FIRESCOPE
- ❑ What is ICS
- ❑ ICS Structure
- ❑ Span of Control



SEMS Functions and Features

- ❑ **Five Functions**

- ❑ **System Features**



Titles and Roles for SEMS

PRIMARY SEMS FUNCTION	FIELD RESPONSE LEVEL	EOCS AT OTHER SEMS LEVELS
Command/ Management	Command is responsible for the directing, ordering, and/or controlling of resources	Management is responsible for overall emergency policy and coordination
Operations	The coordinated tactical response of all field operations in accordance with the Incident Action Plan	The coordination of all jurisdictional operations in support of the response to the emergency in accordance with the EOC Action Plan
Planning/ Intelligence	The collection, evaluation, documentation, and use of information related to the incident	Collect, evaluate, and disseminate information and maintain documentation relative to all jurisdiction activities
Logistics	Provide facilities, services, personnel, equipment, and materials in support of the incident	Provide facilities, services, personnel, equipment, and materials in support of all jurisdiction activities as required
Finance/ Administration	Financial and cost analysis and administrative aspects not handled by the other functions.	Broad fiscal and recovery responsibility and overall fiscal accountability

COMMAND/ MANAGEMENT:



COMMAND

(Field Site-DOC)

OVERALL
RESPONSIBILITY
FOR ALL INCIDENT
ACTIVITY ON SITE



MANAGEMENT

(LocalEOC)

ESTABLISHES AND
IMPLEMENTS POLICY.
MANAGES ALL
JURISDICTIONAL
ACTIVITIES

OPERATIONS:



**FIELD
OPERATIONS**
(Field Site-DOC)

**DIRECTS THE
TACTICAL RESPONSE
OF ALL INCIDENT
OPERATIONS ON SITE**



**EOC
OPERATIONS**
(Local EOC)

**COORDINATES
ALL
OPERATIONS IN
SUPPORT OF THE RESPONSE**

PLANNING / INTELLIGENCE:



PLANNING/ INTELLIGENCE

(Field Site-DOC)

COLLECTS, PROCESSES AND
DOCUMENTS INFORMATION AT
THAT SITE FOR USE ON THE
INCIDENT



PLANNING / INTELLIGENCE

(Local EOC)

COLLECTS, ANALYZES,
PROCESSES, AND
DOCUMENTS
INFORMATION FOR
USE IN JURISDICTION -
WIDE PLANNING.

LOGISTICS:



LOGISTICS

(Field Site-DOC)

PROVIDES SERVICES,
PERSONNEL AND
EQUIPMENT IN
SUPPORT OF THE
INCIDENTS ON SITE



LOGISTICS

(Local EOC)

PROVIDES SERVICES,
PERSONNEL,
EQUIPMENT, AND
FACILITIES IN SUPPORT
OF ALL City
OPERATIONS

FINANCE ADMINISTRATION:



**FINANCE/
ADMIN.**
(Field Site-DOC)

**PROVIDES
FINANCIAL ACCOUNTING AND
COST CONTROL AT INCIDENT SITE**



**FINANCE/
ADMIN.**
(Local EOC)

**OVERALL
RESPONSIBILITY FOR
FISCAL ACCOUNTING,
COMPENSATION & CLAIMS,
AND FOR CITY'S
Cost Recovery**

SEMS

- ❑ Operational Area Concept
- ❑ Master Mutual Aid Agreement
- ❑ Mutual Aid Assistance Systems



Executive's Role and SEMS

- ❑ Planning
- ❑ Training
- ❑ Policy Direction



Emergency Response Agencies Under SEMS

- ❑ Interagency Coordination
- ❑ Lead Agency
- ❑ Response Options
- ❑ Leadership in the Field



Executive's Role and SEMS

- ❑ Emergency Operations Center (EOC)
- ❑ Legal Authority
- ❑ The Proclamation Process



Q & A

