

# CITY OF HERMOSA BEACH DEPARTMENT OF PUBLIC WORKS



## PROPOSAL FOR ON-CALL PLAN CHECK SERVICES RFP 19-02

JULY 11, 2019

**m6**  
CONSULTING

m6 Consulting, Inc.  
4165 E. Thousand Oaks Blvd, Suite 355  
Westlake Village, California 91362



4165 Thousand Oaks Blvd, Suite 355  
Westlake Village, California 91362  
805 379 1015 Phone

July 11, 2019

Mr. Fabio M. Macias  
Public Works Department  
**City of Hermosa Beach**  
1315 Valley Drive  
Hermosa Beach, California 90254-3885

**Subject: City of Hermosa Beach Public Works Department  
Proposal for On-Call Plan Checking Services  
RFP 19-02**

Dear Mr. Macias,

Thank you for the opportunity to provide our Proposal for Plan Check Services for the City of Hermosa Beach Public Works Department. We are pleased to present this Proposal, which reflects the capabilities of our uniquely qualified firm to provide the requested scope of on-call plan checking services to the City of Hermosa Beach.

The m6 Consulting (m6) team has provided development review and related mapping and engineering services to the City of Hermosa Beach Public Works Department since 2015. Additionally, m6 provides engineering and review services to the Cities of Calabasas, West Hollywood, Camarillo, Westlake Village, Office of the State Fire Marshal, and California State University (CSU) System's campuses statewide. These services include building life safety, structural, and associated plumbing and mechanical systems, as well as site grading, drainage, roadway and utility review. m6 provides funding and grant writing services to the Cities of West Hollywood, Beverly Hills, Santa Monica, Oxnard and Goleta, as well as the Las Virgenes Municipal Water District (LVMWD). Additionally, m6 staff have assisted cities with the development of processes, procedures, policies and the training of their staff.

Our company distinguishes itself by providing a high level of service to a select group of clients. Company principals are directly involved in day to day operations, allowing for a focused presence and leadership in the City and its review projects. Our team members have worked with the City and their staff for years, and represent a context-sensitive understanding of Hermosa Beach and the nuances of development review and conditioning. m6 has assisted the City's Public Works and Community Development Departments on complex development projects which include offsite infrastructure impacts and improvements, complex right of way and construction conditions, utility relocations, and significant interdepartmental coordination and conditioning at early stages of development. These projects occur in a built environment of existing adjacent development, aged infrastructure, and complex site conditions, in the context of

an active and vocal community. In this framework, m6 has provided engineering review of private development and capital projects, disabled access review and building assessment for City facilities, technical engineering advice and staff support, and assistance with the development of policies, procedures, process mapping, and standard plan updates.

### **Summary of Qualifications**

Our engineering and development review team possesses a unique combination of broad experience, deep knowledge and blended expertise in construction, review and city process development. They approach their work in a pro-active, solutions-oriented manner that values efficient client service.

#### **Key Qualifications:**

- Comprehensive Knowledge of Development Review in Hermosa Beach
- Knowledge of the City of Hermosa Beach, Staff and Procedures
- Highly Experienced Team Focused on the City of Hermosa Beach and its Needs
- Value Added Expertise in Project Management and Specialized Engineering Functions
- Experience in public works administration, grant writing, funding, and inter-agency communication and coordination.
- Roadway, Drainage, Sewer Design and Master Planning

### **Authorized Signature**

The following individual is authorized to negotiate and contractually bind the Consultant:

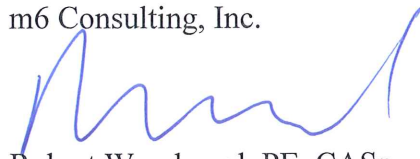
Robert P. Woodward, PE, Principal  
4165 E. Thousand Oaks Boulevard, Suite 355  
Westlake Village, California 91362  
(805) 379-1015 (Phone)  
robert@m6consultinginc.com

**Closure**

We appreciate the opportunity to present our proposal to the City of Hermosa Beach. Please feel free to contact me with any questions you may have regarding our proposal and related scope of services. Thank you for your consideration.

Sincerely,

m6 Consulting, Inc.

A handwritten signature in blue ink, appearing to read 'Robert Woodward', with a stylized, flowing script.

Robert Woodward, PE, CASp  
Principal





*m6 Consulting, Inc.  
Proposal for On-Call Plan Checking Services  
July 11, 2019*

**PROPOSAL  
ON-CALL PLAN CHECKING SERVICES  
CITY OF HERMOSA BEACH PUBLIC WORKS DEPARTMENT**

---

**1.0 FIRM PROFILE**

m6 Consulting, Inc (m6) provides plan review, inspection, permitting, project management and engineering services to municipal clients as well as the State of California. Our principal office is located at 4165 East Thousand Oaks Boulevard in the community of Westlake Village in Ventura County. In addition, we currently maintain an on-site presence serving Hermosa Beach Public Works at City Hall.

**FIRM INFORMATION**

**Legal Name and Address:** m6 Consulting Inc.  
4165 East Thousand Oaks Blvd. Ste. 355  
Westlake Village, CA, 91362

**Point of Contact:** Robert Woodward  
4165 East Thousand Oaks Blvd. Ste. 355  
Westlake Village, CA, 91362  
805.379.1015

**Type of Business:** S Corporation

**Federal Employer I.D. Number:** 4641711554

**Number of Years Company has Been in Business:** 6 Years



## **2.0 PROJECT UNDERSTANDING AND APPROACH TO SCOPE OF WORK**

Our company provides development review, engineering and related services for the Cities of Calabasas, Camarillo, Santa Monica, Beverly Hills, Westlake Village, West Hollywood, Hermosa Beach, Oxnard, Goleta, and the Las Virgenes Municipal Water District (LVMWD), as well as the 23 campuses of the California State University (CSU) System, Community College District, and the Office of the State Fire Marshal (OSFM). m6 team members have experience in project management and design of highway, roadway, infrastructure, grading and drainage projects, as well as the review of private development grading, drainage, infrastructure, associated site plan, accessibility, structural and vertical construction. The m6 team is unique in their blend of experience in the design of private development grading, drainage, infrastructure, inspection and assessment of building sites and associated vertical construction, as well as the coordination and management of bid processes, agency approvals and construction.

The m6 Consulting (m6) team has provided development review and related mapping and engineering services to the City of Hermosa Beach Public Works Department since 2015. m6 has assisted the City's Public Works and Community Development Departments on complex development projects which include offsite infrastructure impacts and improvements, complex right of way and construction conditions, utility relocations, and significant interdepartmental coordination and conditioning at early stages of development. These projects occur in a built environment of existing adjacent development, aged infrastructure, and complex site conditions, in the context of an active and vocal community. In this framework, m6 has provided engineering review of private development and capital projects, disabled access review and building assessment for City facilities, technical engineering advice and staff support, and assistance with the development of policies, procedures, process mapping, and standard plan updates.

In accordance with the requirements of the Request for Proposals we offer the following understanding and approach for the delivery of the required Land Development Civil Plan Check services. m6 will provide for the review of project development plans and related design reports including grading, drainage, infrastructure, as well as public right of way improvements associated with development projects. Such improvements include remedial grading, excavation and associated earthwork in conjunction with the approved geotechnical recommendations, as well as associated structures including shoring, retaining walls, outlet structures and bridges requiring public works review. Other review items include on site paving, circulation, streets, sidewalks, storm drains and associated catch basins, junction and outlet structures, water quality mitigation related devices, as well as sanitary sewers and related manholes, water lines, off-site improvements (street, drainage, water and sewer) and landscape improvements. The proposed project storm drain and sewer impacts must be reviewed relative to the City's storm drain and sewer master plans for compatibility and to assess impacts to these systems. Review of



proposed storm drain improvements shall be completed in conjunction with the project's drainage study, which evaluates project and area hydrology and associated hydraulic capacity of existing and proposed drainage systems. Compliance of the project with the City's LID guidelines, MS4 permit documents, and NPDES requirements will be verified together with a review and approval of site improvements, drainage system and related water quality mitigation measures.

For new construction or redevelopment projects, including complex residential, multi-family, commercial or mixed use of significant scope, m6 may provide preliminary review and approval of the project if so directed by the Public Works Department. These reviews commence early in the project planning process, typically at the time of environmental study preparation, and evaluate the project's infrastructure impacts. This process of preliminary review assesses existing site conditions, identifies deficiencies with respect to proposed project impacts, and quantifies required improvements to facilities. The purpose of these reviews is to establish project feasibility, identify significant project impacts, and establish mitigation measures and conditions of approval. These reviews, with associated conditioning, occur prior to the approval of project entitlements (Conditional Use Permit, Vesting Tentative Map, Tentative Parcel Map, etc.).

m6 will provide written copies of their correction list to the City Public Works Department, and provide a recommendation for approval when the plan review process is completed and plans are approvable. Team members will attend meetings with City staff to review comments, provide briefings and coordinate the development of conditions of approval. Additionally meetings can be provided with project technical consultants, and applicants as necessary to resolve review items and insure compliance with the City's standards and requirements. When required or deemed appropriate by Public Works Director, m6 will attend commission and Council meetings and make presentations when necessary.

m6 and its staff have assisted cities with the development of policies, procedures, checklists and guidelines to clarify process and related review procedures for grading, drainage, infrastructure review, preliminary studies and reports, tentative maps and parcel maps. Our staff currently assists the City of Hermosa Beach with the development of grading and drainage checklists, development process mapping and development code review, so we are well familiar with the current state of this process with the City.



### **Highlighted Knowledge and Capabilities**

m6 can assist the City and their Public Works Department with all aspects of project management and engineering support, inclusive of the following:

- Review of development and off site improvement plans, parcel maps, vesting tentative parcel maps, wireless/cellular facility plans and applications.
- Project/program management.
- City engineering and extension of staff services.
- Traffic engineering, traffic control plan and signal review.
- Interagency coordination and permitting.
- Utility coordination, communication and permitting.
- Capital project development and design management.
- Bid period services (bid package preparation, bidder communication, bid analysis and summary staff reports and recommendations).
- Project funding/financing (application, coordination, funding documentation and reimbursement requests).
- Grant writing and funding applications.
- Public outreach and project presentations to City staff, Council, and Commissions.
- Quality Assurance (QA)/Quality Control (QC), peer review and constructability analysis.
- Floodplain management and FEMA coordination.
- Disabled accessibility assessments for City buildings and facilities.
- Program and ordinance development and improvement.
- Policy and procedure development and process mapping.
- Staff training.

### *Soils*

Like many coastal communities, Hermosa Beach is characterized by challenging geology, hillside construction conditions, high density development, expansive soils and the difficulties of redevelopment in a built environment. Grading and excavation limits can be affected by geologic and geotechnical conditions, property and easement limits, and adjacent development. These considerations need to be identified and solutions developed early in the development process as feasibility of the project is evaluated, and conditions of approval developed accordingly. Geotechnical conditions developed through the design and review process need to be incorporated into the final foundation and site development plans.



### *Grading and Drainage*

Grading and related excavation activities associated with site development can be complicated, particularly in existing built conditions. Required excavation for the construction of basements and underground parking garages, or the installation of earth retaining structures must be completed while protecting existing adjacent buildings, roads, utilities and property improvements. Completion of grading may require interim shoring and other protective measures that must be designed and permitted in advance of the start of construction. Attention must be paid to grade transitions that result in retaining walls that need to be designed, reviewed and approved in coordination with the Building and Safety and Planning Divisions of the Community Development Department. Sites proposed for development may be influenced by significant offsite drainage, and existing drainage facilities may be of limited capacity and require on-site detention to both offset increases in storm water runoff as well as mitigation of storm drain system deficiencies. The project must be reviewed with respect to the City's Master Plan of Drainage, the County of Los Angeles Modified Rational Hydrology methodology, and existing site and storm drain system constraints. The City's Low Impact Development guidelines provide a framework for mitigation of water quality impacts that frequently require on-site treatment and disposal. Timely review and conditioning of project drainage impacts and mitigation measures during the preliminary and design phases of the project allow for a complete and comprehensive process of project evaluation and approval.

### *City Survey and Mapping Review*

A common component of land development review is the evaluation of submitted project survey and mapping instruments. Development projects may require lot-line adjustments, parcel map waivers, condominium plans, parcel maps and final maps depending upon the specifics of the project and requirements of the Subdivision Map Act. These mapping instruments must be reviewed in conjunction with the project plans and underlying mapping plat maps, easements and deed restrictions, prior to approval and forwarding to the County of Los Angeles for recordation. During the Planning and entitlement process, tentative parcel maps and tentative maps may require preliminary review to identify any underlying boundary or conformity issues with existing property delineation. Given the often constrained nature of development and existing boundary and property issues that may exist in older sections of the City, an early survey and mapping review of proposed development is essential.

### *Disabled Access Review*

The Americans with Disabilities Act (ADA) and the State of California's Disabled Access provisions for commercial, multi-family housing and site accessibility provides both a



civil rights and code compliance framework for building owners and designers. m6 has skilled and CASp certified staff, experienced in providing disabled access review for new and existing buildings. Additions, alterations, and changes of use in existing buildings will trigger accessibility requirements, which must be correctly integrated into a project's plans and scope. In many urban and hillside environments, providing an accessible site and connections to public right of way can be challenging. The m6 team is experienced in performing disabled access compliance reviews in various municipalities and surrounding Counties, and well versed in the nuances of code application in these conditions.

### *Training*

m6 team members Robert Woodward, Masoud Mahmoud and Edward Alexanians provide training in areas of their expertise for agencies and fellow staff members in their client jurisdictions. Robert Woodward has provided grading, drainage, storm drain, retaining wall and building design training to both Community Development and Public Works audiences to both advance staff knowledge and improve interdepartmental awareness of areas of technical overlap and mutual review responsibility. Masoud Mahmoud and Ed Alexanians have provided code training to city and county staff members for both plan review process, procedure and code updates. Collectively, the m6 team utilizes their knowledge of construction, engineering, and code requirements to be an information resource to City staff and applicants alike.

### **Benefits of Blended Expertise: Public Works and Building and Safety**

There are many areas where traditional areas of Building and Safety jurisdiction interact with those of Public Works, utilities and adjacent regulatory agencies. m6 brings this blended expertise to such 'cross-over' areas in a seamless and comprehensible manner as a "value added" benefit to both City staff and applicants alike. Below are some examples.

#### *Retaining Walls Adjacent to Public Right of Way*

Frequently the construction of retaining walls, parking structures, and other subsurface structures are required adjacent to City and Caltrans right of way. Such structures require specialized shoring, with design contemplating wheel loading specified in AASHTO's design specifications. Should tie-back anchors be required for temporary or permanent soldier pile stabilization, coordination with Public Works regarding underground utility verification and pot-holing is necessary to assure the tie back concepts are feasible. Should permanent anchorage be required, we are familiar with the development of encroachment agreements and when these are feasible.



### *Mechanically Stabilized Earth (MSE) Retaining Walls*

Increasingly MSE walls are utilized for accomplishing grade transitions in hillside conditions. These are desirable with City Planners due to their ability to be actively vegetated, and create a 'living wall' in lieu of a conventional retaining wall. Unlike conventional wall though, MSE walls derive their stability from their earth backfill, and their performance is largely based on the placement tie-back geo-grids in conjunction with the site grading operation. Due to often limited setbacks from property lines, the geo-grids required to anchor these walls may render their use infeasible. Thus the review of MSE walls is a geotechnical and grading consideration more typical of Public Works expertise, while the permitting functions traditionally reside in Building and Safety. We have traditionally provided reviews of these types of structures between Departments, often at an early stage in the project when Planning approvals are required.

### *On-Site Vehicle and Pedestrian Bridges*

Frequently on-site development will contemplate the construction of bridges to accommodate vehicle or pedestrian traffic. The review of these structures requires the use of traditional highway standards such as AASHTO's Bridge Design Specifications and the associated standard for the design of pedestrian bridges. In consideration of these codes, it is important that Public Works engineering complete these reviews, as AASHTO standards are not traditionally understood or utilized by Building and Safety plan reviewers, and reviewing these structures under the CBC is inappropriate and problematic. At m6, both Mr. Woodward and Mr. Alexanians have designed and reviewed bridges, and understand the proper standards and considerations that need to be applied with such structures.

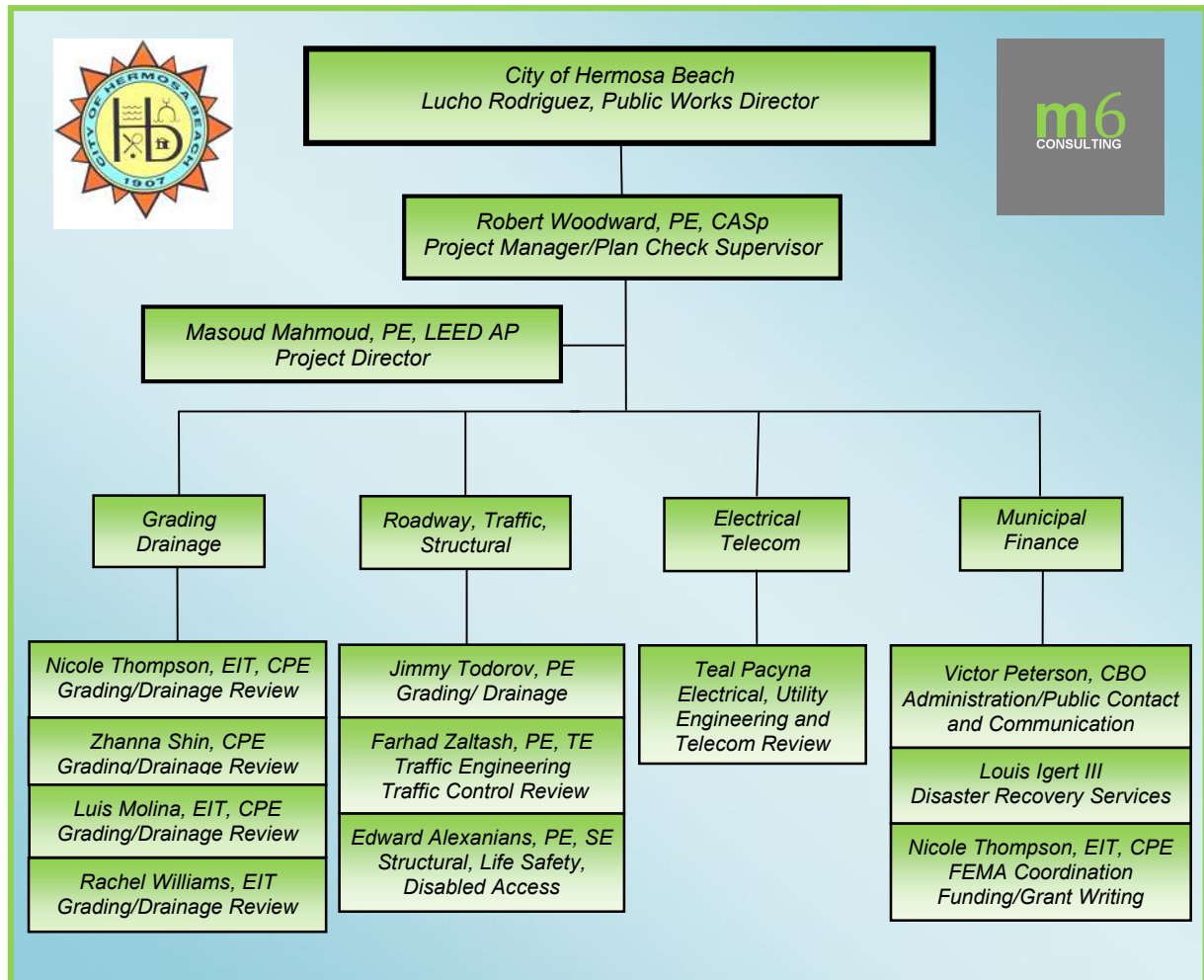
The above items reflect a few of many cross-over considerations where m6's blended and diverse experience is valuable in development review.





## TEAM ORGANIZATIONAL CHART

The team's organization structure and leadership are illustrated in the subsequent Organization Chart.



## COMMUNICATIONS APPROACH AND QUALITY CONTROL

*Communication-* Our philosophy in providing plan check services emphasizes the role of timely review and pro-active communication in the development review and permitting process. Plan check functions are not a turn-key service but rather an integrated process that spans multiple City departments as well as other outside agencies that may be involved due to project impacts and conditions of approval. The plan check group coordinates with diverse staff members and agencies relative to plan reviews, comments,



status and approvals. The effective operation and supervision of these functions requires knowledgeable presence and leadership.

Communication with city staff and community stakeholders is essential in the project development process. For larger projects community outreach and engagement of stakeholders helps to inform the public of proposed project, in advance of the start of construction activity. Such meetings help the community better understand the need for, and implications of proposed improvements to the City's infrastructure. Early information helps to answer questions and improve the quality of feedback provided at public hearings and in public document review.

m6 currently provides and maintains an active style of communication for review projects with City staff and clients. m6 communicates comments and responds to questions by phone and email, and attends meetings when required by City staff. It is important for City staff to also maintain a reciprocal line of communication. This m6 maintains state of the art teleconferencing facilities, with the ability to conduct virtual meetings with City staff and clients. The virtual review of plans interactively with design professionals and building owners allows for the rapid identification of issues and the seamless communication of requirements.

*Quality Control/ Quality Assurance (QA/QC)* - m6 engages in a layered quality control process. Project checklists are utilized along with constant communication between m6 team members, principles, and City staff regarding all plan reviews. Plans are thoroughly reviewed by one of the m6 team's certified plans examiners utilizing experience and the developed correction lists and City standard documents. The next level of review will be performed by the company's lead for City of Hermosa Beach plan reviews. The plans will then be discussed with one of the team's principals, and depending on the size and scope of the individual projects, additional review by the principle will occur. This layered approach to plan review is key to our quality control and quality assurance process.



### **3.0 EXPERIENCE AND QUALIFICATIONS**

#### **FIRM CAPABILITIES AND EXPERIENCE**

m6 Consulting, Inc. (m6) provides plan review, inspection, code compliance, project management and engineering services to municipal and higher education clients. Capabilities include review of grading, drainage, and infrastructure, as well as public right of way improvements associated with development projects for compliance with all codes and standards as adopted by the City of Hermosa Beach. Complimentary to this vertical building review capability is expertise in of building, structural, life safety, plumbing, mechanical, electrical, energy and green building code compliance review, which allows for a complete and comprehensive characterization of a proposed building site horizontal and vertical design and understanding. This hybridized capability is complemented by cutting edge technical knowledge, and supplemented by capabilities in regulatory mapping, project delivery and process improvement. Examples of current clients and related services are illustrated below.

##### *City of Hermosa Beach*

In 2016, the City of Hermosa Beach retained m6 to provide City Engineering and development review services for their Public Works Department. Services provided to the City include review of development projects and associated project design plans and related reports, grading, drainage, infrastructure and public right of way improvements. Hermosa Beach is an established community which is experiencing a large volume of re-development projects in an environment of aged infrastructure with limited capacity. As a built-out community, Hermosa Beach has had limited experience with large development and re-development projects, and they have retained m6 to assist with developing policies and procedures, checklists, process mapping, project conditioning and entitlement review. Complex infill projects often involve sophisticated design and excavation techniques, innovative technology, difficult utility relocations and traffic handling. m6 reviews grading, drainage, shoring, sewer, storm drain, lot line adjustments and parcel maps, as well as roadway improvement plans. Many projects require street vacations, easement re-conveyance and utility relocations. m6 has assisted Public Works with establishing a preliminary design review process that provides for feasibility review during the early stages of design and environmental documentation. This ensures that items critical to the City's infrastructure and project feasibility are identified and established during the early stages of project development.

##### *City of Calabasas*

In 2014 the City of Calabasas retained m6 Consulting to improve their plan check, project review and delivery process. They recognized that the combination of difficult soils,



adverse topographic conditions and complex construction methodologies require a special kind of 'hybrid' design reviewer that could review across the disciplines of planning, public works and building and safety relative to design standards, building codes and land use regulation. With the growing complexity of the City's planning, entitlement and development review process, there was a clear need to identify, anticipate and condition issues related to site development and building engineering early in the development review process. m6 has assisted the City in improving these portions of the development review process, as well as improving interdepartmental communication and coordination between Planning, Public Works and Building and Safety. m6 currently provides the City with building life safety, structural, plumbing, mechanical and electrical, grading and drainage review services, as well as inspection, permit technical and code enforcement support.

#### *California State University (CSU) System*

The Chancellor's Office of the CSU system has retained m6 Consulting to provide plan review services for their 23 campuses, as well as to improve their plan check and development review processes. The CSU system has initiated the development of 'net zero' buildings which minimize the impacts of the building on its environment relative to energy cogeneration, water reuse, and optimized energy consumption. These buildings are designed to 2020 code standards, which requires a specialized review beginning early in the design process to attain the equivalent of a LEED Platinum building. Individual CSU campuses have retained m6 to perform these types of plan checks, which blend both proactive and anticipatory review early in the process with detailed review of complex, cutting edge 'green' technologies along with traditional building components during the design level reviews. m6 serves the CSU as a technical resource in code review (building, structural, plumbing, mechanical and electrical), and serves as a conformance reviewer for fire-life safety for large projects in advance of their submittal to the State Fire Marshal and Division of the State Architect.

#### *City of West Hollywood*

The City of West Hollywood retained m6 to assist in building life safety, structural, disabled access, mechanical, plumbing and electrical plan review, as well as providing building official support and process mapping for the Community Development Department. Development projects located in West Hollywood often contemplate complex additions to existing buildings and re-development in built conditions to allow for vertical city growth. This vertical urbanization results in development proposals which are innovative from an architectural and structural standpoint, often involving high-rise structures and subterranean construction. m6 assists the City in the review of these projects by providing remote plan check services and maintaining effective and efficient communication with both City staff and building permit applicants.



*City of Goleta*

The City of Goleta retained m6 to assist with the management of the City's program of capital improvement projects and assist the Director with analysis of project management staff and project delivery for the Department of Public Works. The Director and City Manager desired the optimization of staff effort with respect to workload and consultant support, in order to execute an extensive program of road, bridge, City parks, traffic and rail projects, many with grant funding and associated project delivery deadlines. m6 provided training, coaching, and mentoring for City Public Works staff, assisted with consultant selection, and assumed direct management responsibility for multiple projects. m6 guided staff on the development of criteria for pursuit of various grant funding sources (Highway Bridge Program (HBP), Measure A, Safe Routes to School (SR2S), Environment Enhancement Mitigation Fund (EEMP), Community Development Block Grant (CDBG), SB1, others), to identify and prioritize staff effort relative to project type and funding viability. m6 developed a program management 'dashboard' for City Manager to organize capital projects by type, funding sources, risks, and significant deadlines/activities. Upon the Director's resignation, m6's Robert Woodward and Masoud Mahmoud assumed the role of interim Public Works Director and City Engineer respectively, at the request of the City Manager. During this period, m6 supervised the development of the City's Amtrak Station project, which included the acquisition of right of way, the development of station design, the evaluation of over and under-crossing options for vehicle, bike and pedestrian structures to traverse US Highway 101 and , and the acquisition of funding for the design and construction of the station and associated site improvements through the California State Transportation Agency's (CalSTA) Transit and Intercity Rail Capital Program (TIRCP). m6 coordinated fee study updates, developed cooperative/master agreements, improved inter-departmental communication and coordination between Public Works and Community Development, prepared staff reports and presentations for the City's Council, Planning Commission, and Parks Commission, and supported the City Attorney's Office with technical documentation, review and analysis.

Other efforts included the management of winter storm damage recovery related to disaster events FEMA-4305-DR-CA (January 2017 Storms), FEMA-4308-DR-CA (February 2017 Storms), with associated damage surveys, reporting, design, repair and outside agency (County Flood Control, Cal OES, FEMA, USACE, CDFG, RWQCB) coordination. Storm damage projects included a flood control channel repair (including articulated revetment, fish ladders, rip-rap scour protection), damaged cribwall (FHWA-ER Program) and debris removal. In association with disaster FEMA-4301-DR-CA, m6 prepared a successful grant proposal for funding of a \$750,000 seismic retrofit of the City's Goleta Valley Community Center through FEMA's Hazard Mitigation Grant Program (HMGP).



### *Engineering and Assessment*

m6 provides engineering design, assessment and reporting capabilities for architectural, and structural design projects in multiple jurisdictions. Our company maintains specialized capability in structural design assessment and inspection, with ICC certified inspection staff and engineers certified under Cal OES/FEMA's Structural Assessment Program (SAP) as post-disaster evaluators. Complimentary to these capabilities is expertise in the design of grading, drainage and public works improvements and infrastructure, which allows for a complete and comprehensive characterization of a proposed building site horizontal and vertical design and understanding. This hybridized capability is complemented by cutting edge technical knowledge, and supplemented by capabilities in FEMA floodplain review, hazard mapping, damage inspections, documentation, and Cal OES/FEMA disaster recovery process mapping, development and grant application preparation.

### *Disaster Assistance/Recovery*

m6 has provided disaster-related recovery assistance and services to cities in Los Angeles, Ventura and Santa Barbara Counties. These services include damage inspections and documentation, coordination with City, County, State (Cal OES) and federal (FEMA/FHWA) staff, and related damage assessment, reporting, cost tracking and reimbursement. m6 team members include former FEMA and Cal OES officials, who can provide knowledgeable navigation of State and federal code requirements related to Cal OES and FEMA disaster funding. The declaration of a federal disaster creates opportunities for grant funding for mitigation activities that will address future disasters and related preparedness. m6 has prepared mitigation grant proposals for multiple cities to access funding through FEMA's Hazard Mitigation Grant Program (HMGP), with associated technical documentation and benefit-cost assessments (BCA's). In recent years, m6 has provided disaster assistance and related management of projects for the cities of Calabasas, West Hollywood, Beverly Hills, Santa Monica, Oxnard and Goleta.

### *Woolsey Fire and Recovery*

More recently, m6 has been providing post-disaster services to the City of Calabasas and the unincorporated areas of the County in the aftermath of the Woolsey Fire. m6 staff have provided damage assessments and related evaluations for residential, commercial, and flood control facilities affected by fire, to support postings of use restrictions or prohibitions per the ATC-20 evaluation program. These assessments provide the basis for further evaluations for existing damaged buildings to be repaired in conjunction with the provisions of the Existing Building Code, and inform the discussions with property owners and their design consultants.





Concurrent with damage assessment, the City of Calabasas initiated communication with owners of fire damaged properties to facilitate the process of recovery and re-building of damaged properties. Working in consultation with the City's Planning Division, m6 is developing process documents to assist with streamlining the City's Planning and Building plan check process. Elements of process development include allowances for like-for-like rebuilds, options for re-use of existing foundations, non-conforming structures, and requirements for debris removal from damaged properties. Key considerations are those process details which encourage rapid repair and reconstruction of damaged properties, minimize lengthy Planning and Building approval processes, while respecting the character of the neighborhoods and the spirit of the City's development process.

#### *Regulatory/Outside Agencies*

m6 staff has extensive experience coordinating reviews with outside agencies, including Fire Departments, Flood Control Districts, Water Districts, Fish and Game, Corps of Engineers, Coastal Commission, Caltrans, various departments of the County of Los Angeles, and the Regional Water Quality Control Board. Our staff members have both public and private design, development and review experience, and this diversity of experience allows for a unique insight and understanding of the nuances of project development, review, conditioning and approval. The m6 team, with their depth and diversity of experience, is provided to the City in combination with local presence, working knowledge of the disaster area, and specific capabilities as reflected below.





### *Specific Projects*

To illustrate our project specific expertise, we include the following projects with descriptions of related services. This is a sample of projects, and we can certainly provide additional project references should the City require this for review.

#### **AE Wright Footbridge (Calabasas, Ca)**

Project Management, Constructability Review, Agency Coordination, Environmental and Right of Way Approvals.

The AE Wright Footbridge is a pedestrian connection project originally funded by Caltrans Safe Routes to School (SR2S). The project concept was to provide a safe route across Las Virgenes Creek to AE Wright School from adjacent residential neighborhoods. The original design and engineers estimate significantly underestimated the actual cost of construction. The design was plagued by constructability issues related to creek geology, stream hydraulics and bridge foundation design, as well as environmental and easement issues. m6 completed a design and constructability review, and proceeded to take over management of design consultants and their PS&E and geotechnical studies to address design issues and prepare the construction documents for bid. Additionally, m6 worked with Caltrans to complete environmental review and permitting, and the adjacent school district to formalize an easement necessary for Caltrans Right of Way clearance. The project was formally funded by Caltrans utilizing the American Recovery and Reinvestment Act (ARRA) program, and completed in 2010.

#### **Mulholland Highway Permanent Restoration (Calabasas, Ca)**

Project Management, Project Funding, Agency Coordination

m6's Robert Woodward and Michelle Manigold provided project development and management services for this \$4.2 million dollar federally funded repair of a rural portion of Mulholland Highway south of Dry Canyon Cold Creek Road for the City of Calabasas. Mr. Woodward's role included the coordination of the project's environmental assessment and subsequent Categorical Exclusion, approval of the project and related funding through the Federal High Way Administration (FHWA) and Caltrans Local Programs Division (District7), and the coordination of the relocation of overhead and underground utilities. Challenges included the development of engineering designs for the repair of multiple deep landslides with the design and geotechnical engineer while maintaining traffic and adjacent trail access within the confines of existing right of way. Other challenges included coordination and engineering for the relocation of existing



(66kv/16kv) overhead electrical facilities by Southern California Edison (SCE), cable facilities owned by AT&T, Charter Cable and NextG Networks, as well as the interim relocation and high-lining of a water main owned by LVMWD.

*m6 Responsibilities: City project management, environmental approval and permitting, Caltrans and FHWA approval and funding, utility relocation and coordination, construction period management.*

### **Calabasas Highlands Master Plan of Drainage**

The Calabasas Highlands is a hillside community that is characterized by high density single family development in the context of a street and associated drainage system that is rural in nature. The development that occurs is infill in nature, typically involving large single family homes on small lots. The City requested m6 to work with staff to develop an 'in-house' analysis and update of the existing master plan to reflect 20 years of development and associated changes and drainage patterns, clarify areas of deficiency, recommendations for mitigation, and establish a prioritized list of projects. m6 worked with City staff to complete site surveys, as-built plan review, and develop a simplified hydrology that could be utilized by engineers and developers of single family homes to make their studies more consistent and appropriate to area drainage conditions.

*m6 Responsibilities: Drainage master plan update, coordination of staff and training in County of Los Angeles hydrologic methods, management of in-house drafting of master plan sheets and area hydrologic data, calculations and report preparation.*

**Lost Hills Road/US 101 Interchange and Overcrossing (Calabasas, Ca)** – Program Development, Project Management, Environmental Approval, Community and Agency Coordination.

The City of Calabasas is in the process of completing a program of arterial system improvements that was developed by the County of Los Angeles prior to the City's incorporation in 1991. The last of these improvements is the Lost Hills Interchange, a regional connection between Pacific Coast Highway (SR1) and US 101. The project completed its Project Study Report (PSR) in 2008. When m6's Robert Woodward assumed management of the Interchange in 2009, the approved PSR included 4 build and 2 no-build alternatives, none of which were considered acceptable to the community. Mr. Woodward developed the procurement process for a PA/ED and PS&E consultant to provide these necessary preliminary designs, environmental assessments and final design documents for the Interchange. In order to satisfy community concerns, a new Alternative



7 was developed supplemental to the previous Caltrans approval, which preserved the existing community access and relocated the north-bound on-ramp to a partial clover configuration. This new configuration requires the acquisition of 8.7 acres of right of way to the northeast of the existing interchange. The acquisition area, currently owned by the County of Los Angeles and utilized under a Joint Powers Agreement (JPA) by the County of Los Angeles Sanitary District. m6's Michelle Manigold assisted with project management, including management of environmental approvals through Caltrans under CEQA and NEPA. Community concerns relative to interchange geometric configuration, noise impacts, safety, pedestrian circulation and community access have been addressed in a series of community meetings, and the current design enjoys unanimous support by both of the adjacent community associations. The project was transitioned for final permitting and construction to Parsons in 2013 and is currently under construction.

*m6 Responsibilities: City project development and management, environmental approval and permitting, Caltrans approval of preliminary designs and bridge Type Selection, utility coordination.*

**Calabasas Mulholland Highway Scenic Corridor (Zone 1) (Calabasas, Ca) Project Management, Design, and Bid Support and Construction Period Services.**

m6 developed plans, specifications and engineers estimates (PS&E's) for the City of Calabasas for this first phase of implementation of the Mulholland Highway Master Plan between A.C. Stelle School and Declaration Avenue. m6's involvement included the attendance of meetings of the Traffic and Transportation Commission (TTC) and related workshops in which he presented preliminary geometric layouts and concept designs for community input and approval. Work included coordination with the City's Landscape Maintenance District (LMD) and Las Virgenes Municipal Water District (LVMWD) in the layout, sizing and installation of the project's irrigation system and service connections, and assisting the LMD with the development of PS&E's for landscape portion of the project. Services included support during bidding as well as project engineering and management during the construction phase of the project.

**Lindero Canyon Road/US 101 Interchange and Overcrossing (ASFP 3A) (Westlake Village, Ca) – Project Civil and Structural Engineering and Project Management**

m6 is providing civil design management and bridge engineering services for this roadway widening and overcrossing modification project for the City of Westlake Village. The project will widen the existing Lindero Canyon Road and overcrossing to 6 lanes, and provide for a Class 1 bikeway on the eastern side of the project. Working in



conjunction with the City's design engineer, m6's Robert Woodward has completed development of PS&E's for both civil and bridge structural components of the project. Civil improvements include roadway widening, grading, drainage, and gateway monumentation. Structural includes modification and seismic modeling and analysis of the existing bridge structure. Particular challenges on this project include the development of bridge barrier designs and geometric components that integrate bike and pedestrian safety in the context of bridge aesthetics and community gateway identifiers that will make the overcrossing unique in the region.

*m6 Responsibilities: City project management, engineering, Caltrans coordination and permitting, utility relocation and coordination, construction period services (specific submittal review, RFI response, field inspection and coordination).*

Reference: City of Westlake Village John Knipe, PE, City Engineer. 818 706 1613

**Agoura Road/Lindero Canyon Roadway/Bridge Improvements (ASFP 3B)**  
**(Westlake Village, Ca) – Project Civil and Structural Engineering, Project Management and Construction Period Services**

m6 provided civil design and bridge engineering services for this roadway and bridge widening project for the City of Westlake Village. Working in conjunction with the City's design engineer, m6's Robert Woodward developed PS&E's for both civil and bridge structural components of the project, and provided project management and construction engineering and construction support for this effort, distinguished as the first project approved under the County of Los Angeles Measure R program. The project's development required right of way acquisition, roadway engineering, permitting and air rights easements with Los Angeles County Flood Control District, and the design and construction coordination of pre-stressed box girder bridge segments. The project's success depended on extensive attention to design detailing, construction sequencing and coordination with local business to minimize impacts to access and traffic flow during construction. Mr. Woodward's role included bridge engineering, construction period structural construction management, and coordinating the preservation of existing underground utilities owned by AT&T and Verizon serving regional customers, as well as a 24" water main owned by LVMWD.

*m6 Responsibilities: City civil engineer, structural engineer, construction engineering, LA County Flood Control coordination and permitting, utility coordination, construction period services (specific submittal review, RFI response, field inspection and coordination).*



*m6 Consulting, Inc.  
Proposal for On-Call Plan Checking Services  
July 11, 2019*

**City of Westlake Village Community Park (Westlake Village, Ca) – Project Civil and Structural Engineering, Project Management and Construction Period Services**

m6 provided project management, planning and engineering services for the development of this 15 acre City facility, which includes baseball and soccer fields, a skate park and a 60,000 sf YMCA. Mr. Woodward assisted with site selection, preliminary cost evaluation, development of plans and specifications for the development of the park which included 1 million yards of grading and associated infrastructure of potable, recycled water, water main extensions, coordination with the local water district, and SCE for the permitting under their 66kV system. Other services included structural design of Park pump station buildings, retaining walls and inspection during construction. m6 provided plan review of the 60,000 square foot YMCA facility, which included a natatorium, exercise, basketball and food service facilities.

*m6 Responsibilities: City civil engineer, structural engineer, construction engineering, SCE coordination and permitting, Las Virgenes Municipal Water District and County of Los Angeles Fire Department coordination, construction period services (specific submittal review, RFI response, field inspection and coordination).*



## **REFERENCES**

- 1) Ms. Maureen Tamuri, AIA, Community Development Director, City of Calabasas.  
Phone: 818 224 1600. Email: [mtamuri@cityofcalabasas.com](mailto:mtamuri@cityofcalabasas.com).
- 2) Mr. Robert Yalda, PE, TE, Public Works Director/City Engineer, City of Calabasas.  
Phone: 818 224 1600. Email: [ryalda@cityofcalabasas.com](mailto:ryalda@cityofcalabasas.com).
- 3) Ms. Rosemarie Gaglione, Public Works Director, City of Oxnard.  
Phone: 805-385-8055. Email: [rosemarie.gaglione@oxnard.org](mailto:rosemarie.gaglione@oxnard.org).
- 4) Mr. Mark Pestrella, PE, Assistant Director, County of Los Angeles Department of Public Works. Phone: 626 458 4300. Email: [m.pestrel@dpw.lacounty.gov](mailto:m.pestrel@dpw.lacounty.gov)
- 5) Mr. John Kelly, PE, Deputy Director, County of Los Angeles Department of Beaches and Harbors. Phone: 310 305 9532. Email: [jkelly@bh.lacounty.gov](mailto:jkelly@bh.lacounty.gov)
- 6) Mr. Massood Eftekari, PE, Deputy Director, County of Los Angeles Department of Public Works. Phone: 626 458 4016 Email: [meftek@dpw.lacounty.gov](mailto:meftek@dpw.lacounty.gov)
- 7) Mr. Adam Ariki, PE, Assistant Deputy Director, County of Los Angeles Department of Public Works/Waterworks. Phone: 626 300-3300 Email: [AARIKI@dpw.lacounty.gov](mailto:AARIKI@dpw.lacounty.gov)



## **STAFF EXPERIENCE AND QUALIFICATIONS**

m6 has assembled a unique team of highly qualified professionals with local experience and diverse talents in the fields of civil and structural aspects of land development review.

### **Robert Woodward, PE**

*Position: Project Manager and Development Review Supervisor*

Mr. Woodward has provided plan check, development review, design and project management services for several jurisdictions including the Cities of Calabasas, Hermosa Beach, Goleta, Oxnard, Westlake Village and West Hollywood, as well as the 23 campuses of the California State University (CSU) System, the Office of the State Fire Marshal (OSFM), and the Marin County Community College District. Development review includes grading, drainage, life safety and structural plan check of projects from concept through construction for City Community Development and Public Works Departments. Mr. Woodward brings 20 years of building construction, inspection, plan review, design to his role as project manager and plan check supervisor. Mr. Woodward will serve as the City's point of contact and will provide plan check supervision for the m6 team.

### **Masoud Mahmoud, PE, LEED AP**

*Position: Project Director*

Mr. Mahmoud brings 25 years of local agency engineering, plan review and leadership, as well as management of large educational and public works development projects to his role as project director. As the former Associate Vice President of Construction and Campus Planning at Pepperdine University with over 20 years of extensive and varied higher education experience, he brings a valuable and unique perspective to the plan review process for our higher education projects. As a Civil Engineer with the Los Angeles County, Department of Public Works for 12 years, Mr. Mahmoud also brings a unique experience to our team relative to the inner workings of governmental entities as well as complex responsibilities for horizontal and vertical infrastructure design, construction, operations and maintenance. During his tenure with the Building and Safety Division, he supervised, inspected and processed plan checks, trained and supervised plan check engineers, initiated educational programs that included code interpretation guidelines, and maintained relationships with agencies and administrative authorities of the County, Cities and State. Mr. Mahmoud will provide management of m6 team members, coordinate reviews and maintain accountability for distributed reviews and turn-around times.





**Nicole Thompson, MS, CPE, EIT**

*Position: Development Reviewer*

Ms. Thompson performs review of grading, drainage, shoring and off-site infrastructure for site development and public works projects. She provides plan review for State-owned buildings and facilities for the Office of the State Fire Marshal (OSFM), inclusive of fire access, circulation and the hydraulic design of site piping and suppression systems. Ms. Thompson performs development review for the campuses of the California State University system for site improvements and building projects, inclusive of grading, drainage, utilities, disabled access, structural and life safety design of vertical building projects. She supports municipal clients with State and federal disaster assistance, providing coordination of grant funding and project specific applications.

**Zhanna Shin, MS, CPE**

*Position: Development Reviewer*

Ms. Shin has extensive experience in the review of development projects for the California State University (CSU) system, performs review of site improvements and complex building projects in the built environments of existing campus infrastructure. She provides reviews of grading, drainage, shoring and off-site infrastructure for site development and public works projects, as well as disabled access, structural and life safety design of vertical building projects. Ms. Shin performs plan review for State-owned buildings and facilities for the Office of the State Fire Marshal (OSFM), inclusive of fire access, circulation and the hydraulic design of site piping and suppression systems.

**Edward "Ed" Alexanians, PE, SE, MS**

*Position: Senior Structural Reviewer*

Mr. Alexanians brings more than 40 years of engineering experience to his role as senior structural engineer, with 27 years of plan checking for the County of Los Angeles, including the management of its District plan check operations. His design and review experience includes high and mid-rise buildings, commercial and multi-family occupancies, podium buildings and bridges. Mr. Alexanians' combination of depth of detailed design knowledge, coupled with experience in administration of engineering operations, makes him a powerful resource for the City.

**Jimmy Todorov, PE**

*Position: Project Civil/Infrastructure Review*

Mr. Todorov has 25 years of experience in a wide range of civil engineering projects. He has extensive expertise in the design and review of infrastructure, grading, and mass transit civil projects, working closely with the City of Los Angeles on various City and Metro projects throughout his career. Mr. Todorov has played a pivotal role in multiple



large transit projects, including the Expo II, Eastside (LRT), Orange, Red, Blue and Green Lines, as well as many other mass transit endeavors in California and the surrounding region. His blended knowledge of review, coordination and approval of grading, drainage, roadway and transit projects in complex built environments provides the City of Camarillo a valuable asset in the successful execution of site work reviews associated with complex development proposals.

**Victor Peterson**

*Position: Senior Project Manager (Municipal Administration)*

Mr. Victor Peterson has more than 37 years of municipal experience, with a background that spans the leadership and direction of both city planning and building and safety divisions of community development departments. Mr. Peterson completed his career in executive management with tenure of 22 years as Building Official and Environmental Sustainability Director for the City of Malibu. Prior to working in Malibu, Mr. Peterson served as Building Official for the County of Ventura, and well as Deputy Planning Director with the City of Camarillo. His responsibilities have included the oversight of plan review, code enforcement and building division operations in sophisticated regulatory environments, as well as the supervision of subordinate staff. He is well versed in the art of inter-departmental communication and coordination, as well as the business of tactful interaction with members of the community and design professionals alike.

**Farhad Zaltash, PE**

*Position: Senior Traffic Engineer*

Farhad Zaltash is a senior member of the m6 Consulting team, with a total of 32 years in the field of traffic engineering and transportation planning, 28 years with Los Angeles-Department-of-Transportation (LADOT), and 4 years with Cal trans-District-7. He has served in a managerial role for 23 years of his total career, overseeing a wide range of major transportation projects. He has been the recipient of four work-related recognition awards in traffic-engineering and transportation-planning fields in Los Angeles area, three awarded by the Los Angeles City Council members and one awarded by the Los Angeles Board-of-Public-Works-Commissioners.

This core of seasoned professionals forms a diversely talented team that brings a deep level of knowledge and expertise to the City of Hermosa Beach. They are complemented and supported by a technical plan review and support staff. These young professionals supplement their senior counterparts, providing a creative and energetic balance in project review, administration and execution. As a group, they represent m6's vision of organic growth for the future leadership of our company. We are proud to include their resumes, together with ours, in Attachment 1.



### **SUMMARY OF PROJECT TEAM MEMBERS AND QUALIFICATIONS**

The m6 principals are joined by a larger group of seasoned professionals with diverse talents in the fields of mechanical, electrical and plumbing review, structural engineering, grading and drainage review and inspection. These professionals and their areas of expertise are summarized below.

NAME	QUALIFICATIONS	DISCIPLINE
Robert P. Woodward, PE	Registered Civil Engineer Certified Plans Examiner	City Engineering, Infrastructure, Grading/Drainage/Site Plan Review
Masoud Mahmoud, PE	Registered Civil Engineer Certified Plans Examiner	Project Director/Team Management
Edward Alexanians, PE, SE	Registered Civil Engineer Registered Structural Engineer	Structural, Life Safety, Disabled Access Review
Jimmy Todorov, PE	Registered Civil Engineer	Roadway Design Grading and Drainage Review
Farhad Zaltash, PE	Registered Traffic Engineer	Traffic Engineering Traffic Control Review
Nicole Thompson, EIT, CPE	Development Review	Grading/ Drainage Review FEMA/ Funding
Zhanna Shin, CPE	Development Review	Grading/ Drainage Review
Luis Molina, EIT, CPE	Development Review	Grading/ Drainage Review
Rachel Williams, EIT	Development Review	Grading/ Drainage Review
Teal Pacyna	Electrical and Utility Engineering	Electrical and Telecom Review
Victor Peterson, CBO	Municipal Administration Code Administrator	Building Official Project Administration/Coordination
Louis Igert	Disaster Recovery Specialist	Program Coordination, Community Communication, FEMA Interface



### **5.0 CERTIFICATION OF PROPOSAL**

m6 has reviewed the Request for Proposal issued by the City of Hermosa Beach and has included the signed Certification of Proposal in Attachment 3.

### **6.0 NON COLLUSION AFFIDAVIT**

m6 has included the Non-Collusion Affidavit in Attachment 3.

### **7.0 INSURANCE**

m6 will procure and maintain in full force and effect during the term of agreement of insurance as presented in the sample Professional Services Agreement. A copy of m6's current Hermosa Beach certificate of insurance is included in Attachment 3.

### **8.0 CITY OF HERMOSA BEACH PROFESSIONAL SERVICES AGREEMENT**

m6 has reviewed the terms and conditions in the City's professional services agreement and are willing to sign the form as presented with Attachment 3.

### **6.0 COST PROPOSAL**

We have included a schedule of capabilities and related hourly rates in Attachment 2.

# Attachment 1

## Resumes

## Robert Woodward, PE, MS, CBO, CASp

Principal Engineer/Plan Check Supervisor



Mr. Woodward is a co-founding principal with more than 20 years of experience in design, construction, inspection, plan review and project management. His background reflects a blend of both public and private sector experience, including land development, grading, drainage, roadway, bridge and structure design. He has served local agencies as a development reviewer, building official, and city engineer. His background reflects a blend of both public and private sector experience, which provides for a balanced approach to project review and design engineering goals.

Mr. Woodward as principal engineer for m6 Consulting Inc. has served his public sector clients in the capacities of municipal engineering, development review, and project management. He supervises life safety, structural, disabled access, grading, drainage and infrastructure reviews for client cities and the CSU system. He regularly assists his client cities with the design and project execution of their internal projects, most recently the Calabasas Civic Center, Lost Hills/US 101 Interchange, Lindero Canyon/US 101 Interchange and the Westlake Village Community Park.

### EDUCATION

- ✓ MS, Structural Engineering,
- ✓ California State University at Northridge
- ✓ BS, Physics, University of Texas at Austin

### REGISTRATION

- ✓ PE, State of California
- ✓ Certified Access Specialist (CASp)
- ✓ Certified Building Official (CBO)

### ASSOCIATION

- ✓ American Society of Civil Engineers
- ✓ International Code Council
- ✓ American Society of Plumbing Engineers
- ✓ National Fire Protection Association
- ✓ American Public Works Association
- ✓ AASHTO

### KNOWLEDGE/SKILLS

- ✓ CBC/CRC Code Application and Compliance
- ✓ Structural Design and Review
- ✓ ASCE 7 and Related Structural Design Provisions
- ✓ Design of Bridges, Roadways, and Related Infrastructure
- ✓ AASHTO and FHWA Structural and Geometric Design Standards
- ✓ FEMA Regulations and Disaster Management

### PUBLIC SECTOR CONSULTATION

- Supervising plan check engineer for code compliance review of California State University system- wide projects.
- Supervising plan check engineer for Office of the State Fire Marshal and related projects.
- Interim Deputy City Engineer/Public Works Director functions for the cities of Westlake Village, Goleta, and Calabasas.
- Capital Projects Engineer, Cities of Goleta, Ventura, Camarillo, Thousand Oaks, Westlake Village and Big Bear Lake.
- Policy and procedure development and staff training in land development review, capital project design, infrastructure engineering.
- Capital project and program management for municipal clients.
- Provides grading, drainage, entitlement review and development conditioning for municipal clients.
- Hydrology/Hydraulic and Floodplain Management consultation.
- Management of multi-discipline teams of consultants performing environmental, civil/structural engineering and architectural designs.
- Structural design, Caltrans permitting and project management for the US 101/Lindero Canyon (Overcrossing) in the City of Westlake Village.
- Civil, structural design and project management of Agoura Road widening and bridge construction.
- Project management and design for development of 15 acre community park site including baseball, soccer fields and 60, 000 sq/ft Westlake Village YMCA facility.

# Masoud Mahmoud, PE, MS, MBA, LEED AP

Principal Civil Engineer



Mr. Mahmoud is the founding co-principal with more than 25 years of experience in plan review, construction management, project management, entitlement management and engineering of capital construction projects with extensive and varied experience in higher education and government organizations.

While at Pepperdine University as the Associate Vice President for six years, he oversaw the 830-acre Malibu campus of which 290-acres are developed with over 1.3 million square feet of facilities. He was responsible for the management of \$200 million of capital projects including master planning, design and construction. The University's "Campus Life Projects" was developed and led by Mr. Mahmoud including approximately \$450 million of capital improvements encompassing 9 projects adding 1.2 million square feet of new facilities.

## EDUCATION

- ✓ MBA, Pepperdine University
- ✓ MS, Structural Engineering, Cal State University, Northridge
- ✓ BS, Civil Engineering, University of Southern California

## REGISTRATION

- ✓ PE, State of California
- ✓ Certified Building Plan Examiner, International Conference of Building Officials
- ✓ LEED Accredited Professional, Green Building Institute

## ASSOCIATION

- ✓ American Society of Civil Engineers
- ✓ International Code Council
- ✓ American Society of Plumbing Engineers
- ✓ National Fire Protection Association
- ✓ National Fire Protection Association
- ✓ American Public Works Association
- ✓ Construction Management Association of America
- ✓ Project Management Institute

## KNOWLEDGE/SKILLS

- ✓ Code Analysis and Interpretation
- ✓ CBC/CRC Code Application and Compliance
- ✓ Certified Building Plan Examiner
- ✓ Multi-Jurisdictional Authority Coordination and Negotiation
- ✓ Entitlement, Design, Project and Construction Management
- ✓ Multi-Discipline Consultant Coordination
- ✓ Negotiations and Dispute Resolution

As a civil engineer with the Los Angeles County Department of Public Works for twelve years of progressive experience, Mr. Mahmoud held positions in the Building and Safety, Design, Water Works & Sewer Maintenance, Traffic & Lighting and Program Development Divisions. In a managerial position with the Building and Safety Division, he supervised, inspected and processed plan checks, trained and supervised plan check engineers, initiated educational programs that included code interpretations guidelines, and maintained relationships with other agencies and divisions.

## PUBLIC SECTOR CONSULTATION

- Supervising plan check engineer for structural & life safety, grading & drainage for the cities of Calabasas, West Hollywood and Hermosa Beach.
- Supervising plan check engineer for code compliance review of the California State University system- wide projects in advance of submittal to the State Fire Marshall and Department of State Architect.
- City engineering, development review and project management services for the cities of Calabasas, Hermosa Beach and Goleta.
- Municipal engineering for Las Virgenes Municipal Water District.
- Capital project engineer for cities of Goleta and Hermosa Beach.
- Regulatory compliance & evaluation, plan check, analysis and accurate interpretation of Federal, State, and Local codes.
- Strong understanding of engineering, architectural, structural, mechanical, electrical and construction related disciplines.
- Governmental rules, regulations and knowledge of inner workings of the various agencies.
- Excellent understanding of the complex responsibilities for horizontal and vertical infrastructure design, management, construction, operations, and maintenance.
- Strategic project consulting, entitlement, program, design, project, construction management and owner's representation for higher education, institutional and governmental projects.
- Visionary leadership in planning, development, design, construction and budgeting of capital and renovation projects.
- Leadership in setting strategic priorities, goals and objectives, to effectively support capital design and construction activities.



## Edward Alexanians, PE, SE

Senior Structural Engineer



Mr. Alexanians has more than 41 years of experience in civil and structural engineering design for both horizontal and vertical projects. His background reflects a blend of both public and private sector experience, which provides for a balanced approach to project review and design engineering goals.

Mr. Alexanians served as a senior and management-level engineer with the Los Angeles County Department of Public Works for 27 years. He served the public sector in the capacities of District Engineer, Senior Civil Engineer and Head of Building Plan Check section. As the Senior Plan Check Engineer, he was responsible for supervising and training of plan check staff, inspectors, permit technicians, interpreting building code requirements and reviewing complex structures on high visibility projects.

### EDUCATION

- ✓ Bachelor's Degree, Civil Eng.  
Tehran University, Iran
- ✓ Master's Degree, Civil Eng.  
Tehran University, Iran
- ✓ Master's Degree, Structural Eng.  
University of California at Los Angeles (UCLA)

### REGISTRATION

- ✓ SE, State of California
- ✓ PE, State of California
- ✓ Licensed Contractor, CA

### ASSOCIATION

- ✓ State of California Structural Licensing Exam Grader
- ✓ American Society of Civil Engineers
- ✓ International Code Council

### KNOWLEDGE/SKILLS

- ✓ Plan Checking of Complex Structures and Interpretation of Building Code
- ✓ Supervision and Training of Plan Check, Inspection and Permit Staff
- ✓ Knowledge and Implementation of Most Structural Programs.
- ✓ Principal Designer of Bridges and, Sewer Treatment Facilities
- ✓ Structural Design of Hospitals, Rehabilitation Center and Government Office Buildings
- ✓ Design of Department Stores, Shopping Centers and Residential Custom Homes

### PUBLIC SECTOR CONSULTATION

- Reviewed high-rise and mid-rise buildings, amusement rides at the Universal and Six-Flags Magic Mountain.
- Reviewed a five-story hotel, conversion of a three-story hotel into condominiums, multi-unit apartment, multi-story mixed use occupancy building and five story-story post tension concrete open parking structure.
- Reviewed residential, commercial, industrial, wood, steel, concrete, reinforced and unreinforced masonry buildings for the Los Angeles County Building Code compliance.
- Supervised plan checking, permitting and inspection services for the South Whittier office and contract cities of La Mirada and Santa Fe Springs.
- Interpreted Building Code requirements to applicants and staff.
- Provided mediation and conflict resolution between applicants and plan check engineers.
- Responded to Board of Supervisors' inquiries about the area's issues.
- Trained plan check staff and provided guidance on their projects. Balanced plan check workload among all County District offices.
- Damage assessment and retrofit design for numerous condominiums, warehouses and single family dwellings after the 1994 Earthquake.
- Structural design of several hotels with concrete podium and four story wood framing, single family dwellings and residential additions.
- Design of reinforced concrete, pre-stress and post-tensioned I beams, box girder and steel railroad bridges, traffic signal poles, retaining walls, vaults, box culverts, water reservoirs, formworks for bridge structures and shear pins for landslide stability.
- Design of masonry department stores with wood panelized roofing and masonry walls, shopping centers, and residential custom homes.
- Structural design of a reinforced concrete 100 - bed rehabilitation center, modification of government buildings, design of steel frame residential buildings and the structural design of a 400 - bed regional hospital.
- Design refinery platforms, pipe supports, sea water inter-tank skid, horizontal and vertical pressure vessels and their foundations. Plan checked vendor's shop drawings and material take-off.
- Principal designer of two 150 - bed and one 600 - bed reinforced concrete hospitals. A team member on the structural design of a steel hangar (250 feet span). Design of sewage treatment units and several residential buildings including a 12-story steel frame hotel.

## Jimmy Todorov, PE

Civil Engineer



### EDUCATION

- ✓ BS, Civil Engineering, University of Civil Engineering and Architecture, Sofia, Bulgaria

### REGISTRATION

- ✓ PE, State of California
- ✓ PE, Bulgaria

### ASSOCIATION

- ✓ American Society of Civil Engineers

### PROJECT EXPERIENCE

- ✓ Highways and Roadways
- ✓ Interchange Connectors
- ✓ Street Improvements
- ✓ Water and Sewer
- ✓ Grading and Drainage
- ✓ Parking Lots
- ✓ Bike Paths
- ✓ Metro Transit Rail
- ✓ Tunnels

### KNOWLEDGE/SKILLS

- ✓ Civil Design and review
- ✓ Design of Bridges, Roadways and Related Infrastructure
- ✓ Design of Mass Transit Projects
- ✓ Capital Project Coordination
- ✓ Project Management
- ✓ Project Administration

### COMPUTER SKILLS

- ✓ Inroads 8.03
- ✓ Storm Works
- ✓ Auto Cad
- ✓ Civil 3D
- ✓ Flow Master
- ✓ Enercalc
- ✓ RISA

Mr. Todorov has 25 years of experience in the design of a wide range civil engineering projects. He is a pragmatic and highly adaptable engineer with extensive expertise in the design and review of grading, drainage and civil infrastructure improvements, as well as mass transit civil works, working intently on various Los Angeles Metro projects throughout his career. He has played a pivotal role in several projects, namely the Expo II, Eastside (LRT), Orange, Red, Blue and Green Lines as well as other mass transit projects in United States and Internationally.

Mr. Todorov's positive attitude, exceptional attention to detail and ability to work to clear well documented parameters demonstrates consistent levels of excellence in difficult and time-conscious sensitive projects. He is dedicated, motivated and continually striving to maintain and develop new skills, and take on new challenges.

### Design Accomplishments

- Designed and prepared drawings for rehabilitation of seven major and residential streets in City of Costa Mesa.
- Responsible for design of various residential and commercial land developments, grading, drainage, parking lots, access roadways, driveways, street improvements, water, sewer and storm drain in City of Calabasas.
- Designed interchange, horizontal alignment, vertical profile, grading, drainage for three miles of four lanes highway and prepared cost estimates in City of Bakersfield.
- Designed exit ramp widening and cost estimates for alternatives for Avenue K Exit Ramp Widening Study in City of Santa Clarita.
- Designed two options for 12 miles of highway and interchange connectors to existing SR-91 and SR-15 in the City of Corona.
- Designed horizontal alignment and profile for 1.2 mile bike path along the flood control channel for the City of La Habra.
- Designed and produced contract drawings for final design of the kiss-and-ride parking lots and bike paths at Sepulveda Boulevard, Van Nays Boulevard and Woodley Avenue for the Los Angeles Metro Orange Line in City of Los Angeles.
- Designed and produced contract drawings for Wilshire Bus Rapid Transit System and assisted contractor for final design of horizontal alignment and profile for 13 mile bike path and resolved grading and drainage issues along the alignment for San Fernando Valley Bus Rapid Transit System.
- Designed track alignment for two miles of tunnels for Regional Connector Advanced Study and 10 miles of tunnels for Metro Westside Extension Transit Corridor Study in the City of Los Angeles.
- Designed and produced contract drawings for preliminary and final design of horizontal and vertical alignments for the Los Angeles Metro Red Line and assisted in preparation of construction documents for the Los Angeles Metro Green Line.
- Designed and produced contract drawings, including track alignment design for the yard and yard leads for Central Phoenix LRT.
- Designed track alignment for 20 miles of elevated guideway for Honolulu High-Capacity Transit Corridors Project in Hawaii.
- Designed of six miles track alignment for Exposition Transit Project (Phase III).
- Designed at-grade segments and intersection crossing of Alameda Street and First Street, as well as for six traction power supply substations for Eastside Light Rail Transit Extension in City of Los Angeles.
- Responsible for design and coordination of 50 km track alignment for the Riyadh Metro Project in Saudi Arabia.
- Designed track alignment for 2.1 km Tram System in Downtown Doha in Qatar

## Farhad Zaltash, PE

Senior Traffic Engineer



### EDUCATION

- ✓ B.S. Electrical Engineering, University of Southern California

### REGISTRATION

- ✓ PE – Traffic No.1594  
State of California

### ASSOCIATION

- ✓ Institute of Transportation Engineers
- ✓ Forensic Expert Witness Association

### PROJECT EXPERIENCE

- ✓ Traffic engineering design - traffic signal, signal timing
- ✓ Sign-and striping, traffic-detour and highway-lighting systems
- ✓ Transportation planning – traffic-impact-study, traffic element of environmental impact report
- ✓ Traffic operation – neighborhood traffic issues, traffic control warrant studies
- ✓ Major transportation corridor improvement projects
- ✓ Caltrans projects
- ✓ Metro projects and Call-for-Projects application process
- ✓ Local jurisdiction – traffic engineering services

### DISCIPLINE EXPERIENCE

- ✓ Traffic engineering
- ✓ Transportation planning
- ✓ Project management
- ✓ Construction management
- ✓ Program management
- ✓ Community outreach and public
- ✓ Elected officials coordination

Farhad Zaltash is a senior member of the m6 Consulting team, with a total of 32 years in the field of traffic engineering and transportation planning, 28 years with Los Angeles-Department-of-Transportation (LADOT), and 4 years with Caltrans-District-7. He has served in a managerial role for 23 years of his total career, overseeing a wide range of major transportation projects. He has been the recipient of four work-related recognition awards in traffic-engineering and transportation-planning fields in Los Angeles area, three awarded by the Los Angeles City Council members and one awarded by the Los Angeles Board-of-Public-Works-Commissioners.

Farhad Zaltash has extensive experience in interacting with elected officials and their staff on various transportation issues and projects. He regularly appears before and provides presentation to the Board-of-Transportation-Commissioners and transportation sub-committee of the City Council on different projects and issues.

He has been a member of the Institute-of-Transportation-Engineers (ITE), has participated in ITE seminars, published a paper and gave a presentation at the District-6-ITE-in-Palm-Desert-Seminar. The focus of the paper was the need for local transportation agencies to listen to community groups from projects' early-on stages, and be willing to make compromises during the course of the project for successful project implementation.

He has also been a member of the Forensic-Expert-Witness-Association (FEWA) where he has practiced as a forensic traffic engineer.

### PUBLIC SECTOR CONSULTATION

- Initiated, developed and successfully completed regionally significant transportation improvement projects in Los Angeles area as part of his LADOT experience.
- Worked on controversial projects, working collaboratively and in close coordination with the local council offices, building consensus with team members, community businesses and stakeholders for successful project implementation.
- Possesses strong technical background, rich in planning, operation and design.
- Managed contracts, contractors, consultants, requests-for-proposal (RFP's), and awarded contracts.
- Secured \$19M in transportation funding from MTA for a number of transportation projects in Los Angeles.
- Managed the City's traffic-management-center for three years, overseeing multiple ITS projects.
- Managed all aspects of assigned projects' finances and contributed to the development of his Division's annual budget.
- Trained and mentored young engineers in the field of transportation engineering capitalizing in his broad range of knowledge and experience.

## Nicole Thompson, MS, CPE, EIT

Development Review/Grant Program Coordinator



Ms. Thompson performs review of grading, drainage, shoring and off-site infrastructure for site development and public works projects. She provides plan review for State-owned buildings and facilities for the Office of the State Fire Marshal (OSFM), inclusive of fire access, circulation and the hydraulic design of site piping and suppression systems. Ms. Thompson performs development review for the campuses of the California State University system for site improvements and building projects, inclusive of grading, drainage, utilities, disabled access, structural and life safety design of vertical building projects. She supports municipal clients with State and federal disaster assistance, providing coordination of grant funding and project specific applications.

### EDUCATION

- ✓ Master of Science, Structural Engineering, California State University at Northridge
- ✓ Bachelor of Science, Civil Engineering, California State University at Northridge

### CERTIFICATION

- ✓ Certified Building Plans Examiner
- ✓ NCEES Licensed Engineer in Training

### ASSOCIATION

- ✓ International Code Council
- ✓ American Society of Civil Engineers
- ✓ American Public Works Association
- ✓ American Society of Plumbing Engineers
- ✓ AASHTO

### KNOWLEDGE/SKILLS

- ✓ Building Plan Review
- ✓ Drainage and Grading
- ✓ Project Management
- ✓ Document Control
- ✓ Communication Skills
- ✓ Administration
- ✓ Graphic Design

### COMPUTER SKILLS

- ✓ Enercalc
- ✓ Cost Works
- ✓ Primavera
- ✓ AutoCAD
- ✓ RISA
- ✓ RAM Structure
- ✓ Microsoft Project

Ms. Thompson has completed HMGP sub-applications for 404 mitigation projects in multiple jurisdictions, including the Cities of Goleta, Oxnard, West Hollywood and Beverly Hills. Project types range from seismic retrofits of buildings and seawalls, to emergency generators for essential facilities (police station, transfer station, wastewater treatment plant, and sewer lift station). She is well versed in sub-application development and BCR computation requirements, and has worked with FEMA/CAL OES staff in the development of complex retrofit programs for private property owners on behalf of public agencies.

Ms. Thompson's knowledge and experience ranges from building architectural and structural design to mechanical, electrical and plumbing systems and civil design, making her a valuable resource on diverse projects.

### PUBLIC SECTOR CONSULTATION

- Plan review for grading, drainage, shoring and infrastructure plans for the City of Hermosa Beach Department of Public Works. Examines and reviews commercial and residential building drainage, grading and low-impact development (LID). Responsible for preparing plan review check lists, updating City development review policies and procedures.
- Plans examiner for the City of Calabasas and West Hollywood Community Development Department. Examines commercial, residential and code enforcement cases for compliance with the California Building, Residential, Mechanical, Plumbing, Electrical and Energy Conservation Codes.
- Building/Oversight for Office of the State Fire Marshal (OSFM) reviews of State of California owned projects, including State colleges/universities, Board of Corrections/detention, Department of Motor Vehicle (DMV), State Parks and other buildings and facilities for life safety and NFPA standard compliance.
- Project management assistant for emergency relief, disaster assistance and federal aid projects, providing coordination of funding, program applications and project-specific programming with CAL OES, FEMA and FHWA on behalf of municipal clients.



## Zhanna Shin, MS, CPE

Development Review/Project Engineer



Ms. Shin performs review of grading, drainage, shoring and off-site infrastructure for site development and public works projects. She provides plan review for State-owned buildings and facilities for the Office of the State Fire Marshal (OSFM), inclusive of fire access, circulation and the hydraulic design of site piping and suppression systems. Ms. Shin performs development review for the campuses of the California State University system for site improvements and building projects, inclusive of grading, drainage, utilities, disabled access, structural and life safety design of vertical building projects.

### PUBLIC SECTOR CONSULTATION

- Plan review for grading, drainage, shoring and infrastructure plans for the City of Hermosa Beach Department of Public Works. Examines and reviews commercial and residential building drainage, grading and low-impact development (LID). Responsible for preparing plan review check lists, updating City development review policies and procedures.
- Plans examiner for the City of Calabasas and West Hollywood Community Development Department. Examines commercial, residential and code enforcement cases for compliance with the California Building, Residential, Mechanical, Plumbing, Electrical and Energy Conservation Codes.
- Building/Oversight for Office of the State Fire Marshal (OSFM) reviews of State of California owned projects, including State colleges/universities, Board of Corrections/detention, Department of Motor Vehicle (DMV), State Parks and other buildings and facilities for life safety and NFPA standard compliance.
- Disabled access review, inspections for public buildings, including schools and Title II entities.
- Capital projects engineering assistant for the recreational/park improvement projects. Coordinated the planning for 5 major park upgrades in the City of Goleta. Responsibilities include survey of the existing conditions of playground equipment, surfaces and facilities, research of the City's recreational needs assessment, equipment vendors and playground surfaces for compliance with disabled access requirements.
- Serving as project engineer for FEMA PA assistance and facility damage repairs for the Las Virgenes Municipal Water District (LVMWD) for their Calabasas and Westlake Plant Facilities.

### EDUCATION

- ✓ Master of Science, Structural Engineering, California State University, Northridge
- ✓ Bachelor of Science, Civil Engineering, California State University, Northridge

### KNOWLEDGE/SKILLS

- ✓ Project Management
- ✓ Document Control
- ✓ Plan Review
- ✓ Communication Skills
- ✓ Administration
- ✓ Graphic Design

### ASSOCIATION

- ✓ American Society of Civil Engineers
- ✓ American Public Works Association
- ✓ American Society of Plumbing Engineers
- ✓ AASHTO

### COMPUTER SKILLS

- ✓ Enercalc
- ✓ AutoCAD
- ✓ Risa
- ✓ Microsoft Project

## Luis Molina, EIT, CPE

Development Review/Project Engineer



Mr. Molina services as a plan examiner for m6 Consulting, providing structural, life-safety, grading and drainage review for college, university, health care, correctional and municipal projects for code compliance.

Mr. Molina is a graduate from the Civil Engineering and Construction Management Program at California State University Northridge. He is currently pursuing a master of science in structural engineering degree.

Mr. Molina enjoys seeing projects come to life. He was Project Manager for the Steel Bridge Competition at Cal State Northridge and helped his team earn 9<sup>th</sup> place at the National Student Steel Bridge Competition.

### PUBLIC SECTOR CONSULTATION

#### EDUCATION

- ✓ M.S. Structural Engineering, California State University at Northridge (Expected - May 2020)
- ✓ BS, Civil Engineering  
Minor in Business Management  
California State University at Northridge

#### CERTIFICATION

- ✓ NCEES Certified Engineer in Training
- ✓ Certified Building Plans Examiner

#### KNOWLEDGE/SKILLS

- ✓ Building Plan Review
- ✓ Project Management
- ✓ Drainage and Grading
- ✓ Document Control
- ✓ Communication Skills
- ✓ Administration

#### ASSOCIATION

- ✓ International Code Council
- ✓ American Society of Civil Engineers
- ✓ American Institute of Steel Construction
- ✓ American Public Works Association
- ✓ American Society of Plumbing Engineers
- ✓ AASHTO
- ✓ Society of Hispanic Professional Engineers

#### COMPUTER SKILLS

- ✓ RISA-3D
- ✓ HEC-RAS
- ✓ Enercalc
- ✓ AutoCAD
- ✓ RAM Structure
- ✓ Microsoft Project
- ✓ Microsoft Access
- ✓ Microsoft VBA

- Plans examiner for California State University system-wide plan review services and Marin Community College District in Marin County. Reviews drawings and specifications for completeness, accuracy, and code compliance with Division of State Architect (DSA), building, structural, mechanical, fire, electrical, plumbing, energy conservation, and disabled access codes.
- Plans examiner for the City of Calabasas and West Hollywood Community Development Department. Reviews commercial, residential and code enforcement cases for compliance with the California Building, Residential, Mechanical, Plumbing, Electrical and Energy Conservation Codes.
- Develops hydraulic studies for clients in Ventura County, studies include HEC-RAS analyses of channels and associated conveyance capacity to convey the drainage volumes from tributary areas and submittal to respective authorities.
- Plans examiner for Office of the State Fire Marshal (OSFM) reviews of State of California owned projects, including State colleges/universities, Board of Corrections/detention, Department of Motor Vehicle (DMV), State Parks and other buildings and facilities for life safety and NFPA standard compliance.
- Civil Engineering assistant for the City of Hermosa Beach Department of Public Works. Reviews, catalogs and processes commercial and residential building drainage, grading and low-impact development (LID).
- Capital projects engineering assistant for the City of Goleta. Assists with capital improvement projects such as acquisition of Southern California Edison owned street lights and bike lane project proposal and development.
- Civil Engineering assistant for the City of Calabasas in the development of Flood Hazard Prevention ordinance and implementation.
- Assists building inspectors in the field when engineering problems are encountered and advise on engineering matters.
- Assists with CASp field inspections and related report generation.



## Rachel Williams, EIT

Development Review/Public Works Program Assistant



### EDUCATION

- ✓ Bachelor of Science, Civil Engineering, California State University at Fresno

### CERTIFICATION

- ✓ NCEES Licensed Engineer in Training

### ASSOCIATION

- ✓ International Code Council
- ✓ American Society of Civil Engineers
- ✓ American Public Works Association
- ✓ American Society of Plumbing Engineers
- ✓ AASHTO

### KNOWLEDGE/SKILLS

- ✓ Building Plan Review
- ✓ Drainage and Grading
- ✓ Surveying
- ✓ Project Management
- ✓ Document Control
- ✓ Communication Skills
- ✓ Administration
- ✓ Graphic Design

### COMPUTER SKILLS

- ✓ Enercalc
- ✓ REVIT
- ✓ RISA
- ✓ AutoCAD
- ✓ ARCGIS
- ✓ ARCMAP
- ✓ EPANET
- ✓ Adobe Premiere
- ✓ Microsoft Project

Ms. Williams performs review of grading, drainage, shoring and off-site infrastructure for site development and public works projects. She provides plan review for State-owned buildings and facilities for the Office of the State Fire Marshal (OSFM), inclusive of fire access, circulation and the hydraulic design of site piping and suppression systems. Ms. Williams performs development review for the campuses of the California State University system for site improvements and building projects, inclusive of grading, drainage, utilities, disabled access, structural and life safety design of vertical building projects.

Ms. Williams supports municipal clients with State and federal disaster assistance, providing coordination of grant funding and project specific applications. She will serve as project engineer supporting the District's sub-applications for HMGP grant application development, Benefit-Cost-Analysis calculations, and associated engineering functions. Currently, she is supporting HMGP sub-application for 404 mitigation projects in multiple jurisdictions and is serving as project engineer for the development of a WIFIA application and associated financial instruments for the City of Oxnard's \$500 million relocation of their wastewater treatment facility.

Ms. Williams is a graduate of California State University at Fresno as a NCAA two time Academic and Athletic All-American Equestrian athlete. She is a multitasker and possesses strong communication, management and organizational skills.

### PUBLIC SECTOR CONSULTATION

- Development review for the City of Hermosa Beach Department of Public Works. Provides review of grading, drainage, shoring and infrastructure plans for commercial and residential projects, including plans associated with off-site public improvements and encroachment permit requests.
- Development review for the City of Calabasas. Examines commercial, residential and code enforcement cases for compliance with the California Building, Residential, Mechanical, Plumbing, Electrical and Energy Conservation Codes.
- Development review for the California State University System Wide complex building project plans specifications and calculations to ensure compliance with Division of the State Architect (DSA) and State Fire Marshal codes.
- Project management assistant for emergency relief, disaster assistance and federal aid projects, providing coordination of funding, program applications and project-specific programming with CAL OES, FEMA and FHWA on behalf of municipal clients.

# Teal Pacyna

Project Manager /Infrastructure and Permitting



Ms. Pacyna assists with project management and administration of capital design and construction projects. She supports the principal engineers and project managers with capital project design and coordination, submittal review, construction document review, bid review, project scheduling, proposal review and document control.

Ms. Pacyna graduated from the University of California in Santa Cruz with a BA in Environmental Science and a BA in History. She possesses strong communication, management and organizational skills with a passion for sustainable practices and green building.

## PUBLIC SECTOR CONSULTATION

### EDUCATION

- ✓ BA, Environmental Science, University of California Santa Cruz
- ✓ BA, History, University of California Santa Cruz

### CERTIFICATION

- ✓ GIS

### KNOWLEDGE/SKILLS

- ✓ Project Management
- ✓ Project Administration
- ✓ Document Control
- ✓ Traffic Control

### COMPUTER PROGRAM SKILLS

- ✓ ARC GIS
- ✓ HEC-RAS
- ✓ Microsoft Project
- ✓ Microsoft Office Suites

### ASSOCIATIONS

- ✓ American Society of Civil Engineers
- ✓ American Public Works Association
- ✓ Project Management Institute
- ✓ National Fire Protection Association
- ✓ International Association of Electrical Inspectors
- ✓ AASHTO

- Utility relocation design assistant and coordinator for the Roadside Drive Bridge Widening for the City of Agoura Hills. Managed and coordinated Utility notification to all the utility companies affected by bridge widening. Requests record drawings from utilities identifying conflicts on the job site. Coordinates record drawings with relocation plan. Works with Edison to relocate utility poles in conflict with bridge widening design.
- Civil engineering coordinator for the Las Virgenes Municipal Water District (LVMWD) Air-Vacuum Potable Water Device Relocation Project. Coordinated design team and Las Virgenes Municipal Water District (LVMWD) in processing permits. Organized and submitted design approvals for above ground units to the City of Los Angeles. Inspected site, identified utility conflicts and documented underground air-vacuum vaults. Prepared scope of work, construction detailing incorporating standard plans and organized bid schedule including material quantities.
- Civil engineering assistant for the Las Virgenes/Callegas Municipal Water District (CMWD) Interconnect Project. Assisted with the design of interconnect, preliminary design report and utility conflict management. Researched and identified existing utility conflicts followed by the design of interconnect alignment with CMWD. Assisted with preliminary design report submittal in conjunction with CMWD.
- Assistant project manager for the Pepperdine University Parking Lot Project located in Malibu. Assisted with securing entitlements for a proposed parking lot project in the Malibu Civic Center area. Researched and analyzed the City's zoning, Municipal, Local Coastal Plan and California Coastal Commission Codes pertaining to development requirements for the proposed project. Prepared land use and zoning code analysis to obtain a determination of use approval from the City's Planning Commission.

## Victor Peterson, CBO

Project Administration



### EDUCATION

- ✓ BS, Education  
Western Illinois University
- ✓ Associates Degree  
William Rainey Harper College
- ✓ Associate's Degree, Inspection Technology  
Los Angeles Trade Tech

### ASSOCIATION

- ✓ National Fire Protection Association
- ✓ California Building Officials
- ✓ International Code Council
- ✓ American Association of Code Enforcement
- ✓ Statewide California Association of Code Enforcement Officials

### KNOWLEDGE/SKILLS

- ✓ Code Analysis and Interpretation
- ✓ Certified Building Inspector
- ✓ Program Development
- ✓ Certified Professional Code Administrator
- ✓ Hazardous Materials Specialist
- ✓ Plan Review, Permit Processing, and Record Keeping
- ✓ Strategic Planning, Problem Solving and Team Building
- ✓ Department Leadership and Management

Mr. Victor Peterson has more than 37 years of experience in municipal planning, code enforcement, inspection, building and department development. His background spans the leadership and direction of both city planning and building and safety divisions of community development departments.

Mr. Peterson has recently completed a tenure of 22 years as Building Official and Environmental Sustainability Director for the City of Malibu. Prior to working in Malibu, Mr. Peterson served as Building Official for the County of Ventura, and well as Deputy Planning Director with the City of Camarillo. His responsibilities have included the oversight of plan review, code enforcement and building division operations in sophisticated regulatory environments, as well as the supervision of subordinate staff. He is well versed in the art of inter-departmental communication and coordination, as well as the business of tactful interaction with members of the community and design professionals alike.

Mr. Peterson's career began his career as a building inspector and code enforcement officer with the City of Redondo Beach. Over a period of 10 years he rose in the ranks of the City's building division, rising to the level of Deputy Building Official, supervising building inspection, code enforcement and permit operations and related staff. Mr. Robert Woodward has more than 20 years of experience in construction, inspection, plan review and project management. His background reflects a blend of both public and private sector experience, which provides for a balanced approach to project review and design engineering goals.

### PUBLIC SECTOR CONSULTATION

- As Building Official for City of Malibu, was responsible for the transition of their contract department into an in-house department.
- As the City of Malibu's first in-house Building Official, unified both City Planning and Building & safety Departments to create an Environmental Community Development Department (ECD).
- Developed a department that focused on water quality and environmental sustainability named the Environmental Sustainability Department (ESD).
- Responsible for the ESD which included enforcement and development of construction codes.
- Created a department that enforced Green Building and Sustainable Energy, and onsite wastewater treatment systems (OWTS) codes.
- Developed management programs for solid waste, recycling, storm water management and monitoring, water re-use & conservation, and management of the City's Special Biological Significance (ASBS).
- As a building Inspector, Inspected all types of construction project types for compliance with the plans, local ordinances and the building codes.
- As a code enforcement officer, responsible for opening and managing existing municipal cases, conducting investigation and enforcement of violations and regulating public health, safety and welfare.

## Attachment 2

### Key Personnel and Compensation



**ATTACHMENT 2**  
**COMPENSATION**  
**Engineering Services**  
**Fee Schedule**

---

**Hourly Public Works Services:**

Project Engineer .....	\$140.00
Project Designer/CAD Drafter .....	\$120.00
Certified Access Specialist (CASP) .....	\$125.00
Hydrology/Hydraulic Engineer.....	\$135.00
Structural Engineer .....	\$145.00
Map Review/City Surveyor.....	\$185.00
1 Man Survey Crew .....	\$175.00
2 Man Survey Crew .....	\$215.00
Minimum Survey Trip Charge .....	\$750.00
Office Survey/Mapping.....	\$135.00
Soils/Geotechnical Engineer .....	\$175.00
Principal Engineer .....	\$165.00

Rates are increased by a factor of 1.5 times for overtime, and for holiday and weekend assignments. All rates are subject to a 2% increase annually on January 1<sup>st</sup>.

**MISCELLANEOUS CHARGES: Hourly**

Administration.....	\$65.00
Direct Costs.....	Cost+15%
Outside Reproduction.....	Cost +15%
Materials & Expenses.....	Cost + 15%
Mileage (Portal to Portal).....	\$0.58/Mile

Effective January, 2019

Copyright 2019 m6  
Consulting, Inc. - All  
Rights Reserved

# Attachment 3

## Required Forms





## 6.3 Required Forms

### 6.3.1 Certification of Proposal

RFP #: 19-02

The undersigned hereby submits its proposal and agrees to be bound by the terms and conditions of this Request for Proposal (RFP).

1. Proposer declares and warrants that no elected or appointed official, officer or employee of the City has been or shall be compensated, directly or indirectly, in connection with this proposal or any work connected with this proposal. Should any agreement be approved in connection with this Request for Proposal, Proposer declares and warrants that no elected or appointed official, officer or employee of the City, during the term of his/her service with the City shall have any direct interest in that agreement, or obtain any present, anticipated or future material benefit arising therefrom.
2. By submitting the response to this request, Proposer agrees, if selected to furnish services to the City in accordance with this RFP.
3. Proposer has carefully reviewed its proposal and understands and agrees that the City is not responsible for any errors or omissions on the part of the Proposer and that the Proposer is responsible for them.
4. It is understood and agreed that the City reserves the right to accept or reject any or all proposals and to waive any informality or irregularity in any proposal received by the City.
5. The proposal response includes all of the commentary, figures and data required by the Request for Proposal
6. The proposal shall be valid for 90 days from the date of submittal.
7. Proposer acknowledges that the City may issue addendums related to this RFP and that the proposer has reviewed the following addendums which have been issued:

Addendum: \_\_\_\_\_

Addendum: \_\_\_\_\_

Addendum: \_\_\_\_\_

Addendum: \_\_\_\_\_

NONE

8. Proposer further acknowledges the provisions of any addendums issued have been incorporated into their proposal.

Signature of Authorized Representative:

Printed Name and Title:

Robert Woodward, Principal



6.3.2 Non-Collusion AffidavitRFP #: 19-02

The undersigned declares states and certifies that:

1. This proposal is not made in the interest of or on behalf of any undisclosed person, partnership, company, association, organization or corporation.
2. This proposal is genuine and not collusive or sham.
3. I have not directly or indirectly induced or solicited any other Proposer to put in a false or sham proposal and I have not directly or indirectly colluded, conspired, connived, or agreed with any other Proposer or anyone else to put in a sham proposal or to refrain from submitting to this RFP.
4. I have not in any manner, directly or indirectly, sought by agreement, communication, or conference with anyone to fix the proposal price or to fix any overhead, profit or cost element of the proposal price or to secure any advantage against the City of Hermosa Beach or of anyone interested in the proposed contract.
5. All statements contained in the Proposal and related documents are true.
6. I have not directly or indirectly submitted the proposal price or any breakdown thereof, or the contents thereof, or divulged information or data relative thereto, or paid, and will not pay, any fee to any person, corporation, partnership, company, association, organization, RFP depository, or to any member or agent thereof, to effectuate a collusive or sham proposal.
7. I have not entered into any arrangement or agreement with any City of Hermosa Beach public officer in connection with this proposal.
8. I understand collusive bidding is a violation of State and Federal law and can result in fines, prison sentences, and civil damage awards.

Signature of Authorized Representative:

A handwritten signature in blue ink, appearing to read 'Robert Woodward', written over a horizontal line.

Printed Name and Title:

Robert Woodward, Principal6.3.3 Compliance with Insurance RequirementsRFP #: 19-02

The selected consultant will be expected to comply with the City's insurance requirements contained within this RFP.

The undersigned declares states and certifies that:

1. Proposer agrees, acknowledges and is fully aware of the insurance requirements as specified in the Request for Proposal.



2. If selected, proposer agrees to accept all conditions and requirements as contained therein.

Signature of Authorized Representative:

A handwritten signature in blue ink, appearing to read 'Robert Woodward', written over a horizontal line.

Printed Name and Title:

Robert Woodward, Principal

### 6.3.4 Acknowledgement of Professional Services Agreement

RFP #: 19-02

The selected consultant will be expected to comply with and sign the City's Professional Services Agreement. Proposers should identify and/or indicate any exceptions to the Sample Professional Services Agreement included in Section 6.2. The City Attorney or their designee retains the discretion to accept or reject proposed exceptions or modifications to the City's Professional Services Agreement.

1. Proposer agrees, acknowledges and is fully aware of the conditions specified in the City's Sample Professional Services Agreement.
2. Proposer agrees to accept all conditions and requirements as contained therein with exceptions noted as follows:

---

---

---

---

---

---

Signature of Authorized Representative:

A handwritten signature in blue ink, appearing to read 'Robert Woodward', written over a horizontal line.

Printed Name and Title:

Robert Woodward, Principal



# CERTIFICATE OF LIABILITY INSURANCE

DATE (MM/DD/YYYY)

7/10/2019

THIS CERTIFICATE IS ISSUED AS A MATTER OF INFORMATION ONLY AND CONFERS NO RIGHTS UPON THE CERTIFICATE HOLDER. THIS CERTIFICATE DOES NOT AFFIRMATIVELY OR NEGATIVELY AMEND, EXTEND OR ALTER THE COVERAGE AFFORDED BY THE POLICIES BELOW. THIS CERTIFICATE OF INSURANCE DOES NOT CONSTITUTE A CONTRACT BETWEEN THE ISSUING INSURER(S), AUTHORIZED REPRESENTATIVE OR PRODUCER, AND THE CERTIFICATE HOLDER.

**IMPORTANT:** If the certificate holder is an **ADDITIONAL INSURED**, the policy(ies) must have **ADDITIONAL INSURED** provisions or be endorsed. If **SUBROGATION** IS **WAIVED**, subject to the terms and conditions of the policy, certain policies may require an endorsement. A statement on this certificate does not confer rights to the certificate holder in lieu of such endorsement(s).

<b>PRODUCER</b> Risk Strategies Company 2040 Main Street, Suite 450 Irvine, CA 92614  www.risk-strategies.com  CA DOI License No. 0F06675	<b>CONTACT NAME:</b> Risk Strategies Company	<b>FAX (A/C, No):</b>	
	<b>PHONE (A/C, No, Ext):</b> 949-242-9240	<b>E-MAIL ADDRESS:</b> syoung@risk-strategies.com	
<b>INSURED</b> m6 Consulting, Inc. 4165 Thousand Oaks Blvd., Ste 355 Westlake Village CA 91362	<b>INSURER(S) AFFORDING COVERAGE</b>		<b>NAIC #</b>
	<b>INSURER A:</b> Massachusetts Bay Insurance Co.		22306
	<b>INSURER B:</b> Hanover American Insurance Co.		36064
	<b>INSURER C:</b> Arch Insurance Company		11150
	<b>INSURER D:</b> Allmerica Financial Benefit Insurance Co		41840
	<b>INSURER E:</b>		
<b>INSURER F:</b>			

**COVERAGES****CERTIFICATE NUMBER:** 49903399**REVISION NUMBER:**

THIS IS TO CERTIFY THAT THE POLICIES OF INSURANCE LISTED BELOW HAVE BEEN ISSUED TO THE INSURED NAMED ABOVE FOR THE POLICY PERIOD INDICATED. NOTWITHSTANDING ANY REQUIREMENT, TERM OR CONDITION OF ANY CONTRACT OR OTHER DOCUMENT WITH RESPECT TO WHICH THIS CERTIFICATE MAY BE ISSUED OR MAY PERTAIN, THE INSURANCE AFFORDED BY THE POLICIES DESCRIBED HEREIN IS SUBJECT TO ALL THE TERMS, EXCLUSIONS AND CONDITIONS OF SUCH POLICIES. LIMITS SHOWN MAY HAVE BEEN REDUCED BY PAID CLAIMS.

INSR LTR	TYPE OF INSURANCE	ADDL INSD	SUBR WVD	POLICY NUMBER	POLICY EFF (MM/DD/YYYY)	POLICY EXP (MM/DD/YYYY)	LIMITS
A	<input checked="" type="checkbox"/> <b>COMMERCIAL GENERAL LIABILITY</b> <input type="checkbox"/> CLAIMS-MADE <input checked="" type="checkbox"/> OCCUR  GEN'L AGGREGATE LIMIT APPLIES PER: <input type="checkbox"/> POLICY <input checked="" type="checkbox"/> PRO-JECT <input type="checkbox"/> LOC <input type="checkbox"/> OTHER:	<input checked="" type="checkbox"/>	<input checked="" type="checkbox"/>	OD3A251052	3/14/2019	3/14/2020	EACH OCCURRENCE \$2,000,000 DAMAGE TO RENTED PREMISES (Ea occurrence) \$1,000,000 MED EXP (Any one person) \$5,000 PERSONAL & ADV INJURY \$2,000,000 GENERAL AGGREGATE \$4,000,000 PRODUCTS - COMP/OP AGG \$4,000,000 \$
D	<b>AUTOMOBILE LIABILITY</b> <input checked="" type="checkbox"/> ANY AUTO <input type="checkbox"/> OWNED AUTOS ONLY <input type="checkbox"/> SCHEDULED AUTOS <input checked="" type="checkbox"/> HIRED AUTOS ONLY <input checked="" type="checkbox"/> NON-OWNED AUTOS ONLY	<input checked="" type="checkbox"/>	<input checked="" type="checkbox"/>	AW3D678957	1/1/2019	1/1/2020	COMBINED SINGLE LIMIT (Ea accident) \$1,000,000 BODILY INJURY (Per person) \$ BODILY INJURY (Per accident) \$ PROPERTY DAMAGE (Per accident) \$ \$
	<b>UMBRELLA LIAB</b> <input type="checkbox"/> OCCUR <b>EXCESS LIAB</b> <input type="checkbox"/> CLAIMS-MADE  DED <input type="checkbox"/> RETENTION \$						EACH OCCURRENCE \$ AGGREGATE \$ \$
B	<b>WORKERS COMPENSATION AND EMPLOYERS' LIABILITY</b> ANY PROPRIETOR/PARTNER/EXECUTIVE OFFICER/MEMBER EXCLUDED? (Mandatory in NH) If yes, describe under DESCRIPTION OF OPERATIONS below	<input type="checkbox"/> Y / <input checked="" type="checkbox"/> N	<input checked="" type="checkbox"/>	WZ3A270713	4/8/2019	4/8/2020	<input checked="" type="checkbox"/> PER STATUTE <input type="checkbox"/> OTH-ER E.L. EACH ACCIDENT \$1,000,000 E.L. DISEASE - EA EMPLOYEE \$1,000,000 E.L. DISEASE - POLICY LIMIT \$1,000,000
C	Professional Liability			PAAEP0023602	3/15/2019	3/15/2020	Per Claim: \$1,000,000 Aggregate: \$2,000,000

**DESCRIPTION OF OPERATIONS / LOCATIONS / VEHICLES** (ACORD 101, Additional Remarks Schedule, may be attached if more space is required)

Projects as on file with the insured.  
The City of Hermosa Beach, its elected or appointed officers, officials, employees, agents and volunteers are named as additional insureds and primary/non-contributory clause applies to the general and auto liability policies and a waiver of subrogation applies to the general, auto and work comp policies-see attached endorsements.

**CERTIFICATE HOLDER**

City of Hermosa Beach  
Public Works Dept.  
1315 Valley Dr.  
Hermosa Beach CA 90254

**CANCELLATION**

SHOULD ANY OF THE ABOVE DESCRIBED POLICIES BE CANCELLED BEFORE THE EXPIRATION DATE THEREOF, NOTICE WILL BE DELIVERED IN ACCORDANCE WITH THE POLICY PROVISIONS.

AUTHORIZED REPRESENTATIVE

Michael Christian

© 1988-2015 ACORD CORPORATION. All rights reserved.

ACORD 25 (2016/03)

The ACORD name and logo are registered marks of ACORD

## Architects and Engineers

### *The following policy language is from Businessowners General Liability Coverage Part*

**NAMED INSURED:** m6 Consulting, Inc.

**POLICY NUMBER:** OD3A251052

The following are mandatory forms on the policy identified on the Certificate of Insurance:

391-1586 (08-16) BUSINESSOWNERS GENERAL LIABILITY SUPPLEMENTARY ENDORSEMENT

Additional Insured by Contract, Agreement or Permit

A. **Section II – Liability, C** – Who is an insured is amended to include as an additional insured any person or organization with whom you agreed in a written contract, written agreement or permit but only respect to liability for “bodily injury”, “property damage” or “personal and advertising injury” caused, in whole or in part, by your acts or omissions; or the acts or omissions of those acting on your behalf, but only with respect to:

- (i) **“Your work”** for the additional insured(s) designated in the contract, agreement or permit including “bodily injury” or “property damage” included in the “products - completed operations hazard” only if this Coverage Part provides such coverage;
- (ii) Premises you own, rent, lease, or occupy; or
- (iii) Your maintenance, operation or use of equipment leased to you.

\*Definition: **“Your work”** a. Means: (1) Work or operations performed by you or on behalf; and (2) materials, parts or equipment furnished in connection with such work or operations; b. Includes (1) warranties or representations made at any time with respect to the fitness, quality, durability, performance or use of “your work”; and (2) the providing of or failure to provide warnings or instructions.

This provision does not apply:

- (1) Unless the written contract or written agreement has been executed or permit has been issued prior to the “bodily Injury”, “property damage”, “personal injury” or “advertising injury”.
- (2) To any person or organization Included as an Insured by an endorsement Issued by us and made part of this Coverage Part.
- (3) To any lessor of equipment (a) After the equipment lease expires; or (b) If the “bodily Injury”, “property damage”, “personal injury” or “advertising Injury” arises out of sole negligence of the lessor.
- (4) To any: (a) Owners or other Interests from whom land has been leased which takes place after the lease for the land expires; or (b) Managers or lessors of premises if: (i) The occurrence takes place after you cease to be a tenant in that premises; or (ii) The “bodily injury”, “property damage”, “personal injury” or “advertising injury” arises out of structural alterations, new construction or demolition operations performed by or on behalf of the manager or lessor.
- (5) To “bodily injury”, “property damage” or “personal and advertising injury” arising out of the rendering of or failure to render any professional services.

This exclusion applies even if the claims against any insured allege negligence or other wrongdoing in the supervision, hiring, employment, training or monitoring of others by that insured, if the “occurrence” which caused the “bodily injury” or “property damage” or the offense which caused the “personal and advertising injury” involved the rendering of or failure to render any professional services by or for you.

### **Other Insurance Primary & Non-Contributory**

The following paragraph is added to **SECTION III – COMMON POLICY CONDITIONS, H – Other Insurance: Additional Insured – Primary and Non-Contributory**. If you agree in a written contract, written agreement or permit that the insurance provided to any person or organization included as an Additional Insured under **SECTION II – Liability, C. Who is an Insured** is primary and non-contributory, the following applies: If other valid and collectible insurance is available to the Additional Insured for a loss covered under **SECTION II – LIABILITY** of this Coverage Part, our obligations are limited as follows:

- (1) **Primary Insurance:** This insurance is primary to other insurance that is available to the Additional Insured which covers the Additional Insured as a Named Insured. We will not seek contribution from any other insurance available to the Additional Insured except: **(a)** For the sole negligence of the Additional Insured; **(b)** When the Additional Insured is an Additional Insured under another primary liability policy; or **(c)** When **b.** below applies. If this insurance is primary, our obligations are not affected unless any of the other insurance is also primary.
- (2) **Excess Insurance:**
  - (a)** This insurance is excess over any of the other insurance, whether primary, excess, contingent or on any other basis:
  - (i)** That is Fire, Extended Coverage, Builder's Risk, Installation Risk or similar coverage for “your work”;
  - (ii)** That is Fire insurance for premises rented to the Additional Insured or temporarily occupied by the Additional Insured with permission of the owner;

No coverage is provided by this Notice, nor can it be construed to replace any provisions of the policy (including its endorsements). If there is any conflict between this Notice and the policy (including the endorsements), the provisions of the policy (including its endorsements) shall prevail.

- (iii) That is insurance purchased by the Additional Insured to cover the Additional Insured's liability as a tenant for "property damage" to premises rented to the Additional Insured or temporarily occupied by the Additional Insured with permission of the owner; or
- (iv) If the loss arises out of the maintenance or use of aircraft, "autos" or watercraft to the extent not subject to Exclusion g. of **SECTION II - LIABILITY. B. Exclusions, 1. Applicable to Business Liability Coverage.**
- (v) That is insurance available to you for your participation in any past or present "unnamed joint venture".
- (vi) That is any insurance you may have that provides coverage for your professional services.

(b) When this insurance is excess, we will have no duty to defend the insured against any "suit" if any other insurer has a duty to defend the insured against that "suit". If no other insurer defends, we will undertake to do so, but we will be entitled to the insured's rights against all those other insurers.

(c) When this insurance is excess over other Insurance, we will pay only our share of the amount of the loss, if any, that exceeds the sum of:

- (i) The total amount that all such other insurance would pay for the loss in the absence of this insurance; and
- (ii) The total of all deductible and self-insured amounts under all that other insurance.

We will share the remaining loss, if any, with any other insurance that is not described in this Excess Insurance provision and was not bought specifically to apply in excess of the Limits of Insurance shown in the Declarations of this Coverage part.

### (3) Method Of Sharing

If all of the other insurance permits contribution by equal shares, we will follow this method also. Under this approach, each insurer contributes equal amounts until it has paid its applicable limit of insurance or none of the loss remains, whichever comes first. If any of the other insurance does not permit contribution by equal shares, we will contribute by limits. Under this method, each insurer's share is based on the ratio of its applicable limit of insurance to the total applicable limits of insurance of all insurers.

### Per Project Aggregate

The following changes are made to **SECTION II - LIABILITY**:

1. The following is added to **SECTION II - LIABILITY, D. Liability and Medical Expenses Limits of Insurance**, paragraph 4:

The Aggregate Limits of Insurance apply separately to each of "your projects" or each "location" listed in the Declarations.

2. For the purpose of coverage provided by this endorsement only, the following is added to **SECTION II - LIABILITY, F. Liability and Medical Expenses Definitions**:

1. "Your project" means:

- a. Any premises, site or "location" at, on, or in which "your work" is not yet completed; and
- b. Does not include any "location" listed in the Declarations.

2. "Location" means premises involving the same or connecting lots, or premises whose connection is interrupted only by a street, roadway, waterway or right-of-way of a railroad.

### Separation Of Insureds

Except with respect to the Limits of Insurance, and any rights or duties specifically assigned in this Coverage Part to the first Named Insured, this insurance applies: **a.** As if each Named Insured were the only Named Insured; and, **b.** Separately to each insured against whom claim is made or "suit" is brought.

### Waiver Of Subrogation

The **TRANSFER OF RIGHTS OF RECOVERY AGAINST OTHERS TO US Condition (Section IV – COMMERCIAL GENERAL LIABILITY CONDITIONS)** is amended by the addition of the following:

We waive any right of recovery we may have against the person or organization *where required by written contract* because of payments we make for injury or damage arising out of your ongoing operations or "your work" done under a contract with that person or organization and included in the "products-completed operations hazard". This waiver applies only to the person or organization *where required by written contract*.

### Notice Of Cancellation

For any statutorily permitted reason other than non-payment of premium, the number of days required for notice of cancellation, as provided in paragraph 2. of either the CANCELLATION Common Policy Condition or as amended by an applicable state cancellation endorsement, is increased to **90 Days**.



**AUTHORIZED REPRESENTATIVE**

*\*From Hanover Forms: 391-1003 (08/16); 391-1445 (08/16); 391-1586 (08/16), 391-1003 (08/16)*

No coverage is provided by this Notice, nor can it be construed to replace any provisions of the policy (including its endorsements). If there is any conflict between this Notice and the policy (including the endorsements), the provisions of the policy (including its endorsements) shall prevail.

THIS ENDORSEMENT CHANGES THE POLICY. PLEASE READ IT CAREFULLY.

## BLANKET ADDITIONAL INSURED – PRIMARY AND NON-CONTRIBUTORY

This endorsement modifies insurance provided under the following:

### BUSINESS AUTO COVERAGE FORM

**A. The following is added to SECTION II – LIABILITY COVERAGE, Paragraph A.1. Who Is An Insured:**

**Additional Insured if Required by Contract**

If you agree in a written contract, written agreement or written permit that a person or organization be added as an additional "insured" under this Coverage Part, such person or organization is an "insured"; but only to the extent that such person or organization qualifies as an "insured" under paragraph **A.1.c.** of this Section.

If you agree in a written contract, written agreement or written permit that a person or organization be added as an additional "insured" under this Coverage Part, the most we will pay on behalf of such additional "insured" is the lesser of:

- (1) The Limits of Insurance for liability coverage specified in the written contract, written agreement or written permit; or
- (2) The Limits of Insurance for Liability Coverage shown in the Declarations applicable to this Coverage Part.

Such amount shall be part of and not in addition to the Limits of Insurance shown in the Declarations applicable to this Coverage Part. Regardless of the number of covered "autos", "insureds", premiums paid, claims made or vehicles involved in the "accident", the most we will pay for the total of all damages and "covered pollution cost or expense" combined resulting from any one "accident" is the Limit of Insurance for Liability Coverage shown in the Declarations.

**B. The following is added to SECTION IV – BUSINESS AUTO CONDITIONS, Paragraph B. General Conditions, subparagraph 5. Other Insurance:**

**Primary and Non-Contributory**

If you agree in a written contract, written agreement or written permit that the insurance provided to a person or organization who qualifies as an additional "insured" under **SECTION II – LIABILITY COVERAGE, Paragraph A.1. Who Is An Insured**, subparagraph **Additional Insured if Required by Contract** is primary and non-contributory, the following applies:

The liability coverage provided by this Coverage Part is primary to any other insurance available to the additional "insured" as a Named Insured. We will not seek contribution from any other insurance available to the additional "insured" except:

- (1) For the sole negligence of the additional "insured"; or
- (2) For negligence arising out of the ownership, maintenance or use of any "auto" not owned by the additional "insured" or by you, unless that "auto" is a "trailer" connected to an "auto" owned by the additional "insured" or by you; or
- (3) When the additional "insured" is also an additional "insured" under another liability policy.

**C. This endorsement will apply only if the "accident" occurs:**

1. During the policy period;
2. Subsequent to the execution of the written contract or written agreement or the issuance of the written permit; and
3. Prior to the expiration of the period of time that the written contract, written agreement or written permit requires such insurance to be provided to the additional "insured".

**D. Coverage provided to an additional "insured" will not be broader than coverage provided to any other "insured" under this Coverage Part.**

ALL OTHER TERMS, CONDITIONS, AND EXCLUSIONS REMAIN UNCHANGED.



#### 14. AUTO LOAN PHYSICAL DAMAGE EXTENSION

The following is added to **SECTION III - PHYSICAL DAMAGE COVERAGE, C. Limit Of Insurance** provision:

When a "loss" results in a total loss to a covered auto you own for which a Loss Payee is designated in this policy, the most we will pay for "loss" in any one "accident" is the greater of:

1. The actual cash value of the damaged or stolen property as of the time of the "loss"; or
2. The outstanding balance of the initial loan, less any amounts for taxes, overdue payments, overdue payment charges, penalties, interest, any charges for early termination of the loan, costs for Credit Life Insurance, Health, Accident or Disability Insurance purchased with the loan, and carry-over balances from previous loans.

#### 15. AUTO LEASE PHYSICAL DAMAGE EXTENSION

The following is added to **SECTION III - PHYSICAL DAMAGE COVERAGE, C. Limit Of Insurance** provision:

If, because of damage, destruction or theft of a covered "auto", which is a long-term leased "auto", the lease agreement between you and the lessor is terminated, "we" will pay the difference between the amount paid under paragraph **C. LIMIT OF INSURANCE 1. or 2.** and the amount due at the time of "loss" under the terms of the lease agreement applicable to the leased "auto" which you are required to pay: less any fees to dispose of the auto; any overdue payments; financial penalties

imposed under a lease for excessive use, abnormal wear and tear or high mileage; security deposits not refunded by the lessor; cost for extended warranties, Credit Life Insurance, Health, Accident or Disability Insurance purchased with the loan; and carry over balances from previous leases.

This coverage applies only to the initial lease for the covered "auto" which has not previously been leased. This coverage is excess over all other collectible insurance.

#### SECTION IV - CONDITIONS

##### 16. DUTIES IN THE EVENT OF ACCIDENT, CLAIM, SUIT OR LOSS

The following is added to **SECTION IV - BUSINESS AUTO CONDITIONS, A. Loss Conditions, 2. Duties In The Event Of Accident, Claim, Suit Or Loss:**

- d. Knowledge of any "accident", claim, "suit" or "loss" will be deemed knowledge by you when notice of such "accident", claim, "suit" or "loss" has been received by:
  - (1) You, if you are an individual;
  - (2) Any partner or insurance manager if you are a partnership; or
  - (3) An executive officer or insurance manager if you are a corporation.

##### 17. BLANKET WAIVER OF SUBROGATION

Paragraph **5. Transfer Of Rights Of Recovery Against Others To Us, SECTION IV - BUSINESS AUTO CONDITIONS, A. Loss Conditions** is replaced by the following:

Includes copyrighted material of Insurance Services Office, Inc. with its permission.

Copyright, Insurance Services Office, Inc., 1996

461-0155 (9-97)



**5. Transfer Of Rights Of Recovery  
Against Others To Us**

If any person or organization to or for whom we make payment under this Coverage Form has rights to recover damages from another, which have not been waived through the execution of an "insured contract", written agreement, or permit, prior to the "accident" or "loss" giving rise to the payment, those rights to recover damages from another are transferred to us. That person or organization must do everything necessary to secure our rights and must do nothing after the "accident" or "loss" to impair them.

**18. UNINTENTIONAL FAILURE TO  
DISCLOSE INFORMATION**

The following is added to **SECTION IV - BUSINESS AUTO CONDITIONS. B. General Conditions**, paragraph 2. **Concealment, Misrepresentation Or Fraud:**

Your unintentional error in disclosing, or failure to disclose, any material fact existing after the effective date of this Coverage Form shall not prejudice your rights under this Coverage Form. However, this provision does not affect our right to collect additional premium or exercise our right of cancellation or nonrenewal.

**19. HIRED AUTO - WORLDWIDE  
COVERAGE**

The following is added to **SECTION IV - Business Auto Conditions, B. General Conditions**, paragraph 7. **Policy Period, Coverage Territory** provision:

- e. Outside the coverage territory described in a., b., c., and d. above for an "accident" or "loss" resulting from the use of a covered "auto" you hire, without a driver, or your employee hires without a driver, at your direction, for the purpose of conducting your business, for a period of 30 days or less, provided the suit is brought within The United States of America or its territories or possessions.

**SECTION V - DEFINITIONS**

**20. MENTAL ANGUISH**

Paragraph **C. "Bodily injury"**, **SECTION V - DEFINITIONS** is replaced by the following:

- C. "Bodily injury" means bodily injury, sickness or disease sustained by a person including death or mental anguish resulting from any of these.

Includes copyrighted material of Insurance Services Office, Inc. with its permission.

Copyright, Insurance Services Office, Inc., 1996

**461-0155 (9-97)**

## WORKERS COMPENSATION AND EMPLOYERS LIABILITY INSURANCE POLICY

### **WAIVER OF OUR RIGHT TO RECOVER FROM OTHERS ENDORSEMENT – CA**

**This endorsement changes the policy to which it is attached effective on the inception date of the policy unless otherwise stated.**

**This endorsement effective on 4/8/2019 at 12:01 am standard times forms a part of Policy No. WZ3A270713**

**of the** Hanover American Insurance Co.

**issued to:** m6 Consulting, Inc.

**Premium (if any) \$**



**Authorized Representative**

We have the right to recover our payments from anyone liable for an injury covered by this policy. We will not enforce our right against the person or organization named in the Schedule. (This agreement applies only to the extent that you perform work under a written contract that requires you to obtain this agreement from us)

You must maintain payroll records accurately segregating the remuneration of your employees while engaged in the work described in the Schedule.

The additional premium for this endorsement shall be 2.000% of the California workers' compensation premium otherwise due on such remuneration.

### **Schedule**

#### **Person or Organization**

ANY PERSON OR ORGANIZATION WITH WHOM YOU AGREE IN WRITING TO WAIVE YOUR RIGHT TO RECOVER AGAINST THEM. YOU MUST AGREE TO THIS WAIVER PRIOR TO THE DATE OF LOSS

**Job Description: Projects as on file with the insured**

WC 252 040 84