

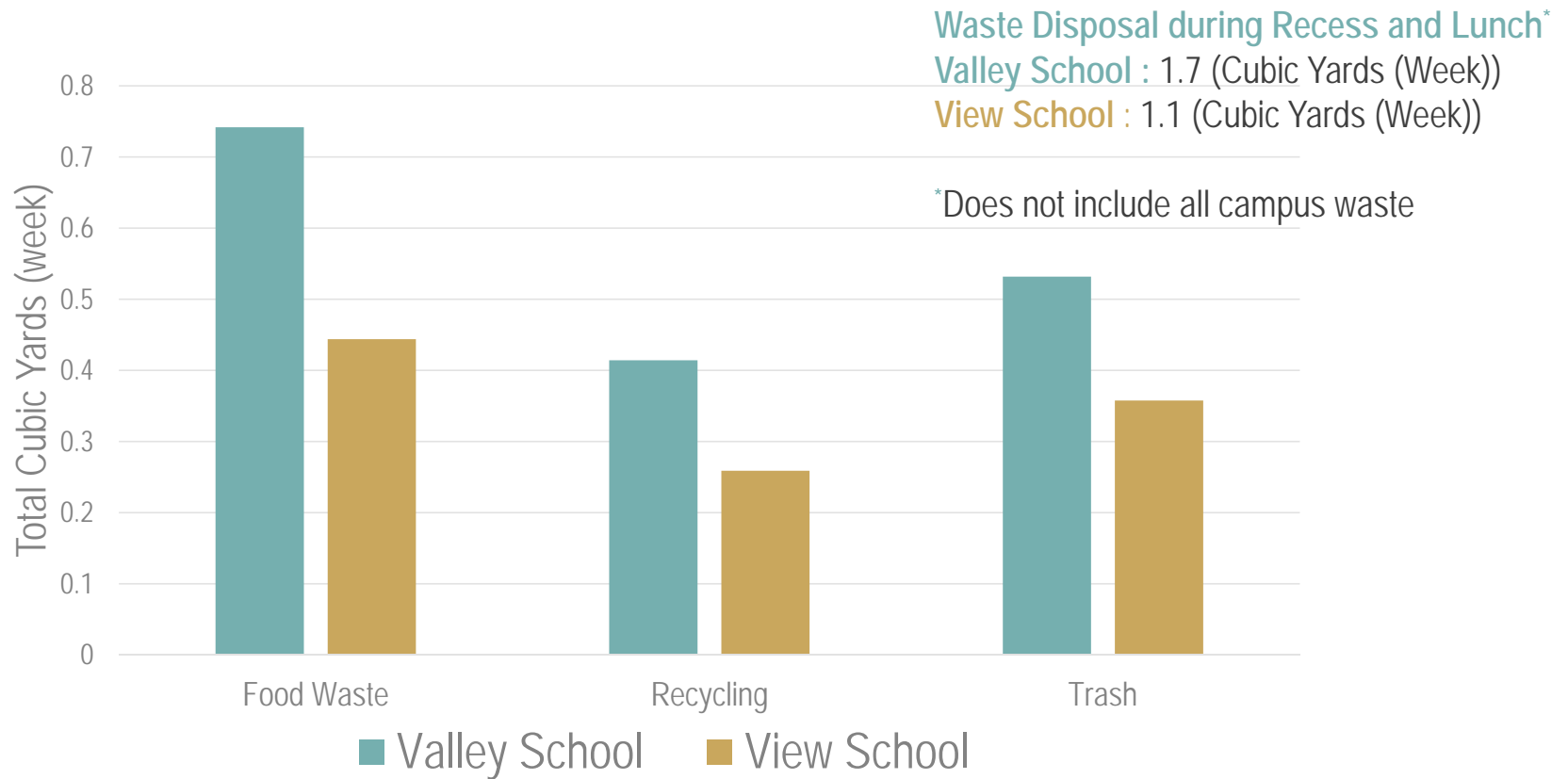


HERMOSA BEACH CITY SCHOOL DISTRICT FOOD WASTE SURVEY

Goal: Survey waste disposal practices during recess and lunch

- Hermosa View School: Tuesday January 22, 2018 (9:45AM-2:00PM)
- Hermosa Valley School: Tuesday February 6, 2018 (9:30AM-2:00PM)
- City of Hermosa Beach and Athens Services Staff

SURVEY RESULTS



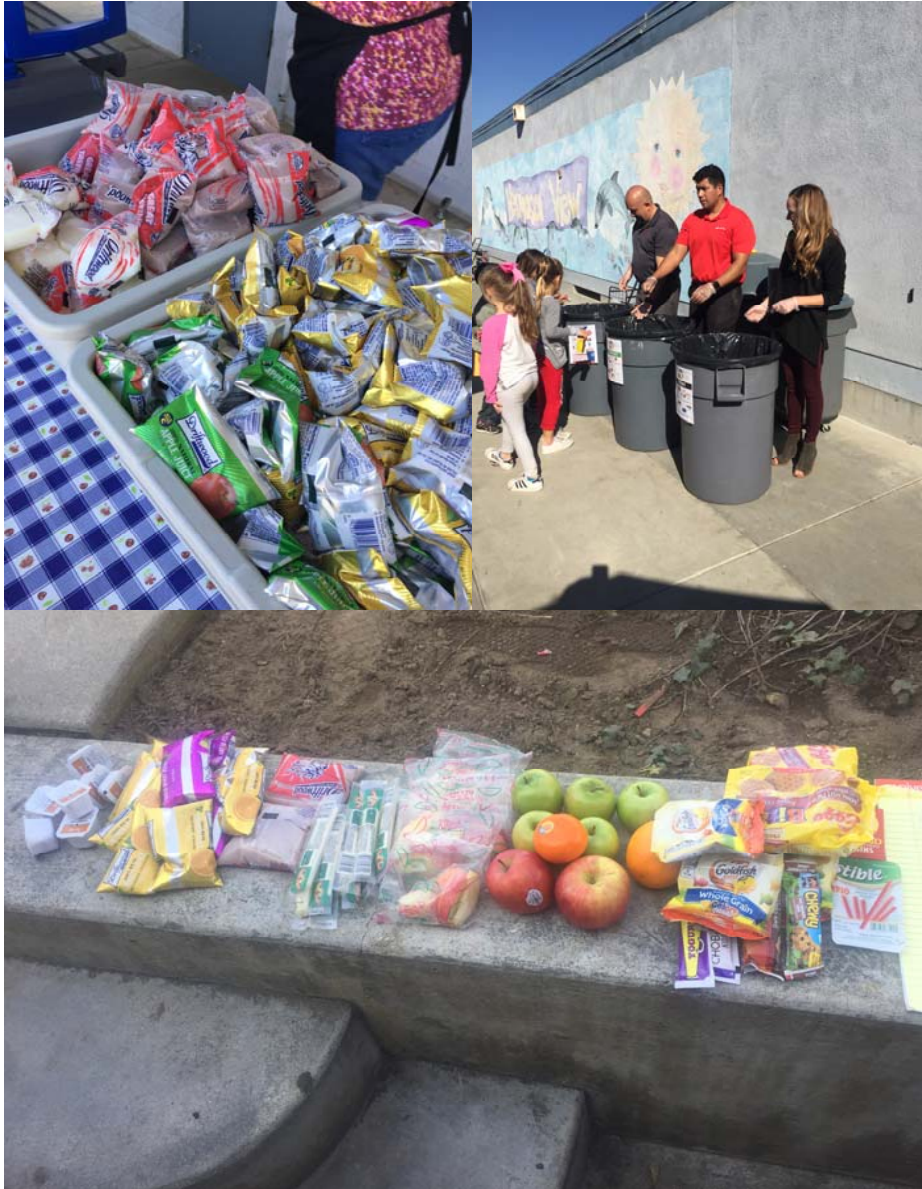
FOOD RECOVERY: VIEW SCHOOL

Food Recovered	QTY	Redistributed	Remaining	
Apple	1	1	0	
Yoghurt	1	0	1	
Banana	18	12	6	
Cutie	1	0	1	
Milk	3	0	3	
Juice	2	1	1	
Bottle Water	2	1	1	Weekly Estimate
Grilled Cheese	2	0	2	
TOTAL ITEMS	30	15	15	225
TOTAL WT. (LBS)	5.7		2.85	14.25

Noon-aid actively recovers and redistributes food

FOOD RECOVERY: VALLEY SCHOOL

Food Recovered	QTY	Redistributed	Remaining	
Apple	12		12	
Yoghurt	2		2	
Cutie	1		1	
Milk	8	2	6	
Juice	9		9	
Goldfish packets	3		3	
Cheese Stick	12		12	
Raisens (box)	1		1	
Salami (stick)	1		1	
Waffles (wrapped)	4		4	Weekly Estimate
Granola Bar	3		3	
TOTAL ITEMS	56	2	54	270
TOTAL WT. (LBS)	10.61		10.26	53.05



How to Reduce Food Waste

- Educating parents and students:
 - Food selection and preferences
 - Portion sizes
- Milk/juice/water dispenser (reusable cups)
- Food Donation Table Clearly Labelled
- On-site composting programs



Other Areas for Waste Reduction

- Plastic Film/ Packaging
 - Education e.g trash free lunch
 - Alternatives for Utensils and Straws (reusable / compostable)
- Styrofoam Trays
 - 2000 trays week = 72,000 trays year
 - Alternatives: reusable or paper