

**3/26/19 AGENDA, ITEM 6a - GREENBELT INFILTRATION PROJECT NEXT STEPS
SUPPLEMENTAL EMAIL AND ATTACHMENTS SUBMITTED BY PETER TUCKER TO THE
CITY MANAGER'S OFFICE ON 3/26/19 AT 6:24 A.M.**

From: peter@electpetertucker.com
To: [City Clerk: Ann Yang](#)
Cc: [Suja Lowenthal](#)
Subject: FW: 6 (a) MUNICIPAL MATTERS GREENBELT INFILTRATION PROJECT NEXT STEPS
Date: Tuesday, March 26, 2019 6:24:23 AM

Sorry for the second e-mail the first e-mail did not read correctly

-----Original Message-----

From: peter@electpetertucker.com/spam <peter@electpetertucker.com>
Sent: Tuesday, March 26, 2019 6:18 AM
To: 'cityclerk@hermosabch.org' <cityclerk@hermosabch.org>
Cc: 'Ann Yang' <anny@hermosabch.org>; suja@hermosabch.org
Subject: 6 (a) MUNICIPAL MATTERS GREENBELT INFILTRATION PROJECT NEXT STEPS

PLEASE PLACE MY COMENTS ON THE ADGENDA FOR ITEM 6(a) GREENBELT
INFILTRATION PROJECT NEXT STEPS AND THE ATTACHED PHOTOS

Staff has placed Report 19-0191 on tonights Agenda (03/26,2019) with three recommendations for the Council to consider. Proceed with the existing Greenbelt location, proceed with a location at South Park or initiate a dissolution or an amendment of the MOU with the Beach Cities EWMP partners.

Staff has now proposed to place the infiltration galleries at South Park as an alternative to the Greenbelt location. Staff has indicated that there are fewer impacts to the surrounding areas at the South Park location.

South Park will be a construction site for one year or more and there will be real impacts to the surrounding areas.

Some of the impact will be the following:

*

Vibration for large earth moving equipment ,earth compacting machines and large trucks delivering materials and general construction noise (sometime very loud)

*

The site will require shoring. CAL/OSHA will require a permit (DOSH permit) for excavations that are 5 feet and deeper. Tetra Tech photo of Bolivar Park show a similar gallery with shoring.

*Excavating at this site or the greenbelt site will require a minimum of 190 10 wheelers (dump trucks) per acre foot which would be 2650 dump trucks for a 15-foot excavation depth. There is no mention of a truck route for the

dump trucks or other trucks delivering items such as the large concrete galleries

*

The site (South Park) needs to have further testing for geotechnical and liquefaction susceptibility . Plan hermosa (General Plan) on page 189 mentions the Geologic and Seismic Hazards of both South Park and the Greenbelt location at 2nd Street and Herondo Street

*

The diversion structures will still be constructed at Herondo Street with a depth of 20 feet or more . This will require shoring per CAL/OSHA

*

The contractor will need a staging area for equipment and construction materials . This might be place in the parking lot.

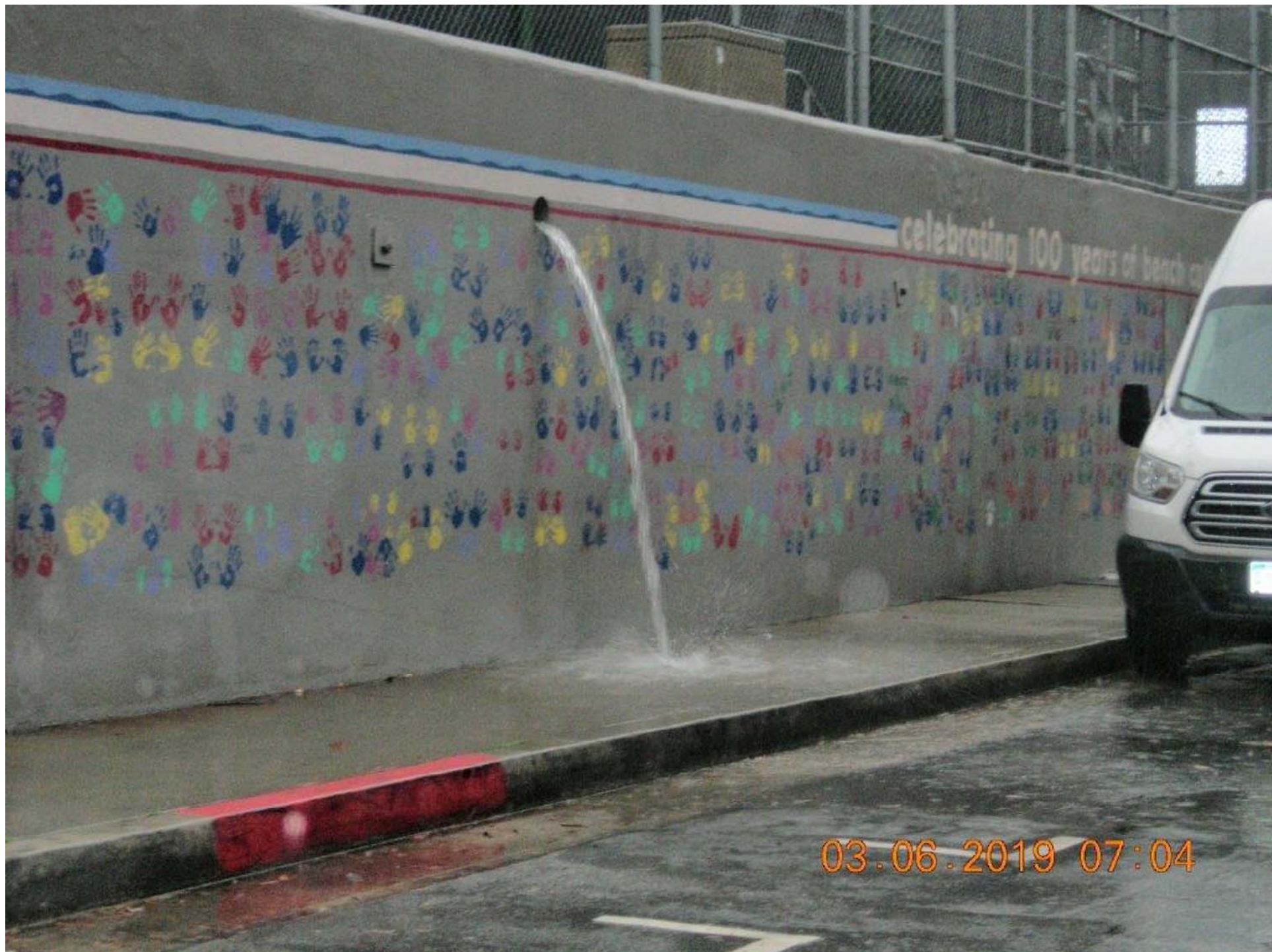
The Council should look at the 1.6 miles of the Greenbelt to place a Low Flow Infiltration System such as the Manhattan Beach system located at First Street and Ardmore/Valley Drive. This Manhattan facility collects runoff from 55.2 Tributary acres.

The area between 21st Street to Pier Ave and PCH to Ardmore is a Tributary of 34 acres and between Pier Ave. to 8th Street and PCH to Ardmore is a Tributary of 27 acres. Two Low Flow Infiltration Systems could be installed in these locations the size of Manhattans This would eliminate the flooding of the south bound lane of Ardmore causing cars to drive into the north bound lane ,the water falls at the Community center sidewalk and wood chips flowing into the ocean. (SEE PHOTOS) Please look at the safety of the Hermosa residents driving along Ardmore during the wet seasons and with the Low Flow Infiltration installation the runoff will not reach the ocean.

Everyone in Hermosa is for clean oceans but the two proposed locations for the infiltration projects contain Geologic and Seismic Hazards.

Peter Tucker





03.06.2019 07:04





03.06.2019 07:25