

Submitted To

CITY OF HERMOSA BEACH  
Office of the City Clerk, 2nd Floor  
1315 Valley Drive  
Hermosa Beach, CA 90254  
Attn: Fabio M. Macias, Project Manager

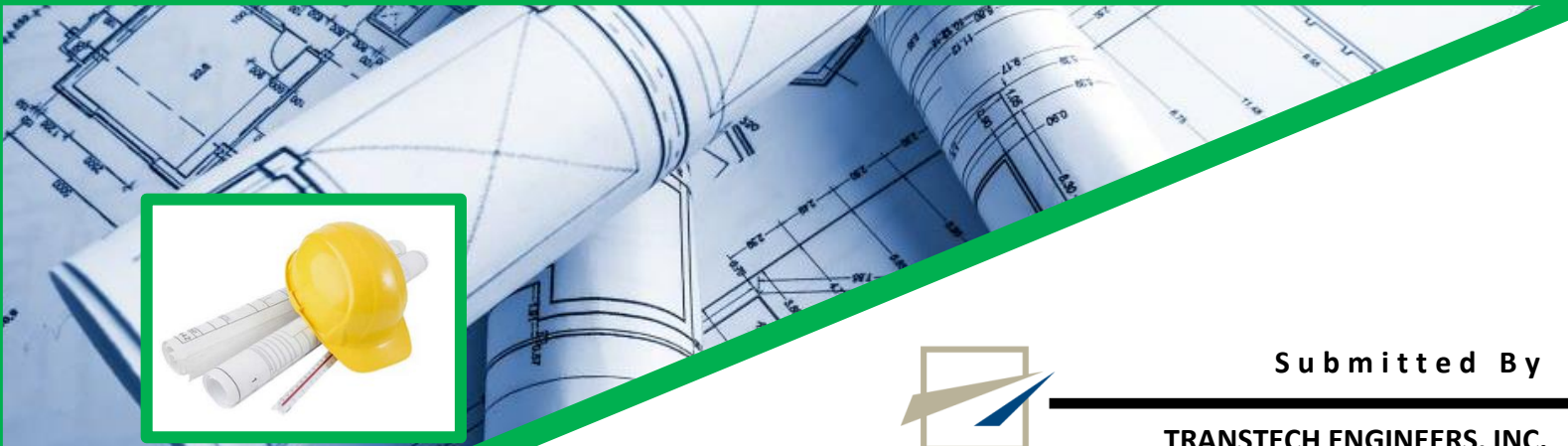
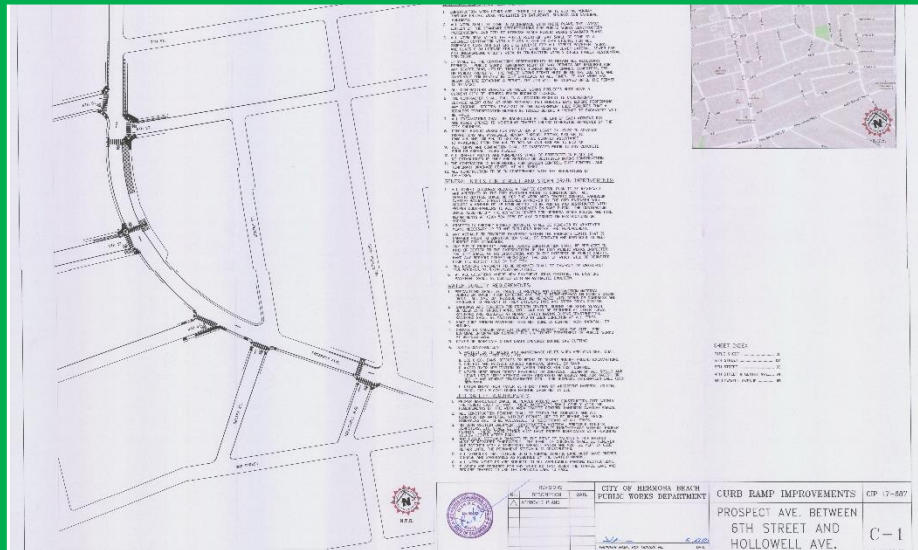


Attachment 3

Due Date: June 25, 2018, 11 am  
Submittal includes: 3 hard copies, 1 pdf

# TECHNICAL PROPOSAL REQUEST FOR PROPOSALS TO PROVIDE CONSTRUCTION MANAGEMENT & INSPECTION SERVICES (RFP 18-09, CIP #17-687; CDBG NO. 601869-17)

*As required, Fee Proposal is submitted in a separate envelope*



Submitted By



**TRANSTECH**  
13367 Benson Avenue  
Chino CA 91710  
www.transtech.org  
855.595.2495 (toll-free)

**TRANSTECH ENGINEERS, INC.**  
**Contact Person for this Proposal:**

Ali Cayir, PE, Principal

[ali.cayir@transtech.org](mailto:ali.cayir@transtech.org)

C: 714-883-8677 / O: 909-595-8599

June 25, 2018

**CITY OF HERMOSA BEACH**  
**Office of the City Clerk, 2nd Floor**  
1315 Valley Drive  
Hermosa Beach, CA 90254  
Attn: Fabio M. Macias, Project Manager



**Subject: TECHNICAL PROPOSAL**  
**REQUEST FOR PROPOSALS TO PROVIDE**  
**CONSTRUCTION MANAGEMENT & INSPECTION SERVICES**  
**(RFP 18-09, CIP #17-687; CDBG NO. 601869-17)**  
*As required, Fee Proposal is submitted in a separate envelope*

Dear Mr. Macias:

Transtech is pleased to submit this Technical Proposal to the City for the subject services.

Established in 1989, Transtech Engineers, Inc. (a California Corporation) is a multi-disciplinary engineering consulting firm which provides full contract municipal engineering services to approximately 25 local agencies.

**Our service capabilities include:**

- Municipal Engineering Services, City Engineer, City Traffic Engineer, Development Review, Public Works Engineering, Plan Check, Inspection
- Building and Safety Services, Building Inspection, Plan Check, Building Evaluations, City Building Official, Code Enforcement
- Staff Augmentation
- CIP Program Management
- Construction Management and Inspection
- Federally Funded Project Management
- Grant Writing
- Labor Compliance
- CDBG Project Management
- Civil Engineering, Freeways and Interchanges, Local Streets and Roads, Sewerage, Water and Storm Drain, Pavement Management System, Grading Studies
- Planning Support
- Traffic and Transportation Planning and Engineering
- Water Resources Engineering
- Surveying, Mapping, ALTA, Right-of-way Engineering
- Emergency and Disaster Response, Support and Recovery Services

**Following is a partial listing of Transtech's recent experience related to similar Projects:**

- City of Temple City, FY 16/17 Annual Street Rehabilitation Project, Temple City BI HSIP and Street Rehab Project (Federally Funded), El Monte Ave HSIP Projects. Cost: \$3m
- City of Commerce, FY 16/17 Annual Street Rehabilitation Project. Cost: \$3m
- City of Temple City, FY 15/16 Annual Street Rehabilitation Project. Cost: \$1.5m
- City of Commerce, FY 15/16 Annual City-wide Street Rehabilitation Project: Cost \$3.7m.
- City of Cudahy, FY 16/17 Annual St Rehab Project, ATP Project (Federally Funded), Cost \$1.0m.
- City of San Bernardino, FY 15/16 Annual Street Rehab and ADA sidewalk improvements Project: Cost \$3.5m.
- City of Cudahy, FY 15/16 Annual Residential Streets Rehab and Atlantic BI Crack Seal Project: Cost



June 25, 2018

**CITY OF HERMOSA BEACH**

**Office of the City Clerk, 2nd Floor**

**Attn: Fabio M. Macias, Project Manager**

**Subject: TECHNICAL PROPOSAL TO PROVIDE CONSTRUCTION MANAGEMENT & INSPECTION SERVICES  
(RFP 18-09, CIP #17-687; CDBG NO. 601869-17)  
As required, Fee Proposal is submitted in a separate envelope**

Page 2

\$0.7m.

- City of Monterey Park, Parking Lot 2, Garvey Ranch Conservation Garden, Langley Sr. Center ADA Rehab Projects. Cost \$1.0m.
- City of Alhambra, FY 16/17 Annual Residential Streets Rehab and Concrete Allery Reconstruction, Second Street SR2S and Pavement Rehab and Valley/6<sup>th</sup> HAWK Signal Project. Cost: \$2.8m.

We also have extensive experience in managing several large-scale projects (following is a partial listing):

- City of Commerce, Washington Bl Widening, Reconstruction, Beautification, Fed Funded, \$38m.
- City of Temple City, Rosemead Bl Bikeway, Reconstruction, Beautification, Fed Funded, \$20m.
- City of Pomona, Rte 71/Mission Bl Grade Separation, Fed Funded, \$40m.
- City of Moreno Valley, Cactus/Nason Street Improvements, 135' Span Bridge, SLPP Grant, \$21m.

One of the unique qualifications of Transtech and its staff is that we work as Contract City Engineers for several agencies. We have extensive experience working with Public Agencies in similar assignments, including experience in dealing with Public Agency Staff, Council, and Commissions. We are accustomed to working with governmental agencies, and have a good understanding of public agency issues, procedures, and policies. We have extensive experience in managing contracts as City staff extension with turn-key service approach.

We believe our team is well qualified to perform the services requested:

- ✓ Successfully providing **similar services to many agencies** for nearly 30 years.
- ✓ Proven track record in **on time** and **within budget** project delivery.
- ✓ **Multi-disciplinary** engineering consulting service capabilities to provide an array of municipal services.
- ✓ Ability to **work collaboratively** with agencies, project applicants, and other stake holders, and **communicate effectively** with diverse audiences and stakeholders at public forums.
- ✓ Efficient and cost effective, where our base cover various support, oversight, admin services and we do **not burden the City with additional/extra costs**.
- ✓ Committed to producing a **high-quality work product and deliver a high level of customer care**.
- ✓ Commitment of **principal level management** and involvement throughout the contract duration.
- ✓ Well experienced **in-house staff readily available** to commence with the services upon City's authorization.

Thank you for the opportunity to submit this proposal. Should you have any questions, or require additional information, please feel free to contact us.

Sincerely,



Ali Cayir, PE, Principal

[ali.cayir@transtech.org](mailto:ali.cayir@transtech.org); O: 909-595-8599; C: 714-883-8677



Our proposal and Table of Contents is formatted per Section IV. CONTENT OF THE PROPOSAL of the RFP.

SECTION	PAGE
<b>A. COMPANY OVERVIEW</b>	<b>A.1 – A.16</b>
TRANSTECH	A.1
DBE SUBCONSULTANT (Avant-Garde, Inc., CDBG Labor Compliance)	A.2
MATERIALS TESTING AND INSPECTION SUBCONSULTANT (Geo-Advantec, Inc.)	A.2
REFERENCES FOR SIMILAR PROJECTS (Per RFP, City is requiring maximum 5 project references)	A.2
RELEVANT PROJECT EXPERIENCE	A.9
<b>B. PROJECT STAFF QUALIFICATIONS</b>	<b>B.1 – B.26</b>
PROJECT ORGANIZATION CHART	B.1
RESUMES	B.1
<b>C. APPROACH AND METHODOLOGY</b>	<b>C.1 – C.6</b>
GENERAL APPROACH	C.1
SCOPE OF WORK	C.5
<b>D. PROJECT SCHEDULE</b>	<b>D.1 – D.3</b>
<b>E. DBE USE</b>	<b>E.1 – E.1</b>
<b>F. CONTRACT</b>	<b>F.1 – F.3</b>







---

## A. COMPANY OVERVIEW

---

## TRANSTECH

### Company Profile:



Transtech Engineers, Inc. established in 1989, Transtech (a California Corporation) is a multi-disciplinary engineering consulting firm, which provides engineering services to approximately 25 local agencies in Greater LA Area. Transtech is an ISO 9001 certified firm in Quality Management Systems, this certification is based on a number of quality management principles including a strong customer service focus.

### Transtech's comprehensive service capabilities include:

- Building and Safety Services, Building Inspection, Plan Check, Building Evaluations, City Building Official, Code Enforcement
- Municipal Engineering Services, City Engineer, City Traffic Engineer, Development Review, Public Works Engineering, Plan Check, Inspection
- Staff Augmentation
- CIP Program Management
- Construction Management and Inspection
- Federally Funded Project Management
- Grant Writing
- CDBG Project Management
- Labor Compliance
- Civil Engineering, Freeways and Interchanges, Local Streets and Roads, Sewerage, Water and Storm Drain, Pavement Management System, Grading Studies
- Planning Support
- Traffic and Transportation Planning and Engineering
- Water Resources Engineering
- Surveying, Mapping, ALTA, Right-of-way Engineering
- Emergency and Disaster Response, Support and Recovery Services

### Local Experience:

Our staff members have extensive experience in the local area, as well as working with local and regional agencies, including Caltrans, Metro, Los Angeles County, San Bernardino County, Riverside County, Orange County, and SCAG.



### Licenses and Certificates of the Firm and Staff Members in Diversified Fields:

- ICC Certified Building Official
- ICC Certified Sustainability Professional
- CAsp, California Access Specialist
- ICC Certified Building, Electrical, Mechanical, Plumbing Plans Examiner
- Accessibility Plans Examiner
- CalGreen-California Green Building Plan Examiner
- IAPMO Certified Plumbing, Mechanical Inspector CA Commercial, Res Plumbing Inspector UPC
- CA Residential Mechanical Inspector
- CACEO Certified Code Enforcement Official
- Professional Licensed Engineer (PE, SE, ME, EE)
- Professional Licensed Traffic Engineer (TE)
- Professional Licensed Land Surveyor (PLS)



- ICC Certified Commercial Building, Electrical, Mechanical, Plumbing Inspector
- Accessibility Inspector
- CalGreen-California Green Building Inspector
- Qualified Storm Water Pollution Prevention Plan Developer (QSD); Practitioner (QSP), Industrial Practitioner (QSIP)
- Licensed General Contractor A and B

**Our company and staff members are members or serve on various committees:**

- American Public Works Association (APWA)
- American Society of Civil Engineers (ASCE)
- Construction Management Association of America (CMAA)
- Chair; ICC Sustainability Membership Council
- Chair; ICC LA Basin Chapter Inspection Committee
- Commissioner; ICC Codes & Standards Council
- Commissioner; CALBO Green Committee
- Commissioner; ICC/CALBO CA Exam Committee
- Commissioner; CALBO Outreach/Communications Committee
- ICC Los Angeles Basin Chapter Board of Directors
- ICC Building Officials Membership Governing Council
- ICC Code Development Committee Vice Chair
- ICC Technology/Web Advisory Group
- IAS Accreditation Committee
- ICC LA Chapter Accessibility Committee

**DBE SUBCONSULTANT (Avant-Garde, Inc., CDBG Labor Compliance)**

---

For this project, Transtech Team includes the following DBE Firm:

- AVANT-GARDE (DBE Firm); [www.agi.com.co](http://www.agi.com.co); CDBG Labor Compliance.

**MATERIALS TESTING AND INSPECTION SUBCONSULTANT (Geo-Advantec, Inc.)**

---

For this project, Transtech Team includes the following Firm for Materials Testing and Inspection:

- GEO-ADVANTEC, INC.: Sub Consultant (Materials Testing and Inspection); [www.geoadvantec.com](http://www.geoadvantec.com)

**REFERENCES FOR SIMILAR PROJECTS (Per RFP, City is requiring maximum 5 project references)**

---

**REFERENCE 1:**

**Similar Project:**

- FY 15/16, 16/17 St Rehab Project; ATP Signal and Pedestrian Safety Project (Federally Funded); Atlantic Bl Crack Seal Project. (Total Cost \$2.5m)

**Reference Contact:**

- City of Cudahy; Jose Pulido, City Manager; T: 323-282-5582; E: [jpulido@cityofcudahyca.gov](mailto:jpulido@cityofcudahyca.gov)

**Services Provided:**

- Construction Management and Construction Inspection
- Building and Safety Plan Check, Engineering, CIP Design, Federally Funded Project Management
- Year started and completed: 2012 – Ongoing Service

**REFERENCE 2:**

**Similar Project:**

- City of Commerce, FY 15/16, 16/17 Annual Street Rehabilitation Project. (Total Cost: \$7m)

**Reference Contact:**



- City of Commerce; Maryam Babaki, PE, PW and Development Services Director; T: 323-722-4805; E: [mbabaki@ci.commerce.ca.us](mailto:mbabaki@ci.commerce.ca.us)

**Services Provided:**

- Construction Management and Construction Inspection
- Contract City Engineering, Traffic Engineering, CIP Design, Federally Funded Project Management, Plan Check
- Year started and completed: 2003 – Ongoing Service

**REFERENCE 3:****Similar Project:**

- FY 15/16, 16/17 Annual Street Rehabilitation, Temple City BI HSIP Traffic Signal and Safety and Street Rehab Project (Federally Funded), El Monte Ave HSIP Projects. (Total Cost \$4.5m)

**Reference Contact:**

- City of Temple City; Michael Forbes, Community Development Director; T: 626-285-2171; E: [mforbes@templecity.us](mailto:mforbes@templecity.us)

**Services Provided:**

- Construction Management and Construction Inspection
- Building Official, Plan Check and Inspection, City Engineering, Traffic Engineering, CIP Design, Federally Funded Proj Management
- Year started and completed: 2012 – Ongoing Service

**REFERENCE 4:****Similar Project:**

- FY 16/17 Annual Residential Streets Rehab and Concrete Allery Reconstruction, Second Street SR2S and Pavement Rehab and Valley/6<sup>th</sup> HAWK Signal Project. (Total Cost: \$2.8m)

**Reference Contact:**

- City of Alhambra; Marc Castagnola, Development Services Director, 626-570-5041; E: [mcastagnola@cityofalhambra.org](mailto:mcastagnola@cityofalhambra.org)

**Services Provided:**

- Construction Management and Construction Inspection
- Building Official, Plan Check and Inspection, City Engineering, Traffic Engineering, CIP Design, Federally Funded Proj Management
- Year started and completed: 1993 – Ongoing Service

**REFERENCE 5:****Similar Project:**

- City of San Bernardino, FY 15/16 Annual Street Rehab and ADA sidewalk improvements Project: Cost \$3.5m

**Reference Contact:**

- City of San Bernardino; Mark Persico, Development Services Director; T: 909-384-5057; E: [Persico\\_Ma@sbcity.org](mailto:Persico_Ma@sbcity.org)

**Services Provided:**

- Construction Management and Construction Inspection
- Contract Engineering, Interim Building Official, City Engineer, CIP Design, Federally Funded Project Management, Building and Safety Plan Check and Inspection
- Year started and completed: 2005 – Ongoing Service

Please see attached reference letters from above listed references.







March 21, 2018

**SUBJECT: Reference Letter for Transtech Engineers, Inc.**

To Whom It May Concern:

I have had the sincere privilege and fortune of working with Transtech Engineers, Inc. at two very different public agencies during my over 17-year City Manager career. As the City Manager at Temple City (i.e., an affluent and predominantly Asian community) and now as the City Manager at Cudahy (i.e., a lower income and predominately Latino community), Transtech has provided and still provides) a variety of contract services including: City Engineering; City Traffic Engineering; Public Works Engineering, Management Plan Check / Inspection; Development Engineering; Capital Improvement Projects Program & Grant Management; and "As-needed Professional Services" inclusive of planning, design, project management, construction management and inspection.

Moreover, Transtech assisted me at both cities to secure millions of dollars in highly competitive grant funds while also managing a number of federally funded projects, from initial grant funding applications through the completion of project construction. Over the years, I have unequivocally found Transtech's work and conduct to be extremely ethical, professional, timely, and a tremendous value for their client cities through their excellent project value engineering efforts. Transtech's staff has always been extremely responsive to the City's needs while doing so in a professional and courteous manner.

In my cumulative experience in public service working for different public agencies, I highly recommend Transtech's services because they always deliver more than you expect on time and on budget. They have always provided the highest quality staff, work product, and services, in an efficient and cost-effective manner, while having the best interest of the City in mind.

Should you have any questions, please contact me at your earliest convenience in the office at (323) 773-5143 ext. 226, via cell phone at (323) 868-2126 or email at [jpulido@cityofcudahyca.gov](mailto:jpulido@cityofcudahyca.gov).

Sincerely,

Jose E. Pulido  
City Manager





# City of Commerce

Public Works & Development Services Department

February 27, 2018

**SUBJECT: Reference Letter - Services provided to the City of Commerce by Transtech Engineers, Inc.**

To Whom It May Concern:

The City of Commerce is exceptionally satisfied with Transtech's services. They have always provided the highest quality staff, work product, and services, in an efficient and cost-effective manner, while having the best interest of the City in mind. They are very responsive, and immediately address any and all requests the City may have. They are problem solvers and on-time for all of their assignments.

Transtech Engineers, Inc. has been providing various contract engineering services to the City of Commerce for the past 17 years. These services include support for City Engineering, Construction Management, Design, CIP Project Management, Staff Augmentation for Public Works Engineering/Management, and Traffic Engineering. Transtech also provides As-needed Professional Services, inclusive of planning, various building and safety related support including permitting, plan review, and inspection, as well as any other services the City may need.

Transtech's staff has always been extremely responsive to the City's needs, and most recently served as the turn key construction managers for one of the region's largest infrastructure projects, the Washington Boulevard Widening and Reconstruction Project, which had a total budget of \$38M. This project also was recently recognized as Project of the Year by the American Public Works Association (APWA) in the category of Transportation.

On behalf of the City, I highly recommend Transtech's services. If you have any further questions, you can contact me directly at 323-722-4805 or at [mbabaki@ci.commerce.ca.us](mailto:mbabaki@ci.commerce.ca.us).

Sincerely,

**Maryam Babaki, PE**

Director of Public Works & Development Services Department  
City of Commerce

2535 Commerce Way • Commerce, California 90040 • (323) 722-4805 • FAX (323) 726-6231 • [www.ci.commerce.ca.us](http://www.ci.commerce.ca.us)





## PLANNING DIVISION

CITY OF TEMPLE CITY 9701 LAS TUNAS DR. TEMPLE CITY, CA 91780 (626) 285-2171

May 17, 2016

Subject: **Reference Letter**

**Services provided to the City of Temple City by Transtech Engineers, Inc.**

To whom it may concern:

Transtech Engineers, Inc. has been providing contract Building & Safety and Engineering services to the City of Temple City since 2012. Services provided by Transtech include: Building Official, Plan Review, Building Inspector, City Engineering, Traffic Engineering, Public Works Project Management, Development Engineering, capital Improvement Projects Program and Grant Management, Construction Management and as-needed professional services including, planning, design, project management, construction management, and inspection. Transtech serves as City's Building Official and City Engineers. Transtech has assisted the City in obtaining funding and managing a number of federally funded projects, from initial funding applications through construction completion.

Transtech provides high quality services in an efficient and cost effective manner. Transtech is highly responsive to any issues or problems that arise and provides excellent customer service internally to City staff and externally to the public. Their work is consistently completed in a timely and professional manner.

Based on our professional experience with Transtech, we highly recommend their services. If you have any questions, please contact me at (626) 285- 2171 or [mforbes@templecity.us](mailto:mforbes@templecity.us)

Sincerely,

Michael D. Forbes  
Community Development Director





*Gateway  
to the  
San Gabriel Valley*

*111  
South First Street  
Alhambra  
California  
91801*

**City of Alhambra**  
Development Services Department

February 13, 2018

I am pleased to write this letter of recommendation for Transtech Engineers, Inc.

Transtech Engineers, Inc. has been providing full Contract Building and Safety Services as well as City Engineering Services in the capacity of Building Official, Permit Technician, Building Inspector, Building Plan Check, City Engineering, City Traffic Engineering, Public Works Plan Checks, CIP Management, Construction Management, Grant Management, , and as-needed Professional Services inclusive of planning, design, project management, and construction management to the City of Alhambra for nearly 25 years.

Based on mine and other staff's professional experience with Transtech and their staff, the City of Alhambra is extremely satisfied with their services over the years. They continue to provide the highest quality work, have always been professional, efficient, cost effective, while having the best interest of the City in their mind.

Their commitment to quality and quick responsiveness for any needs the City may have sets them apart from others. I can confidently recommend them for their services.

Please feel free to contact me if you have any questions.

Best Regards,

Marc Castagnola  
Development Services Director  
City of Alhambra  
(626)570-5041 / [mcastagnola@cityofalhabra.org](mailto:mcastagnola@cityofalhabra.org)







## City of San Bernardino

Community Development Department | Mark Persico, AICP, Director

March 13, 2018

Subject: Transtech Engineers, Inc.  
Reference Letter for Services Provided to the City of San Bernardino

To Whom It May Concern:

I'm writing this letter of reference for Transtech Engineers, Inc., a firm that I had the pleasure to work with in two different agencies. Transtech has always provided the highest quality work; their staff is professional and courteous; their work is efficient and cost effective; and they always have the best interest of the City in their mind. They have extensive public works, engineering, and building and safety knowledge and experience.

Transtech staff has served as the City Engineer and Chief Building Official in the City of Temple City when I was the Community Development Director. Transtech staff has also served and is currently providing similar services to the City of San Bernardino where I currently serve as Community Development Director.

In both agencies, Transtech staff has been professional, responsive and flexible in meeting all of my Department's and City's needs. The firm has proven themselves to be a great asset to the team and a reliable partner in getting projects completed. In Temple City, Transtech Engineers served as the resident engineer on the award winning \$21 million Rosemead Boulevard project. Their skills and professionalism were vital in delivering the project on time and on budget.

I would highly recommend Transtech based upon my current and past experiences with the firm. If you have any further questions, please feel free to contact me at [persico\\_ma@sbcity.org](mailto:persico_ma@sbcity.org), or at 909-384-5057.

Sincerely,

Mark H. Persico, AICP  
Community Development Director

290 North D St, San Bernardino, CA 92401 | P: 909-384-5357 | F: 909-384-5155 | [www.SBCity.org](http://www.SBCity.org)



## RELEVANT PROJECT EXPERIENCE

Following are various additional similar projects where Transtech provided Construction Management and Inspection Services (Partial List).



### **26<sup>th</sup> Street Rehab and Metrolink Station (\$1M):**

This project was Federally Funded in the City of Commerce and included rehabilitation of 26<sup>th</sup> Street, and Metrolink Station parking lot rehab, station platform improvements, landscape and lighting. Transtech prepared the PS&E, as well as provided construction management, resident engineer, inspection, labor compliance and office engineer services.



### **ATP Citywide Crosswalk and Pedestrian Safety Improvement Project (\$1.2M):**

Located in the City of Cudahy, this project included safe routes to school pedestrian safety improvements near schools and pedestrian activity centers. Transtech prepared the PS&E, as well as provided construction management, resident engineer, inspection, labor compliance and office engineer services.



**Eastern Avenue Rehab Project (\$1.5M):** Located in the City of Commerce, this project was funded thru City's Measure AA Funds. The project involved Full Depth Reclaimed Pavement Rehabilitation. Transtech prepared the PS&E, as well as provided construction management, resident engineer, inspection, labor compliance and office engineer services.



**AWARD:** This project was recognized as one of the project of the year awards as part of the 2017 Outstanding Local Streets and Roads Project Award Program in the Category of Roads for Efficient & Sustainable Road Maintenance, Construction & Reconstruction Projects.







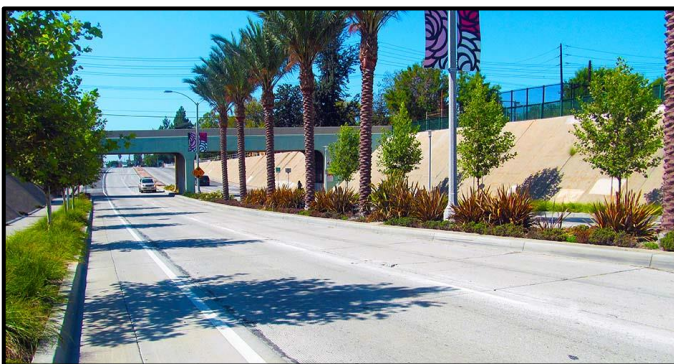
**El Monte, Temple City Blvd, and Various Citywide Locations HSIP Projects (\$1.8M):** Located in the City of Temple City, this project was a Federally Funded through Highway Safety Improvement Project (HSIP) program. It included asphalt roadway resurfacing, markings & striping, traffic safety improvements such as updated traffic signal heads and speed radar feedback signs, and updated street signage. Transtech prepared the PS&E, as well as provided construction management, resident engineer, inspection, labor compliance and office engineer services.



**Middleton Street Elementary School Safe Routes to School Improvements Project (\$500K):** Located in the City of Huntington Park, this project was part of the Safe Route to School program and included pedestrian safety improvements, bulb outs, ADA compliant PCC curb ramps, sidewalk improvements, updated signage, striping and markings. Transtech prepared the PS&E, as well as provided construction management, resident engineer, inspection, labor compliance and office engineer services.



**Rte 71/Mission Bl Grade Separation Project (\$40M):** This project was a Federally Funded project located the City of Pomona and included construction of a bridge/grade separation. Transtech provided construction management, resident engineer, inspection, labor compliance and office engineer services. Caltrans was the oversight/jurisdictional Agency.



**Rosemead Boulevard Improvements Project (\$20M):** Located in the City of Temple City, this was a Federally Funded project. Transtech provided construction management, resident engineer, inspection, labor compliance and office engineer services. The project included protected bike lanes, widening and reconstruction of 2 miles of roadway (including approx. 6,000 tons rubberized AC overlay).





**Washington Boulevard Widening and Reconstruction Project (\$38M):** Located in the City of Commerce, this was a Federally Funded project Transtech provided construction management, resident engineer, inspection, labor compliance and office engineer services. The project included the widening and reconstruction of 2.7 miles of Roadway (including approx. 3,500 tons rubberized AC overlay).



**AWARD:** This project was recognized as one of the project of the years as part of the 2017 American Public Works Association (APWA) BEST Award, in the category of Transportation Projects.



**Cactus Avenue and Nason Street Improvements and 135' Span Bridge Project (\$21M):** This project was part of the State Local Partnership Program SLPP Grant in the City of Moreno Valley (\$21M). Transtech provided construction management, resident engineer, inspection, and office engineer services.



**AWARD:** This project was recognized with a project achievement award by the Construction Management Association of America (CMAA) for Construction Management Services under the Public Works Category for \$11M-\$50M ranged projects.



**Temple City Citywide Pavement Rehabilitation Project (\$900K):** Located in the City of Temple City, this project included citywide construction of slurry seal to various streets. Transtech prepared the PS&E, as well as provided construction management, resident engineer, inspection, labor compliance and office engineer services.



**Via Duct Boulevard/2nd St Realignment and Metrolink Parking Facility (\$6M):** This project was Federally Funded and located in the City of San Bernardino. Transtech provided construction management, resident engineer, inspection, and office engineer services.







**Slauson Avenue ADA Improvements and Tree Replacement Project (\$1.5M):** Located in the City of Commerce, this project was funded thru City's Measure AA Funds. The project included removal of 149 overgrown Ficus trees that displaced the sidewalk in some areas up to 2 feet high and replaced them with new ADA compliant sidewalk and planted 433 drought tolerant trees in their place. Transtech prepared the PS&E, as well as provided construction management, resident engineer, inspection, labor compliance and office engineer services.



**Parking Lot Improvements Projects (\$550K):** Located in the City of Temple City, this project included new parking lot signage, asphalt resurfacing, construction of trellis, new lighting, electrical vehicle charging station infrastructure, landscaping, and drainage. Transtech provided design, construction management, and inspection services.



**Bogert Trail Bridge Widening Project (\$5M):** Located in the City of Palm Springs, this project was a Federally Funded project. Transtech provided construction management, resident engineer, inspection, labor compliance and office engineer services. The project involved bridge widening, retrofit, and beautification elements.

#### **Transtech also has extensive experience in Large/Complex Building Projects**



**City of Alhambra, Civic Center Library Project (\$25M):** Transtech provided plan check, inspection, construction management and owner representative services, the project included construction of a 45,000 SF Library with an underground parking garage.





**Renaissance Plaza (\$15M):** This project was located in the City of Alhambra and included a parking structure, 10 plex movie theater, retail, and plaza. Transtech served as the City's Building Official, Plan Checker and Inspector for this project including construction manager of the parking structure, public plaza, and other improvements.



**Rosewood Community Center (\$25M):** Transtech was retained by the City of Commerce to take over the management of this multimillion dollar facility which was 2 years behind schedule. Within 5 months, Transtech brought the construction to substantial completion level allowing the City to start the move-in process, and 2 months after, the facility was opened for public use.



**Garfield Avenue Parking Structure:** This project included a 5-story level, 600 space parking structure as part of the Alhambra Redevelopment Agency and Downtown Redevelopment. Transtech provided plan check, inspection, construction management and owner representative services.



**First Street Parking Structure (\$2.5M):** This project is in the City of Alhambra and included a 4-story level, 276 space parking structure. Transtech provided plan check, inspection, construction management and owner representative service.



**City of Commerce City Hall Addition (\$8M):** This project included construction of 20,000 SF addition to existing the City Hall. Transtech provided construction management and inspection services.







**820 Mission Development LLC (Project Value: \$10M):** Located at 820 Mission St. Transtech provided full plan review as well as inspection services of for this development which includes construction of new office building with one residential unit above, new 15 unit townhome cluster with office fronting Mission Street with one-level subterranean parking, convert existing 3-story industrial building into 9 residential units, construct 13 townhome units. This project is located in South Pasadena.



**Temple City Camellia Square (Project Value: \$15M):** Transtech provided full plan review as well as inspection services, the project included a shopping center with an underground garage and 4 total buildings as follows: a one-story 6,600 SF building; a two-story 25,700 SF building, a two-story 4,500 SF building; and, a two-story 43,400 SF building.



**Linden Walk Residential Development (Project Value: \$18.5M):** Transtech provided full plan review as well as inspection services for this development which included 74 Single Family Dwellings. This project is located in Temple City.



**Blossom Walk Residential Development (Project Value: \$5.7M):** Transtech provided full plan review as well as inspection services of for this development which includes 24-unit condominiums and 4 single family homes. This project is located in Temple City.



**The Terraces (Mixed-Use Development (Project Value: \$19M):** Located at 5935-5953 Temple City Blvd in Temple City. Transtech is currently providing full plan review for the 4 Story Mixed-Use Development which includes a one level basement garage, 61 condominium units as well as ground level and basement parking and 7,250 SF of commercial retail space/restaurant.





**The Alhambra (Project Value: \$57.8M):** Located at 88 S Garfield Avenue, 2 S Garfield Avenue, 100 & 150 E Main St. Transtech provided full plan review as well as inspection services of for this development which includes 260 apartment units, 4-story parking garage, 72,000 sq ft 2-story retail building, 16,730 sq ft 1-story retail building, and 23,000 sq ft 1-story retail building. This project is located in Alhambra.



**Midwick Collection (Project Value: \$13M):** Located at 2400 S Fremont Avenue. Transtech provided full plan review as well as inspection services of for this development which includes 36 single family dwellings and 28 townhomes. This project is located in Alhambra.



**Casita de Zen (Project Value: \$21M):** Located at 28 N 3<sup>rd</sup> St (condo) and 235 W Main St (retail). Transtech provided full plan review as well as inspection services of for this development which includes mixed use project with 92 condos on top, and retail on bottom. This project is located in Alhambra.



**Pacific Plaza (Project Value: \$30.3M):** Located at 11 S 3<sup>rd</sup> St (condo) and 300 W Main St (retail). Transtech provided full plan review as well as inspection services of for this development which includes 120 condo units and retail space below. This project is located in Alhambra.



**Alta Med Medical Group (Project Value: \$4M):** Located at 1900 E Slauson Ave. Transtech provided full plan review as well as inspection services of for this development which includes a new mixed-use building of office space and an adult day care with new on grade parking. This project is located in Huntington Park.

Transtech also provided Map Check Services including review of Tentative Parcel Map and Final Parcel Map for this project.







**Main Street Collection (Project Value: \$23M):** Located at 410 W Main Street. Transtech provided full plan review as well as inspection services of for this development which includes 4-story mixed-use project with 8,200 s ft retail space, 52 condos, 9 live/work units, 19 townhomes, and 6 shopkeeper units. This project is located in Alhambra.



**DaVita Alhambra Dialysis Center (Project Value: \$2M):** Located at 1237 E Main St. Transtech provided full plan review as well as inspection services of for this development which includes 1-story 14,125 sq ft medical office. This project is located in Alhambra.

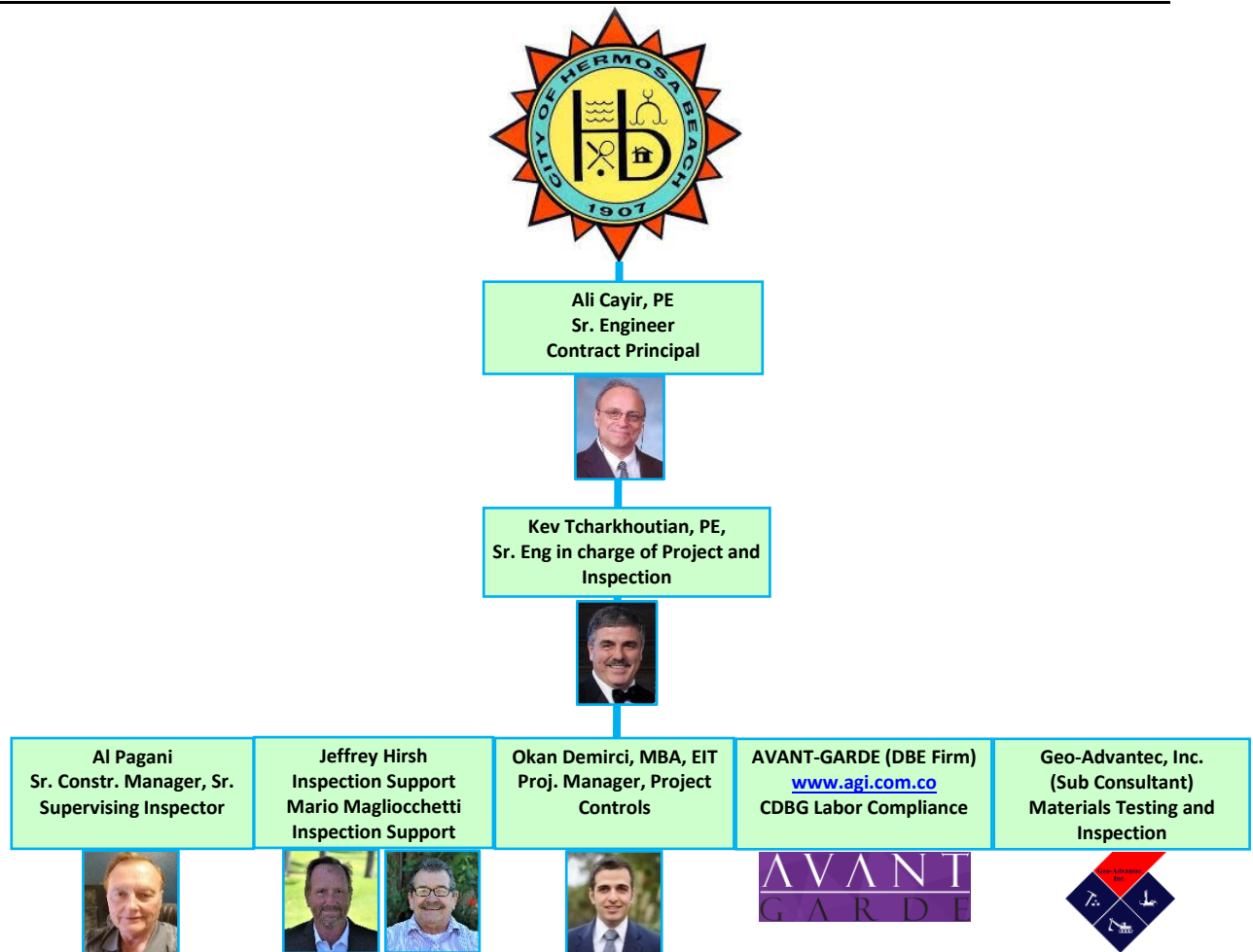




## **B. PROJECT STAFF QUALIFICATIONS**

---

## PROJECT ORGANIZATION CHART



## RESUMES

Resumes are provided in the following pages.



**ALI CAYIR, PE, Sr. Engineer, Contract Principal**

Mr. Cayir has over 30 years of experience in engineering. He has participated on numerous multi-disciplinary teams dealing with the planning and development of civil and traffic engineering, urban and rural development, and public works projects. He served as Principal Project Manager for the design, construction and management of a variety of projects, including:

- Public Works and Infrastructure Improvements
- Educational and University Campuses
- Institutional
- Commercial and Retail
- Transportation and Parking Facilities
- Residential and Master Community Development

**EDUCATION**

- BS Engineering
- MBA
- Project/Construction Management, UC Irvine

**REGISTRATION**

- Registered Civil Engineer
- Licensed Gen Contractor A
- Licensed Gen Contractor B

**HIGHLIGHTS**

- 30 years of experience in City Engineering.
- Served as contract City Engineer and City Traffic Engineer for many Cities.
- City of Alhambra-Contract City Engineer/City Traffic Engineer.
- City of Hanford-Former City Traffic Engineer.
- City of La Habra Heights-Former City and Traffic Engineer
- City of Pomona-Former Interim City Engineer.
- City of Commerce-Assistant Public Services/City PW Engineer.
- Extensive experience in grant programs. Secured over \$20m in funding for during last 2 cycles of MTA Call for Projects Applications.
- Extensive experience in working with Caltrans,

Mr. Cayir served as contract City Engineer, Traffic Engineer and Interim Public Works Director for many municipalities in Southern California. He has a broad knowledge of municipal government operations, including preparation and presentation of staff reports/resolutions to city councils, committees and interaction with public, various city departments, city council and other governmental agencies.

***Municipal Engineering Assignments (past and present)***

- City of Alhambra-Contract City Engineer/City Traffic Engineer
- City of Temple City-Contract City Engineer/City Traffic Engineer
- City of Commerce-Interim City Engineer/City Traffic Engineer/PW Director
- City of Hanford-City Traffic Engineer
- City of La Habra Heights-City Engineer/City Traffic Engineer
- City of Pomona-Interim City Engineer
- City of Commerce, Interim W Director/City Engineer/Traffic Engineer
- City of Bellflower, Deputy City Engineer
- City of Cudahy, CIP Manager
- City of San Bernardino, CIP Manager
- City of Huntington Park, City Engineer

***Construction Management Experience***

Mr. Cayir has served as CM, PM, RE for numerous construction projects. He has extensive experience in Federally Funded Projects. Mr. Cayir also served as contract City Engineer for many municipalities. Some of the significant projects where Mr. Cayir served as CM/PM/RE/Project Principal include:

- Washington Boulevard Widening and Reconstruction Project (Federally Funded), City of Commerce (\$30m). Transtech provided CM/Resident Engineer, Inspector, Office Engineer Services. The project includes widening and reconstruction of 2.7 miles of Roadway (including approx. 3,500 tons rubberized AC overlay). The project is federally funded and being managed in compliance with Caltrans Local Assistance Procedures Manual.
- Rosemead Boulevard Improvements Project, City of Tempe City (Federally Funded) (\$20m). Transtech provided CM/Resident Engineer, Inspector, Office Engineer Services. The project included widening and reconstruction of 2 miles of roadway (including approx. 6,000 tons rubberized AC overlay). The project was federally funded and managed in compliance with Caltrans Local Assistance Procedures Manual.
- Cactus Avenue and Nason Street Improvements and 135' Span Bridge Project, City of Moreno Valley (\$21m). Transtech provided CM/Resident Engineer,



County of Los Angeles and other regional agencies and Utility Companies.

- Extensive experience in NPDES requirements.
- Extensive experience in the management and administration of federally and state funded projects in compliance with Caltrans Local Assistance Procedures Manual (LAPM).
- Served as Resident Engineer on several Federally Funded Projects.

Inspector, Office Engineer Services. The funding included State Local Partnership Program (SLPP) grant and was inspected and managed in compliance with Caltrans Local Assistance Procedures Manual.

- Rte 71/Mission Bl Grade Separation Project (Federally Funded) City of Pomona (\$40m). Transtech provided CM/Resident Engineer, Inspector, Office Engineer Services. Project was inspected and managed in compliance with Caltrans Local Assistance Procedures Manual. Caltrans was the oversight/jurisdictional Agency.
- Bogert Trail Bridge Widening Project (Federally Funded), City of Palm Springs (\$5m). Transtech provided CM/Resident Engineer, Inspector, Office Engineer Services. The project is federally funded and being managed in compliance with Caltrans Local Assistance Procedures Manual.
- Eastern Avenue Street Rehab Project, City of Commerce (\$1.5m). Transtech provided CM/Resident Engineer, Inspector, Office Engineer Services. Funded by Measure AA Funds. Project is being inspected and managed in compliance with Caltrans Local Assistance Procedures Manual. Project involved Full Depth Reclaimed Pavement Rehabilitation.
- 2016 Street Rehab Project, City of Commerce (\$4m). Transtech provided Design and CM, Inspection Services.
- SR2S, BTA and Pavement Rehabilitation Projects (State Funded), City of Temple City (\$2m). Transtech provided CM/Resident Engineer, Inspector, Office Engineer Services. Project was inspected and managed in compliance with Caltrans Local Assistance Procedures Manual. Project involved pavement rehabilitation (rubberized AC overlay), curb and gutter, sidewalk, traffic signals, utilities, and other misc. improvements.
- 710 Freeway Interim Improvements and Fremont Widening Project (Federally Funded), City of Alhambra (\$15m). Transtech provided CM/Resident Engineer, Inspector, Office Engineer Services. Project was inspected and managed in compliance with Caltrans Local Assistance Procedures Manual. Project also involved coordination with Caltrans for work at the 710 Freeway ramps under Caltrans Encroachment Permit.
- Via Duct Boulevard/2<sup>nd</sup> St Realignment and Metrolink Parking Facility, City of San Bernardino (\$6m). Provided CM/Resident Engineer, Inspector, Office Engineer Services. Project was inspected and managed in compliance with Caltrans Local Assistance Procedures Manual.
- New Avenue, from North to South City Limit Rehabilitation and ADA Improvements Project (Federally Funded), City of Alhambra (\$2m). Provided CM/Resident Engineer, Inspector, Office Engineer Services. Project was inspected and managed in compliance with Caltrans Local Assistance Procedures Manual.
- Garfield Rehabilitation and ADA Improvements Project (Federally Funded), Alhambra (\$2m). Provided CM/Resident Engineer, Inspector, Office Engineer Services. Project was inspected and managed in compliance with Caltrans Local Assistance Procedures Manual.
- Main Street Rehabilitation, from West to East City Limit Project, City of Alhambra (\$3m). Provided CM/Resident Engineer, Inspector, Office Engineer Services. Project was inspected and managed in compliance with Caltrans Local Assistance Procedures Manual.
- CSUSB (Cal State SB University) San Bernardino Main Access Road: Prepared PS&E and provided construction administration for the project. Cost \$5m.
- City of Commerce, Rosewood Community Center. Transtech was retained by the



City to take over the management of this multimillion dollar facility which was 2 years behind schedule. Within 5 months, Transtech brought the construction to substantial completion level allowing the City to start the move-in process, and 2 months after, the facility was opened to public use. Currently, Transtech is assisting the City in claims analysis and change order resolution. Construction Cost: \$15m.

- City of Alhambra Downtown Revitalization Program: Involved 11 projects, including Renaissance Plaza (multi-plex theater, public plaza with fountain and unique art features, restaurants, retail, 800 space parking structure), Fremont Plaza (modifications/reconstruction of existing buildings for lease by ToysRUs and Party City, construction of a new 30,000 SF store for PetSmart, and various other retail buildings) and Downtown Revitalization (modification/upgrade of existing buildings for Starbucks, 4 Restaurants and various retail businesses). (Cost: \$80m).
- City of Alhambra 4 parking structures: Transtech served as turn-key project manager, including management of design, construction, building plan check and inspection, federal funds, labor compliance for 4 parking structure projects. Chapel: 4 stories, 300 space structure; First Street: 4 stories, 276 space structure; Garfield: 5 stories, 800 space structure. Cost \$15m; North First Street Mosaic: 5 stories, 320 space structure, Cost \$6m.

#### ***Civil Engineering Experience***

- I-710 Freeway Interim Improvements and Fremont Widening and Reconstruction: Transtech provided Turn-key Services, including Program Management, Construction Management, Design, Surveying, Right-of-Way Engineering, and Environmental. The project included major roadway improvements, removal/demolition of various buildings for additional right-of-way and reconstruction of buildings behind new right-of-way, traffic signals, infrastructure, utilities, pavement, drainage, water, sewer, landscape, street lighting, traffic signal, pavement improvements. Project was funded by Federal Funds, and was managed and inspected in compliance with Caltrans Local Assistance Procedures Manual. (Cost \$15m).
- University Park Development/San Bernardino: The project included 2 miles of new roadway, sewer, water, utility and extensive hill side grading for a master planned residential and commercial development on 130-acre site across from the San Bernardino State University. Cost \$40m.
- City of Torrance, Crenshaw Reconstruction, Skypark Improvements, 190<sup>th</sup>/Crenshaw Widening: Design, construction management services, including inspection, surveying, resident engineer, federal compliance, labor compliance. Project was funded by Federal Funds, and was managed and inspected in compliance with Caltrans Local Assistance Procedures Manual. Cost: \$5 m.
- Valley Boulevard Widening and Reconstruction project which is funded by State and Federal funds and required complete project and environmental report, including Right-of-Way, Relocation, SHPO, NEPA, SEQA, Noise, Parking, Economic, Hazardous Materials technical studies, and processed through Caltrans and FHWA. Construction cost (\$6m).
- Carlsbad to San Diego Rail Trail Project Report, which is funded by State and Federal funds and required complete project and environmental report, including Right-of-Way, Relocation, SHPO, NEPA, SEQA, Noise, Parking, Economic, Hazardous Materials technical studies, and processed through Caltrans and FHWA.
- City of Commerce's Tubeway and Yates Avenue Rehabilitation Project. The





projects involved roadway rehabilitation and reconstruction. Transtech also provided construction management services for the project. Cost: \$300,000.

- City of San El Monte Annual Street Rehabilitation Program, 98, 99, 00, 01. The projects involved roadway rehabilitation and reconstruction, storm drain, water and sewer design on various streets. Cost: \$3,000,000.
- Alameda Corridor Agency East (ACE) Rail Grade Crossing Improvement Project encompassing 6 agencies and 14 locations in Los Angeles County. Work involved roadway realignment and reconstruction, signalization, traffic control, and construction phasing as well as related improvements such as storm drain, water, sewer landscaping, underground utilities, etc. Cost \$5,000,000.
- City of Alhambra Annual Street Rehabilitation Program, 94 through 01. The projects involved roadway rehabilitation and reconstruction, storm drain, water and sewer design on various streets. Transtech also provided construction management services for the project. Project Cost: \$3,000,000. Project Principal for design of City of San Clemente's annual street rehabilitation program. The project involved roadway rehabilitation and reconstruction, storm drain, water and sewer design on various streets. Cost \$1,000,000.
- Reconstruction and rehabilitation of Crenshaw Boulevard and Skypark Avenue (two separate projects) in the City of Torrance. Cost \$3,000,000.
- Valley Boulevard street medians, striping, landscape, and irrigation improvements, Alhambra, Cost \$600,000.

#### ***Traffic Engineering Experience***

- Design and management of a variety of traffic and transportation engineering projects, including traffic signals (more than 1000 locations), traffic signal interconnect system, street lighting, traffic control, signing and striping design; signal timing and coordination studies; traffic signal management studies; traffic safety projects (OTS) including traffic control device inventories and speed surveys; traffic impact and parking studies for more than 100 projects; and feasibility studies for traffic control measures, freeway access, bikeways and street improvements. Mr. Cayir has also served as consultant Traffic Engineer for various agencies in Southern California.
- Project Manager/Engineer for the preparation of ramp metering, count station, traffic signal, highway lighting, sign lighting, construction signing, pavement delineation, communication, and other traffic related plans for several state highways and freeway improvement projects involving Caltrans Districts 7, 8 and 12.
- Project Manager for the preparation of traffic signal modifications and installation, interconnect and radio corrected time base system installation plans and estimates in conjunction with traffic signal synchronization projects for various arterials in Los Angeles County including Garvey Avenue, El Segundo Boulevard, Crenshaw Boulevard, Slauson Avenue, Rosecrans Avenue, Arrow Highway and Huntington Drive/Alosta Avenue/Foothill Boulevard. Signal modification improvements included equipment upgrades, signal phasing upgrades and installation of radio correct time base units (WWV) for signal coordination as well as physical intersection improvements.
- Project Manager for the preparation of signal timing and coordination plans for multiple locations on major arterials in Los Angeles County including Main Street, Garvey Avenue, Crenshaw Boulevard and Slauson Avenue utilizing state-of-the-art computer software.
- Project Traffic Engineer for the proposed Materials Recovery Facility in the City of Industry. This project involved the preparation of a comprehensive area wide traffic impact study to identify the potential impacts associated with



development of a proposed Materials Recovery Facility (MRF) in the City of Industry. The study area encompassed 32 intersections and several freeways such as SR 60 and SR 57. The study also included an evaluation of cumulative impacts associated with 22 planned projects located within the sphere of influence of the study area. In addition, separate analyses were conducted to determine the potential impacts of developing the MRF at alternative sites.



**KEV TCHARKHOUTIAN, PE, Sr. Eng in charge of Project and Inspection**

Mr. Tcharkhoutian has approximately 35 years of experience in public works and city engineering. His experience includes working at various Cities as City Engineer, Interim PW Director, Designer, Plan Checker, CIP Manager, Construction Manager. He is very familiar with the local and regional agencies and policies. He has a broad knowledge of municipal government operations, including preparation and presentation of staff reports/resolutions to city councils, committees and interaction with public, various city departments, city council and other governmental agencies.

**Mr. Tcharkhoutian's experience includes:****City Engineer - City of South El Monte**

- Report to City Manager, prepare staff reports to City Council.
- Manage CIP Projects.
- Review and approve developments, tentative maps, grading plans.

**Plans examiner - City of Baldwin Park**

- Review Tract and parcel maps for condo conversions and PD's

**Plans examiner City of Montebello**

- Review grading plans for conformance with city ordinances and LID

**Interim Public Works Manager- City of Duarte**

- *Work under Community Development Director, at implementing the City's CIP, and review subdivision maps , lot line adjustments and developments for conformance to City's ordinances*

**Plans Examiner City of Vernon, Building and safety**

- Review plans for commercial and industrial projects for compliance with City's ordinances, pertaining to grading plans, development requirements and LID. Phase 1 assessment review

**Plans Examiner, County of Riverside , Building and Safety**

- *Reviewed plans for new developments for compliance with County's ordinances pertaining to grading plans, LID and hydrology studies*

**Project Manager, City of Wildomar**

- Project Manager working with staff on reviewing developments
- Project Manager on the City's Grand Ave Bike path project
- Project Manager for the City's Bundy Canyon Transportation Safety Improvement project

**Project Manager, Construction Management, City of Colton**

- Project Manager/ Construction Management Consultant, for Sewer Lining project under I-10 freeway. Provide construction management services for the installation of CIPP ( cast in place pipe) for 18 inch sewer main under Interstate 10 at 11<sup>th</sup> Street in the City of Colton, San Bernardino County
- Project Manager, Construction Management Consultant , Sewer Force Main construction Project on Agua Mansa Rd . Provided construction management services for the construction of an 8 inch sewer force main 2.5 miles long on Agua Mansa Rd in the City of Colton , San Bernardino County

**Principal Engineer CIP PLANS EXAMINER , City of South Gate**

- Provide staff augmentation to the Public Works Department by providing services in a Principal Engineer capacity. Services included writing RFP's for CIP projects, reviewing PS&E packages for Quality assurance and technical accuracy and constructability.

**Principal Engineer CIP and Land Development-City of Maywood**

- Provide staff augmentation assistance in the areas of CIP and land development
- Design Maywood Ave pedestrian Improvements – Review daily requests by residents

**EDUCATION**

- Bachelor of Science in Civil and Environmental Engineering

**REGISTRATION**

- Registered Civil Engineer

**HIGHLIGHTS**

- Approximately 35 years of experience in public works and city engineering.
- Experience includes working at various Cities as City Engineer, Interim PW Director, Designer, Plan Checker, CIP Manager, Construction Manager.



- Review feasibility of Mayflower Ave street improvements

**Design Engineer, University of Southern California**

- Design and provide construction management for the removal and reconstruction of high voltage electrical vaults and manholes. Designed new vaults and manholes to be installed while system is hot.

**Interim Deputy City Manager for Community Development/Public Works Director/City Engineer, City of El Monte**

- Report to City Manager; Lead the Community Development Department with its seven divisions, prepare staff reports to City Council, design and administer street improvement projects funded by CDBG, SAFETEA LU, and GAS TAX. Manage water, sewer, storm drain, and traffic projects.
- Lead a successful effort at establishing the first Citywide sewer assessment district and enterprise fund
- Approve developments, tentative maps, grading plans, establish assessment districts.
- Manage the engineering and public works maintenance departments, comprised of the street, water, storm drain, sewer, facilities, traffic signal, and graffiti divisions. Manage staff of 50.

**Public Works Director /City Engineer, City of Sierra Madre**

- Report to City Manager, prepare staff reports to City Council, and manage a staff of 25.
- Manage water, sewer, street, storm drain projects.
- Approve developments, tentative maps, grading plans.
- Manage and direct corporate yard operations, in street, sewer, water, street sweeping, storm drains maintenance. Manage safety on the jobsite program.

**City Engineer, City of Baldwin Park**

- Report to City Manager, write staff reports to City Council. Manage a staff of 7.
- Manage street, sewer, storm drain, traffic projects, FAU, GAS TAX, projects.
- Approve developments, tentative maps, grading plans.
- *Direct operations of the corporate yards in street, sewer maintenance*

**Associate Engineer, City of Monrovia**

- Manage street, sewer, water, traffic, storm drain projects
- Review developments, tentative maps, grading plans, assessment districts.

**Assistant Civil Engineer, City of Ontario**

- Design and administration of street, sewer, storm drain, and water projects





**AL PAGANI, Sr. Construction Manager, Sr. Supervising Inspector****EDUCATION**

- BA
- MBA

**CERTIFICATIONS**

- DBIA
- USGBC
- LCI
- ACI
- AISC

**HIGHLIGHTS**

- 35 years of construction experience serving as job superintendent and construction manager.
- Significant experience in the construction of affordable housing and mixed-use projects for non-profit corporations, for-profit developers, and public agencies.
- Constructed over 2,000 housing units including rental apartments, townhomes, condominiums, and transitional housing for families, seniors, and persons with special needs.
- Familiar with various funding sources for these projects, including State and Local Housing and Redevelopment Programs, Low Income Housing Tax Credits, Tax Exempt Bonds

Mr. Pagani's career spans 35 years in a supervisory capacity in Southern California involving all aspects of construction. His career includes all levels of construction including all aspects of residential construction, major project construction such as new school construction, school modernization, medical buildings, higher education facilities, major public projects including such project as historical restoration and adaptive reuse projects, libraries, civic centers and in the private sector from conceptual and planning to completion of construction.

Mr. Pagani has worked for Transtech for 10 years, and served as Sr. Construction Inspector and/or Construction Manager for a number of projects. Some of the significant projects are listed below:

- Washington Boulevard Widening and Reconstruction Project (Federally Funded), City of Commerce (\$30m). Currently providing CM/Resident Engineer, Inspector, Office Engineer Services. The project includes widening and reconstruction of 2.7 miles of Roadway (including approx. 3,500 tons rubberized AC overlay). The project is federally funded and being managed in compliance with Caltrans Local Assistance Procedures Manual.
- Eastern Avenue Street Rehab Project, City of Commerce. Transtech provided CM/Resident Engineer, Inspector, Office Engineer Services. Funded by Measure AA Funds. Project is being inspected and managed in compliance with Caltrans Local Assistance Procedures Manual. Project involved Full Depth Reclaimed Pavement Rehabilitation.
- SR25, BTA and Pavement Rehabilitation Projects (State Funded), City of Temple City. Transtech provided CM/Resident Engineer, Inspector, Office Engineer Services. Project was inspected and managed in compliance with Caltrans Local Assistance Procedures Manual. Project involved pavement rehabilitation (rubberized AC overlay), curb and gutter, sidewalk, traffic signals, utilities, and other misc. improvements.
- 710 Freeway Interim Improvements and Fremont Widening Project (Federally Funded), City of Alhambra. Transtech provided CM/Resident Engineer, Inspector, Office Engineer Services. Project was inspected and managed in compliance with Caltrans Local Assistance Procedures Manual.
- Rosecrans Roadway Widening, 405 Freeway Ramp Widening, (Federally Funded), City of Hawthorne. Transtech provided CM/Resident Engineer, Inspector, Office Engineer Services. Project was inspected and managed in compliance with Caltrans Local Assistance Procedures Manual.
- City Hall Addition, City of Commerce (\$6m). Transtech served as construction manager. The project involved construction of a new 20,000 SF addition to the City Hall and remodel of existing City Hall.
- Construction Manager/Sr. Inspector for San Bernardino, Santa Fe Historic Train Depot Renovation. Services included management of design architect, construction management and inspection. The project involved hazardous material abatement, building renovation, TI improvements, seismic and structural upgrade, new mechanical, electrical HVAC system and site improvements to renovate and reuse a 60,000 SF existing building. Transtech was awarded "Excellence in Transportation" award by Caltrans in 2005 for this project.
- University Park Development Project in the City of San Bernardino. Transtech served as construction manager. The project included grading, roadway, infrastructure, drainage, water, sewer, improvements related to a



and Conventional Financing, Historic Tax Credits, and HUD Section 202 & Section 811 Programs.

- Experience includes both working for public agencies and private sector.

residential and commercial site development. Transtech also provided civil engineering design services for the project.

- Construction Manager for City of Commerce, City Hall Addition and Library Modification. Transtech served as construction manager. The project involved construction of a new 20,000 SF addition to the City Hall and remodel of existing City Hall and modifications to existing Library as necessary.
- Construction Manager for San Bernardino, Santa Fe Historic Train Depot Renovation. Services included management of design architect, construction management and inspection. The project involved hazardous material abatement, building renovation, TI improvements, seismic and structural upgrade, new mechanical, electrical HVAC system and site improvements to renovate and reuse a 60,000 SF existing building. Transtech was awarded "Excellence in Transportation" award by Caltrans in 2005 for this project.
- Construction Manager for University Park Development Project in the City of San Bernardino. The project included grading, roadway, infrastructure, drainage, water, sewer, improvements related to a residential and commercial site development. Transtech also provided civil engineering design services for the project.
- Construction Manager for Valley, I-710 Freeway Interim Improvements and Fremont Widening and Reconstruction in the City of Alhambra. Services included design, construction management, and inspection. The projects included grading, major roadway improvements, including removal/demolition of various buildings for additional right-of-way and reconstruction of buildings behind new right-of-way, infrastructure, utilities, pavement, drainage, water, sewer, landscape, street lighting, traffic signal, pavement improvements. Projects were funded by Federal Funds, and was managed and inspected in compliance with Caltrans Local Assistance Procedures Manual in compliance with Federal Funding Requirements. Coordinated with project participants, including Caltrans, County of Los Angeles, City of Alhambra and MTA.
- Construction Manager for City of Hawthorne-Rosecrans roadway widening, 405 Freeway ramp widening. Transtech served as construction manager, including inspection, surveying, resident engineer, federal compliance, labor compliance.
- Construction Manager for City of Alhambra First Street Parking Structure (4 story 276 spaces). Transtech served as turn-key program manager, including design, construction management, building plan check and inspection.
- Construction Manager for City of Alhambra 45,000 sf Public Library and 2 Level 200 car Underground Parking Garage. The project included extensive grading for 2 levels of underground garage, shoring, 2 story library, 2 levels of underground parking garage, utilities, street paving, sidewalk, and landscape. Transtech served as turn-key program manager, including design, construction management, building plan check and inspection.
- Construction Manager for City of Alhambra Utilities Department Customer Service Building. Transtech served as turn-key program manager, including design, construction management, building plan check and inspection.

Mr. Pagani's experience with other firms include:

As a contractor, Al also has significant experience in the construction of affordable housing and mixed use projects for non-profit corporations, for-



profit developers, and public agencies. He constructed over 2,000 housing units including rental apartments, townhomes, condominiums, and transitional housing for families, seniors, and persons with special needs. He is very familiar with various funding sources for these projects, including State and Local Housing and Redevelopment Programs, Low Income Housing Tax Credits, Tax Exempt Bonds and Conventional Financing, Historic Tax Credits, and HUD Section 202 & Section 811 Programs. Some of recent projects completed by AI include:

- Bell Air Summit Apartments 30 Retrofit and renovate units of two-story apartments / town homes.
- San Pablo Senior Apartments 82 Unit Senior Apartment Building 1 story podium parking deck.
- Villa Santa Fe Apartments 81 affordable apartments complex comprised of 10 building with pool and playground amenities.
- Vinton Avenue Apartments 35-Unit four-story apartment complex over two levels of subterranean parking.
- Los Angeles Unified School District, Valley Region Elementary School No. 10 Project, 52,000-SF, 25 million dollar K-12 project. Winnetka, CA
- Los Angeles Unified School District, Valley Region Elementary School No. 12 Project, 50,000-SF, 28 million dollar K-12 project. North Hills, CA
- Los Angeles Unified School District, Central Region MacArthur Park Elementary School Addition, a 37,400-SF, 18 million dollar K-12 project. Los Angeles, CA
- Los Angeles Pierce College, Center for the Sciences, 100,000-SF, 43 million dollar classroom and laboratory project. Woodland Hills, CA
- Los Angeles City College, Martin Luther King Library. 40,000-SF, 25 million dollar library and classroom project. Los Angeles, CA
- Los Angeles City College, Science and Technology classroom, 48,000-SF, 24 million dollar classroom and laboratory project. Los Angeles, CA
- West Los Angeles Community College Math and Science Buildings, 60,000-SF, 40 million dollar classroom and laboratory project. Culver City, CA
- West Los Angeles Community College General Classrooms and Student Services Buildings, 100,000-SF, 43 million dollar project. Culver City, CA
- Los Angeles Mission College, Family and Consumer Studies Building, 73,000-SF, 39 million dollar culinary arts project. Sylmar, CA
- Garfield Renaissance Center. This multi-prime project involves 11 separate contracts to construct a 800 car 5 level parking structure, 150 car surface parking lot, a public plaza with fountain and unique art features, multi-plex theater, restaurant and retail buildings, and street improvements consisting of roadway widening, storm drain, sewer, water main, utilities (35 million).



**JEFFREY HIRSH, Sr. Inspector, Inspection Support**

Jeffrey Hirsh has approximately 25 years of experience in general engineering/public works and building construction projects. He has worked in the capacity of foreman, site superintendent and project manager. In these capacities, he has been involved in a wide variety of private and public works construction projects in Type A (General Engineering) and Type B (Building) construction. He has knowledge of standards and procedures for public agencies, including the Green Book, Caltrans, and has extensive experience in traffic control, safety and OSHA compliance requirements.

Mr. Hirsh also has experience in inspecting federally funded projects to ensure compliance with the Caltrans Local Assistance Procedures Manual. He also has extensive experience in communicating/working with the public/adjacent property owners, and being proactive in dealing with complaints and comments and minimizing project impacts.

**His Experience Includes:****HIGHLIGHTS**

- 30 years of experience in general engineering/public works and building construction projects.
- Worked as PW inspector for a number of agencies under Transtech Contracts.
- Experience includes all types of PW improvements, local roads, pavement rehabilitations, water, sewer, storm drain, traffic signals, striping, grading, utilities.
- During his employment with Transtech, he has inspected projects that included street, sidewalk, water, sewer, storm drain, park improvements.
- He also oversees traffic control and job site maintenance/NPDES/BMP measures on construction site.
- He was the on-site inspector for a major water main installation project in Commerce. Work was done during night time to avoid lane closures during day time on the major arterial where work was performed. The second phase of this project will involve extension of the new line thru Caltrans ROW (710 Freeway).
- He also was the lead inspector for the Lugo Park Artificial Turf Soccer-Field and Park Project in the City of Cudahy, which included reclaimed water irrigation. The project was CDBG Federally Funded (\$1.6m)
- He also served as one of the Sr. PW Inspectors on 3 major projects as part of Transtech's CM Team in the City of Commerce, where Transtech serves as the City's CIP Manager.
- The current on-going construction projects being managed by Transtech in Commerce include:
  - Washington Bl Widening and Reconstruction Project (\$30m, Federally Funded)
  - City-Wide Annual Street Rehab Project (\$3.2m)
  - Slauson Avenue Tree and SW Replacement Project (\$1.5m)
  - Metrolink Station Improvements (\$0.5m)

**Jeffrey's prior experience includes:***2013-214, PSBI Parking Structure Construction*

- Sr. Superintendent Construction of a 6-level parking structure for the City of Alhambra.
- All budgetary and supervisory site management responsibilities.

*1995-2013, Harwood Homes, Inc.*

- Vice President - Construction/Forward Planning Managed 35 Development Projects - SFR/Multi-Unit/Commercial
- Raw land development through onsite construction, including final and post occupancy. Supervised all aspects of planning, development and construction processes.
- Responsible for construction of 2000+ single family homes.





- Responsible for construction of 850+ attached units.
- Successfully developed and completed multiple commercial project sites including strip centers and a large, automated car wash facility.
- Supervised 20+ Construction Superintendents.
- Managed bidding processes, procedures and estimation, including managing 5 Purchasing Managers/Agents.
- 20+ year track record of job site safety controls with zero significant job site accidents, and zero Cal-OSHA violations.
- Compliance Management for all codes, conditions and ordinances.
- Implemented industry standard customer service system.
- Functioned as forward planning liaison to Civil Engineering Firms.
- Served on Project Evaluation/Selection Committee for 15 years.

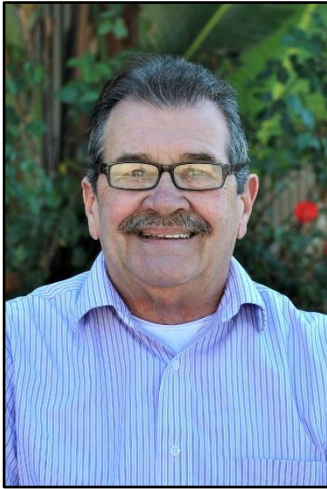
*1992-1995, Overland Company*

- Site Superintendent – SFR Tract Home Development

*1985-1992, Cambridge Development*

- Customer Service Manager – Tract Home Development
- Site Superintendent/Assistant Superintendent



**MARIO MAGLIOCCHETTI, Sr. Inspector**

Mr. Magliocchetti has approximately 30 years of experience in general engineering/public works and building construction projects. He has worked in the capacity of foreman, site superintendent and project manager. In these capacities, he has been responsible for more than \$500 million worth of private and public works construction projects in Type A and Type B construction. He has knowledge of standards and procedures for many public agencies, including the Green Book, and has extensive experience in traffic control, safety and OSHA compliance requirements. He has participated on numerous multi-disciplinary teams dealing with the architecture and engineering for urban and rural development, infrastructure, and public works projects.

Mr. Magliocchetti also has experience in inspecting federally funded projects to ensure compliance with the Caltrans Local Assistance Procedures Manual. He also has extensive experience in communicating/working with the public/adjacent property owners, and being proactive in dealing with complaints and comments and minimizing project impacts. Some of the major projects where Mr. Magliocchetti has served as Public Works Inspector are as follows:

**HIGHLIGHTS**

- 30 years of experience in general engineering/public works and building construction projects.
- Worked as PW inspector for a number of agencies under Transtech City Engineer Contracts.
- Extensive experience in NPDES.
- Inspected numerous federally funded projects in compliance with Local Assistance Procedures Manual, as well as projects under Caltrans' jurisdiction.
- Experience includes all types of PW improvements, local roads, pavement rehabilitations, water, sewer, storm drain, traffic signals, striping, grading, utilities.
- **City of San Bernardino, Contract Public Works Inspector:** Provided inspections as contract City Inspector for FY 2015/16 Street Rehab and Sidewalk ADA Improvements (\$4m construction).
- **City of Temple City, Contract Public Works Inspector:** Provided inspections as contract City Inspector for various projects.
- **City of Commerce, SR2S, Bus Shelter and Sidewalk and ADA Impr Project:** The project involved installation/reconstruction of Bus Shelters, sidewalks and ADA Ramps under FTA Fed Funded Program. Construction Cost was \$1.5m.
- **City of La Habra Heights, Pavement Rehab Project:** The project involved pavement rehabilitation (overlay, slurry seal, R&R) on various streets. Construction cost was \$2m.
- **City of Alhambra-Fremont Avenue and Valley Boulevard roadway, median and landscape improvements:** These projects involved construction of roadway, raised median, striping, traffic signal loops, sidewalk, planters, landscape and irrigation improvements. Total construction cost for both projects was \$13m.
- **City of Commerce-Tubeway Street Reconstruction:** This project involved construction of roadway, striping, traffic signal loops, and sidewalk improvements. Construction cost was \$1m.
- **City of Hawthorne-Rosecrans, Hindrey, 405 Ramp:** This project involved roadway widening and reconstruction, traffic signals, utility undergrounding, water, sewer, electrical, raised median, sidewalk, planters, landscape and irrigation improvements. The project was coordinated with Caltrans for improvements at the 405/Hindery ramps. Coordination with local businesses has been imperative to maintain a positive image for the City as construction took place in a very busy commercial district. Construction cost was \$3m.
- **City of Alhambra-Polo Club Parking Lot:** The project included extensive grading and over excavation, demolition of existing buildings, underground electrical system, pavement, planters, walls, landscaping, irrigation, lighting and various concrete improvements. Construction cost was \$1m.
- **City of Alhambra Redevelopment Agency-Main Street Facade Project:** The project involved construction of seismic upgrade and new facade improvements on a City block under the CDBG funding program. Construction cost was \$4m.



**OKAN DEMIRCI, MBA, EIT, Project Manager, Project Controls Support**

Mr. Demirci has approximately 9 years of experience. Mr. Demirci serves as Assistant Public Works Director and Assistant City Engineer at Transtech's Contract Cities and provides technical and management support.

Mr. Demirci completed Caltrans Resident Engineer Academy, very familiar with the management and administration of federally and state funded projects in compliance with Caltrans Local Assistance Procedures Manual (LAPM).

Mr. Demirci works as Project Manager on various projects (including federal and state funded projects) from project inception to closeout.

Examples of his project experience includes:

**EDUCATION**

- MBA, Brandeis University, Massachusetts
- BS, Engineering, Sabanci University, Turkey

**HIGHLIGHTS**

- Serves as CIP Program Manager and Assistant Public Works Director and Assistant City Engineer at Transtech's Contract Cities.
- Completed Caltrans Resident Engineer Academy, very familiar with the management and administration of federally funded projects in compliance with Caltrans Local Assistance Procedures Manual (LAPM).
- Strong knowledge of MS Project, Primavera, AutoCAD

- **City of Monterey Park, Assistant to the Interim PW Director and CIP Program Coordinator:** Mr. Demirci serves as an assistant to the Interim PW Director. As part of his responsibility, he coordinates Capital Improvement Projects (CIP) program at the City. Mr. Demirci prepares PS&E packages for various projects for Parks & Rec and Public Works Department. He also provides project management to various projects from project inception to project close out for the City. Highlighted projects are:
  - Parks & Rec Master Plan Development and Construction of Improvements at 13 parks (including picnic shelters, playgrounds, irrigation systems installations and ADA improvements). Cost \$1.5m
  - Citywide Parking Lot Reconstruction and Various City Facility Restoration/Maintenance (including Cascades Waterfall Restoration, City Pool Maintenance, Various other City facility maintenance). Cost \$2.5m
- **City of Temple City, Assistant City Engineer (Transtech serves as Contract City Engineer):** Mr. Demirci serves as Assistant City Engineer. His main responsibilities include managing City's CIP program. Mr. Demirci prepares PS&E packages for various City projects and manages CIP projects from project inception to project closeout. Highlighted projects are:
  - City's Annual Pavement Management Program: Mr. Demirci prepared and managed City's PMP since 2013. He coordinated in preparation of bid packages following recommendations from PMP and managed projects in PE and CE phases. Annual cost: \$1.5m
  - Pedestrian and Bike Safety Improvements on Temple City Blvd, El Monte and Various Locations Citywide (HSIP Federally Funded): Mr. Demirci worked as project manager in PE and CE phases of federally funded projects. These projects were managed in compliance with applicable federal requirements. Cost: \$1.5m
- **City of Cudahy, Pedestrian Safety Improvements, (ATP):** Served as Project Manager for this \$1.0m project. Project includes construction of pedestrian safety improvements such as curb extensions, installation of traffic devices, signs, striping.
- **City of Cudahy, Lugo Park, Soccer Field Project (CDBG Federally Funded):** Served as Project Manager for this \$1.6m project includes construction of a regulation new soccer field with artificial turf on existing baseball field, DG walking path, landscaping, parking lot expansion, concrete plaza, lighting, drainage, bathroom and concession stand ADA improvements. The project





is CDBG federally funded and being managed in compliance with applicable CDBG requirements.

- **City of Commerce, Slauson Avenue ADA Improvements and Tree Replacement Project:** Served as Project Manager for this \$1.2m ADA Improvements and tree replacement project.
- **City of Commerce, 2016 City-wide Street Rehabilitation Project:** Served as Project Manager for this \$4m street rehabilitation project.
- **City of Temple City, Council Chambers Renovation and ADA Improvements Project:** Served as Project manager for the preparation of the plans, specifications and cost estimates and bid package for the renovation and ADA improvements of the Council Chambers Building. The improvements included complete reconstruction/renovation of the Council Chambers with new seating, dais, carpet, lighting, AV system, and new ADA compliant bathrooms, new ADA compliant access to the building, new emergency generator and electrical work, re-design of building creating a space for Emergency Operations Center, asbestos removal, painting and other various improvements. Cost approximately \$0.5m.
- **City of Temple City, CDBG ADA Improvements Project:** Served as Assistant Project manager for the preparation of the plans, specifications and cost estimates and bid package as well as field reviews for ADA and sidewalk improvements at various locations thru out the City under CDBG funds. Cost approximately \$0.4m

**Deputy Project Manager, Supporting/Backup Office Engineer for Rosemead Safety and Enhancement and ADA Improvements Project:** Served as one of the Office Engineers for the Rosemead Safety and Enhancement Project. The project included widening and reconstruction of 2 miles of Rosemead Boulevard, including new medians, bike lanes, signals, sidewalks, curb&gutter, street lighting, landscape, street scape. The project is federally funded and is managed in compliance with Caltrans Local Assistance Procedures Manual. Cost \$20m.





**AVANT-GARDE (DBE Firm); [www.agi.com.co](http://www.agi.com.co); CDBG Labor Compliance Support**

## Grants and Funding Administration

### *Partners in Fiscal Responsibility*

Now, more than ever before, communities are challenged to maintain needed services and programming. Aging infrastructure demands and statewide economic crisis are a constant concern. Seeking, identifying, and implementing alternative funding mechanisms to maintain services and projects is vital to a community's sustained quality of life. AVANT-GARDE specializes in government funding and grant sources with requirements ranging from basic applications and documentation to competitive project submittals. Our team has been instrumental in securing and managing millions of dollars for Southern California projects.

AVANT-GARDE staff assist our clients in identifying Federal and State fund allocation balances, assist in determining eligible projects, provide advisement of program requirements and are available to prepare and administer the program as required by the funding agencies.

Additionally, our team provides administrative responsibilities such as assistance with the preparation and monitoring of the operating budget and Capital Improvement Program budget. Analyze the agency's needs and prepare, recommend and administer long-and-short range programs consistent with the economic capabilities of the agency, including information vital to the preparation of the annual improvements budget for the agency. Search grants, submit applications, and work with various funding agencies in completing State and Federal forms to ensure that our clients are in compliance with grant requirements.

#### FEDERAL AGENCIES

CDBG Funds  
HOME Funds  
Section 108 Loans  
Emergency Shelter Grants  
Land and Water Conservation Grants  
Economic Development Initiative  
– Special Project  
High Priority Projects (HPP) (Earmarks)  
US EPA Capital Improvement Grant

#### SAFETEA-LU

Hazard Safety Improvement Program (HSIP)  
Highway Bridge Replacement and  
Rehabilitation Program (HBRRP)  
Safe Routes to School (SRTS)  
STPL Funding  
Transportation Enhancement Activities  
Programs (TEA)  
Congestion Mitigation and Air Quality  
Management (CMAQ)  
Transit Section 5309 Bus Facility

#### LOCAL PROGRAMS

Rivers and Mountains Conservancy  
LA County Prop A & C Funds  
Orange County Measure M Funds  
TDA Article 3 Funds  
LA County Maintenance and Servicing Funds

#### STATE AGENCIES

Bicycle Transportation Account (BTA)  
Gas Tax Funds  
Per Capita Funds  
Sustainable Communities Grant & Incentives  
Program  
Youth Soccer & Development Program-  
Prop40  
State Coastal Conservancy Funds  
River Parkway Water Bond 2000  
Office of Traffic Safety Grant (OTS)  
Recreational Trail Grants  
Roberti-Z'berg-Harris Grant  
Murray-Hayden Urban Parks and Youth  
Service Grant Program  
Statewide Park Development and Community  
Revitalization Program  
Tire Recycling, Cleanup  
and Enforcement Grants  
Cal Fire Urban Forestry Tree Planting Grant  
Regional Surface Transportation  
Improvements (RSTI) MTA Call for Projects  
Transportation Funds Prop 42  
Safe Routes to School (SR2S)  
Proposition 1 B  
Caltrans Transportation Planning Grants





## Lissette Calleros

Program Director

### Years of Experience

15 +years

### Education

B.S. Business  
Management  
California State  
Polytechnic University  
Pomona

A.A. General Studies  
Mount San Antonio  
College

### Professional Affiliations:

National Women Political  
Caucus – LA Metro  
National Association of  
Professional Women

Ms. Calleros has 15 years of experience in Program Management. Ms. Calleros expertise is in administering federal and state funded projects, program development, and records management. She provides funding administration to ensure that cities develop their projects in accordance with policy and procedural requirements, assists in determining eligible projects for various funding sources, and manages development and capital improvement programs/projects from conception to completion. She has experience in identifying federal and state fund allocation balances, programming funds, and administers long-and-short range programs consistent with the economic capabilities of the City.

## RELEVANT PROJECT EXPERIENCE

As the Program Director, Ms. Calleros oversees all assigned staff and ensures successful administration of all funding requirements. Ms. Calleros is responsible for all quality assurance/quality control efforts as it relates to funds management. Ms. Calleros has over 13 years of experience in managing federally funded projects. She has a keen understanding of the Caltrans process and managing projects in accordance with the Local Programs Procedures Manual (LAPM). Ms. Calleros and her team have successfully monitored Capital Projects and Programs for municipal agencies throughout Southern California. Presently Ms. Calleros and her team administer Federal and State Funded projects in the Cities of Industry, Diamond Bar, La Mirada, Temple City, Bell Gardens, Montebello, Lynwood, Rosemead and Perris. Ms. Calleros and her team have assisted cities at various stages of a federal funded project including Federal Programming (FTIP), submission of Obligation Plans, Request for Authorizations to Proceed with Preliminary Engineering, Right-of-Way and/or Construction, Obtaining Caltrans Right of Way and Environmental Clearances, Award Submittals, preparation and submission of Progress Invoices and Final Report of Expenditures, DBE/UDBE Monitoring, Bid Analysis for Federal Compliance, monitoring on-the-job training programs and have participated in FHWA/Caltrans Audits.

She is experienced in issues impacting City governments, and has comprehensive expertise in contract administration. Her responsibilities have included interfacing with Federal, State and Local Agencies to define develop and manage project scopes, schedules, cooperative agreements and overall project management to ensure projects are delivered on time and on schedule.





## Lisette Calleros

Program Director

### Years of Experience

15 +years

### Education

B.S. Business  
Management  
California State  
Polytechnic University  
Pomona

A.A. General Studies  
Mount San Antonio  
College

### Professional Affiliations:

National Women Political  
Caucus – LA Metro  
National Association of  
Professional Women

Ms. Calleros has 15 years of experience in Program Management. Ms. Calleros expertise is in administering federal and state funded projects, program development, and records management. She provides funding administration to ensure that cities develop their projects in accordance with policy and procedural requirements, assists in determining eligible projects for various funding sources, and manages development and capital improvement programs/projects from conception to completion. She has experience in identifying federal and state fund allocation balances, programming funds, and administers long-and-short range programs consistent with the economic capabilities of the City.

## RELEVANT PROJECT EXPERIENCE

As the Program Director, Ms. Calleros oversees all assigned staff and ensures successful administration of all funding requirements. Ms. Calleros is responsible for all quality assurance/quality control efforts as it relates to funds management. Ms. Calleros has over 13 years of experience in managing federally funded projects. She has a keen understanding of the Caltrans process and managing projects in accordance with the Local Programs Procedures Manual (LAPM). Ms. Calleros and her team have successfully monitored Capital Projects and Programs for municipal agencies throughout Southern California. Presently Ms. Calleros and her team administer Federal and State Funded projects in the Cities of Industry, Diamond Bar, La Mirada, Temple City, Bell Gardens, Montebello, Lynwood, Rosemead and Perris. Ms. Calleros and her team have assisted cities at various stages of a federal funded project including Federal Programming (FTIP), submission of Obligation Plans, Request for Authorizations to Proceed with Preliminary Engineering, Right-of-Way and/or Construction, Obtaining Caltrans Right of Way and Environmental Clearances, Award Submittals, preparation and submission of Progress Invoices and Final Report of Expenditures, DBE/UDBE Monitoring, Bid Analysis for Federal Compliance, monitoring on-the-job training programs and have participated in FHWA/Caltrans Audits.

She is experienced in issues impacting City governments, and has comprehensive expertise in contract administration. Her responsibilities have included interfacing with Federal, State and Local Agencies to define develop and manage project scopes, schedules, cooperative agreements and overall project management to ensure projects are delivered on time and on schedule.







Diamond Bar. The overall project budget is approximately \$18 million. Avant-Garde is also processing the documentation for this project to obtain Caltrans Authorizations, reimbursements and project closeout activities. Ms. Calleros also serves at the City's representative in Caltrans PDT meetings.

- **Alondra/Valley View Improvements:** The City of La Mirada is a member of the Interstate 5 Joint Powers Authority to deliver regional arterial improvement projects to serve as bypass routes in advance of the I-5 Widening Project from the I-605 and the north Orange County line. The Valley View Avenue and Alondra Boulevard intersection, located approximately 1400 feet north of the I-5, will need to handle considerably more truck and commercial vehicle traffic as a result of the mainline ramp closures during the widening project. Avant-Garde is providing the Fund Management, Program Management, and Labor Compliance services for this federally funded \$2.5 million project. Services include expedited obligation of federal earmark funds, coordination with I-5 JPA, QA/QC of specifications and estimates, detailed project accounting, bid administration support, labor compliance and certified payroll review.
- **Rosemead Blvd Beautification and Enhancements Project:** Avant-Garde provides funding administration services for this \$20 million federally funded project (total of 14 funding sources). Avant-Garde coordinates with the design engineer, project management team and City staff to ensure that the project is implemented in accordance with State and Federal funding guidelines, as well as provide fiscal advisement on the uses of local funds for various aspects of construction activities. Services include coordination with Caltrans and preparation of submittals for authorization requests and reimbursements, tracking of project costs for reimbursement purposes, final project closeout coordination with Caltrans and labor compliance and certified payroll review. In addition, Avant-Garde secured \$3.8 million of grant funds for the project.





## GEO-ADVANTEC; [www.geoadvantec.com](http://www.geoadvantec.com); Materials Testing and Inspection Support

### GEO-ADVANTEC, INC.; [www.geoadvantec.com](http://www.geoadvantec.com); Soils/Geotechnical, Materials Testing/Inspection Support

Geo-Advantec, Inc. offers comprehensive services in various areas from site feasibility evaluation through project completion for a wide range of projects. Our highly-qualified team of professionals has extensive experiences in performing variety of complex geotechnical engineering projects and providing innovative solutions for complex projects. In addition, our diverse team of field technicians and inspectors with related technical backgrounds, education, and accreditations are well experienced to support the construction course of projects. Geo-Advantec, Inc. is vastly specialized to provide the following services:

- Geotechnical Engineering
- Engineering Geology
- Geotechnical Earthquake Engineering
- Geotechnical Instrumentation
- Pavement Engineering
- Forensic Geotechnical Engineering
- Grading Monitoring and Field Testing
- Soils & Materials Laboratory Testing
- Special Inspection Services

### PROJECTS

**City of Commerce, Washington Boulevard Rehabilitation (2015):** Washington Boulevard is a major east-west corridor that serves as one of the significant connectors between the I-710 and I-5 Freeways carrying approximately 35,000 vehicles per day, 25% of which is truck traffic. This segment of roadway is the key link in the regional movement of goods from the ports of Los Angeles and Long Beach to the terminals of the Union Pacific Railroad and Burlington Northern Santa Fe Railways. The job was a reconstruction and widening project covering a 2.7-mile segment of Washington Boulevard between Indiana Street to the Santa Ana (I-5) Freeway. The project was to improve truck circulation and current level of service operations by reducing delays and traffic while improving the overall air quality. It would widen the mentioned segment from two lanes to three lanes in each direction, which would allow for an increase in the turning radius and larger medians for better traffic flow. Geo-Advantec was selected as the Caltrans certified laboratory and provided field inspection/testing and laboratory testing in compliance with Caltrans Local Assistance Manual. Our team performed testing and inspection on flexible and rigid pavements per the project/Caltrans requirements. We also measured the compressive and flexural strengths of different types of concrete pavement components. The project duration was about 24 months and the construction cost was approximately \$30M.



**City of Alhambra, 5-Story Parking Structure (2014 – 2015):** Geo-Advantec provided soils monitoring/observation, special inspection, and material testing for a 5.5-story Parking Structure at the North 1st Street of the City of Alhambra. The structural system of the proposed parking building comprised of post-tension decking supported by reinforced concrete columns resting on spread and strip footings. The perimeter concrete walls were constructed using shotcrete method.



**City of Temple City, Rosemead Boulevard Safety Enhancement and Beautification (2012-2014):** The project consisted of streetscape enhancements on Rosemead Boulevard to improve safety and aesthetics within the Temple City right-of-way. The proposed improvement was over approximately 2 miles of road, from the southern city limit with the City of Rosemead at the UPRR railroad bridge to the Northern city limit with the County of Los Angeles at Callita Street. In general, the project features included Removal and replacement of existing sidewalks, asphalt pavement, concrete pavements, curb and gutters, curb ramps and existing short retaining walls, construction of localized decorative pavements and crosswalks, removal and replacement of drains and installation of new drain system, installation of new irrigation system lines, improvement of underground utilities, installation of traffic signals and traffic signs, construction of bus shelter, median hardscape, and installation and improvement of street and pedestrian lighting. The project was federally funded and performed under the Caltrans oversight. Geo-Advantec provided the resident



inspector of record services for the project. The duration of the project was about 16 months and the construction cost was about \$18M.

**City of Santa Monica, Three-Story Parking Structure (2012):** In 2012, Geo-Advantec conducted a comprehensive geotechnical study for a proposed three-story parking structure to be constructed at 1543 Ocean Front Walk, Santa Monica, California. The site was along and within a close distance from the shore line and our study on the site location concluded that the underlying soils strata at the site consisted of materials susceptible to liquefaction. In addition, regional seismicity and presence of major active faults was considered a signification hazard source in the site vicinity and required a thorough seismic hazard study at the site. The investigation was completed in a short time and the final report included our assessment of the site condition, post-liquefaction settlements at the site, and different mitigative alternative for earthquake-induced settlement.

**Los Angeles Department of Water and Power (LADWP), Trunk Line South, Unit 4, Phase 2 (2016):** Geo-Advantec, Inc. provided geotechnical instrumentation and monitoring for the City of Los Angeles Trunk Line South, Unit 4, Phase 2. The project purpose was studying and monitoring the displacement of the deep tunnel shafts' walls and settlement of the underground tunnel due to construction of a new sewer line. To monitor the movement and settlement during the construction, GAI installed four inclinometers, each between 25 to 40 feet deep, and six vertical/deep extensometers of about 70 feet deep. The reports of instrumentation readings were prepared and provided to the project team on a daily base.

**City of Pomona, Storm Water Disposal at Gary Avenue (2015):** The City intended to design and construct an on-site storm-water disposal system. The system would collect and infiltrate Garey Avenue runoff into the ground. Geo-Advantec scope of work included conducting several exploratory borings at the designated locations, conducting SPT and sampling at 3 feet intervals for the substrata profile determination, collecting disturbed/bulk samples of the encountered subsurface material, conducting three percolation tests at a depth targeting the most permeable layer, performing laboratory testing on the selected soils samples, reviewing the field data and the laboratory test results, performing engineering analyses, and preparing a final geotechnical evaluation report that included results of our field and laboratory testing and determined infiltration rates at the site. Our team completed the project in less than two weeks.

**Los Angeles Metropolitan Transportation Authority (METRO), Initial Site Assessment (ISA), Preliminary Geotechnical Study, and Pavement Engineering Study for Lakewood and Alondra Intersections, City of Bellflower, California (2015):** The Los Angeles County Metropolitan Transportation Authority (Metro) completed a Feasibility Study analyzing and identifying several "hot spots" along the SR-91, I-605, and I-405 corridors. These "hot spots" are chronic traffic congestion areas and causing the flow of traffic throughout the area to slow down to a stop. One of the improvements proposed by Metro and the California Department of Transportation (Caltrans) in collaboration with the Gateway Cities Council of Governments and the San Gabriel Valley Council of Governments for the I-605 Hot Spots was the Lakewood and Alondra intersection. The intersection was among the "Top 40" intersections selected for initial improvement evaluation. Geo-Advantec provided Initial Site Assessment (ISA) report and Pavement Engineering Study for the project. Geo-Advantec Inc. (GAI), provided the Initial Site Assessment (ISA) for the project. The scope of the work included but was not limited to review of physiographic information including regional geology and hydrogeology, review of topographic maps and aerial photographs, review of site history and land use within the Site vicinity, review of federal, state, tribal, and local government agency records. Also, by conducting several borings/coring through the pavement section, necessary data about the existing pavement section and subgrade soils were collected, a preliminary geotechnical and pavement engineering report was prepared and the new pavement section was designed.

**Los Angeles International Airport (LAX), Geotechnical Grading, Monitoring and Testing for Qantas Hangar (2015-2016):** In January 2015, Geo-Advantec began working on a mass grading project in the LAX. The project included grading operations for a large area located on the west end of the airport and included grading for a large-span hangar for Qantas Airline, with a footprint of about 110,000 sf. The job included raising the existing natural grade to the designated elevation by placing and compacting of up to 30 feet earth materials. Geo-Advantec performed as the geotechnical engineer of record (GEOR) for the project and provided qualified Deputy Grading Inspectors certified by both ICC and the City of Los Angeles to monitor the grading work, and perform field density testing on a daily basis. Also, during the construction of Aprons and taxiways carrying mega planes, we performed concrete inspection. The beam samples of concrete were casted and tested for flexural strength in our laboratory.

**City of Torrance, Torrance Transit Park and Ride Regional Terminal, Phase I-Rough Grading (2016):** City of Torrance intended to construct a Transit Park and Ride Regional Terminal to create a strategically located, multi-modal facility that meet the regional needs of South Bay residents. The project was to improve regional mobility by linking Torrance Transit routes with other regional providers in the Transit Terminal. The Phase I of the job included rough grading of half of the existing fifteen-acre undeveloped site, located at 465 Crenshaw boulevard, which would be dedicated to the Transit Terminal. The City of Torrance retained Geo-



Advantec for grading observation and soils testing of different components of the project including proposed one-story and two story buildings, bus platform, canopies, and pavement of the designated areas. To complete the project, about 45,000 cubic yards of soils were imported to the site. The purpose of testing and inspection operations was to verify that the completed work complied with the project plans, specifications, special provisions, and geotechnical recommendations.

**Centinela Valley Union High School District, Hawthorn and Lawndale High Schools Developments (2013-2014):** In 2013, Geo-Advantec conducted four separate geotechnical and geohazard investigations for the Centinela Valley Union High School District at Hawthorne and Lawndale High Schools within the city of Hawthorne, California.

The development in Hawthorne High School included a one to two-story amphitheater, a two-story classroom building, and a drop off parking area and two parking lots. The proposed developments in Lawndale High School consisted of the construction of a two-story student union service building along with the associated site work in the building vicinity, a two-story classroom building and the repaving of the existing asphalt paved parking area on the south and southeast side of the proposed building. Geo-Advantec conducted field exploratory works, and performed laboratory tests on collected soil samples. After performing engineering analysis, we provided the District with final reports which were approved by CGS (California Geologic Survey).

**Fullerton Joint High School District, Seismic Rehabilitation of Historical Plummer Auditorium (2015):** Geo-Advantec team performed a comprehensive geotechnical evaluation to provide information for design and construction of the project. The auditorium building was considered a historical site built circa 1930s'. Our field geotechnical study included conducting 5 borings, as deep as 60 feet, as well as measuring Vs30 (shear wave velocity for the upper 30 meters) at the field by using Spectral Analysis of Surface Wave (SASW) method. GAI team performed laboratory tests on selected samples as well as engineering analysis. And provided all the soils parameters complying with the methods outlined in ASCE 41-13. To evaluate the seismic hazard at the site, we conducted site-specific study (probabilistic and deterministic hazard analysis) and provide the structural team with the site-specific spectra.







## Geo-Advantec Inc.

Geotechnical Engineering, Earthquake Engineering, Engineering Geology

### SHAWN ARIANNIA, Ph.D., P.E, G.E PRINCIPAL GEOTECHNICAL ENGINEER

#### EDUCATION

- B.S., Civil Engineering (1982), University of Tehran
- M.S., Civil Engineering (1985), University of Tehran
- Ph.D., Geotechnical Engineering, University of California, Los Angeles (UCLA)

#### REGISTRATION

- Registered Geotechnical Engineer: California, #2824
- Professional Civil Engineer: California, #65642
- Past President, ASCE Inland Empire Geotechnical Committee

#### EXPERIENCE HIGHLIGHTS

- 32 years of experience in Civil Engineering and Geotechnical Engineering Projects for Public and Private Clients
- Served as the Geotechnical Engineer of Record and completed more than 200 geotechnical study for DSA projects in California, including schools and community colleges
- Saved Hundreds of Thousand Dollars for Clients by Providing High Quality yet economic alternate geotechnical engineering Solutions
- High Extent of familiarity with all the tasks involved in transportation projects
- Vast knowledge and experience in Geotechnical Seismic Rehabilitation Study and Site Specific Evaluations
- Extensive Experience in Pavement design, retrofit and management projects with various cities in Southern California
- Geotechnical engineering for various transportation, bridge, parking structures and commercial buildings

Dr. Ariannia has more than 32 years of experience in design, supervision and technical management for projects in the structural and geotechnical fields. He possesses extensive and responsible experience in design, supervision, and technical management of major projects in both structural and geotechnical fields. He has been involved in major projects such as transportation/transit, highway and railroad bridges, tunnels, power plants, cooling towers, silos, and medium to high-rise multi story structures. The breadth of his experience includes geotechnical analysis, field and laboratory test management, slope stability and liquefaction analysis, seismic hazard evaluation, pile and earth retaining structures design, design and implementation of soils and slope stabilization, repair and retrofit methods relevant to soils, foundation, and structural behavior for different types of structures. During last two decades, he has actively practiced geotechnical engineering and consulting in southern California and has been the Geotechnical Engineer of Record for numerous road, highway and transportation projects, educational projects, multi-story buildings and parking structures with deep excavations and multiple subterranean floors subject to buoyancy.

He served as the principal geotechnical engineer for various types of projects including:

- Transportation, Transit, Pavement Engineering, Bridges, and Parking Structures
- Aviation, Ports and Harbors
- Public works, Cities, and Municipalities
- Schools and Educational Facilities
- Hospitals and Medical Facilities

#### TRANSIT AND TRANSPORTATION EXPERIENCES

- Principal geotechnical engineer of Los Angeles County Metropolitan Transportation Authority (Metro) project, PA/ED for I-605/SR-60 interchange improvement, County of Los Angeles
- Principal geotechnical engineer of Los Angeles County Metropolitan Transportation Authority (Metro) project, PA/ED and PS&E phases for I-605/SR-91 to South Street, County of Los Angeles
- Principal geotechnical engineer of Los Angeles County Metropolitan Transportation Authority (Metro) project, Preliminary Geotechnical Engineering, Initial Site Assessment (ISA), and Phase II Environmental study for Lakewood and Alondra Intersections (Metro Hotspot Project), City of Bellflower
- Principal in charge of the geotechnical instrumentation and monitoring for Trunk Line South, Unit 4, Phase 2 for Los Angeles Department of Water and power (LADWP) and instrumentation of deep shafts of cut and cover
- Project Manager, geotechnical engineer, and supervisor of the field geotechnical monitoring and testing for the construction of a new railroad (Exposition Light Rail) for the County of Los Angeles, Metropolitan Transit Authority (MTA), from the City of Los Angeles





# Geo-Advantec Inc.

Geotechnical Engineering, Earthquake Engineering, Engineering Geology

Angeles to Culver City

- Geotechnical Engineer and project manager of railroad widening at El Cajon Pass. He supervised the team of field geotechnical personnel providing testing and monitoring services during the railroad widening at El Cajon Pass
- Project manager and supervisor of the field geotechnical monitoring and testing team for Amtrak progressive maintenance facility construction.
- Principal Geotechnical engineer in charge of soils and foundation investigation for bridges within an about 100 miles, double-track Bafgh-Bandar Abbas railroad project in Iran
- Principal geotechnical engineer of City of Long Beach Geotechnical, Geologic, and Geohazard Study for Queen Mary Waterfront Development at Port of Long Beach, City of Long Beach
- Principal geotechnical engineer for Caltrans, Cenda Bridge (Br. No. 54-1308L) on I-15 Replacement Project
- Principal geotechnical engineer of Caltrans Schuyler Heim Bridge piers in Wilmington, CA Monitoring on Core sampling and logging for large diameter piles.
- Principal geotechnical engineer and reviewer of geotechnical constructability review project for the Port of Los Angeles developments including C Street/I-110 Freeway Access Ramp Improvements, Harry Bridges Boulevard Undercrossing, Bridge No. 53-3048S and retaining walls 318 and 320
- Principal geotechnical engineer/Pavement Consultant for Washington Boulevard rehabilitation project in the city of Commerce
- Principal geotechnical engineer for the pavement rehabilitation of Eastern Avenue in the city of Commerce
- Principal geotechnical engineer of citywide pavement study for the city of Pomona
- Principal geotechnical engineer for the city of Torrance transit park and ride regional terminal, Phase I, rough grading
- Principal geotechnical engineer of geotechnical field engineering and testing for the Los Angeles International Airport (LAX)
- Project manager and Geotechnical supervisor of the field testing and inspection as well as laboratory testing for Del Amo boulevard project of the city of Torrance
- Project manager and supervisor of the field testing and inspection as well as laboratory testing for pavement rehabilitation project of the city of La Mirada
- Geotechnical Engineer in charge of field monitoring and testing for capacity assessment and PDA/CAPWAP analysis review on piles for San Ysidro Border Station bridge, San Diego, CA
- Geotechnical engineer and supervisor of field soils monitoring and lab testing team for





the widening of the Garden Grove Freeway (State Route 22)

- Principal geotechnical engineer for the West Los Angeles College new half-mile road, Second Access Road, connecting Jefferson Blvd. to Sophomore Drive.

***Forensic Engineering/Peer Review***

- Geotechnical Engineer for Port of Los Angeles: The Project involved performing a geotechnical constructability review on the developed documents for C Street/I-110 Freeway Access Ramp Improvements, Harry Bridges Boulevard Undercrossing, Bridge No. 53-3048S and retaining walls 318 and 320
- Forensic Engineering, Site Specific seismic evaluation and Expert Witness Services for 6-story Hume Apartment Building, Ontario, Canada
- Geotechnical Peer Review for the City of South Pasadena
- Geotechnical Peer Review for the City of Azusa
- Various geotechnical forensic projects within Southern California





---

## C. APPROACH AND METHODOLOGY

---



## GENERAL APPROACH

---

We have a structured approach to execute projects in an efficient manner that makes Transtech capable of providing the client with high quality product. Transtech has established guidelines and policies, including written manuals on quality control, project management, and design procedures for its staff. These guidelines ensure a consistent approach to the execution of assignments undertaken by our organization. The following paragraphs describe our general approach to deliver projects in an efficient and cost-effective manner. A project specific approach will be provided for each assigned project, and will become part of the specific contract for the specific project.

- **Project Management:** Our approach is to provide proactive management and attempt to identify potential issues and problems in advance and take corrective actions before they become problems. This requires extensive hands-on knowledge, experience and management skills of the people involved in managing and inspecting the project. Our team members have extensive experience and proven track record in managing large and complex projects and bringing them to a completion on time and within budget.
- **Approach to Cost Control and Change Orders:** We evaluate project costs and develop feasible mitigation measures to minimize additional costs. We work as a team to solve problems or make modifications in the field to address unforeseen conditions or owner generated changes in a cost effective manner.
- **Approach to Scheduling and Timely Completion of Project and Schedule Recovery:** The baseline schedule should properly identify the project scope, critical path, project milestones, target dates, phases and sequences of work, and activity durations. When significant activities show that they are slipping from the baseline, we work with the contractor to develop recovery plans.
- **Management of Documents:** We use an electronic file management system. All construction forms, daily dairies, weekly statement of working days, etc. are stored in our electronic file system, and are per Caltrans documentation system. We provide these documents at the end of the project to the client in organized files as well as pdf files.
- **Safety and Security:** We hold meetings with the contractor to review and discuss safety and security requirements, OSHA conformance, emergency security and safety procedures, and enforce security and safety responsibilities.
- **Funding Closeout:** We prepare necessary closeout documentation required by the funding agencies, submit final reimbursement documentation, follow-up on the reimbursements, and final funds balance report.
- **Project Closeout:** We recognize that closeout is an important part of the construction process. It signifies that the new facility structure is ready to use. We methodically handle all closeout tasks to ensure a smooth transition from construction to occupancy.
- **Methodology for Communication to Inform City on Work Progress:** Key project team members will attend periodic project progress meetings with City staff throughout the project duration.
- **Electronic common project information and file sharing platform:** We create and provide access to project participates a common project information and file sharing platform.



### Contract Administration:

For contract administration, we follow guidelines described in Caltrans Local Assistance Procedures Manual (LAPM). Chapter 16 of LAPM covers the topics beginning with project supervision, contract time, subcontractors, Engineer's daily reports, projects files, construction records and procedures, safety provisions, labor compliance, equal opportunity employment, disadvantaged business enterprise, contract change orders, material sampling and testing, and traffic safety in the highway and street zones. Maintaining complete and accurate files is a very important aspect of managing federally funded projects. Generally, whenever the local agency is unable to produce requested data or information, it is assumed by reviewing personnel that the required actions were either never performed or not properly recorded. Organized project files can minimize these negative assumptions. Organization and content of the project file is one indicator of effective and efficient management of the project by the resident engineer.

### Sample Construction Management Forms - Sample Asst. Resident Engineer Daily Report

<b>Report No.</b>	721	<b>JOB STAMP</b>		<b>Shift Hours:</b>						
<b>Date</b>	2/9/2016	<b>WASHINGTON BLVD. RECONSTRUCTION PROJECT CIP-1401 FEDERAL PROJECT No. HPLUL-5362 (019)</b>		<b>Start</b>	2/9/2016					
<b>Inspector RT</b>				7:00	2/9/2016					
<b>Inspector OT</b>					15:30					
<b>Inspector DT</b>				S	M	TU	W	TH	F	S
				<b>WEATHER</b>						
		Clear								
		<b>Temperature:</b>								
		Low		59	High		90			
<b>ASSISTANT RESIDENT ENGINEER'S DAILY:</b>										
<b>ITEM #33- LEAN CONCRETE BASE (LCB-RS)</b>										
<p>Contractor performed the formwork of the areas of the Washington Blvd from station 22+75 to 23+95 (=120' x 18 x 0.35= 28CY) in front of the AMVAC Chemical plant main entrance on Washington Blvd and Indiana Ave intersection from station 14+31.06 to 15+31 (=99.94 x 18 x 0.35= 23.32 CY). The depth of the areas for LCB-RS is from minimum of 0.35' to 0.42'. Inspection of the depth of the LCB-RS is not including the grade of top of the forms. Contractor has been reminded that the FS for LCB-RS at any and all location should comply with the final grade elevation shown on the project plan and or as directed by the engineer.</p> <p>Contractor used total of 51.32 CY of the LCB-RS with approved mix design #S57010 for today's concrete placement operation. Representatives of the Geo-Advantec Inc. were onsite and at batch plant to inspect and collect sample of the LCB-RS as required by the project standards. See Geo-Advantech inspectors daily report for more details observation and test result for this operation.</p>										
<b>ITEM #31- JOINTED PLAIN CONCRETE PAVEMENT- RS (JPCP-RS)</b>										
<p>In addition to the above LCB-RS operation contractor proceed with forming and placing jointed plain concrete-RS at the location of the AMVAC Chemical Plant on Washington Blvd from station 22+79 to 23+93 (=114 x 0.85x 18= 64.6CY) and at Indiana Ave intersection from station 14+28 to 15+33 (=105 x 0.85 x 18= 59.5 CY).</p> <p>Inspection of the depth of the JPCP-RS is not including the grade of top of the forms. Contractor has been reminded that the FS for JPCP-RS at any and all location should comply with the final grade elevation shown on the project plan and or as directed by the engineer.</p> <p>Contractor used total of 124.1 CY of the JPCP-RS with approved mix design #S80032 for today's concrete placement operation. Representatives of the Geo-Advantec Inc. were onsite and at batch plant to inspect and collect sample of the LCB-RS as required by the project standards. See Geo-Advantech inspectors daily report for more details observation and test result for this operation.</p>										
<b>ITEM #5- STAGE CONSTRUCTION/TRAFFICCONTROL</b>										
<p>Contractor used temporary lane closure for today's concrete placement from Indiana to Oak Ave (westbound). Contractor was reminded that all temporary traffic control devices and lane closure must comply with requirements of California MUTCD, including the use of flagman.</p>										



### Sample Construction Management Forms: Sample Asst. Resident Engineer Daily Report (cont'd)

Report No.	721		JOB STAMP		Shift Hours:	
Date	2/9/16	2/9/16	WASHINGTON BLVD. RECONSTRUCTION PROJECT CIP-1401 FEDERAL PROJECT No. HPLUL-5362 (019)		Start	2/9/16 7:00 AM 15:30
Inspector RT Hours					S	M
Inspector OT Hours					TU	W
Inspector DT Hours					TH	F
ASSISTANT RESIDENT ENGINEER'S DAILY:						
Contractor / Sub-contractor			HOURS - ITEM NO.		WEATHER	
Sully-Miller Contracting					Clear	
					Temperature:	
					Low	59
					High	90
Equipment No	No. Persons / Equipment	DESCRIPTION (Of Equipment or Labor)	ITEM #31 - JPCP-RS	ITEM #33 - LCB-RS	ITEM #32 - JPCP	ITEM #5-STAGE CONSTRUCTION/TRAFFIC CONTROL
	1	Cement Meason	5.0	4.5		
	1	Cement Meason	4.0	4.0		
	1	Labor	5.0	4.5		
	1	Cement Meason	4.0	4.0		
	1	Cement Meason	4.0	4.0		
	1	Cement Meason	4.0	4.0		
	1	Cement Meason	4.0	4.0		
	1	Cement Meason	4.0	4.0		
	1	Cement Meason	4.0	4.0		
	1	Cement Meason	4.0	4.0		
	1	Cement Meason	4.0	4.0		
	1	Cement Meason	4.0	4.0		
	1	Labor	4.0	4.0		
	1	Carpenter	4.0	4.5		
	1	Labor			8.0	
	1	Labor	4.0	4.0		
107409	1	Ford F-250	4.0	4.0		
107401	1	Ford F-250	4.0	4.0		
115014	1	Ford F-450	4.0	4.0		
	1	Gradeall Fork Lift	4.0	4.0		
855405	1	Whiteman Screed		8.0		
720057	1	Wanco ArrowBoard			12.0	
REMARKS (Reason for idleness or other remarks)						
Jose Cortez (Concrete Foreman)						
Jesse Soto						
Pedro Osuna						
Sergio Sanchez						
Gustavo Soto						
Efrin Pizano						
Rigoerto Pizano						
OscarCendjas						
Ralph Maycott						
Alex Florez						

STATE OF CALIFORNIA - DEPARTMENT OF TRANSPORTATION  
RESIDENT ENGINEER'S DAILY REPORT  
ASST. RESIDENT ENGINEER'S DAILY REPORT  
DC-CEM-4501 (OLD) HC-0010 REV 11/92 7541-3508-1

RESIDENT ENGINEER'S DAILY REPORT - FILE CAT. 45 ☒  
ASST. RESIDENT ENGINEER'S DAILY REPORT - FILE CAT. 46 ☐

JOB STAMP  
HPLUL-5362(019)  
WASHINGTON BL  
WIDENING AND  
RECONSTRUCTION

REPORT NO.	116	DATE:	09-28-2015	<input checked="" type="checkbox"/> M	T	W	T	F	S	S	(Circle day)	
SHIFT HOUR:	START 7:00 AM	STOP 3:30 PM	TEMPERATURE:	MIN.	68 ° F	MAX.	86 ° F					
WEATHER	CLEAR											

### Sample Construction Management Forms: Sample Resident Engineer Daily Report

#### Work Done:

Placing Lean Concrete Base (LCB) west of 710 Fwy. STA 69+50 to 65+15 and 64+20 to 62+50;  
Installing transition box for 24" pipe to 12" pipe (Covarrubias Brothers).

#### Work Notes:

SIGNATURE

Ali Cayir, P.E.  
CEM-4501 (HC-0010 REV. 11/92)

TITLE

RESIDENT ENGINEER



### Sample Public Outreach:

When requested, we can also provide an effective public outreach, including setting up a construction information web site, toll free project call number, project e-mail, hold community information meetings, provide public information via e-mails on web sites. We currently have several project specific web sites for various projects under construction. A sample view of one of our construction web-sites is provided (visit <http://www.washingtonblvdcommerce.com/>)



- Website is updated frequently with construction updates, field pictures.
- Approximately 3,600 users viewed the website for a total of 5,189 times to receive project updates.
- On average, the project website was visited over 190 times a month.

### Construction Notices



#### NOTICE OF CONSTRUCTION – FIDELIA AVE & I-5

Posted in Project Updates March 17, 2017 by washadmin 0 Comments

NOTICE OF CONSTRUCTION STARTING 11:30 PM, SUNDAY, MARCH 26TH SOUTH SIDE OF WASHINGTON BLVD BETWEEN...

READ MORE



#### NOTICE OF CONSTRUCTION – CONNOR AVE & RANSOM AVE

Posted in Project Updates March 17, 2017 by washadmin 0 Comments

Notice of Construction STARTING 11:30 PM, SUNDAY, MARCH 19TH CONSTRUCTION ON CENTER PORTION OF WASHINGTON...

READ MORE

### Latest Project Updates



#### MARCH 31 CONSTRUCTION UPDATE

Sully-Miller will do: Curb & gutter concrete, Roadway subgrade & base...

LEARN MORE



#### MARCH 30 CONSTRUCTION UPDATE

Sully-Miller will do: Curb & gutter concrete placement. Crossing installation. IMPORTANT...

LEARN MORE

Want to receive daily project progress updates?

FOLLOW US ON TWITTER!





**SCOPE OF WORK**

Following is the scope of work listed in City's RFP:

<i>Service</i>	<i>Function</i>	<i>Deliverables</i>
Pre-construction Conference	Outline project specifics. Inform contractor of project administration procedures.	Agenda meeting minutes
Management Information System (MIS)	Implement system for organizing, tracking, filing, and managing paper/electronic correspondence including letters, information requests, submittals, contracts, reports, O&M manuals, progress payments, and change orders, etc	Paper files, digital files, correspondence logs.
Review Traffic Controls Plans	Review contractor's plans for detours, shutdowns and access for emergency vehicles.	Review traffic control plan
Meetings	Conduct meetings to discuss, background, scope, objectives, schedule, current, and past issues as necessary.	Agenda meeting minutes
Issues Management	Analyze issues, seek appropriate advice, and give recommendations. Review cost reduction proposals as well as contractor's methods of construction in order to ensure compliance with plans and specifications and delivery of project within budget and the time specified.	Design clarifications. Contract change orders.
Schedule	Monitor contractor's schedule weekly. Notify parties of actual or potential deviation from schedule. Work with project team to correct noncompliance with schedule.	Schedule reports and recommendations of "As-built" schedule
Cost Control	Monitor project funding. Monitor project budgets. Review contract item payments, material quantities, and change order payments.	Budget reports and cost estimate reviews
Labor Compliance and any other services that are necessary to ensure full compliance with CDBG, federal, State and county requirements	Provide labor compliance report (s). Attend, present, and prepare meeting minutes for pre-construction conferences associated to CDBG requirements to contractors. Review and approve CDBG-related submittals. Prepare and assist the City with submission of any reporting documents required by federal, state and county agencies. Verify and document job-site posting of wage rate information and required labor compliance poster. Perform employee interviews on site as necessary for compliance. Review and approve weekly certified payroll and associated documents, and work with contractor to correct deficiencies in a timely manner. Keep a complete labor compliance file and provide to the City upon project completion.	Provide labor compliance report (s) to include reporting on prevailing wage, payroll documentation, compliance status, and certified payrolls.



Change Orders	Review potential change orders for contractual and technical merit. Prepare independent cost estimate and schedule analysis of work. Negotiate and prepare change orders for execution. Keep the City apprised of impact of cumulative change orders.	Independent review of cost estimate for change orders. Ready for execution of change order summary reports.
Dispute Resolution	Make recommendations and implement procedures for reducing the likelihood of disputes and claims. Assist in the resolution of disputes.	Dispute avoidance procedures and give recommendations
Quality Control/Inspection	Observe and monitor all aspects of project. Notify contractor when work is not in compliance. Prepare daily inspection reports. Provide photographic and video documentation of construction process. Encourage and stress quality in the constructed product. Provide materials testing services.	Photograph and videotapes project files
Public Relations	Communicate with local business community regarding temporary construction impacts, such as traffic changes, noise, limited access and construction schedule.	Verbal and written notices delivered to local businesses
Permit/Environmental Compliance	Review and enforce requirements stipulated in permits issued by regulatory and environmental agencies.	Daily inspection reports and correspondence
Progress Payments	Review and approve all contractor's payment request. Verify contractor pay items. Prepare payment documentation for execution.	Progress payment request documents
Monthly Status Reports	Prepare monthly reports highlighting project progress, CCO's, cost issues, and schedule.	Monthly report
Site Safety	Review and monitor contractor's safety program for compliance with Cal/OSHA. Notify contractor if unsafe condition is observed. Notify City if contractor refuses to rectify unsafe condition. Investigate accidents.	Accident reports and monthly reports.
"As-Built" Drawings	Collect, review, and transmit contractor's data to engineer.	Review data for accuracy for record drawings.
Final Walkthrough	Make final inspections, Prepare punch-list. Verify that required certificates of compliance, O&M manuals and as-built drawings have been delivered.	Punch list
Project Completion Report	Process final progress payment to contractor. File Notice of Completion. Prepare final report. Review project records	Final progress payment, Notice of Completion and Final report. Deliver project records to the City





---

## D. PROJECT SCHEDULE

---

City's RFP indicates the construction duration for this project is **30 working days**.

This is a requirement of bid specifications that the construction contractor is required to complete the construction of the project.

The construction contractor is required to prepare and submit a baseline schedule, which identifies the construction tasks, critical path, milestones, task duration and completion dates, work sequence and activity durations.

The construction schedule is part of contractor's means and methods, and as such he/she is responsible for the delivery of the project based on the approved schedule.

As Construction Manager, we monitor the schedule, and request the contractor to submit updates as necessary. We also request the contractor submit look-ahead schedules and other night-time, weekend or hour-by-hour schedules, if needed.

When significant activities show that they are slipping from the baseline, we work with the contractor to develop recovery plans.

In developing schedules all resources are used including but not limited to everything from checklists, spread sheets, bar charts, graphic schedules, linear scheduling techniques and of course the Critical Path Method.

Both Microsoft Project and P6 are commonly used as the primary software in the development of CPM schedules. The schedule is a living and constantly evolving entity.

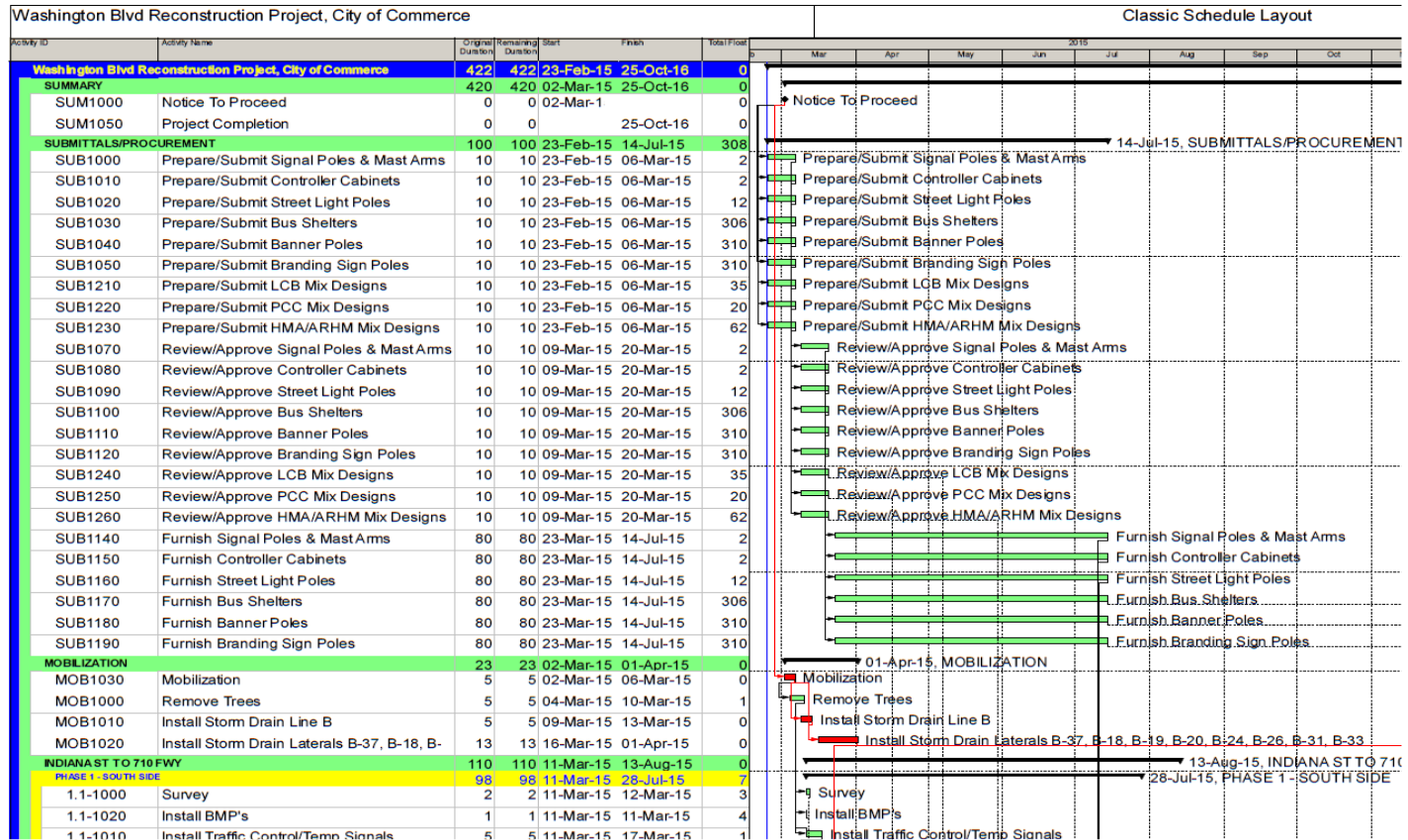
On larger and complex projects, "fully loaded" schedules on Primavera can be used. However, smaller contractors may not have the sophistication, capability and resources of using Primavera. Also, if Primavera is used, the City would be required to have necessary license as well to be able to open and evaluate Primavera files. It is likely that the majority of the contractors will provide schedules in MS Schedule Format.

Following are samples of project schedules that we use.

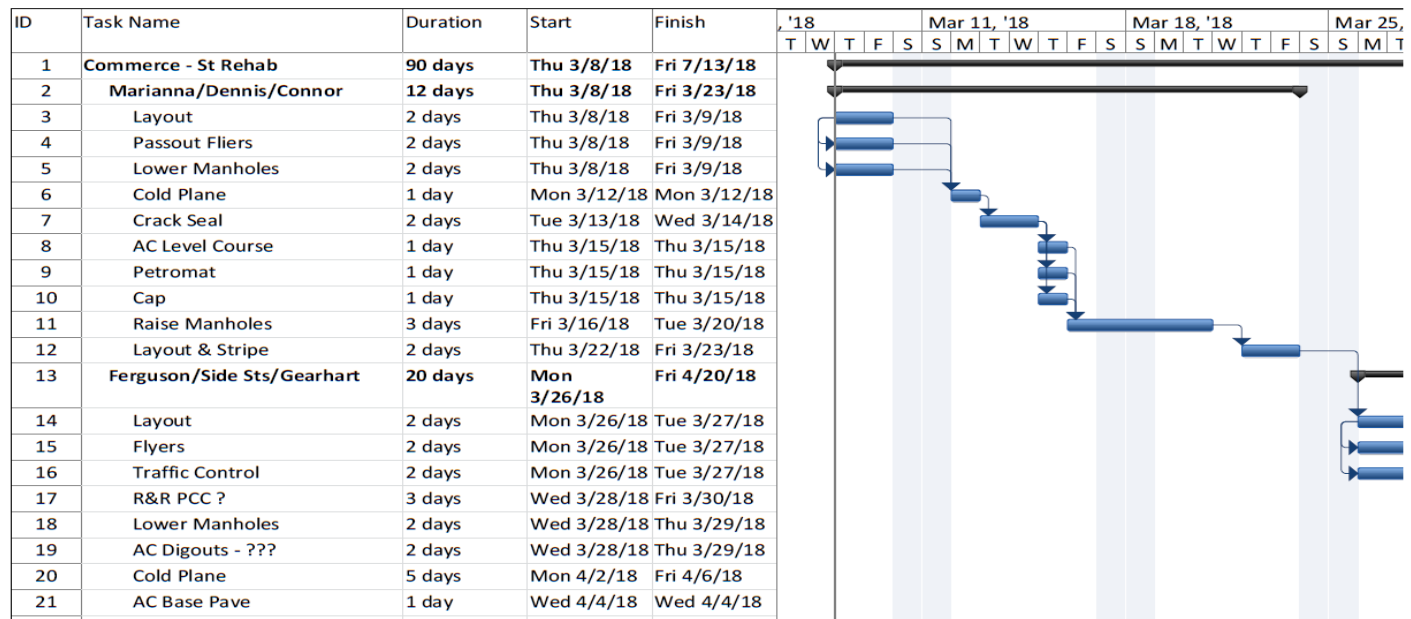




**Sample 1-Primavera Schedule:** This schedule was prepared for the Washington Boulevard Widening and Reconstruction Project in the City of Commerce. The project is federally funded with a total project budget was \$38M. The project was competed in multiple phases and in a segmented approach to minimize the impacts of construction on public traffic and adjacent properties.



**Sample 2-MS Project Schedule:** This schedule was prepared for Garfield Avenue reconstruction with FDR, and 5 other streets for cold-mill and overlay rehabilitation with a total project budget was \$5M.

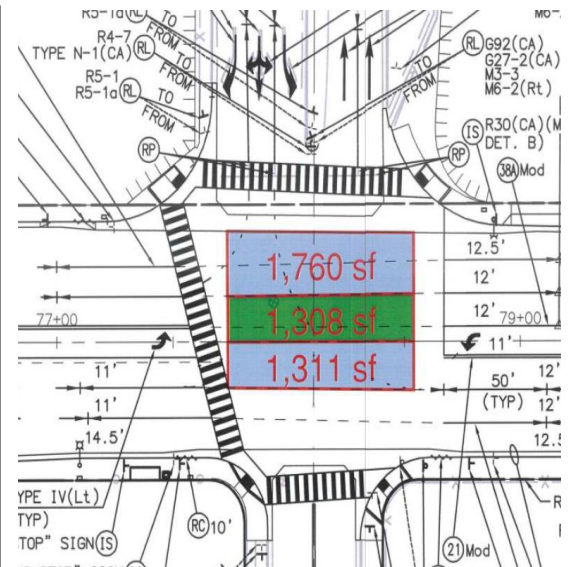


## Sample 3-Week Look-Ahead Schedule

Activity ID	Activity Description	Durat	Start	Finish	Resp	MON 3/27	TUE 3/28	WED 3/29	THU 3/30	FRI 3/31	SAT 4/1	SUN 4/2	MON 4/3	TUE 4/4	WED 4/5	THU 4/6	FRI 4/7	SAT 4/8	SUN 4/9	MON 4/10	TUE 4/11	WED 4/12	THU 4/13	FRI 4/14	SAT 4/15	SUN 4/16
<b>Milestones / Summary</b>																										
SUM1000	Notice To Proceed	420d	20-Apr-15		COM																					
SUM1050	Substantial Completion	0d		5-May-17	COM																					
<b>710 Fwy Area</b>																										
<b>Phase 1 - South Side</b>																										
	Install Temporary Traffic Signals				HLE																					
	Grade for Sidewalk				S-M										D	D										
	Place Sidewalk				S-M											D	D									
	Install Crossing at Hepworth				HLE																					
	Install Foundations				HLE	N	N																			
	Install Conduit & Pull Boxes				HLE	N	N																			
	Stand Street Light Poles				HLE										N											
<b>Phase 2 - Center</b>																										
	Survey				WMB																					
	Sawcut				S-M		D																			
	Concrete Removals				S-M		D	D		N																
	Roadway Excavation				S-M		D	D	D	N	D															
	Grade for Roadway				S-M			D		N	D															
	Place Base				S-M			D			D															
	Install Conduit Crossings				HLE		N			N																
	Install LCB-RS				S-M						D															
	Form & Layout Baskets				S-M						D/N															
	Install JPCP-RS				S-M							D														
	Strip Forms				S-M							D														
<b>Phase 3 - North Side</b>																										
	Install Traffic Control				S-M						N															
	Survey				WMB							D														
	Sawcut				S-M			N																		
	Concrete Removals				S-M							D/N														
	Roadway Excavation				S-M							D/N														
	Grade for Roadway				S-M								D/N													
	Place Base				S-M								D/N													
	ADL Removal				S-M										D											
	Install Conduit Crossings				HLE								N													
	Place C&G				S-M									D	D											
	Install Catch Basin B				Covarrubias									D	D											
	Place Cross Gutter Spandrels				S-M											D										
	Install Conduits				HLE									N	N	N				N	N	N				
	Install Pole Foundations				HLE																N					
	Install LCB				S-M									D		D				D						
	Form & Layout Baskets				S-M																		D			

## Sample Hour by Hour Schedule for night-time and weekend work

Time	Activity	Quantity	Location	Responsibility
<b>Friday, April 28</b>				
7:00 PM	Set Detour			Grade Crew
8:00 PM	Close Ramps		Blue & Green	Grade Crew
8:30 PM	Break PCC		Blue & Green	Grade Crew
9:30 PM	Unclassified Excavation	448 CY	Blue & Green	Grade Crew
<b>Saturday, April 29</b>				
2:00 AM	Compaction Testing		Blue & Green	Geo-Advantec
5:00 AM	Form/ Setup LCB		Blue & Green	PCC Crew
5:00 AM	Drill/Bond Dowels/ Tie bars		Blue & Green	PCC Crew
6:00 AM	Place RS-LCB	130 CY	Blue & Green	PCC Crew
9:00 AM	Complete LCB		Blue & Green	PCC Crew
9:00 AM	Form JPCP/Place Baskets/Place			
	Bond-Breaker	370 LF	Green	PCC Crew
1:00 PM	Place Pavement	93 CY	Green	PCC Crew
2:00 PM	Green Saw		Green	
3:00 PM	Complete Pavement		Green	PCC Crew
4:00 PM	Strip Forms	370 LF	Green	Grade Crew
<b>Sunday, April 30</b>				
	Form JPCP/Place Baskets/Place			
6:00 AM	Bond-Breaker	370 LF	Green	PCC Crew
8:00 AM	Place Pavement	225 CY	Blue	PCC Crew
11:00 AM	Green Saw		Blue	
3:00 PM	Complete Pavement		Blue	PCC Crew
8:00 PM	Remove Closure/ Detour		Blue & Green	Grade Crew





---

**E. DBE USE**

---

**DBE SUBCONSULTANT (CDBG Labor Compliance)**

---

For this project, Transtech Team includes the following expert consulting firms for Materials Testing and Inspection:

- AVANT-GARDE (DBE Firm); [www.agi.com.co](http://www.agi.com.co); CDBG Labor Compliance.







---

**F. CONTRACT**

---

If selected by the City, we request for the City Attorney and our legal representative to work together on the following items for a mutually agreed upon language.

### RECITALS

- A. The City desires to obtain professional services from the Consultant for \_\_\_\_\_.
- B. The City does not have the personnel able and/or available to perform the services required under this agreement and therefore, the City desires to contract for consulting services to accomplish this work.
- C. The Consultant <sup>represents</sup> ~~warrants~~ to the City that it has the qualifications, experience and facilities to perform properly and timely the services under this Agreement.

### 12. INDEMNIFICATION.


- A. CONSULTANT shall indemnify, ~~defend with counsel approved by CITY,~~ and hold harmless CITY, its officers, officials, employees and volunteers from and against all liability, loss, damage, expense, and cost (including without limitation <sup>reimbursement of</sup> reasonable attorneys fees, expert fees and all other costs and fees of litigation) <sup>to the extent</sup> ~~of every nature arising from third party claims that are out of or in connection with~~ CONSULTANT's negligent or wrongful performance of work hereunder or its failure to comply with any of its obligations contained in this AGREEMENT, ~~regardless of CITY'S passive negligence,~~ but excepting such loss or damage which is caused by the ~~sole active~~ negligence or willful misconduct of the CITY. ~~Should CITY in its sole discretion find CONSULTANT'S legal counsel unacceptable, then~~ CONSULTANT shall reimburse the CITY its costs of defense, <sup>as part of City's total damages based upon Consultant's proportionate percentage of fault as determined by a court of competent jurisdiction</sup> including without limitation reasonable attorneys fees, expert fees and all other costs and fees of litigation. ~~The CONSULTANT shall promptly pay any final judgment rendered against the CITY (and its officers, officials, employees and volunteers) covered by this indemnity obligation. It is expressly understood and agreed that the foregoing provisions are intended to be as broad and inclusive as is permitted by the law of the State of California and will survive termination of this Agreement.~~
- B. The requirements as to the types and limits of insurance coverage to be maintained by CONSULTANT as required by Section 17, and any approval of said insurance by CITY, are not intended to and will not in any manner limit or qualify the liabilities and obligations otherwise assumed by CONSULTANT pursuant to this Agreement, including, without limitation, to the provisions concerning indemnification.
- C. Except to the extent of an indemnification obligation set forth herein, to the maximum extent allowable under applicable law, CITY agrees that



4. Professional Liability Coverage. The CONSULTANT shall maintain professional errors and omissions liability insurance for protection against claims alleging negligent acts, errors, or omissions which may arise from the CONSULTANT'S operations under this Agreement, whether such operations are by the CONSULTANT or by its employees, ~~subcontractors, or subconsultants~~. The amount of this insurance shall not be less than one million dollars (\$1,000,000) on a claims-made annual aggregate basis, or a combined single-limit-per-occurrence basis. When coverage is provided on a "claims made basis," CONSULTANT will continue to renew the insurance for a period of three (3) years after this Agreement expires or is terminated. Such insurance will have the same coverage and limits as the policy that was in effect during the term of this Agreement, and will cover CONSULTANT for all claims made by CITY arising out of any errors or omissions of CONSULTANT, or its officers, employees or agents during the time this Agreement was in effect.

- B. Endorsements. Each general liability, automobile liability and professional liability insurance policy shall be issued by a financially responsible insurance company or companies admitted and authorized to do business in the State of California, or which is approved in writing by City, and shall be endorsed as follows. CONSULTANT also agrees to require all contractors, and

CITY agrees that Section 17.B.1., 17.B.2. and 17.B.3. shall not apply to Professional Liability or Workers' Compensation subcontractors to do likewise. ^

1. "The CITY, its elected or appointed officers, officials, employees, agents, and volunteers are to be covered as additional insureds with respect to liability arising out of work performed by or on behalf of the CONSULTANT, including materials, parts, or equipment furnished in connection with such work or operations."
2. This policy shall be considered primary insurance as respects the CITY, its elected or appointed officers, officials, employees, agents, and volunteers. Any insurance maintained by the CITY, including any self-insured retention the CITY may have shall be considered excess insurance only and shall not contribute with this policy.
3. This insurance shall act for each insured and additional insured as though a separate policy had been written for each, except with respect to the limits of liability of the insuring company.
4. The insurer waives all rights of subrogation against the CITY, its elected or appointed officers, officials, employees, or agents.
5. Any failure to comply with reporting provisions of the policies shall not affect coverage provided to the City, its elected or appointed officers, officials, employees, agents, or volunteers.
6. The insurance provided by this policy shall not be suspended, voided, canceled, or ~~reduced in coverage or in limits~~ ept after thirty (30) days written notice has been received by the CITY. ^

A ten (10) day written notice to CITY shall apply to non-payment of premium. CONSULTANT shall provide thirty (30) days written notice to CITY prior to implementation of a reduction of limits or material change of insurance coverage as specified herein.



32. ATTORNEY'S FEES. The parties hereto acknowledge and agree that each will bear his or its own costs, expenses and attorneys' fees arising out of and/or connected with the negotiation, drafting and execution of the Agreement, and all matters arising out of or connected therewith except that, in the event any action is brought by any party hereto to enforce this Agreement, the prevailing party in such action shall be entitled to reasonable attorney's fees and costs ~~in addition to all other relief~~ to which that party or those parties may be entitled.

as part of prevailing party's total damages attributable to the non-prevailing party's proportionate percentage of fault as determined by a court of competent jurisdiction





Following is our estimated fee breakdown:

FEE PROPOSAL TO PROVIDE CONSTRUCTION MANAGEMENT & INSPECTION SERVICES (RFP 18-09, CIP #17-687; CDBG No. 601869-17)			CM, Sr. Eng, PM Hours			Inspection Hours			Office Engineer Hours			Tot Hrs	Total Fee
			Hrs	Hrly Billing Rate	Total Fee	Hrs	Hrly Billing Rate	Total Fee	Hrs	Hrly Billing Rate	Total Fee		
Pre-construction Phase			4	\$175	\$700	4	\$115	\$460	4	\$100	\$400	12	\$1,560
Construction Phase-Field Construction NOTE: Per RFP, Field Construction Duration is specified as 80 working days. Our fee is based on this duration.	30	work days	30	\$175	\$5,250	180	\$115	\$20,700	30	\$100	\$3,000	240	\$28,950
Project Close-out			5	\$175	\$875	5	\$115	\$575	5	\$100	\$500	15	\$1,950
Totals			39		\$6,825	189		\$21,735	39		\$3,900	267	\$32,460
PLUS ESTIMATED BUDGET FOR: AVANT-GARDE (DBE Firm); www.agi.com.co; CDBG Labor Compliance												12.36%	\$5,000
PLUS ESTIMATED BUDGET FOR: GEO-ADVANTEC, INC.: Sub Consultant (Materials Testing and Inspection); www.geoadvantec.com												7.41%	\$3,000
FEE													\$40,460
NOTE: The above fees are based on 30 working day construction duration. If the construction duration extends beyond 30 working days, or City desires longer than 8 hr daily construction work hours, or night work, or weekend work, such additional effort would be billed based on actual additional hours and applicable billing rates.													
NOTE: The inspection hours during Construction Phase is assumed to be 6 hours average per day for 30 working days. This is based on the assumption that there may be some working days, which full day inspection (8 hours) may not be required such as mobilization/demobilization, striping, etc.													

