

LIGHTING DESIGN CONCEPTS & SECURITY SOLUTIONS

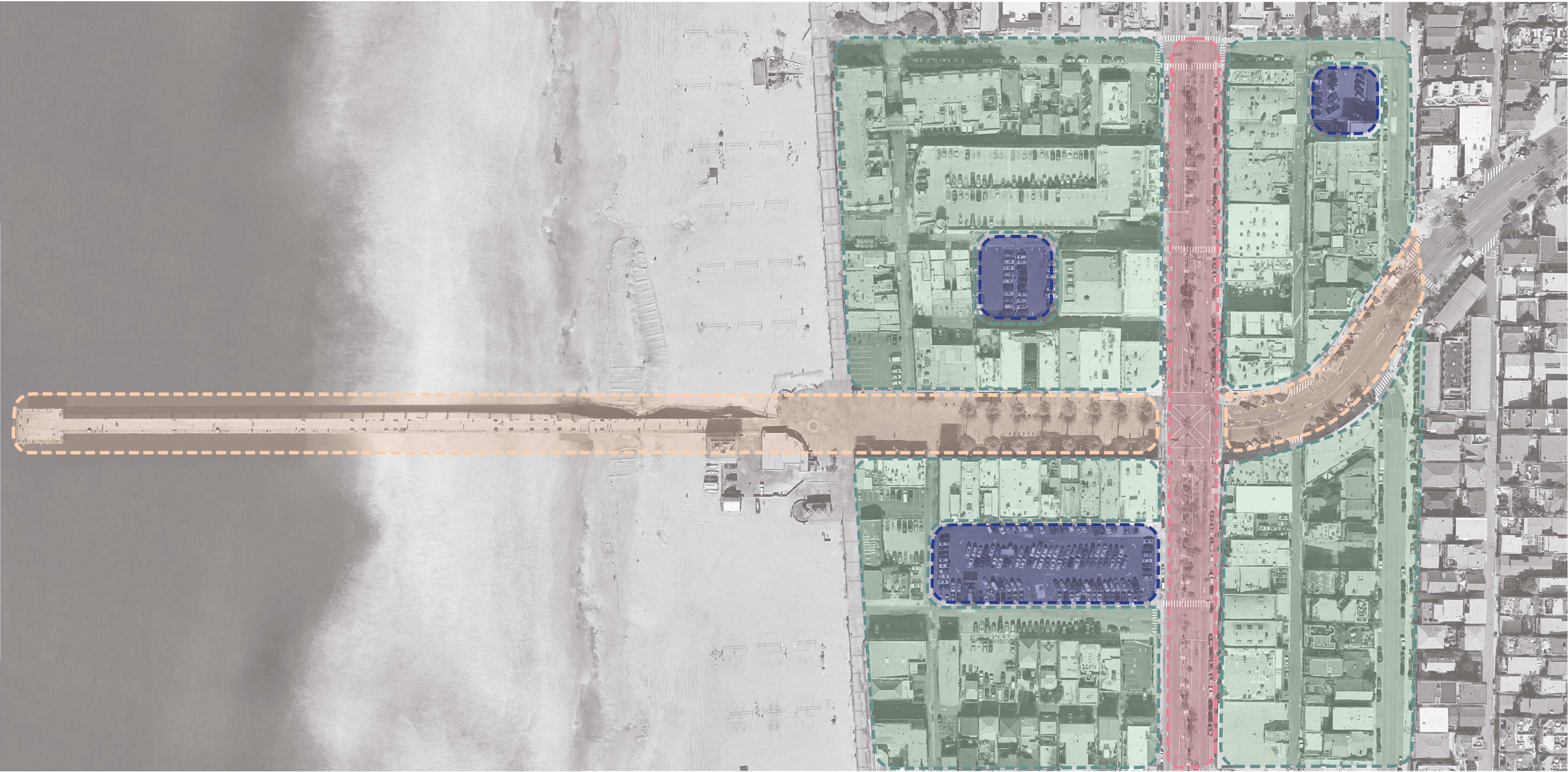
Hermosa Beach

01/30/2018

DESIGN CONSIDERATIONS

- SECURITY -** New lighting will illuminate dark areas of downtown Hermosa Beach, creating uniform lighting and allowing light levels to be raised and lowered as required for security. Additionally, the creation of uniform lighting levels allows for proper operating conditions for video surveillance cameras to be added now or in the future.
- PLACEMAKING -** Express unique identity of Hermosa Beach and distinguish it from neighboring beach cities.
- MAINTENANCE -** A combination of long-lasting lamp sources like LEDs, and appropriately located fixtures means lowering the long-term maintenance costs. Low energy sources will be utilized throughout the site, which, together with a control system, will reduce energy use on an ongoing basis. The light sources will also be reduced to a few standard fixtures to ensure consistent color temperature and quality.

SECURITY LIGHTING GOALS



- 1

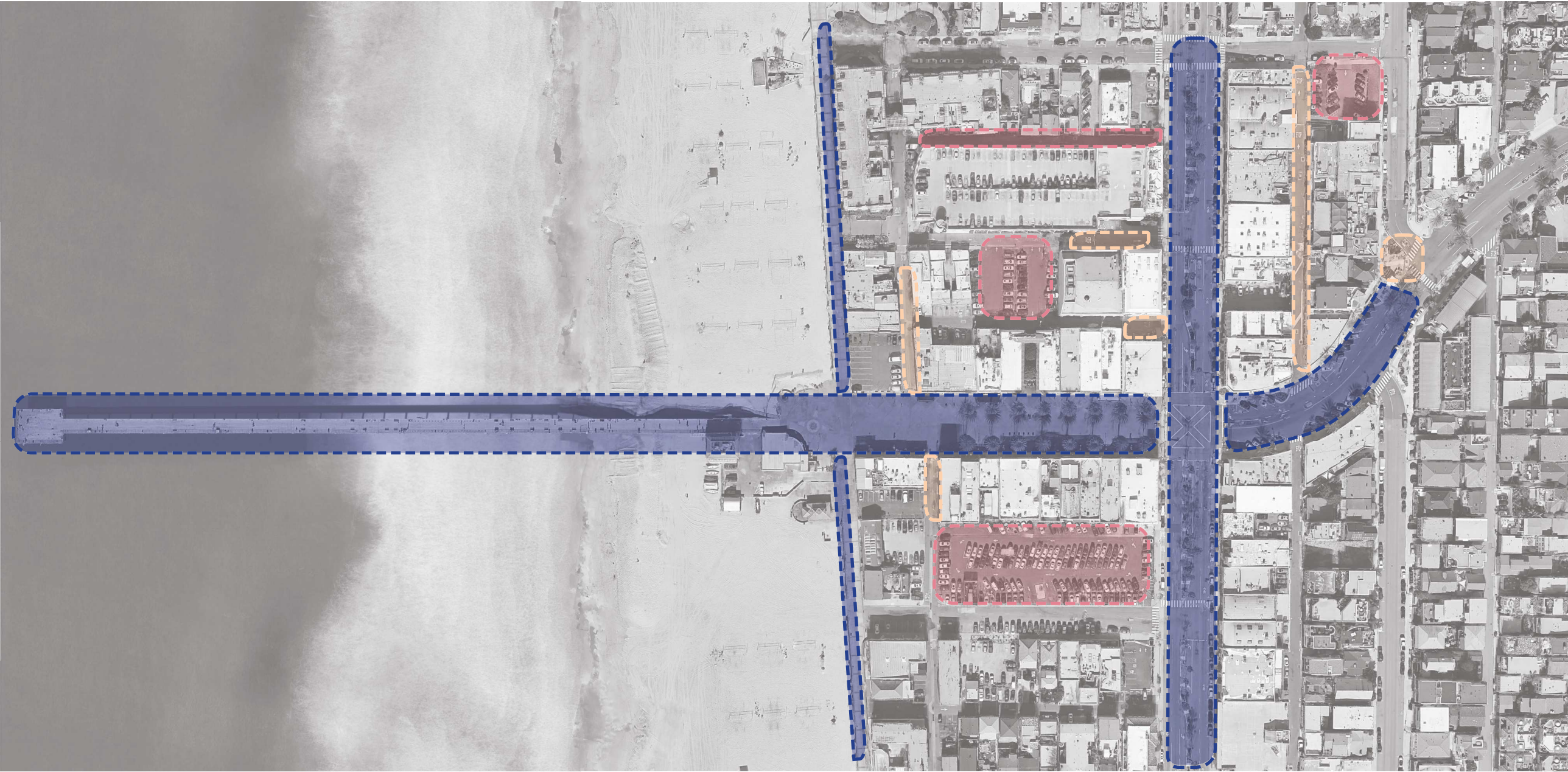
Pier/ Pier Ave:
Add lights to dark areas along Pier Avenue and provide a permanent security lighting solution at Pier Plaza.
- 2

Hermosa Ave:
Dim the existing pole tops to allow the placemaking lighting to have more effect earlier in the evening. Later in the night increase light levels to security lighting standard.
- 3

Parking Lots:
Provide consistent lighting standards and light level to make the parking lots feel safe, secure and comfortable.
- 4

Mixed Area:
Brighten the dark areas of concern with a standard series light fixture with consistent color and quality to achieve proper security measures and lighting conditions.

SECURITY PRIORITY AREAS



1 Immediate Action:
High security concern areas that should be prioritized as first step of action.

2 Secondary Action:
Areas are in need of updated fixtures but current lighting solution provides sufficient light.

3 Long Term:
A lighting design that is aesthetically pleasing can highlight the fact that the city is cared for, well maintained and managed with it's people in mind. the long term lighting goal is establish a sense of place unique to Hermosa Beach that helps the people feel that the city is thier own.

CRIME PREVENTION THROUGH ENVIRONMENTAL DESIGN



Maintenance and management are related to invoking a sense of pride and investment within the area so people feel the city is their own, which naturally encourages them to protect the space. This is known to be related to the reduction in opportunities for aberrant or criminal behavior such as vandalism and public urination. A lighting design that is aesthetically pleasing can highlight the fact that the city is cared for, well maintained and managed with its people in mind.

PIER AVENUE



 EXISTING POLE LOCATIONS
WITH NEW FIXTURE HEAD

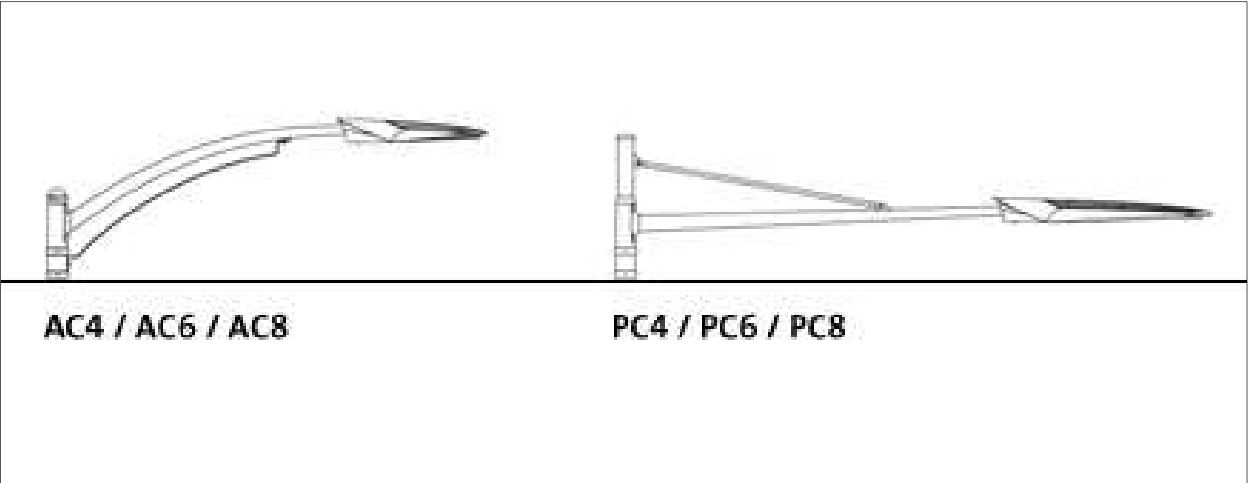
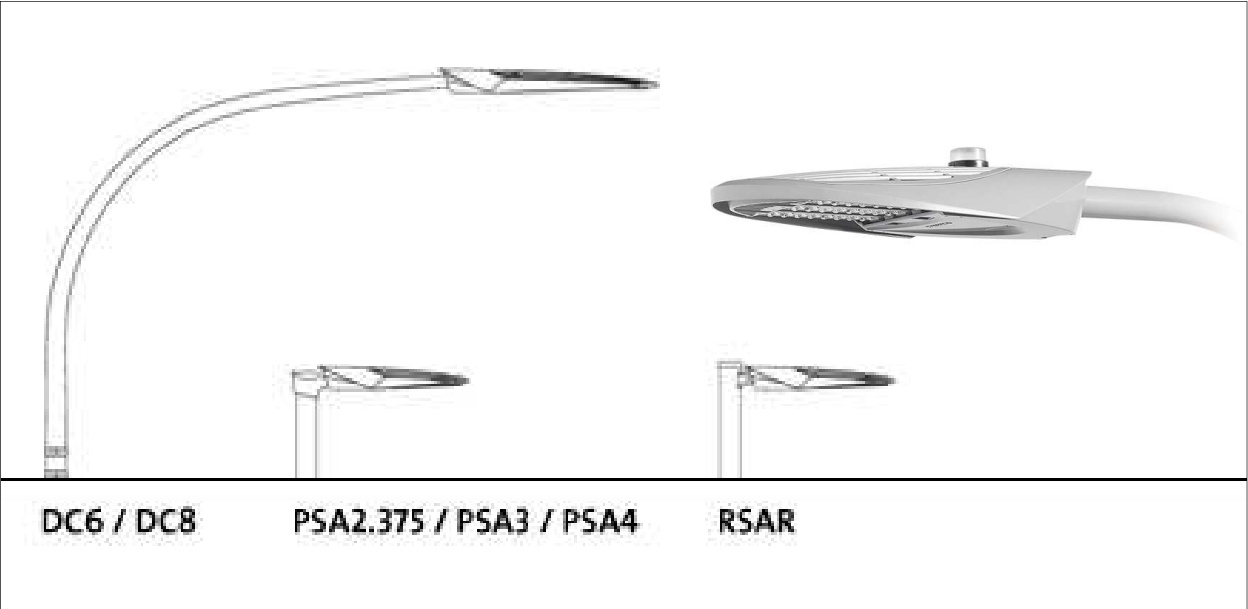
Existing Lighting Layout

Roadway Centerline: 0.07 fc
Pole Height: 18'
Very dark

New Lighting Layout

Roadway Centerline: 0.5 fc
Pole Height: 25'
Increased even light levels

Keep current pole locations but update fixtures. New fixtures have a higher lumen output and are available in a variety of pole mounting options.



CORNER OF PIER AND MANHATTAN



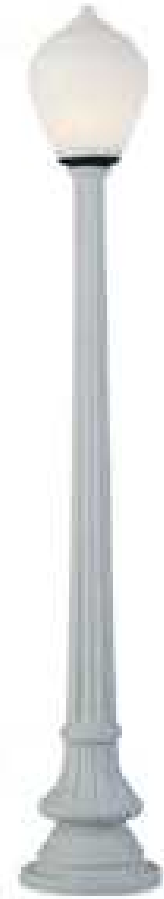
 NEW POLES

Existing Lighting Layout

Pocket Garden: 0.01-0.04 fc
Pole Height: N/A
Dark, with spots of light

New Lighting Layout

Pocket Garden: 2+ fc
Pole Height: 10'
Increased light levels



New pole fixture can house multiple light sources, each light source can illuminate a 12' diameter circular area. This fixtures can be placed at crosswalks and pocket gardens to provide Hermosa visual identity and improve pedestrian lighting.

ALLEYWAYS 13TH CT



- NEW FIXTURES
- MURAL SPECIFIC FIXTURE

Fixture locations are approximations. Use pre-existing fixture where possible through coordination with owners. Where there are no pre-existing fixtures use Hermosa standard wall pack. Fixtures to illuminate mural and alleyway.

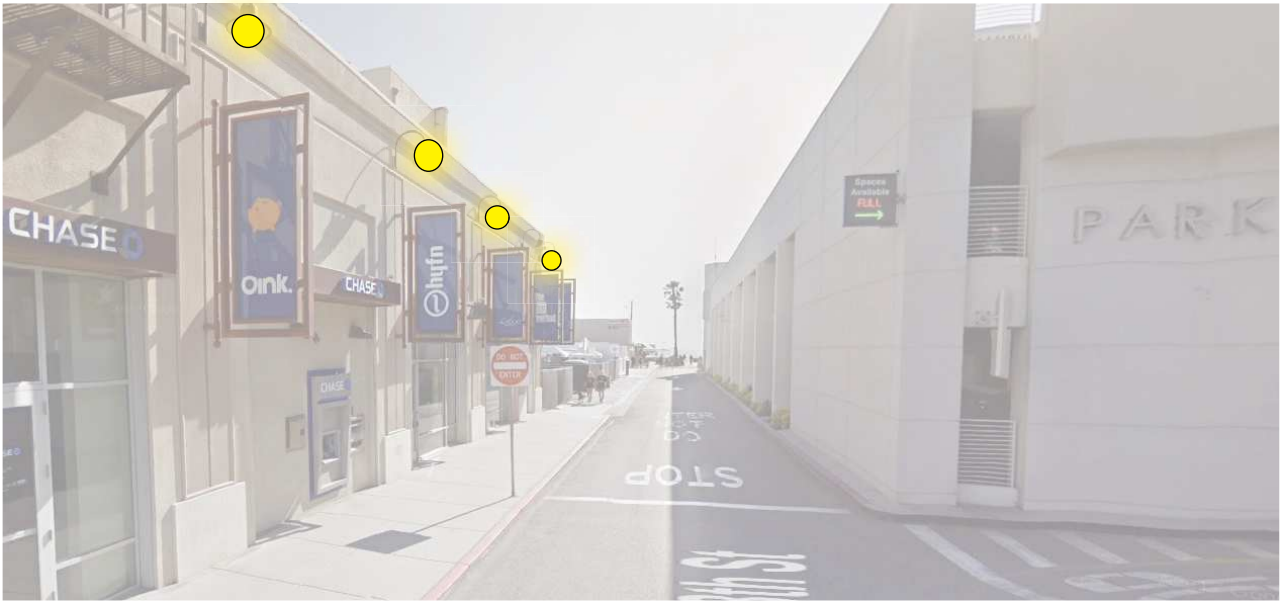


ALLEYWAYS 13TH ST




- NEW FIXTURES
- EXISTING UNUSED POLE FIXTURES

Wall pack solution can be used here to increase light levels. There is also the opportunity to coordinate with building owner to have all unused fixtures illuminated at night.



ALLEYWAY BEACH DR.



	NEW FIXTURES	Existing Lighting Layout	New Lighting Layout
		Max: 3 fc	Max: 9.4 fc
		Avg: N/A	Avg: 5.06 fc
		Height: 8'	Height: 15'
		Very dark	Even lighting throughout

Lighting calculations developed from AGI 32. Existing site lighting conditions taken from footcandle readings on site. New fixtures will be mounted with even spacing to ensure homogenous lighting.



Use pre-existing fixture where possible through coordination with owners. Where there are no pre-existing fixtures use Hermosa standard wall pack.

ALLEYWAYS BEACH DR.



- HERMOSA STANDARD WALL PACK
- MURAL SPECIFIC FIXTURE

Fixture locations are approximations. Use pre-existing fixture where possible through coordination with owners. Where there are no pre-existing fixtures use Hermosa standard wall pack. Fixtures to illuminate mural and alleyway.



ALLEYWAYS PALM DR.



● NEW FIXTURES

Fixture locations are approximations. Use pre-existing fixture where possible through coordination with owners. Where there are no pre-existing fixtures use Hermosa standard wall pack.



THE STRAND

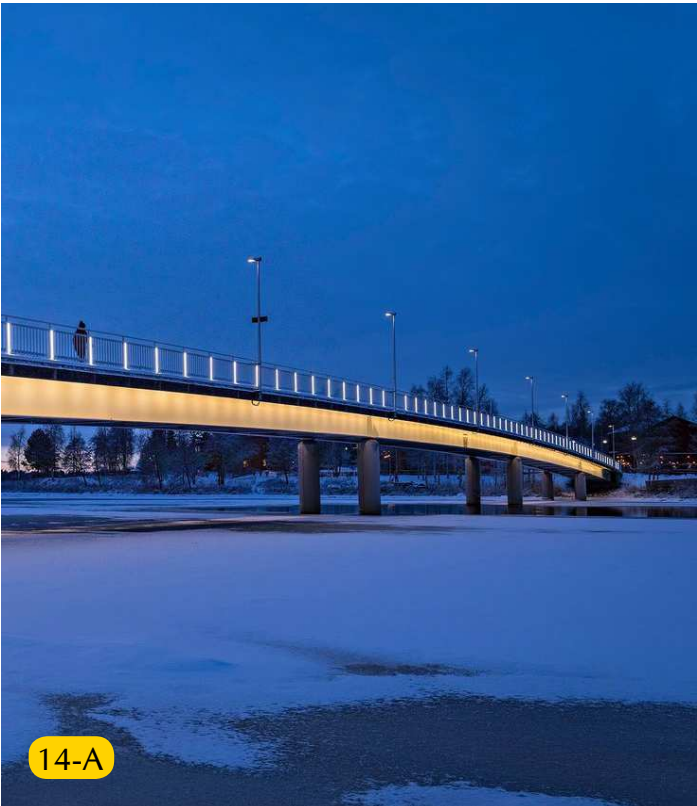


● EXISTING POLE LOCATIONS

Update existing pole fixtures to Hermosa standard to create a single cohesive Strand experience. This diagram is representative of the 12 pole fixtures that extend six North and six South of Pier Plaza.



HERMOSA PIER



14-A Underlit pier during early evening hours/ photo hours.

14-B DLC Bollard option.

14-C Bega Bollard option.





14-B



14-C

PARKING A





	NEW POLES	Existing Lighting Layout	New Lighting Layout
	EXISTING POLE LOCATIONS WITH NEW FIXTURE HEAD	Max: 15 fc	Max: 10.7 fc
		Avg: N/A	Avg: 5.25 fc
		Pole Height: 32'	Pole Height: 20'
		Spots of light	Even lighting throughout

Lighting calculations developed from AGI 32. Existing site lighting conditions taken from footcandle readings on site. In addition to the new poles, the existing pole layout will be kept but fixture heads should updated.



PARKING B

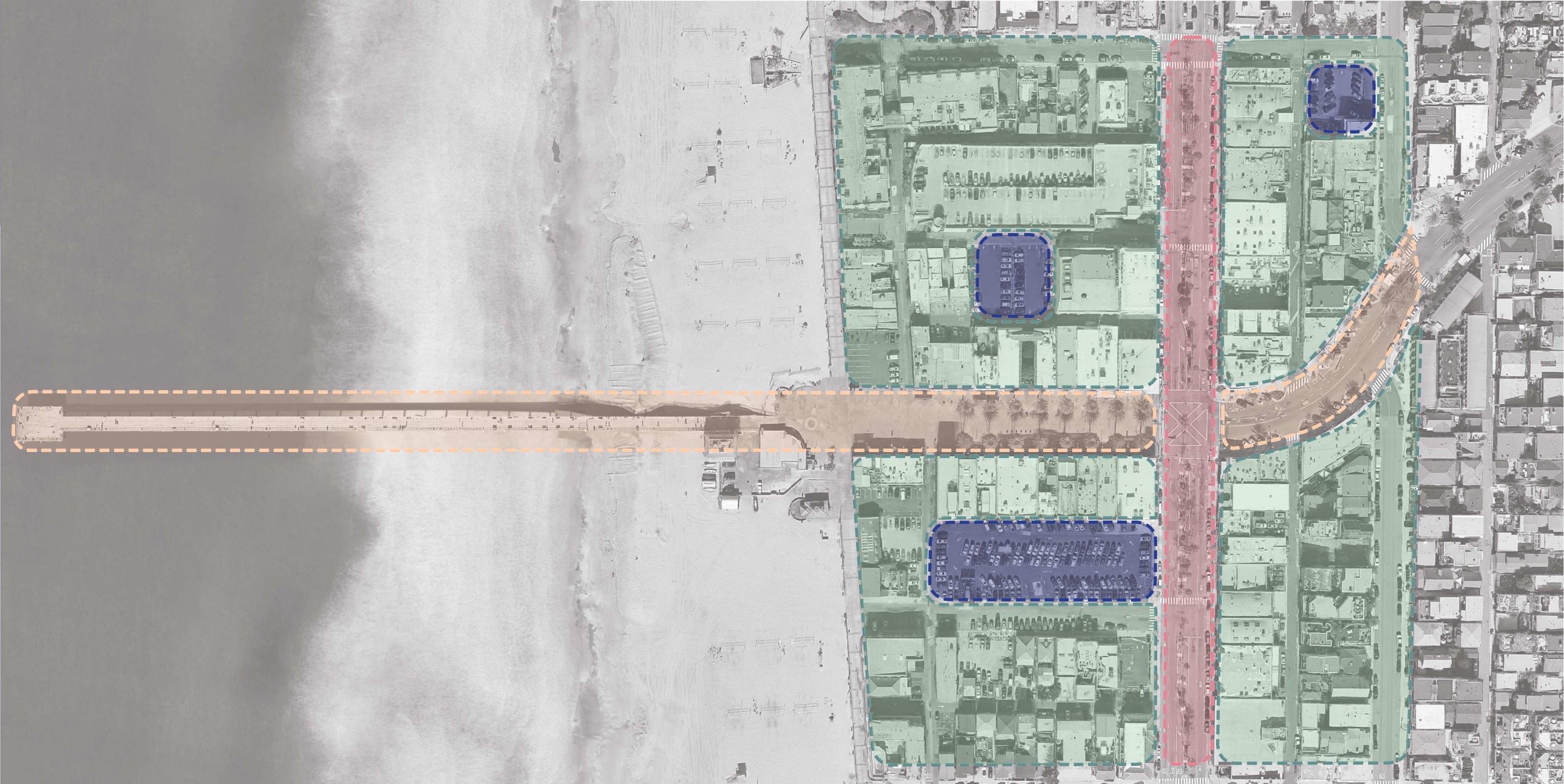


	NEW POLES	Existing Lighting Layout	New Lighting Layout
	EXISTING POLE LOCATIONS WITH NEW FIXTURE HEAD	Max: 3 fc	Max: 7.7 fc
		Avg: N/A	Avg: 2.29 fc
		Pole Height: 32'	Pole Height: 15'
		Spots of light	Even lighting throughout

Lighting calculations developed from AGI 32. Existing site lighting conditions taken from footcandle readings on site. In addition to the new poles, the existing pole layout will be kept but fixture heads should updated.



PLACEMAKING LIGHTING GOALS



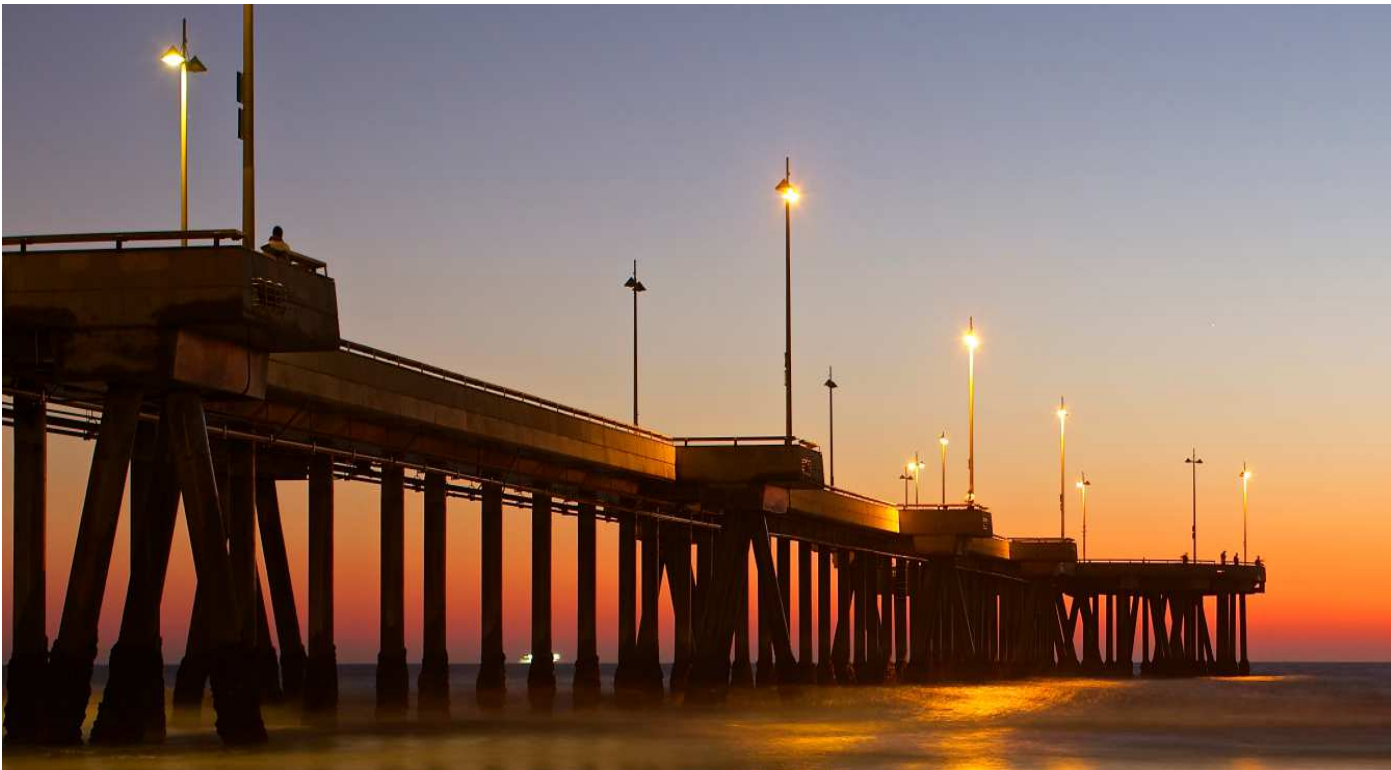
1 Pier/ Pier Ave:
Create a unique lighting design that expresses the character of Hermosa Beach in a cohesive experience that begins on Pier Avenue near PCH and continues all the way to the Pier.

2 Hermosa Ave:
Add decorative lighting to signal the approach of Hermosa Beach Downtown and make it more pedestrian friendly and inviting.

3 Parking Lots:
Provide consistent lighting standards and light levels to make the parking lots feel safe, secure and comfortable.

4 Mixed Area:
Provide individual solutions that compliment the character of each area.

NEIGHBORING PIER LIGHTING



NEIGHBORING IONIC SIGNAGE



NEIGHBORING STRING LIGHT INSTALLATIONS



VINTAGE HERMOSA BEACH IDENTITY



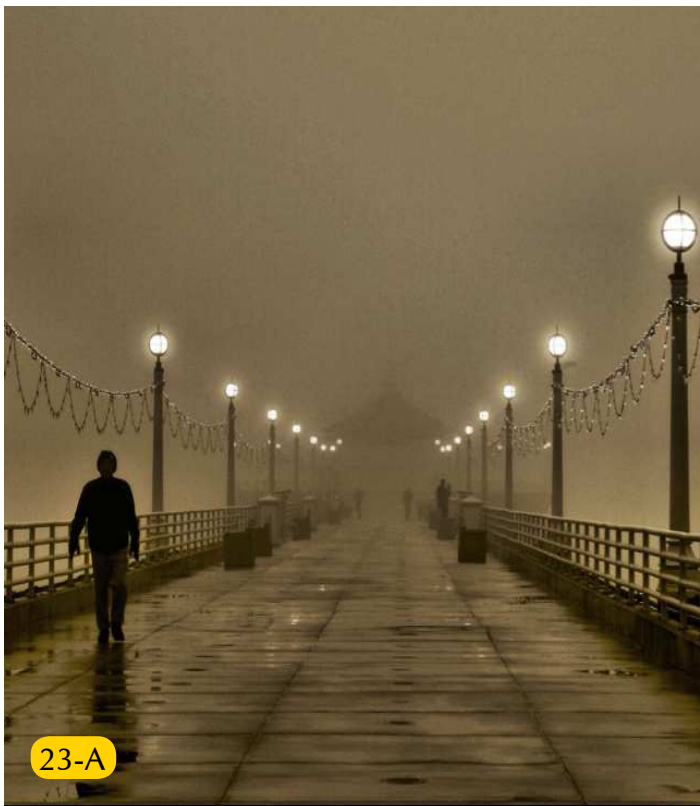
OPTION 1: VINTAGE HERMOSA



VINTAGE HERMOSA PLAZA LIGHTING



- 23-A Acorn fixtures provide decorative lighting for pedestrians and soft light to dining terraces.
- 23-B Metal ring with up and downlights will illuminate palm fronds and trunk.
- 23-C String lights attached to the metal ring are same as the existing string lights.



VINTAGE HERMOSA PLAZA SECURITY



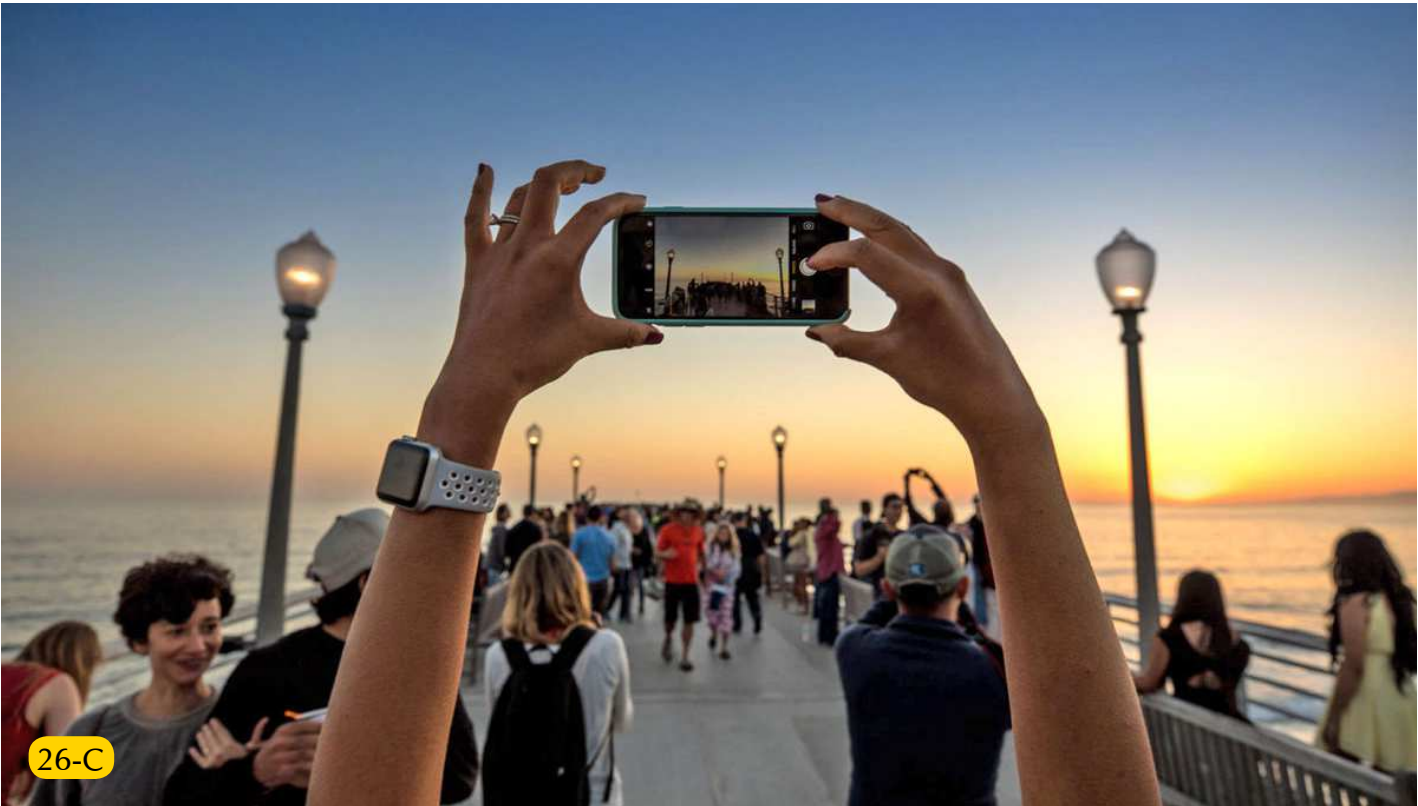
- 24-A String lights will provide low level ambient lighting.
- 24-B Dimmable catenary fixture will provide additional lighting for security and surveillance. Multiple options available for fixture shape and size.



VINTAGE HERMOSA



VINTAGE HERMOSA PIER LIGHTING



- 26-A Bollard option 1 - Hubbell Kick Bollard
- 26-B Bollard option 2 - Bega 99 558
- 26-C Acorn lights for temporary event lighting.



MODERN HERMOSA BEACH IDENTITY



OPTION 2: MODERN HERMOSA



OPTION 2: MODERN HERMOSA



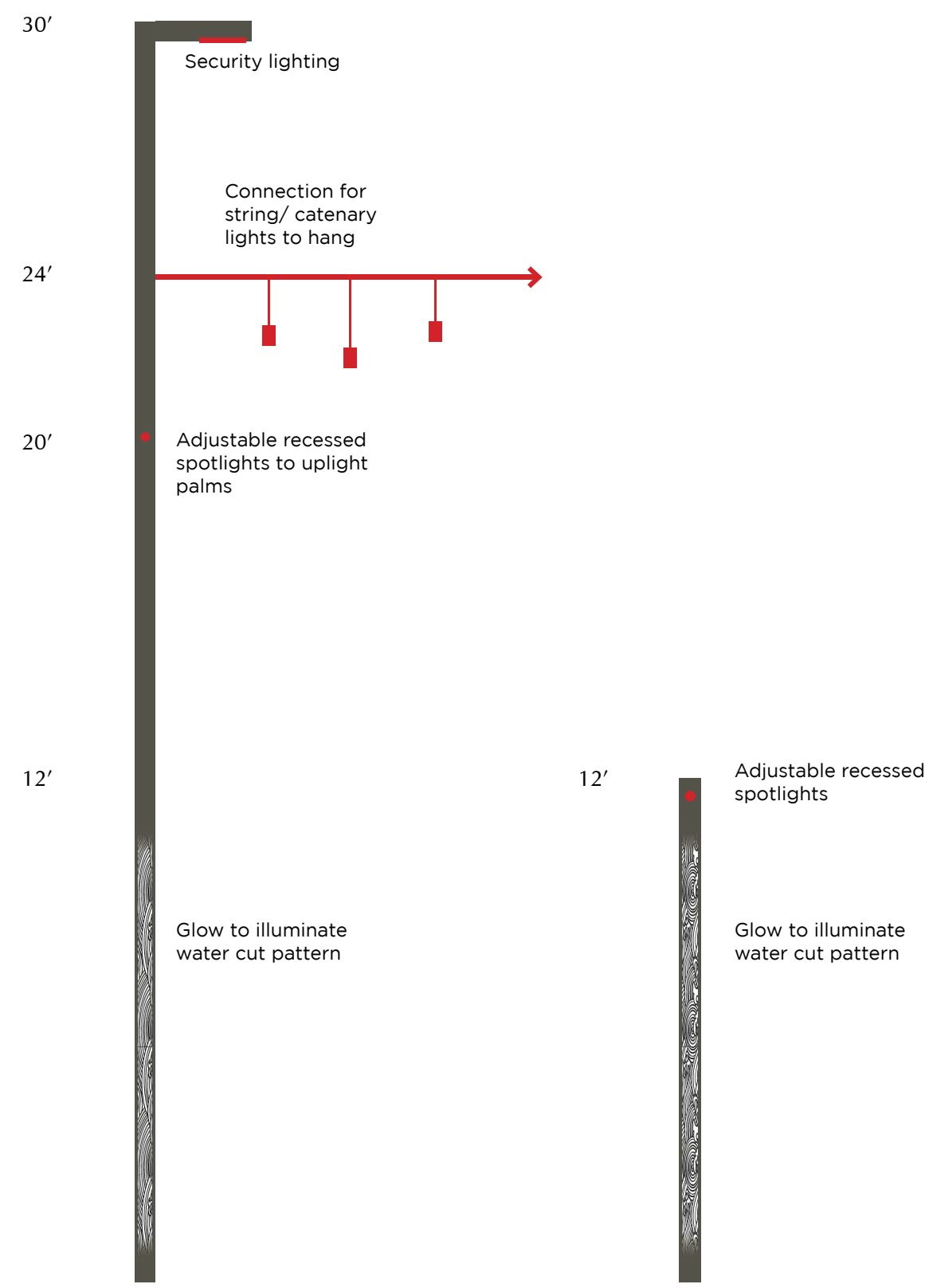
OPTION 2: MODERN HERMOSA



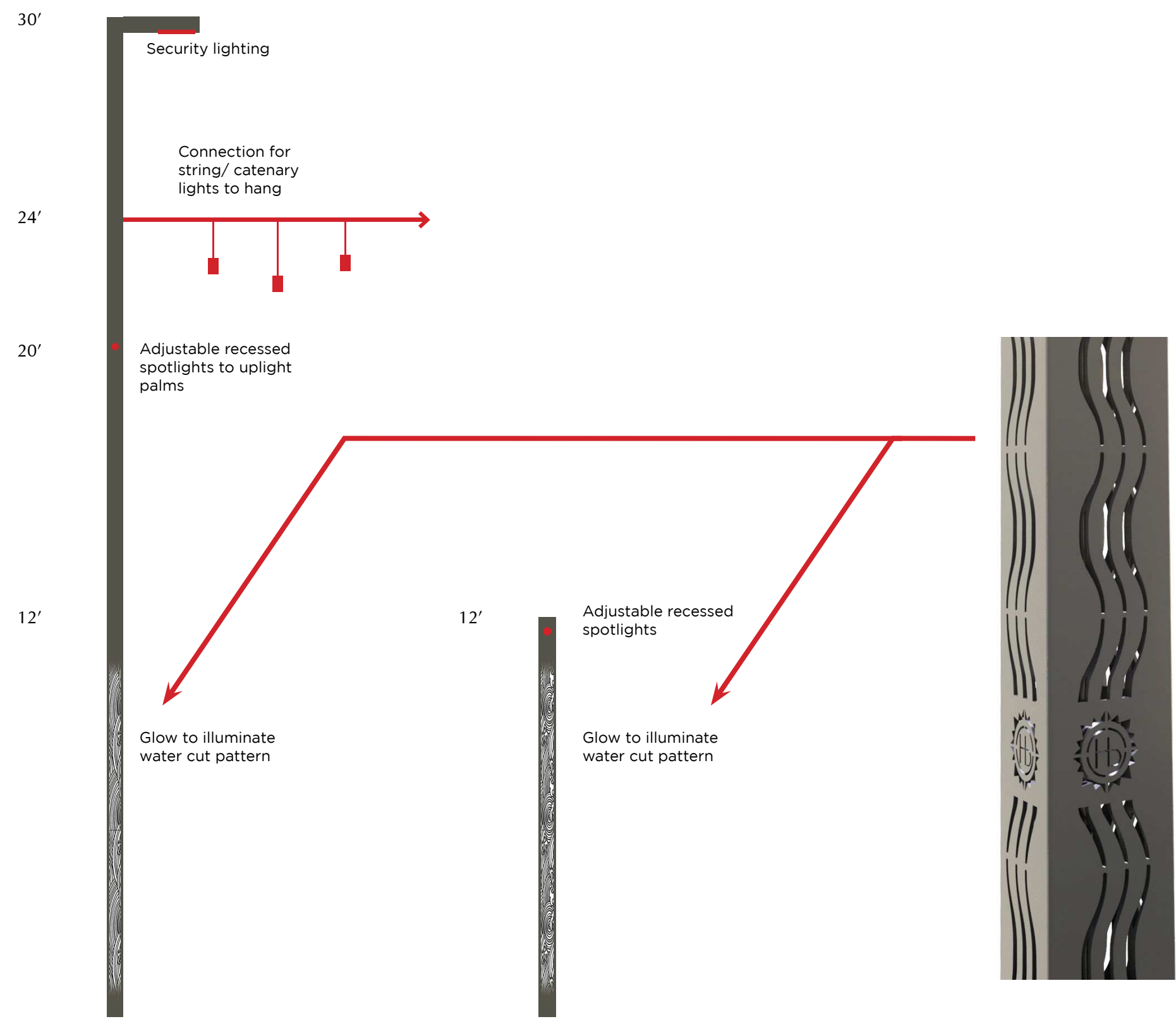
OPTION 2: MODERN HERMOSA



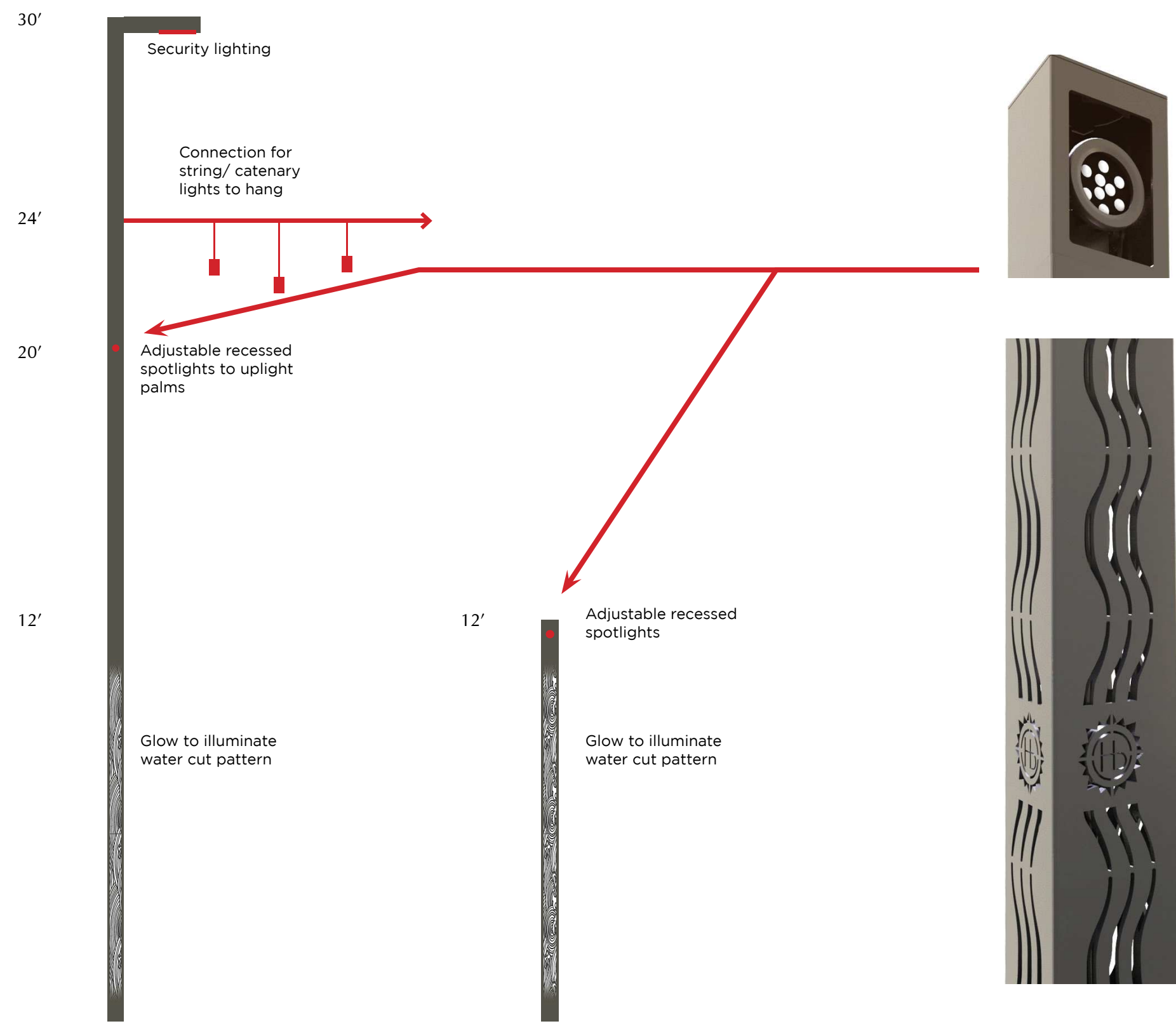
MODERN HERMOSA CUSTOM POLE



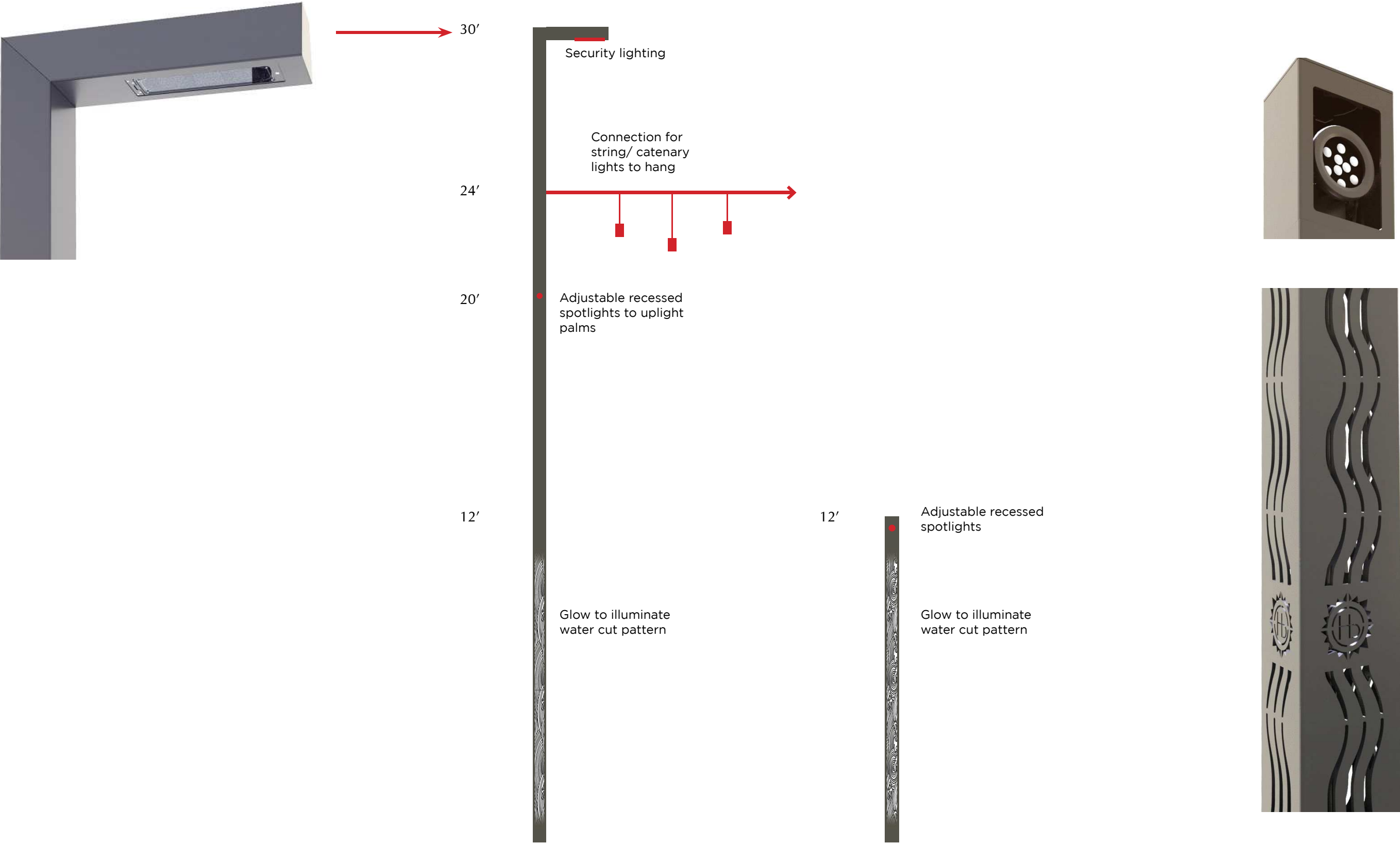
MODERN HERMOSA CUSTOM POLE



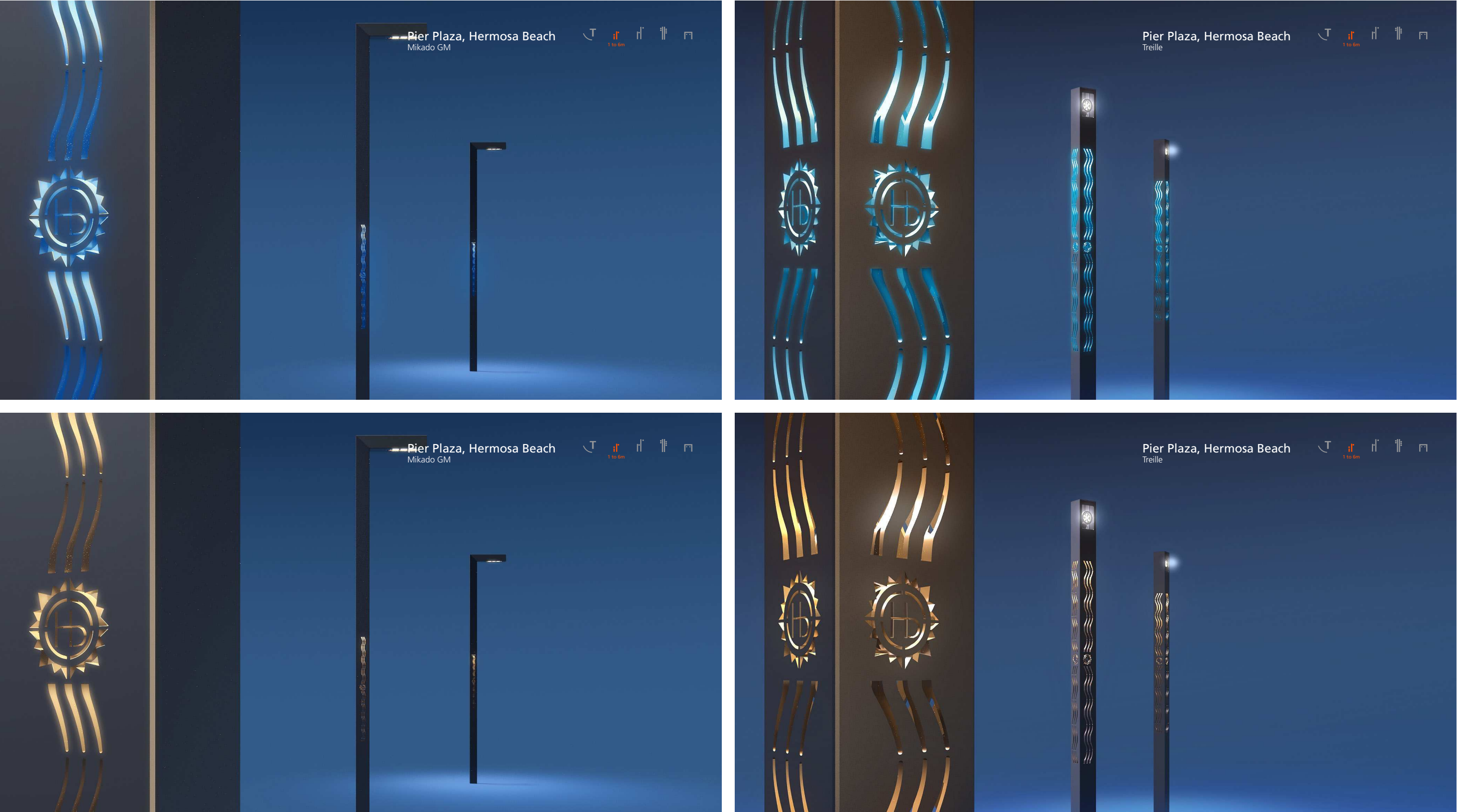
MODERN HERMOSA CUSTOM POLE



MODERN HERMOSA CUSTOM POLE



MODERN HERMOSA CUSTOM POLE



MODERN HERMOSA CUSTOM POLE



MODERN HERMOSA STRING LIGHTS AND GOBOS



- 38-A Color-changing programmable string lights will hang at varying heights which will give the visitors a sense of walking under a wave.
- 38-B Catenary gobo projector will continue ocean theme and project a wave pattern on the ground giving visitors a full sense of immersion.



38-B



MODERN HERMOSA SECURITY LIGHTING



Current lighting solution provides bright spots of light that illuminate small areas and create glare for surveillance team. New lighting solution will provide even and glareless lighting that can be raise and lowered as needed.

Existing Lighting Layout

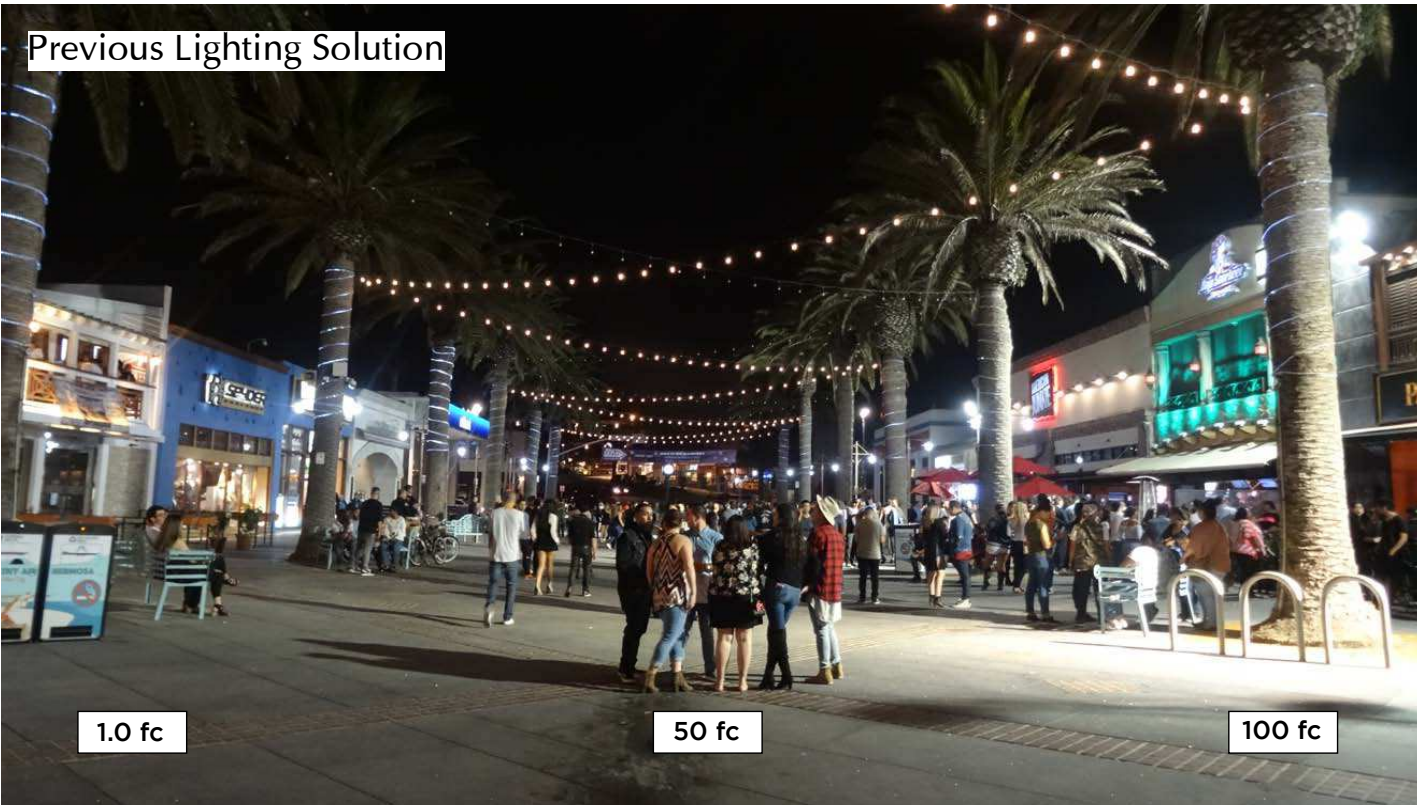
Max: 100 fc
Avg: N/A
Pole Height: 32'
Intense spot, dark surrounding

New Lighting Layout

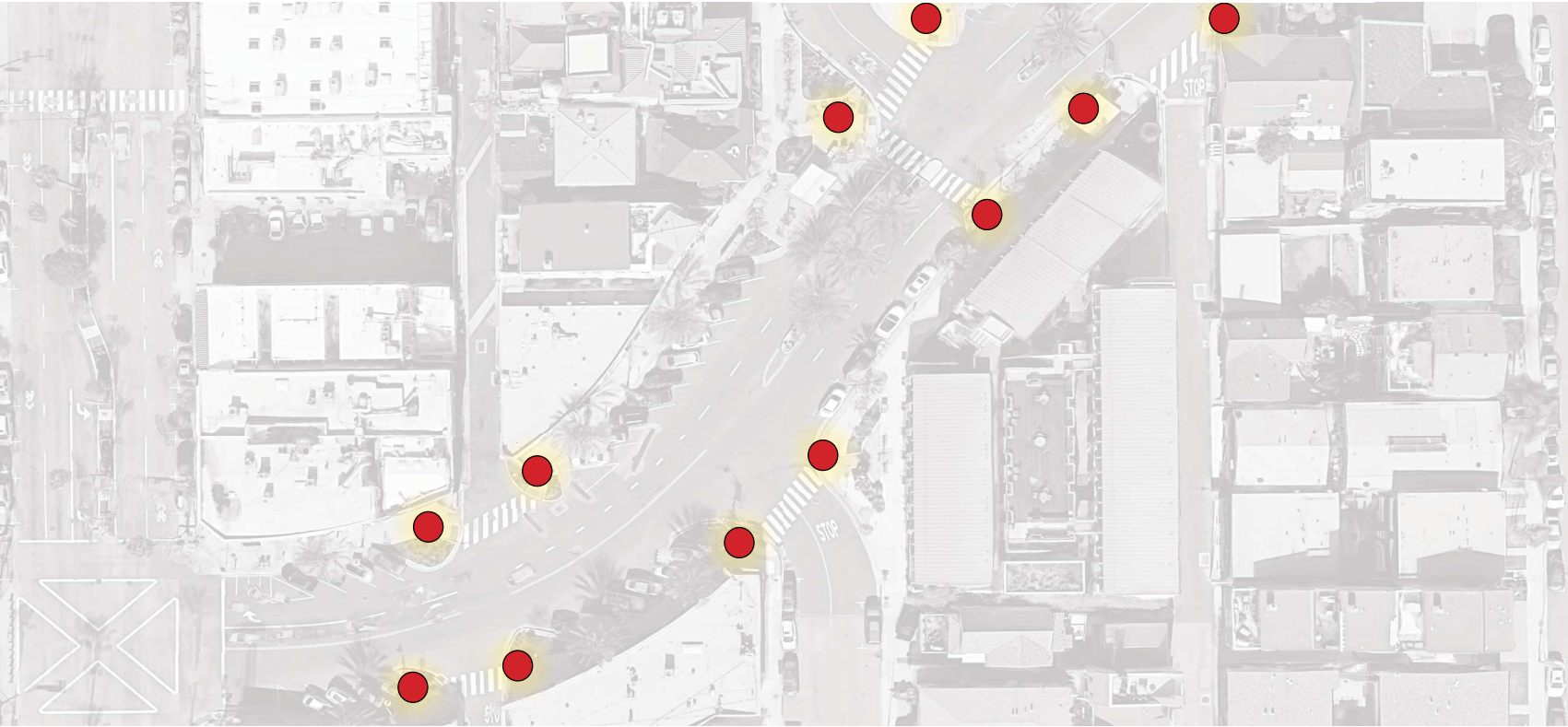
Max: 5.8 fc
Avg: 3.8 fc
Pole Height: 30'
Even lighting throughout space
Note: Light levels could be increased by the addition of



Previous Lighting Solution



CORNER OF PIER AND MANHATTAN

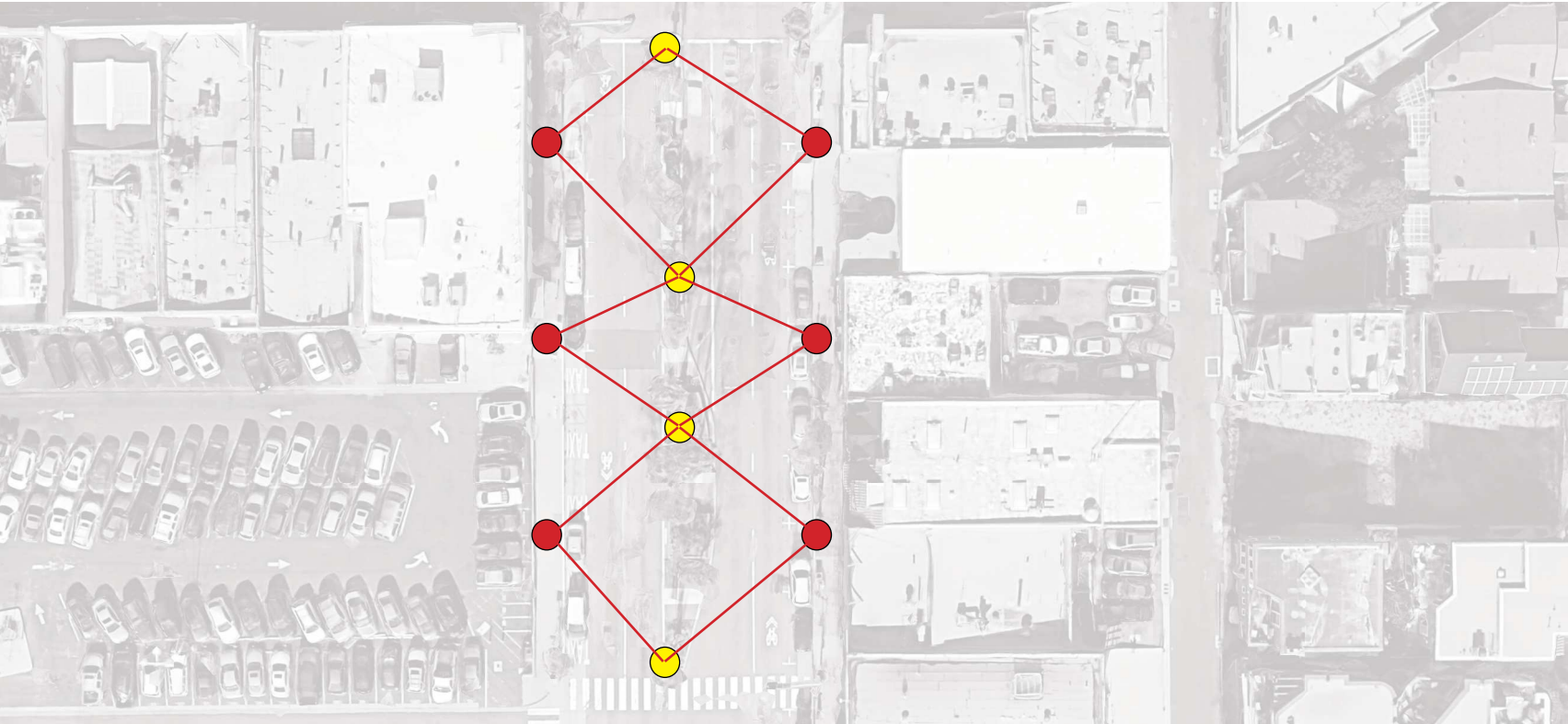
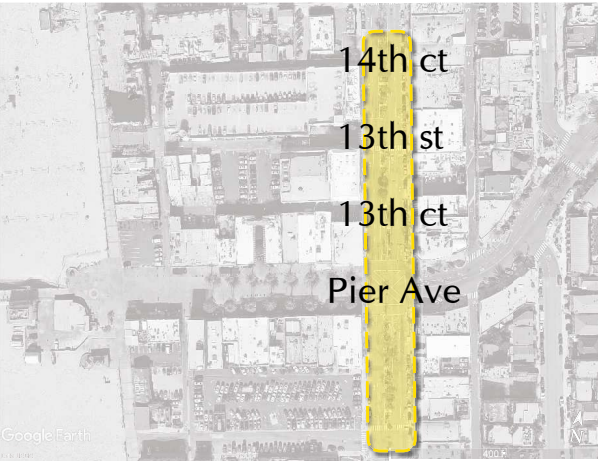


NEW POLES



New pole fixture, unique to HB, can act as an placemaker while also illuminating crosswalks.

HERMOSA AVENUE



- NEW POLES
- EXISTING POLE LOCATIONS

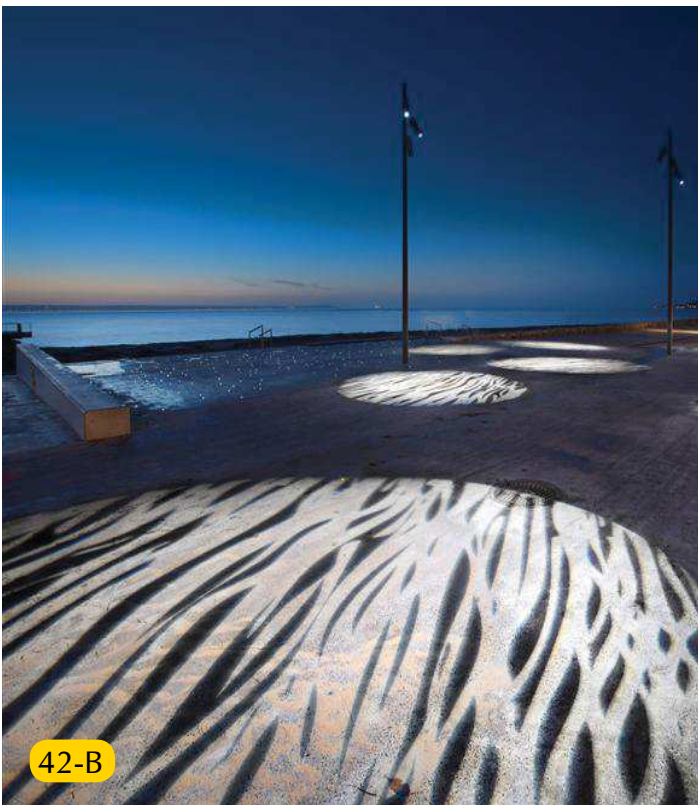
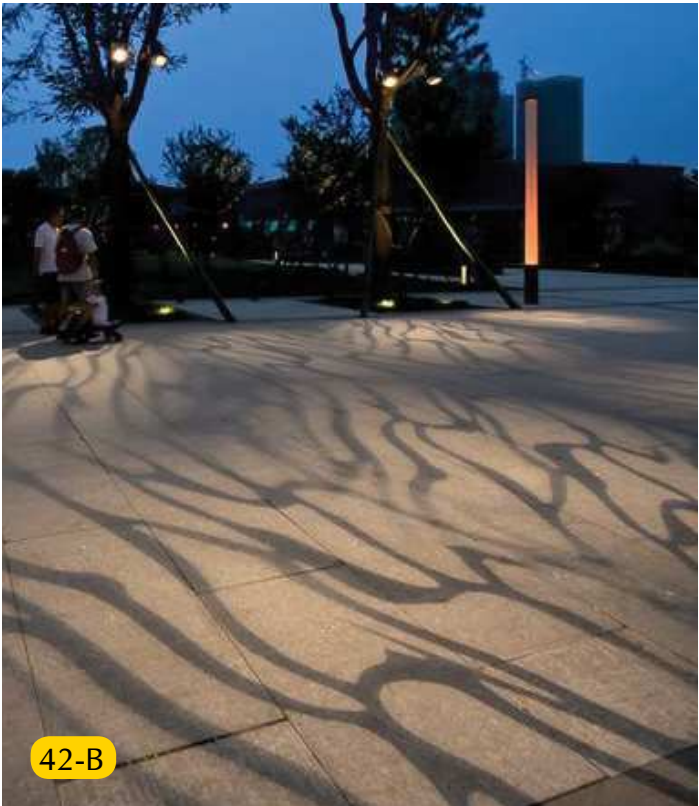
New poles will be added to allow for string lights to hang across the street to signal start of downtown area. The existing pole fixtures will be dimmed during the early hours of the evening to allow for the string lights to carry a stronger presence. Diagramed above is a portion of the design, this layout will continue a couple blocks up and down from the Pier Avenue intersection.



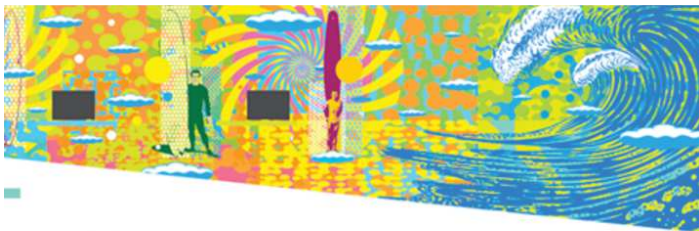
SURFER PLAZA



- EXISTING POLE LOCATIONS WITH NEW FIXTURE HEAD
- 42-A Add spotlight to existing pole to highlight surfer statue.
- 42-B Add gobo projectors to existing pole to project pattern on plaza ground.



ALLEYWAY MURALS



Many of the Hermosa murals are coincidentally located in areas marked with high security concerns. Illuminating these murals will highlight the art while also increasing the light levels in the alleyways of concern. The typical alleyway lighting solution should be used in addition to a mural specific fixture. These murals have been selected to be illuminated based on their proximity to the direct downtown and distance from residential areas.



ART ALLEY



Art alley created behind plaza restaurants and bars. This is another opportunity to attract visitors. The art alley could be shadow art, murals, lighting or a combination of the three.

NEON WALL



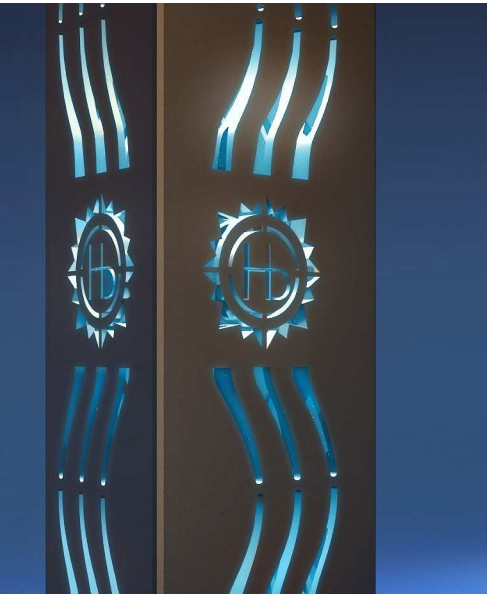
Neon signs added to the preexisting neon signs will create an attraction point while still illuminating parking area. This can become a “selfie” zone for Hermosa Beach visitors.



ALTERNATE OPTIONS



HERMOSA ALTERNATIVE





THANK YOU HERMOSA!