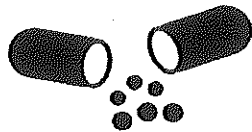


Prescription Drug Misuse

2017



South Bay Communities Creating Change

What is Prescription Drug Misuse?

- Taking medication without a prescription
- Taking medication to feel "high"
- Taking more medication than prescribed by a doctor
- Mixing medication with alcohol and/or other drugs
- Sharing prescription medication with others

Commonly Abused Prescription Drugs

Opioids,
Pain relievers

oxycodone (OxyContin),
hydrocodone (Vicodin),
codeine, morphine, fentanyl

Stimulants

Adderall, Ritalin, Dexedrine

Depressants

Xanax, Valium, Librium,
Nembutal

Misuse In Los Angeles



Prescription drug abuse is the fastest growing drug problem in the U.S.



800+ drug-related deaths, 60% involved prescription drugs



29% of drug-related deaths test positive for prescription drugs and alcohol



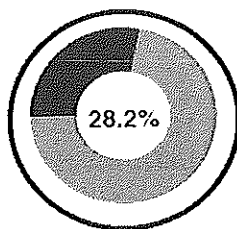
40% of drug-related deaths test positive for prescription drugs and illicit drugs

Typical Hospital Visits in a Day by Youth in 2013

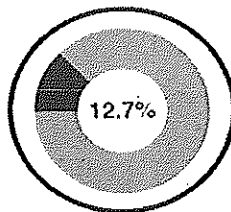
- 74** for prescription or non-prescription pain reliever
- 32** for antidepressants or antipsychotics
- 31** for benzodiazepines
- 26** for narcotic pain relievers
- 11** for attention-deficit/ hyperactivity disorder medication

Drug & Alcohol Use Among Youth

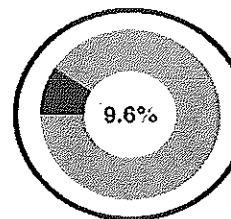
(Use within the past year)



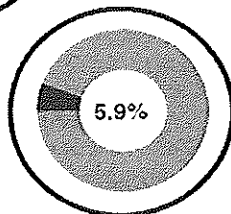
28.2% of youth (12-17) use Rx Drugs



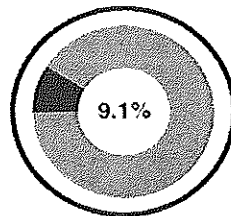
12.7% of youth used Marijuana



9.6% of youth used alcohol in the past month



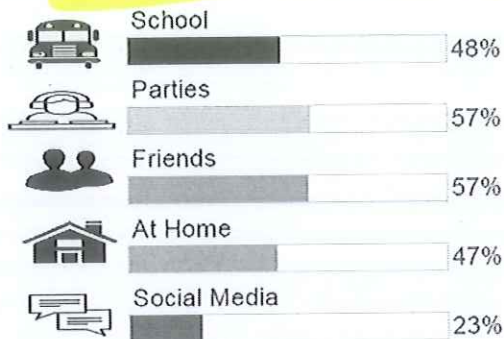
5.9% of youth misuse Rx Drugs. Xanax is the most commonly abused Rx drug by youth



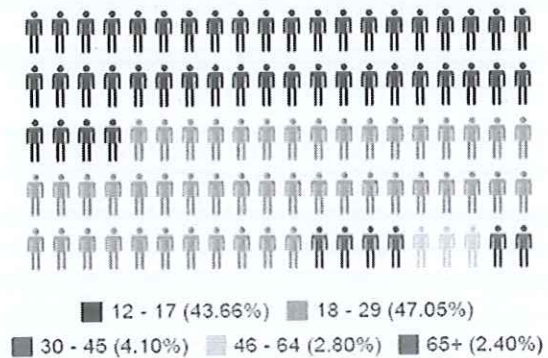
9.1% of youth use other illicit drugs

Many young people think that prescription drugs are safer than illegal drugs because they are prescribed by a physician.

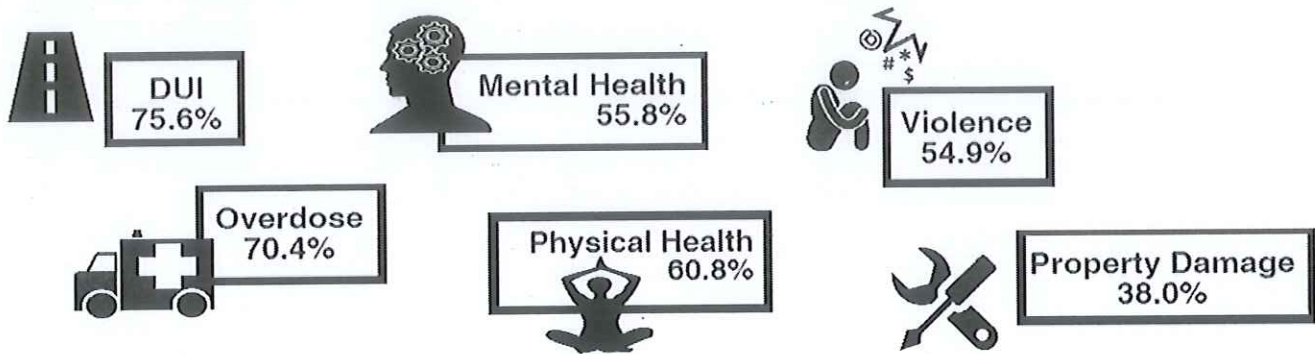
Common Places Youth Get Prescription Drugs⁵



Risk of Prescription Drug Misuse by Age Group⁵



Threat to Public Health + Community Welfare⁵



Tips for Drug Disposal

Follow disposal instructions on drug labels or patient information materials

Bring unused drugs to a community take-back program

The Los Angeles County Department of Public Works sponsors a "No Drugs Down the Drain" program that offers take-back locations free of charge <http://lapw.org/epd/nhw/nodrugs>

Mix unused medication with an undesirable substance such as coffee grounds and place in a resealable bag that can be disposed in the trash.

For more information visit www.fda.gov/drugs

What Can Our Community Do

- ◆ Know the facts about prescription drug misuse
- ◆ Recognize that all medicines have risk and potential benefits
- ◆ Keep track of your medicine
- ◆ Properly dispose of unused medication at approved locations
- ◆ Join a community coalition on drug prevention

Sources: 1. Paulozzi L, Baldwin G, Franklin G, et al. CDC Grand Rounds: Prescription Drug Overdoses—a U.S. Epidemic. MMWR. 2012;61(01):10-13.

2. Los Angeles County Department of Public Health, Division of Chronic Disease and Injury Prevention. "Drug-Related Deaths in LA County, 2000-2009," November 2011. www.publichealth.lacounty.gov/ivpp/pdf_reports/reports_home.htm.

3. Substance Abuse and Mental Health Services Administration, Center for Behavioral Health Statistics and Quality. (August 29, 2013). The CBHSQ Report: A Day in the Life of American Adolescents: Substance Use Facts Update. Rockville, MD.

4. Center for Behavioral Health Statistics and Quality. (2016). Key substance use and mental health indicators in the United States: Results from the 2015 National Survey on Drug Use and Health (HHS Publication No. SMA 16-4984, NSDUH Series H-51). Retrieved from <http://www.samhsa.gov/data/>

5. SBC3 Public Opinion Survey 2016: Collected from 561 community members ages 12 and older in the South Bay in the Fall of 2016.



Members of the South Bay Communities Creating Change:
AADAP, Inc., BHS Prevention,
BHS/NCADD, CAA, CLARE, IYCC

Contact Jeanne Shimatsu, AADAP, Inc.,
(323) 293-6284 | jshimatsu@aadapinc.org