



# Measure H

**Measure H will end homelessness for 45,000 people  
– women, children, seniors, foster youth,  
and those who are disabled – across Los Angeles County**

## **PATH supports Measure H**

*“Measure H is the first initiative that will significantly reduce homelessness in Los Angeles County and expedite the process of helping our homeless neighbors move off the streets, out of shelters, and into their own homes.” - Joel Roberts, PATH CEO*



# Measure H

## LA's Homeless Crisis 47,000 homeless in LA County



- Number of individuals experiencing homelessness increased by 5% over the past year
- **11,000** living in tents or vehicles
- **4,000** children
- **3,000** Veterans

# Measure H



## Tyrone, Marine Veteran

Tyrone experienced homelessness off and on for 34 years. With the help of PATH, he now has a home!

# Measure H

**LA County Homeless Initiative**  
<http://priorities.lacounty.gov/homeless/>

- Comprehensive Plan
- Planning started in 2015
- Broad participation
- 47 Approved Strategies





# Measure H

## LA County Homeless Initiative Early Success with 1st Year Funding



- Nearly 600 shelter beds now open 24/7
- More than 160 new “bridge housing” beds
- Hundreds of individuals rapidly rehoused
- More than 100 families, with children, avoided becoming homeless



# Measure H

## LA County Homeless Initiative

*- Immediate and long-term solutions -*

### Homeless Prevention

#### Support Services

- Mental health treatment
- Substance abuse treatment
- Counseling
- Case Management
- Employment Services

### Coordinated System

- Strengthen and expand
- Outreach
- Emergency shelter
- Foster youth

### Permanent Housing

- Rental support
- Build new affordable housing

[epath.org/YesOnH](http://epath.org/YesOnH)

# Measure H

## Accountability: Citizen Advisory Committee



- Annual publication of how Measure H funds are allocated
- Annual independent audit
- Recommendations for improvement

# Measure H



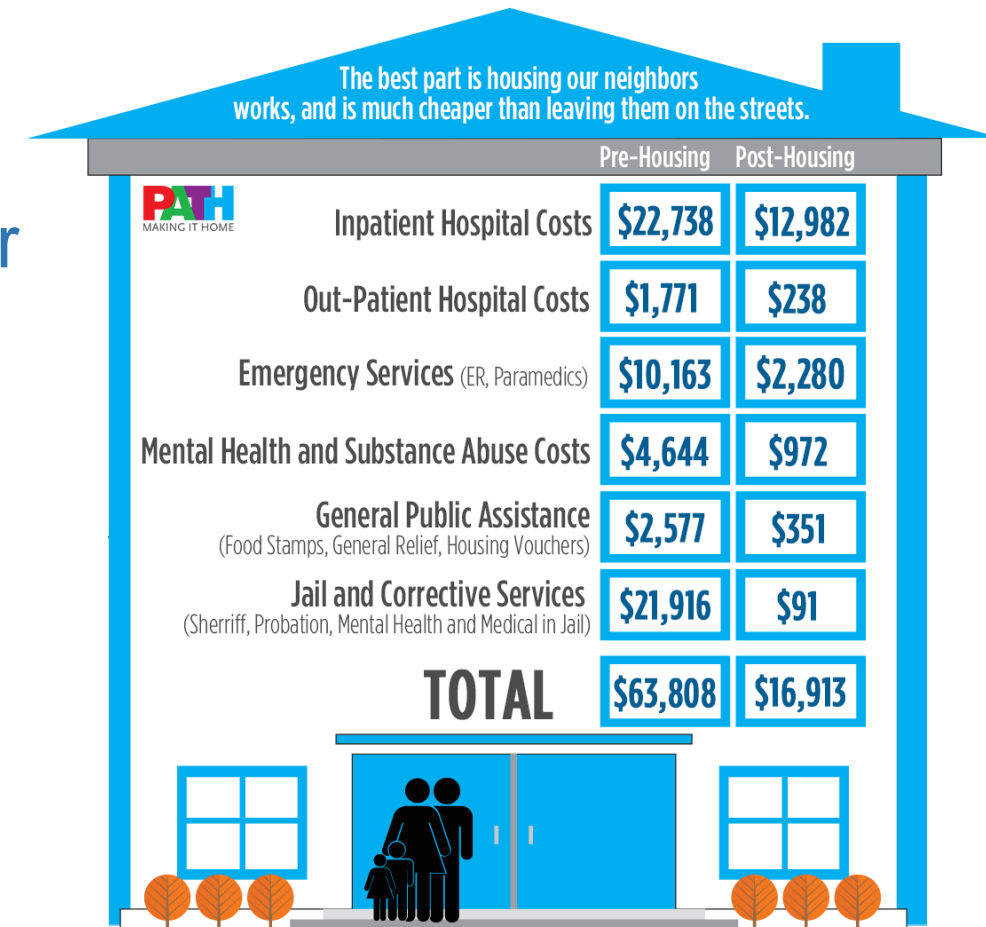
- Bi-partisan support – unanimous vote to put Measure H on the ballot
- Broad support from leading business, faith, social services, labor & community groups

*Supporters include PATH, United Way of Greater LA, LA Area Chamber of Commerce, ACLU – Southern California, and more...*



# Measure H

- ¼ cent special sales tax for 10 years
- About \$1/month for the average consumer
- \$350 million annually
- **No Sales Tax in CA on basic needs...**
  - Rent
  - Food
  - Utilities
  - Medical and health services
  - Transportation



Stats from Economic Roundtable numbers in 2012 dollars. Infographic created by PATH.

# Measure H



**Measure H**  
Ending homelessness for  
45,000 people across  
LA County

**Thank you!**