



Vote Yes on Measure H

March 7th

www.epath.org/YesOnH

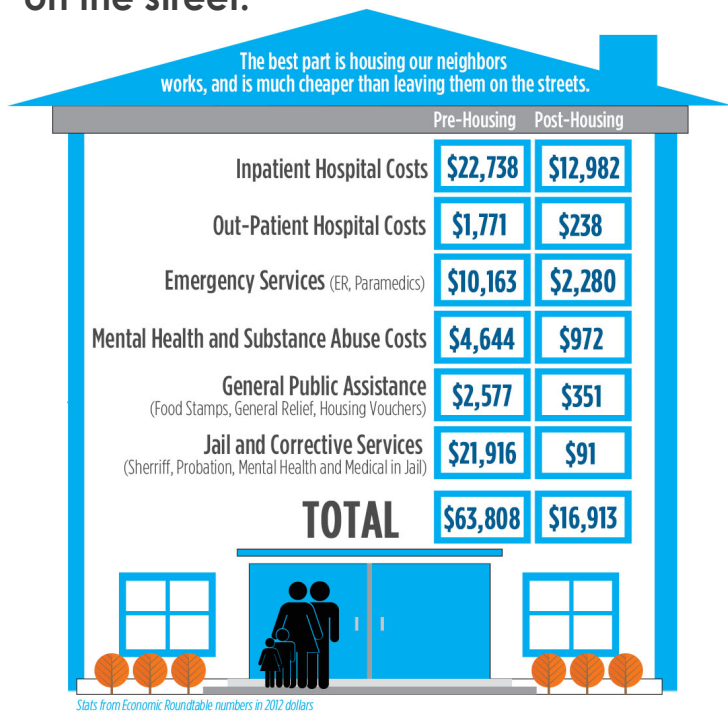
What is Measure H?

- Measure H will invest \$350 million a year for 10 years in the solutions that have been proven to prevent and end homelessness
- A ¼ cent sales tax to help end homelessness in Los Angeles County

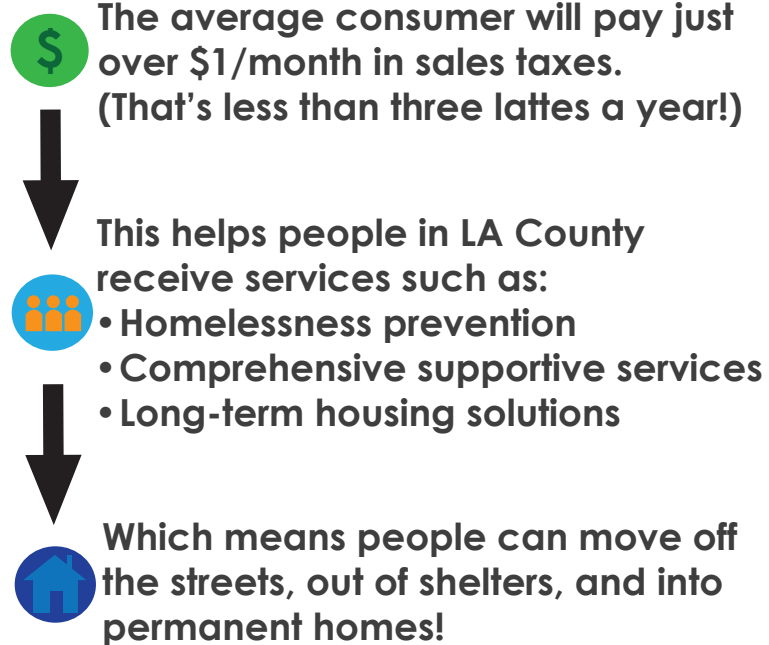


Did you know?

It costs fewer tax payer dollars to provide housing than it does for a person to live on the street.



How does it work?



How is Measure H different from Prop HHH?

Measure H

- Funds services in Los Angeles County
- Immediate impact



Prop HHH

- Builds housing for those who are chronically homeless in the City of Los Angeles



If you can volunteer to help pass Measure H, please sign up at epath.org/YesOnH

Paid for by PATH