



CITY OF HERMOSA BEACH

Americans with Disabilities Act (ADA) Study Session

03.31.22

Agenda.

- 01** ■ Hermosa Beach ADA Efforts
- 02** ■ Greenbelt Feasibility Study for ADA Accessibility
- 03** ■ ADA Self Evaluation and Transition Plan



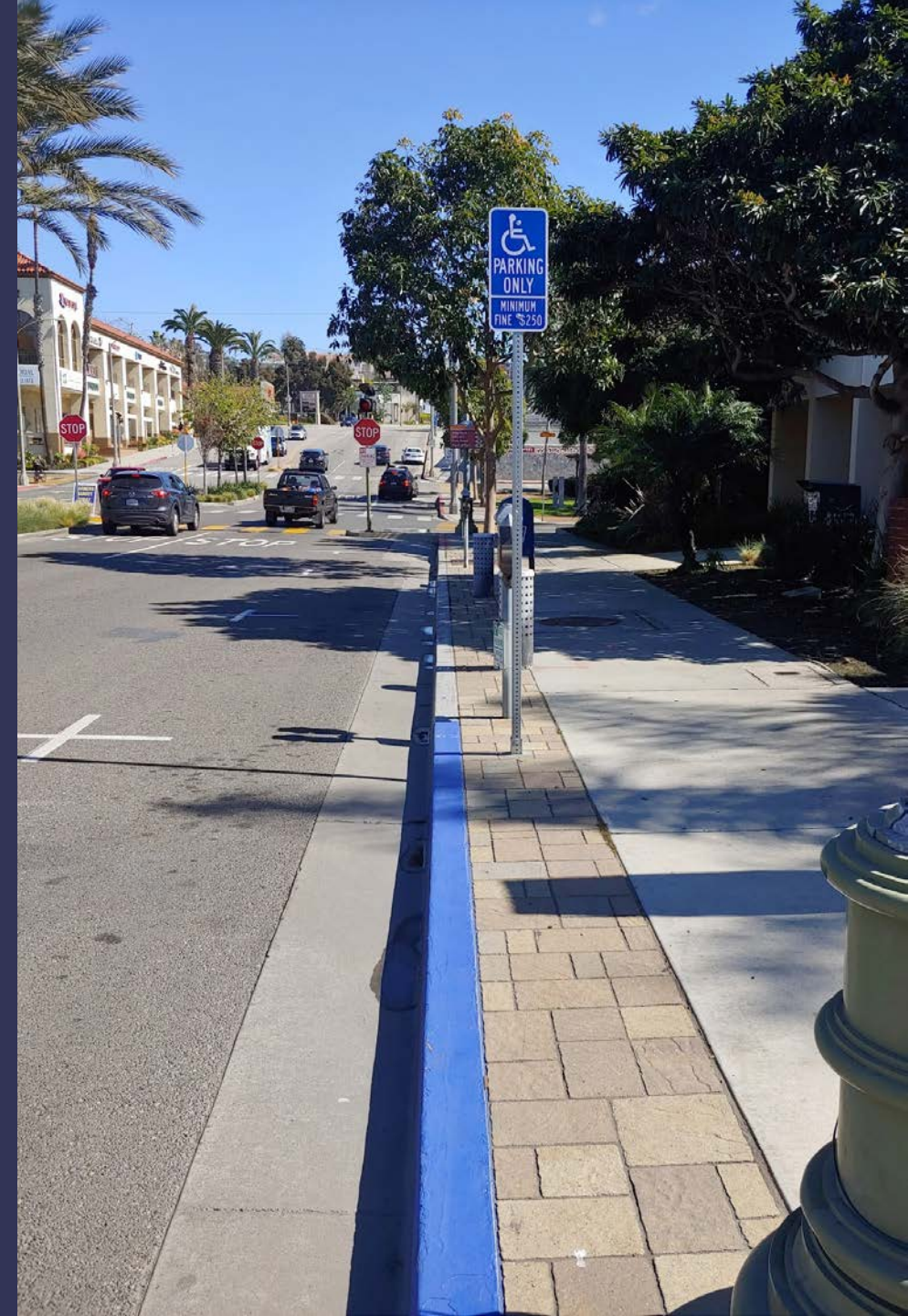
HERMOSA BEACH ADA EFFORTS

01

ADA PROGRAMMATIC EFFORTS

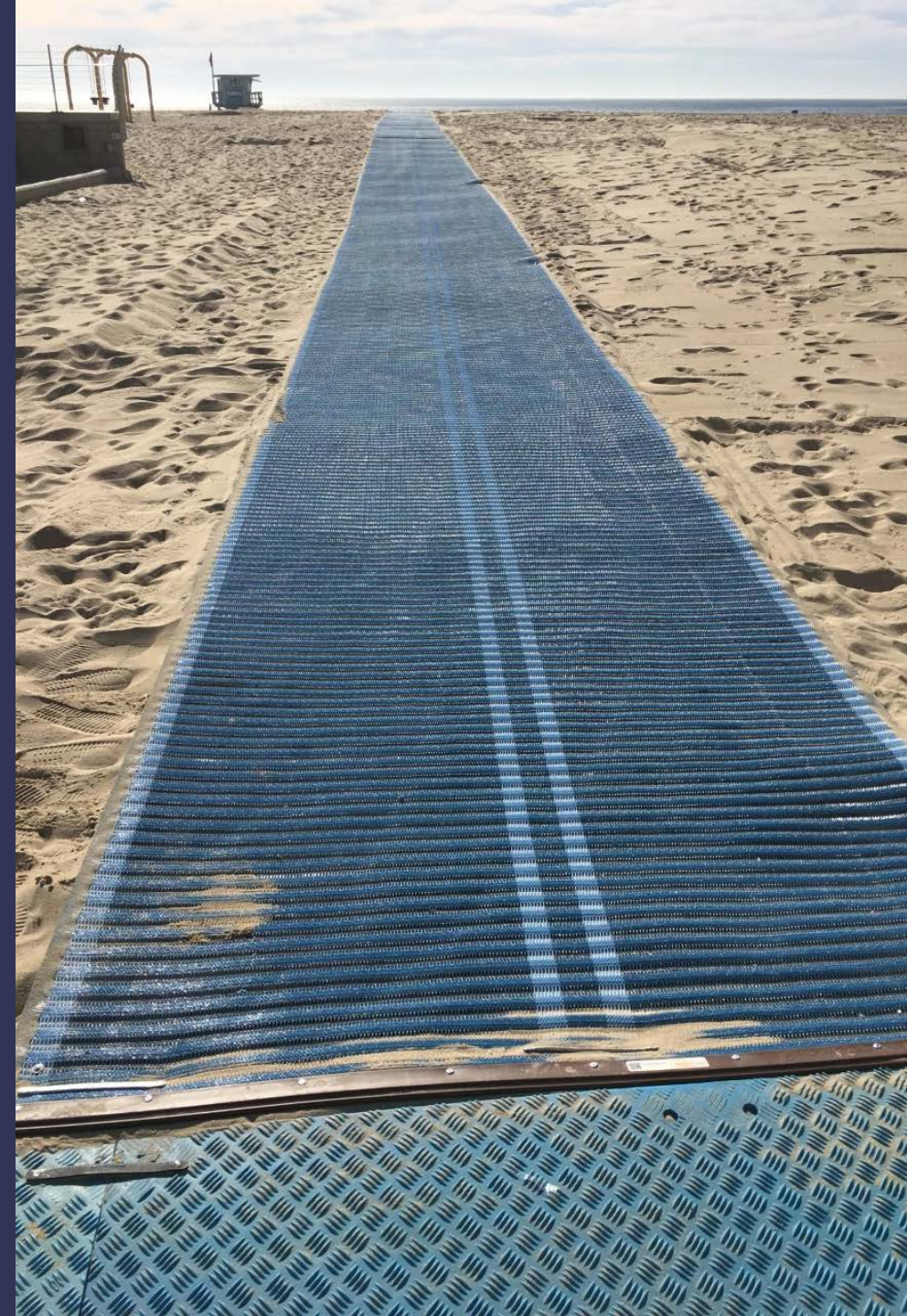
The City continues to commit its efforts and resources to improve accessibility.

- Dedicated Certified Access Specialist (CASp) consultant and ADA coordinator.
- Established a City's ADA grievance process.
- Finalizing City's ADA Self Evaluation and Transition Plan.



ADA PROJECT EFFORTS

The City continues to incorporate ADA improvements in a variety of City projects and private developments.



Project Category	ADA Component	CIP No.	Project Name	Project Budget	Project Manager	Study/Conceptual Planning	Preliminary Design	Final Engineering Design	Project Approval/Bidding	Construction	Closeout	Tentative Date to Next Milestone/ Update	Estimated Project Completion Date	Current Project Status	Project Description
SH	X	102	Bus Stops Improvement	\$ 900,000	Romany Basilyous		X					Complete Preliminary Design - 3/22	09/22	Final Engineering Design.	This project will improve bus stops throughout the City. These improvements will include Americans with Disabilities Act (ADA) accessible curb ramps, concrete bus pads, crosswalks, and bus stops.
SH			Pay by App Parking Signage (NEW)	\$ 79,000	TBD			X				TBD	TBD	Final Engineering Design. Pending staff availability.	The implementation of a pay by app system will require the installation of signs that will provide instructions for users and zone numbers necessary to use the system. The industry recommendation is that at least two signs be installed per block. At this time, most vendors providing pay by app systems will provide the signs at no additional cost to the City but require City staff to install them and any additional poles. It is estimated that the City will need approximately 25 signs installed, and 30 new poles installed in some locations due to a lack of existing poles. The installation would occur in areas of the City where paid parking is currently not allowed.
SH	X	143					X								lanes and maintain lane widths of the improvements will address existing traffic operations, reducing instances of collisions for bicyclists and transit riders, and
SH		164						X							structure on Hermosa Ave from 4th Street to 103rd Street. This project is part of Study 103 Sea Level Rise Risk Assessment and is part of a multicounty green street project.
SH		186								X					Project will also repair/replace deteriorated portions of sidewalk, curb and gutter, and curb ramps. This work will be performed following the sewer and storm drain repairs identified in the Sewer and Drainage Master Plans. Project will be combined with Project 186.
SH	X	189	Bus Stops Improvements								X				between the Cities of Hermosa and San Pedro. This project is part of the 2013 Sea Level Rise Risk Assessment.
SH	X	190								X		Closeout	Closeout	Closeout.	The project will also consider the addition of a dedicated ADA path to provide greater ADA accessibility to The Strand.
SH	X	191	Annual Street Improvements	\$ 45,000	Romany Basilyous		X					Complete Preliminary Design - 3/22	TBD	Preliminary Design.	This project provides for pavement rehabilitation of streets at various locations. The project will also repair/replace deteriorated portions of sidewalk, curb and gutter, and curb ramps. This work will be performed following the sewer and storm drain repairs identified in the Sewer and Drainage Master Plans. Project will construct new ADA curb ramps. Estimated cost of ADA improvements is \$170,000.
SH	X	192	Annual Striping Improvements	\$ 100,000	Michelle Licata						X	Closeout	Closeout	Closeout.	This project provides traffic striping, markings, and signage improvements and modifications throughout the City at various locations to improve safety and visibility. This project will help address needed thermoplastic striping which the City is not capable of installing directly. Project includes restriping and new signage to bring City ADA parking spots in City lots to comply with current ADA standards. Estimated cost of ADA Improvements is \$32,000.
SH	X	193	Annual Street Improvements	\$ 100,000	Michelle Licata						X	Closeout	Closeout	Closeout.	This project will implement rectangular rapid flashing beacons and other measures at several uncontrolled intersections on Hermosa Avenue at 4th, 6th, 19th, 24th, 25th Streets and the crossing in front of Clark Building on Valley Drive.
SH	X	194	Annual Street Improvements	\$ 100,000	Michelle Licata						X	Closeout	Closeout	Closeout.	This project provides traffic striping, markings, and signage improvements and modifications throughout the City at various locations to improve safety and visibility. This project will help address needed thermoplastic striping which the City is not capable of installing directly. Improvements will include ADA components to be determined during design.
SH	X	195	City Sidewalk Improvements (NEW)	\$ 50,000	Michelle Licata			X				Complete Final Engineering Design - 2/22	TBD	Final Engineering Design.	This project provides repairs, replacements, and improvements to sidewalks throughout the City at various locations to maintain and improve safety. Improvements will include ADA components by increasing sidewalk accessibility to be determined during design.

Project Category
ADA Component
CIP No.
102
Bus Stops Improvements

Project Description

This project will improve bus stops throughout the City.
These improvements will include Americans with Disabilities Act (ADA) accessible curb ramps, concrete bus pads, crosswalks, and bus stops.

CAPITAL IMPROVEMENT PROGRAM MONTHLY STATUS REPORT



RECENTLY COMPLETED PROJECTS WITH ADA IMPROVEMENTS

- CIP 186 & 190 Annual Street Improvements
- CIP 192 Annual Striping Improvements
- Temporary Downtown Lane Reconfiguration
- Friends of the Library



CIP 186 & 190 ANNUAL STREET IMPROVEMENTS

Constructed 38 curb ramps and 200 feet of sidewalk.



CIP 192 ANNUAL STRIPING IMPROVEMENTS

Installed and updated 14 ADA parking spaces.



DOWNTOWN HERMOSA BEACH TEMPORARY LANE RECONFIGURATIONS

Installed 8 new on-street ADA parking spaces.

@Mike
GUITAR PARLO
atmikesgu



FRIENDS OF THE LIBRARY

Constructed new ramps for the Community Center
and Friends of the Library.



ACTIVE PROJECTS WITH ADA IMPROVEMENTS

- CIP 102 Bus Stops Improvements
- CIP 143 PCH Mobility Improvement Project
- CIP 191 Annual Street Improvements
- CIP 194 Annual Striping Improvements
- CIP 195 City Sidewalk Improvements
- CIP 601 & 698 Prospect Avenue Curb Ramps
- CIP 669 City Park Restrooms and Renovation
- CIP 689 Clark Building Renovations
- CIP 699 Parking Structure (Lot C) Improvements
- CIP 549 Temporary Beach Accessible Routes
- STUDY 544 Greenbelt Accessible Path Assessment

CIP 102 BUS STOPS IMPROVEMENTS

These improvements will include ADA accessible curb ramps, concrete bus pads, crosswalk, striping improvements, furnishing, and other general improvements within direct vicinity of the bus stops.

Status: Preliminary Design

The background image shows a street intersection with traffic lights, signs, and cars. A sign above a traffic light reads "Aviation Blvd 10th St". A sign on a utility pole reads "NO TURN ON RED". A sign in the distance reads "Mobil". A sign on the left reads "ROCK AT CARROLL".

CIP 143 PCH MOBILITY IMPROVEMENT PROJECT

Improvements will include ADA components to be determined during design.

Status: Study/Conceptual Planning

An aerial photograph of a street surface. A square area of tactile paving, consisting of a grid of small, raised circular bumps, is visible in the lower-left quadrant. The rest of the street is paved with smooth concrete or asphalt. The image is overlaid with a semi-transparent dark blue filter.

CIP 191 ANNUAL STREET IMPROVEMENTS

Improvements will include ADA components to be determined during design

Status: Preliminary Design



CIP 194
ANNUAL
STRIPING
IMPROVEMENTS

Improvements will include ADA components to be determined during design.

Status: Preliminary Design



CIP 195
CITY SIDEWALK
IMPROVEMENTS

Improvements will increase sidewalk
accessibility and address tripping

Status: Final Engineering Design



CIP 601 & 698
PROSPECT
AVENUE
CURB RAMPS

Reconstruction of 12 curb ramps to be ADA compliant.

Status: Project Approvals/Bidding



CIP 669
CITY PARK
RESTROOMS
AND
RENOVATION

Constructing new and renovated restrooms which all will be ADA compliant.

Status: Construction

A grayscale photograph of the Clark Building, a large, multi-story structure with a classical architectural style. The building features several large, dark-framed windows and a prominent entrance with a set of stairs. A sign on the building reads "CLARK BUILDING". To the left, another sign indicates "851 VALLEY DRIVE". The foreground shows a paved walkway and a grassy area. The image is overlaid with a semi-transparent dark gray filter.

CIP 689
CLARK
BUILDING
RENOVATIONS

Renovations will bring the Clark Building to ADA standards along with new access ramps.

Status: Final Engineering Design



CIP 699
PARKING
STRUCTURE
(LOT C)
IMPROVEMENTS

Replacement of the parking structure elevator and other ADA improvements.

Status: Final Engineering Design



CIP 549
TEMPORARY
BEACH
ACCESSIBLE
ROUTES

Expanded the pilot program to include access routes at 2nd St, 11th St, and 22nd St.

Use of new Mobi-Mat material and other ADA improvements to be made.

Status: Mats deployed / Approvals



FUTURE PROJECTS WITH ADA IMPROVEMENTS

- CIP 188 Strand Bikeway and Walkway Improvements at 35th Street
- CIP 604 City Wide ADA Improvements
- CIP 682 Parking Lot D Improvements
- CIP 692 14th Street Beach Restroom Rehabilitation
- CIP 695 Parking Lot A Improvements
- STUDY 101 Hermosa Avenue Greenwich Village Street Realignment

CIP 604 CITY WIDE ADA IMPROVEMENTS

Provides improvements city wide in order to comply with ADA standards along with the City's Transition Plan being developed.

Design pending staff availability



CIP 682 PARKING LOT D IMPROVEMENTS

Project will include new ADA ramp to the parking lot and new ADA parking spots.

Awaiting funding



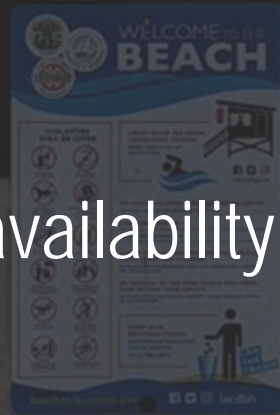
CIP 692 14TH STREET BEACH RESTROOM REHABILITATION

Improvements will include ADA components to be determined during design.

Design pending staff availability

MEN

WOMEN



CIP 695 PARKING LOT A IMPROVEMENTS

Improvements will include ADA components to be determined during design.

Design pending staff availability



STUDY 101 HERMOSA AVENUE GREENWICH VILLAGE STREET REALIGNMENT

Improvements will include ADA components to be determined during design.

Conceptual Design (part of Study 103 – Sea Level Rise Risk Assessment)

CIP 188 STRAND BIKEWAY AND WALKWAY IMPROVEMENTS AT 35TH STREET

The project will consider the addition of a dedicated ADA path to provide greater ADA accessibility to The Strand.

Conceptual Design (part of Study 103 – Sea Level Rise Risk Assessment)





GREENBELT FEASIBILITY STUDY
FOR ADA ACCESSIBILITY

02

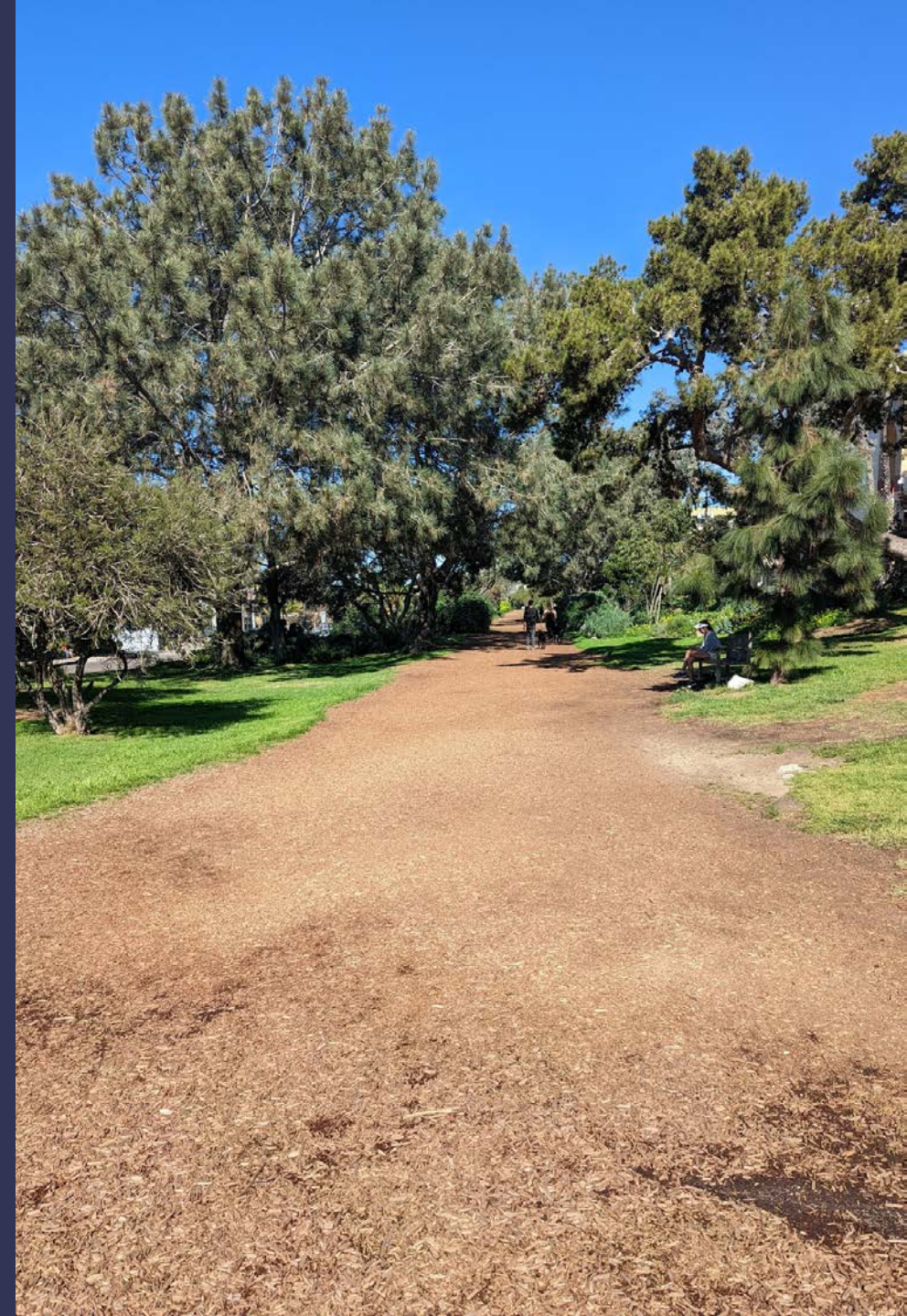
BACKGROUND

- Greenbelt was once a railroad and converted into a restricted open space in 1986.
- In 2018, Greenbelt accessibility was brought to Council.
- Council directed staff to investigate the option of an accessible path on the Greenbelt.
- Study 544 was created to look at high level feasibility of making the Greenbelt more accessible.



STANDARDS USED FOR ANALYSIS

- 2014 Architectural Barriers Act (ABA) Guidelines for Outdoor Developed Areas
- 2010 Americans with Disabilities Act (ADA) Standards for Accessible Designs





Hotel Hermosa
4.2 (603)
3-star hotel

Peppertree Apartments

Tesla Supercharger
**MIDBLOCK
ACCESS
W/RAMP**

BENCHES

**WORKOUT
STATION, WATER
FOUNTAIN, PET
STATION, TRASH
CAN**

BENCHES

**WORKOUT
STATION,
BENCH**

**MIDBLOCK
ACCESS**

**WORKOUT
STATION, WATER
FOUNTAIN, PET
STATION, TRASH
CAN**

OBSERVATIONS

Pedestrian Route Type	Key Elements of Design Intent
Accessible route (AR)	Connects accessible elements and spaces of a building or facility on a site
Sidewalk—pedestrian access route (PAR)	Parallel to roadway Designed for pedestrians (not bicycles) Sometimes part of the roadway
<u>Pedestrian Trail (Trail)</u>	Designed for the "recreation experience" Does not connect elements and spaces on a site Generally includes a trailhead Has limited to no transportation function
Outdoor recreation access route (ORAR)	Connects outdoor constructed features and spaces within picnic and camping facilities, viewing areas, and trailheads only
Beach access route (BAR)	Crosses the surface of the beach to the shoreline Coincides with or is located in the same general area as pedestrian access points to the beach
Shared-use path (SUP)	Intended for multi-use Bicycle/transportation focus Machined, layered surface (improved) Located in either an "independent corridor" or public right-of-way

ROUTE TYPE SELECTION

Requirements and Criteria:

- Running slopes
- Cross slope
- Use of trail

Pedestrian Route Type	Key Elements of Design Intent
Accessible route (AR)	Connects accessible elements and spaces of a building or facility on a site
Sidewalk—pedestrian access route (PAR)	Parallel to roadway Designed for pedestrians (not bicycles) Sometimes part of the roadway
<u>Pedestrian Trail (Trail)</u>	Designed for the "recreation experience" Does not connect elements and spaces on a site Generally includes a trailhead Has limited to no transportation function
Outdoor recreation access route (ORAR)	Connects outdoor constructed features and spaces within picnic and camping facilities, viewing areas, and trailheads only
Beach access route (BAR)	Crosses the surface of the beach to the shoreline Coincides with or is located in the same general area as pedestrian access points to the beach
Shared-use path (SUP)	Intended for multi-use Bicycle/transportation focus Machined, layered surface (improved) Located in either an "independent corridor" or public right-of-way

ROUTE TYPE SELECTION

Requirements and Criteria:

- Running slopes
- Cross slope
- Use of trail

PATHWAY MATERIAL REQUIREMENTS

- Firm, stable, and slip resistant.
- Maintain the natural look of the Greenbelt.
- Recommend stabilized decomposed granite (DG) as path material.



MAINTENANCE

- New accessible pedestrian trail will require increased maintenance.
- Maintain drainage and grading of DG path to keep dry.
- Trimming of encroaching tree branches and vegetation out of the path.



FEASIBILITY

- An accessible path is feasible anywhere on the Greenbelt .
- Some locations provide more challenges than others.
- The section of Greenbelt between Pier and 11th St was found to be the ideal location to implement a pilot path.



PATH CONCEPTS

- Landscape Architect SWA provided visuals and conceptual options for pilot segment.

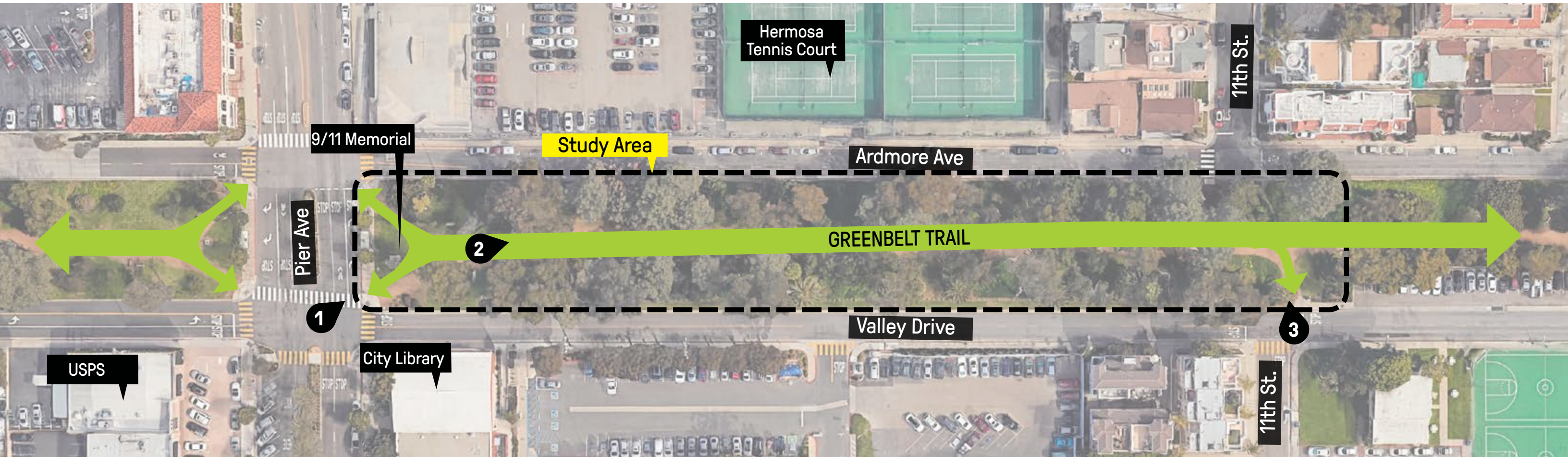


Site Location



Project Overview

Existing Condition



1. Pier Ave & Valley Drive Entry



2. Greenbelt Trail

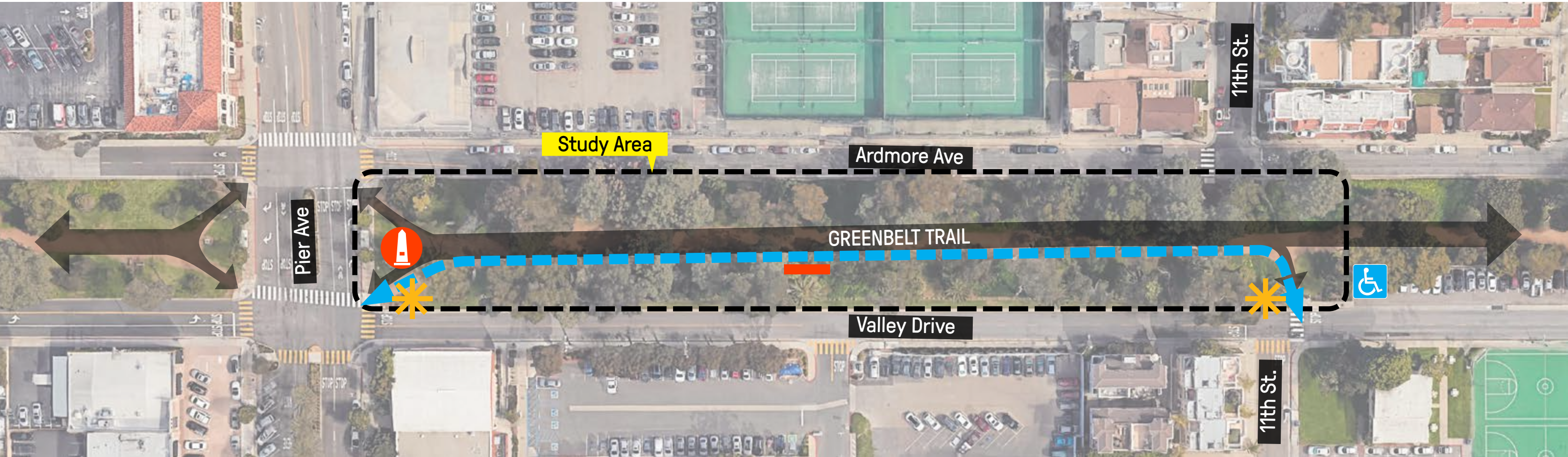


3. 11th Street Entry








Project Overview

Accessibility Upgrade



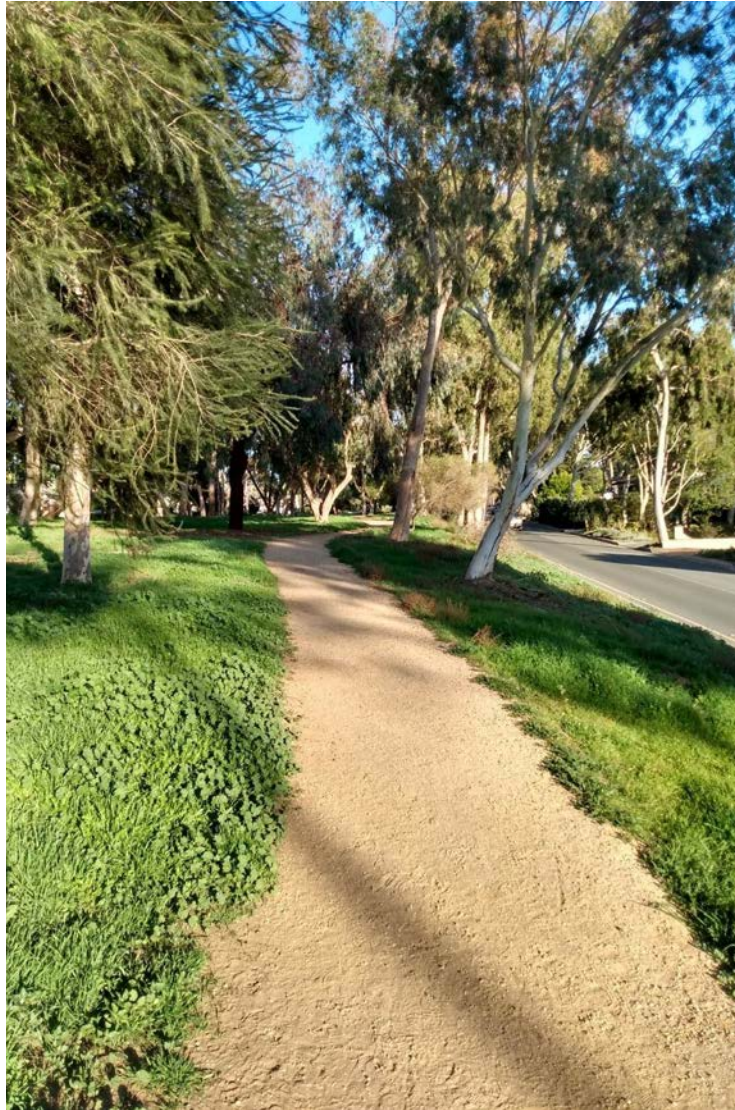
Legend

- 
 Accessible Trail
(Decomposed Granite)
- 
 Trail Marker
- 
 Hermosa Beach
 9/11 Memorial
- 
 Accessible Bench
 with Companion Seat
- 
 Accessible Parking



Project Overview

South Bay Precedents



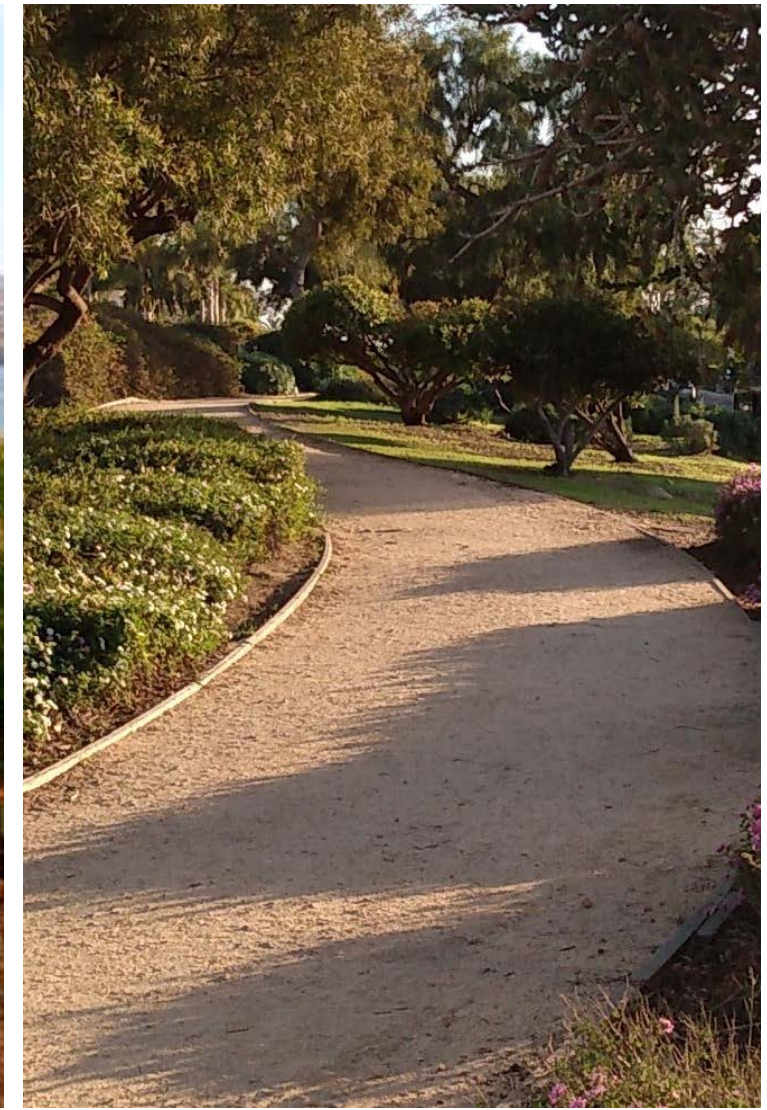
Nature Trail
Palos Verdes Estates



Seascape Trail
Rancho Palos Verdes



Terranea Trail
Rancho Palos Verdes



Nature Trail
Rancho Palos Verdes

Project Overview

Decomposed Granite

Edge Conditions



Natural Edge
Jeffrey Open Space Trail

Colors



Gold Decomposed Granite
Sunnyside



Red / Brown
Canyon clay



Brown / Grey
Kettle

Project Overview

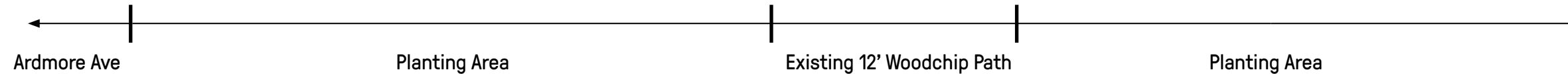
Existing Condition



Section



Plan

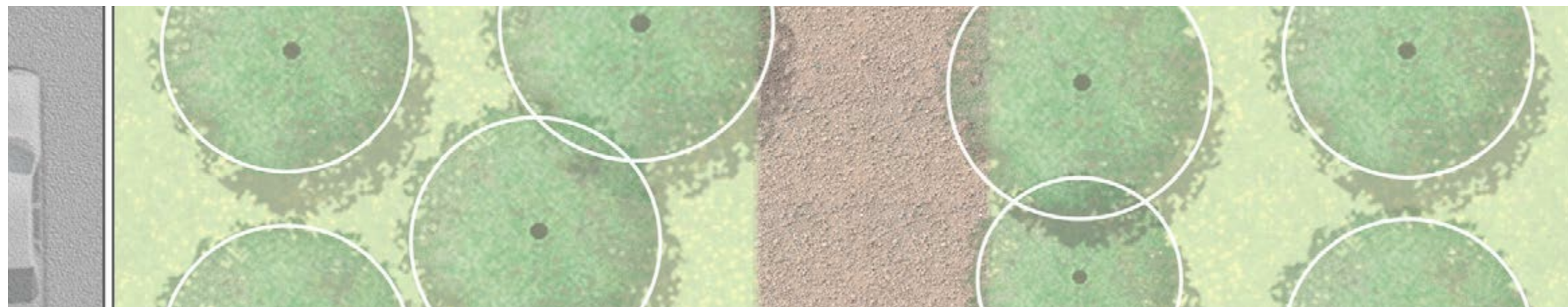


Design Alternative

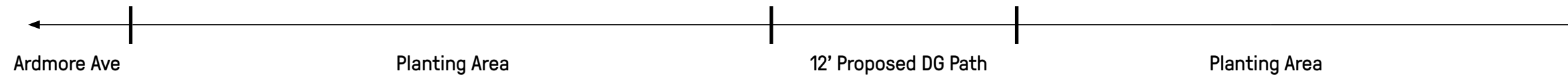
Option 1: Replace entire path with decomposed granite.



Section



Plan



Design Alternative

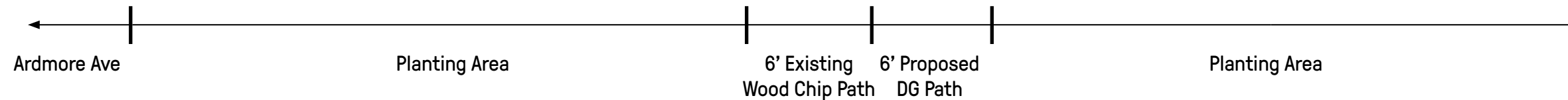
Option 2: Combine wood chip and decomposed granite path.



Section

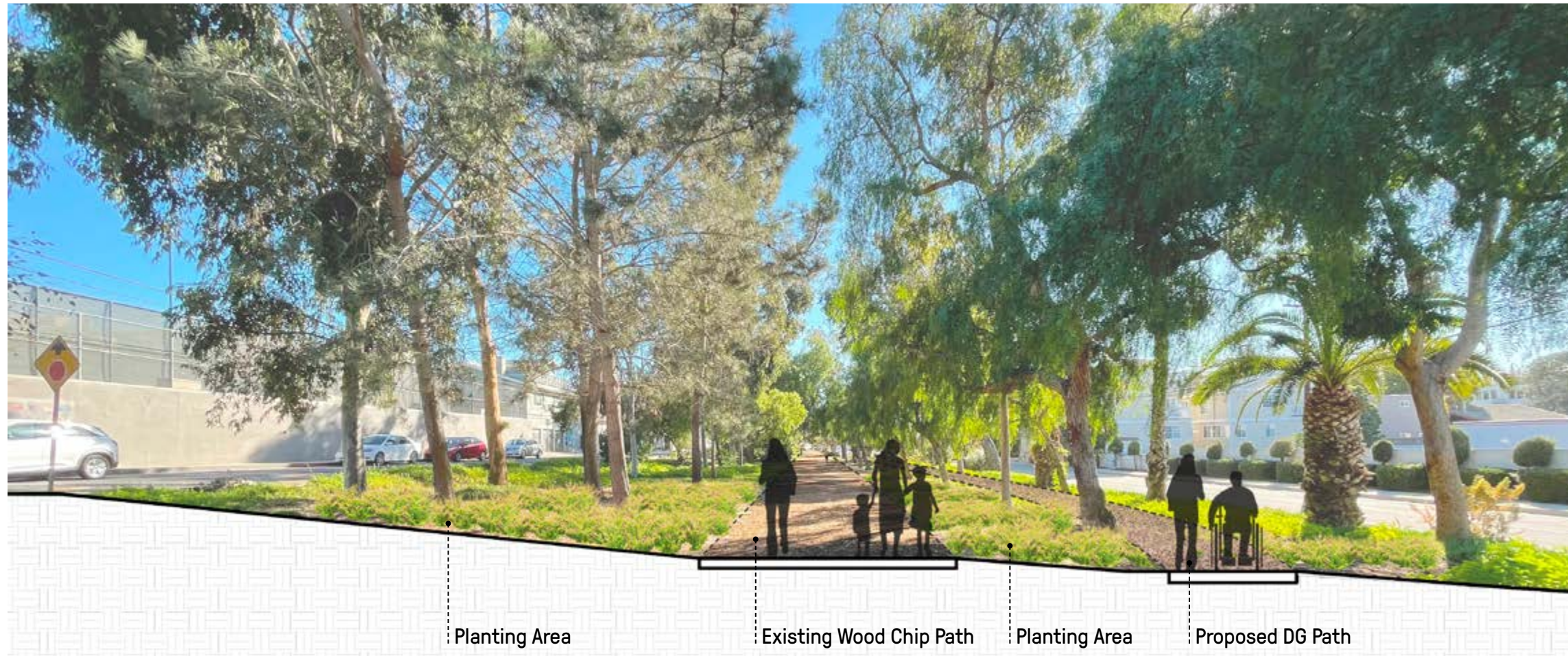


Plan

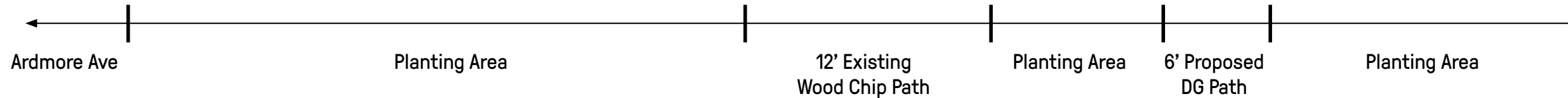
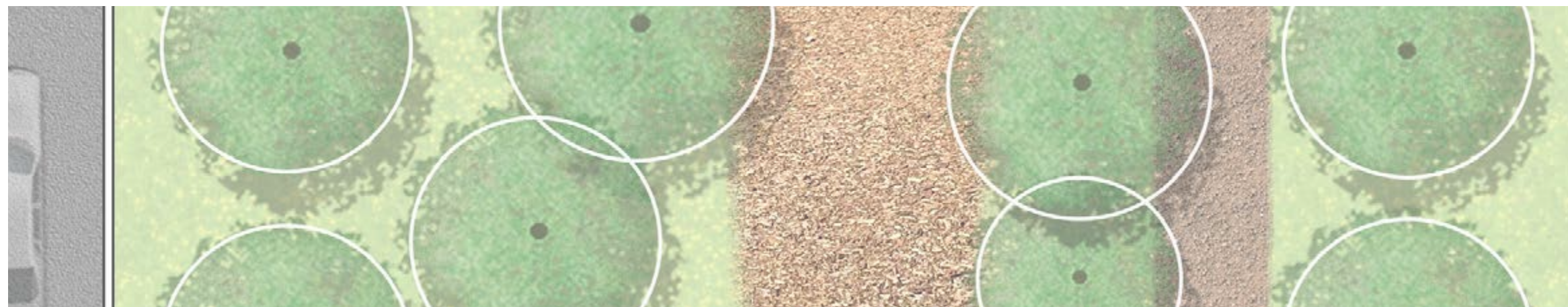


Design Alternative

Option 3: Separate decomposed granite path.



Section



Plan

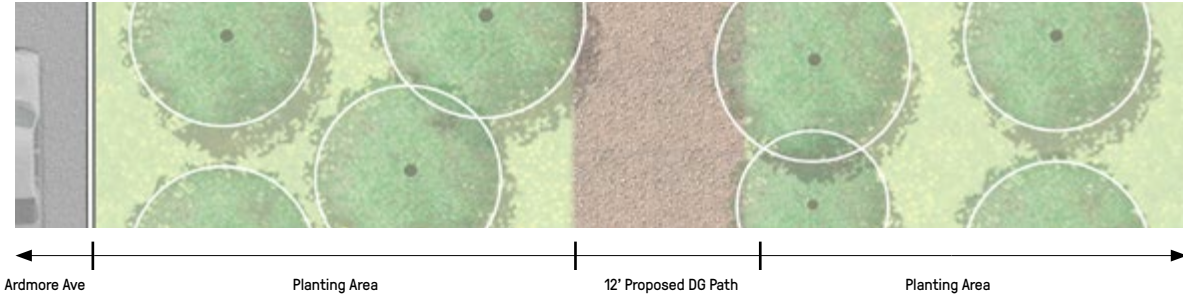


Greenbelt Accessibility Path

Design Alternatives

Pros and Cons

Option 1



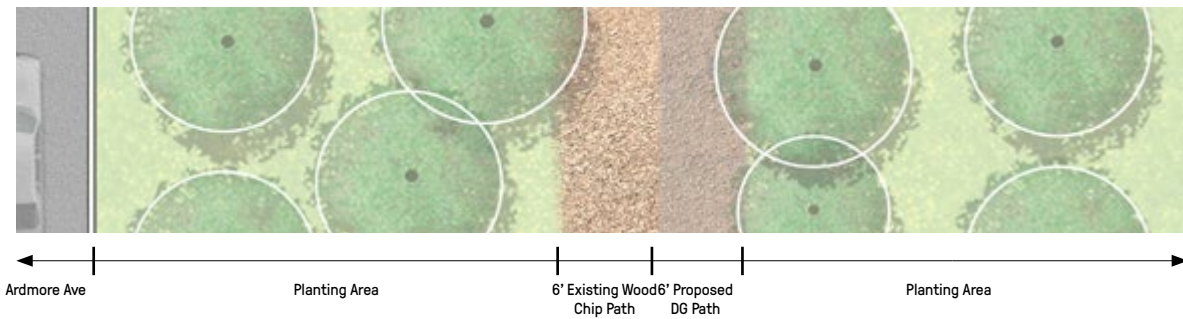
PROS

- Lowest maintenance
- Seamless Access

CONS

- Removes wood chips
- Minor modifications required to existing irrigation and planting

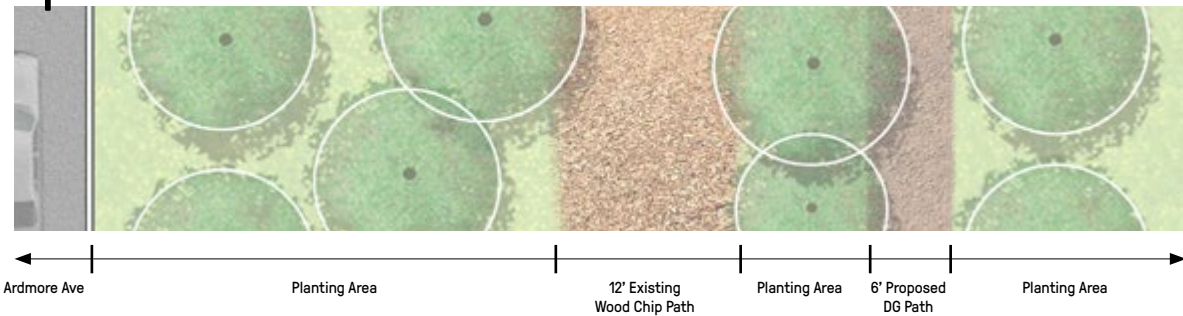
Option 2



- Provides choice of material within existing path cross-section

- Significant maintenance due to mixing of materials
- Would require a fixed header - potential tripping hazard
- Minor modifications required to existing irrigation and planting
- May increase conflicts between passing users

Option 3



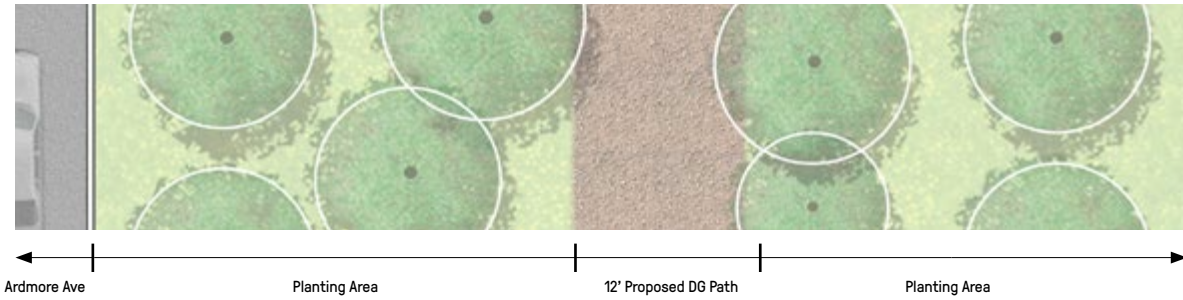
- Dedicated path
- Retains existing woodchip path
- Reduces potential conflicts with existing path

- Highest cost
- Some plant and tree removal
- Equal Access would require additional tertiary paths to points of interest
- May not be feasible for entire greenbelt - requires additional study.

Design Alternatives

ROM Costs

Option 1

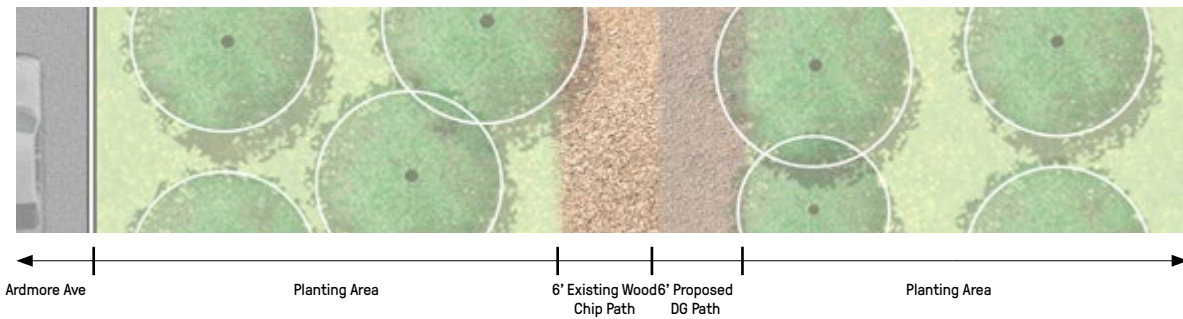


Total Construction Cost: \$205,000

Total Design Cost: \$63,250

Total Project Cost: \$268,250

Option 2

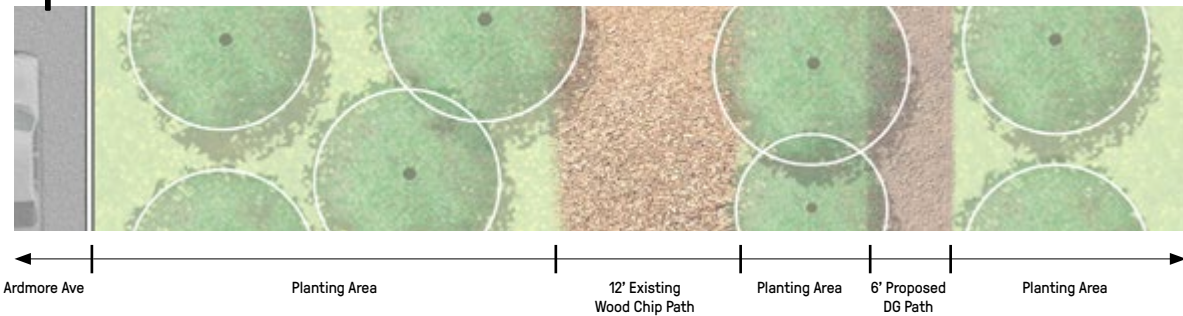


Total Construction Cost: \$195,000

Total Design Cost: \$74,750

Total Project Cost: \$269,750

Option 3



Total Construction Cost: \$315,000

Total Design Cost: \$86,250

Total Project Cost: \$401,250

COUNCIL CONSIDERATIONS

- Decomposed granite is a natural material that is best suited for an accessible pedestrian trail on the Greenbelt and is considered as landscaping and compliant with zoning codes and ordinances.
- Extent of the accessible pedestrian trail from Pier Ave to 11th St.
- Selection of Design Alternatives Options 1, 2, or 3 for the accessible pedestrian trail.



CITY OF HERMOSA BEACH
1315 VALLEY DRIVE

ADA SELF EVALUATION AND
TRANSITION PLAN

03

PROGRAM ACCESSIBILITY

- Services, programs, or activities, **when viewed in their entirety**, must be readily accessible.
- This is known as “Program Accessibility”.
- The ADA Self Evaluation and Transition Plan are living documents that assist the City to achieve Program Accessibility.



ADMINISTRATIVE REQUIREMENTS

- Preparation of an ADA Self-Evaluation.
- Develop a grievance procedure.
- Designate an individual to oversee Title II of American Disability Act compliance (e.g., an ADA coordinator).
- Develop a Transition Plan if structural changes are necessary for achieving program accessibility.



PHASE OF ACCESS COMPLIANCE

Phase	Description
I: Commitment	Designation of an employee as the ADA Coordinator, notice to the public of how Title II applies to the public entity, adoption of an ADA Grievance procedure, and hiring of a Certified Access Specialist (CASp).
II: Self Evaluation	Completion of a Self Evaluation (programs, services and activities) and Transition Plan (physical barriers).
III: Transition	Prepare a budget and correction plan to advance the findings in the Self Evaluation and Transition Plan.
IV: Implementation	This phase achieves the goals established in the self-evaluation and transition plan.
V. Ongoing Support	Maintenance and quality control - includes such steps as a final report on compliance status, periodic evaluations of compliance status, scheduled maintenance of access features, resolution of access issues as they arise, and ensuring new facilities, alterations, and repairs are ADA-compliant.

PHASE OF ACCESS COMPLIANCE

Phase	Status	Steps Taken	Actions Required/Recommended
I: Commitment	Ongoing	Designated ADA Coordinator, grievance procedures in place, and CASp consultant hired.	Provide public notice of applicable ADA requirements and maintain commitment to access compliance.
II: Self Evaluation	Ongoing	ADA inspection reports completed for (1) main public buildings; (2) main parking lots and on-street parking segments; and (3) sidewalks and curb ramps.	Update existing ADA reports; complete self-evaluation of remaining programs, services, and facilities; and review every 3-4 years.
III: Transition	Ongoing	2022 Transition Plan has been prepared.	Incorporate updated ADA reports, self-evaluation of remaining programs, services, and facilities into Plan, and review every 3-4 years.
IV: Implementation	Ongoing	Not yet applicable; City will complete 2022 Transition Plan goals according to recommendations/implementation schedule.	Update the implementation dates in the ADA reports and Transition Plan as budget and priority dictates.
V. Ongoing Support	Ongoing	City has grievance procedure; public works projects meet CBC and ADA regulations; in regular contact with its CASp.	Provide periodic assessment related to the proper maintenance of all access features.

2022 TRANSITION PLAN

- Identifies physical barriers that exist at City facilities.
- Compilation of ADA facility evaluation reports including parking lots.
- Contains updated cost estimates.
- Identifies priorities.

Violations: Parking Structure	Pg. Ref., Item Number	Code Reference	Comments: Recommendations:	Priority (1-4)	Implementation date:
Exterior:					
Site Arrival Points:	Section 1	Cost Estimate: \$5000 - For detectable warning devises only.			
Accessible Route	Pg. 6-7, Item A	CBC 11B-206	East Access - From Hermosa Ave. (Cross Slopes violations). West Access form Beach (Cross Slope / Curb Ramp violations) At least one accessible route shall be provided within the boundary of the site.	2	

ADA EVALUATION REPORTS

1. Parking Structure
2. Clark Building
3. Valley Park Building
4. Kiwanis Shared Building Exterior
Access & Parking
5. Kiwanis
6. Rotary Club



ADA EVALUATION REPORTS

7. Fire Department
8. Police Department
9. City Hall
10. Civic Center Exterior
11. City Yard
12. Base 3
13. South Park



ADA EVALUATION REPORTS

14. Community Center & Theatre
15. City of Hermosa Beach Citywide Disabled Parking
16. Hermosa Beach On-Street Disabled Parking
17. Citywide Building and Facilities Condition Assessment CIP 13-664
ADA Sidewalks and Curb Ramps Evaluation



COST ESTIMATING

Category	Cost
Building Facilities	\$1,150,500
Off-Street Disable Parking	\$850,000
On-Street Disable Parking	\$52,500
City Sidewalk and Ramps	<u>\$43,000,000</u>
Total	\$45,053,000

PRIORITY SETTING

Category	Basis of Priority
Building Facilities	Based on highest needs, safety, programmatic requirements, and funding availability.
Off-Street Disable Parking	Must maintain compliance or provide alternatives that provide equal access.
On-Street Disable Parking	Per recommended guidelines Public Right-of-Way Accessibility Guidelines (PROWAG).
City Sidewalk and Ramps	Based on highest needs, safety, and funding availability, and safe routes to school.

CURRENT FUNDING

1. Hermosa Beach's FY21-22 CIP Budget: \$19,546,905
2. \$662,000 dedicated to address ADA issues:
 - \$130,000 ADA consulting
 - \$284,000 Curb ramp/sidewalk improvements
 - \$128,000 Beach Access Path
 - \$72,000 Clark Building
 - \$48,000 Parking space/lot improvements



RECOMMENDATIONS

1. **Evaluation Report and Code Updates** - As projects are created the design shall include the current codes that are applicable at the time of design.
2. **Self-evaluation** - (1) employment policies and practices, (2) notice to the public of ADA requirements, (3) website accessibility, (4) temporary event permits and (5) Emergency Operations Center and on-scene operations.
3. **Programs, Services and Activities** - Continue to evaluate the City's programs, services and activities to ensure compliance.
4. **Other City Facilities** - Additional ADA assessments are required for City facilities that are not detailed in this 2022 ADA Transition Plan.

RECOMMENDATIONS

- 5. Commitment** - Provide public notice of ADA requirements applicable to City and maintain commitment to access compliance.
- 6. Funding** – FY 2021-2022 budget dedicated funds for ADA consulting services and Capital Improvement Projects. City should continue to dedicate funds as they are available.
- 7. Implementation** - Update the implementation dates in the ADA reports and Transition Plan Schedule as budget and priority dictates.
- 8. On-going Maintenance Assessment** - Periodic assessment related to the proper maintenance of all accessible features is required.

